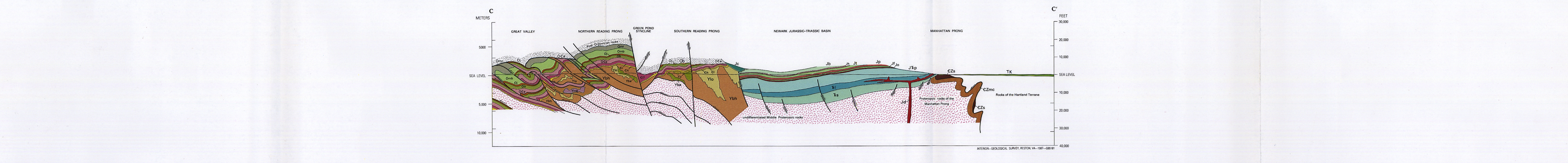
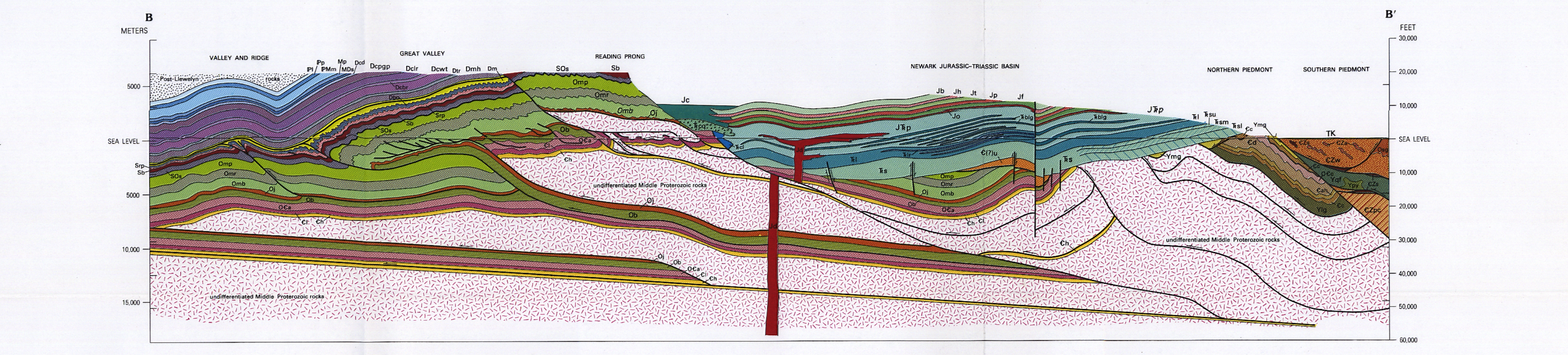
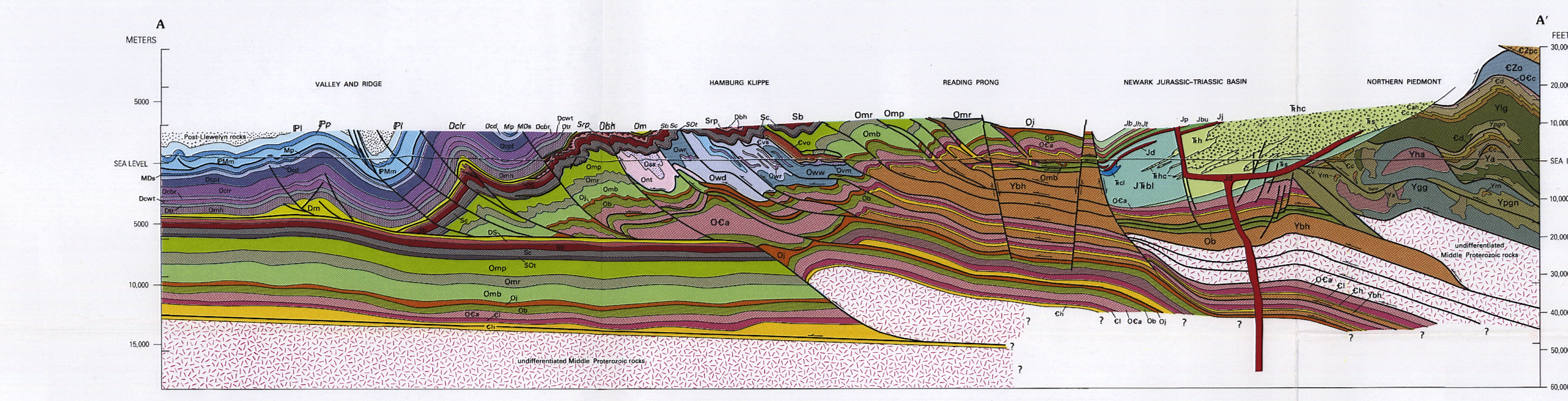
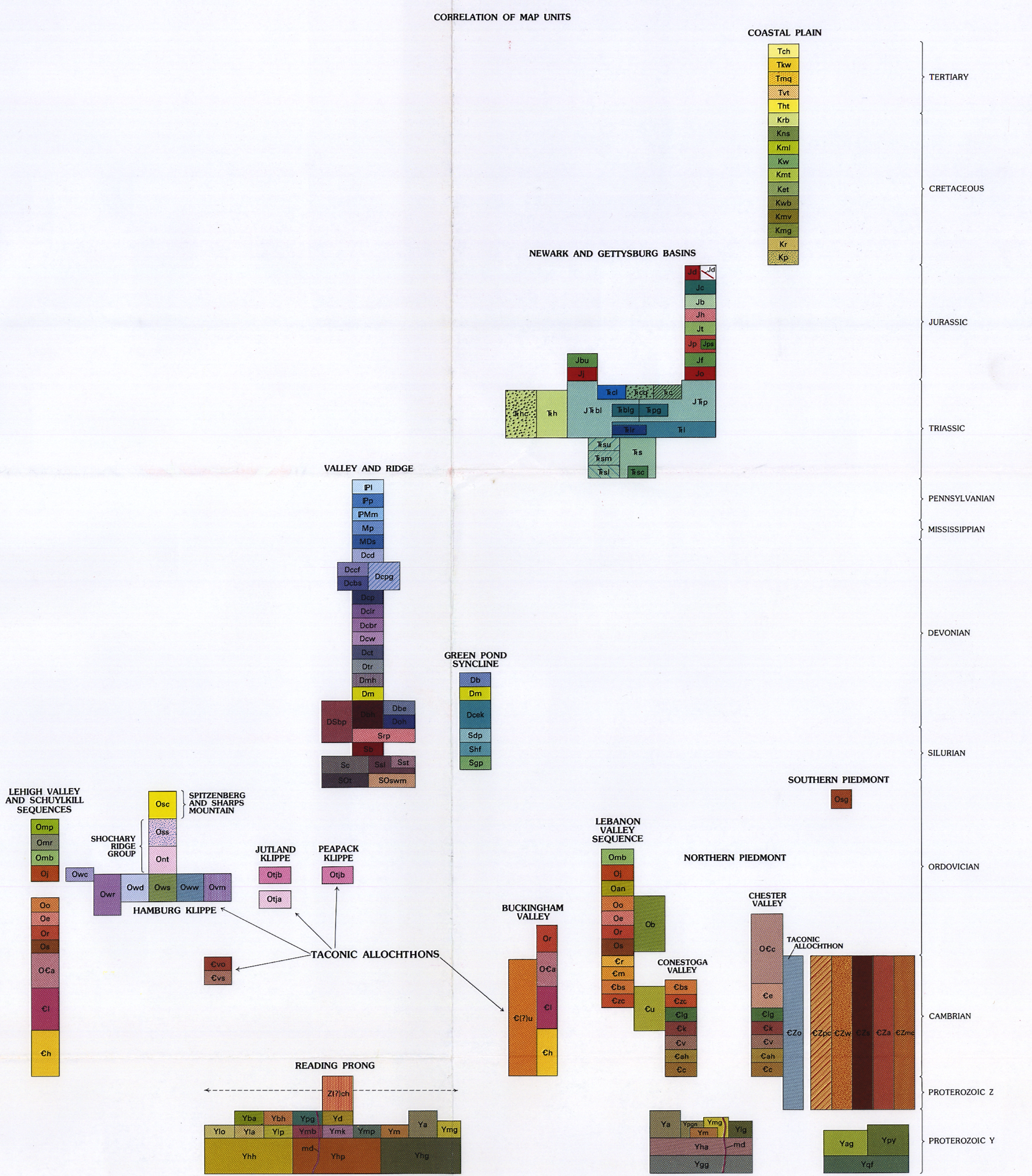


Base from U.S. Geological Survey, 1984
Revised and compiled by Peter T. Lytle and Jack B. Epstein, 1987
10,000-meter Universal Transverse Mercator grid ticks, zone 18, shown in black.
SCALE 1:250,000
CONTOUR INTERVAL 100 FEET
NATIONAL GEODESIC VERTICAL DATUM OF 1929
7.5-minute topographic quadrangle angles printed in red.



GEOLOGIC MAP OF THE NEWARK 1° x 2° QUADRANGLE, NEW JERSEY, PENNSYLVANIA, AND NEW YORK
By
Peter T. Lytle and Jack B. Epstein
1987