

November 16, 2005

ORGANIZATION: NUCLEAR ENERGY INSTITUTE LICENSING ACTION TASK FORCE  
SUB-GROUP

SUBJECT: SUMMARY OF OCTOBER 25, 2005, MEETING WITH NUCLEAR  
ENERGY INSTITUTE LICENSING ACTION TASK FORCE SUB-GROUP  
ON EVALUATION OF TRENDS OF REQUESTS FOR ADDITIONAL  
INFORMATION

On October 25, 2005, a Category 2 public meeting was held between the Nuclear Regulatory Commission (NRC) and representatives of the Nuclear Energy Institute (NEI) Licensing Action Task Force (LATF) at NRC Headquarters, One White Flint North, 11555 Rockville Pike, Rockville, Maryland. The purpose of the meeting was to discuss evaluation of trends of requests for additional information (RAI). A list of attendees is provided as Enclosure 1, a copy of the agenda is provided as Enclosure 2, an NRC handout of RAI data is provided as Enclosure 3, and an NEI provided handout is provided as Enclosure 4.

The participants discussed the status of data trending activities. Results include evaluation of the number of supplements, and number of questions, per licensing actions for those actions that were completed in 2000, 2001, 2002, 2003, and 2004. NEI presented a sample page of the information present in the database.

The participants, also, discussed the upcoming NEI Licensing Forum. The ongoing RAI project will be a topic of discussion during the forum, so the participants prepared for that discussion.

Public feedback forms were distributed. No comments were received from members of the public during the meeting.

Please direct any inquiries to Robert Kuntz at 301-415-3733, or [rfk@nrc.gov](mailto:rfk@nrc.gov).

*/RA/*

Robert Kuntz, Project Engineer  
Plant Licensing Branch III-2  
Division of Operating Reactor Licensing  
Office of Nuclear Reactor Regulation

Project No. 689

Enclosures: 1. List of Attendees  
2. Revised Agenda  
3. NRC Handout  
4. NEI Handout

cc w/atts: See next page

November 16, 2005

ORGANIZATION: NUCLEAR ENERGY INSTITUTE LICENSING ACTION TASK FORCE  
SUB-GROUP

SUBJECT: SUMMARY OF OCTOBER 25, 2005, MEETING WITH NUCLEAR  
ENERGY INSTITUTE LICENSING ACTION TASK FORCE SUB-GROUP  
ON EVALUATION OF TRENDS OF REQUESTS FOR ADDITIONAL  
INFORMATION

On October 25, 2005, a Category 2 public meeting was held between the Nuclear Regulatory Commission (NRC) and representatives of the Nuclear Energy Institute (NEI) Licensing Action Task Force (LATF) at NRC Headquarters, One White Flint North, 11555 Rockville Pike, Rockville, Maryland. The purpose of the meeting was to discuss evaluation of trends of requests for additional information (RAI). A list of attendees is provided as Enclosure 1, a copy of the agenda is provided as Enclosure 2, an NRC handout of RAI data is provided as Enclosure 3, and an NEI provided handout is provided as Enclosure 4.

The participants discussed the status of data trending activities. Results include evaluation of the number of supplements, and number of questions, per licensing actions for those actions that were completed in 2000, 2001, 2002, 2003, and 2004. NEI presented a sample page of the information present in the database.

The participants, also, discussed the upcoming NEI Licensing Forum. The ongoing RAI project will be a topic of discussion during the forum, so the participants prepared for that discussion.

Public feedback forms were distributed. No comments were received from members of the public during the meeting.

Please direct any inquiries to Robert Kuntz at 301-415-3733, or [rfk@nrc.gov](mailto:rfk@nrc.gov).

**/RA/**

Robert Kuntz, Project Engineer  
Plant Licensing Branch III-2  
Division of Operating Reactor Licensing  
Office of Nuclear Reactor Regulation

Project No. 689

- Enclosures: 1. List of Attendees
- 2. Revised Agenda
- 3. NRC Handout
- 4. NEI Handout

cc w/atts: See next page

**DISTRIBUTION:**

PUBLIC	RidsNrrDlpmLpdiii2 (GSuh)	RidsNrrDlpm (CHaney)	DCollins	RKuntz
PDIII-2 R/F	RidsOgcRp	RJenkins	TMensah	EHackett
HBerkow	RidsAcrsAcnwMail	RidsNrrLAPCoates	WReckley	CHolden
RidsRgn3MailCenter		DWeaver	LLois	

Package ADAMS Accession No. ML053180489;  
Meeting Notice ADAMS Access. No. ML052870451  
ADAMS Accession Number: ML053180482 (Meeting summary)

OFFICE	PE:LPLIII-2	LA:LPLIII-2	C:LPLIII-2
NAME	RKuntz	PCoates	LRaghavan for GSuh
DATE	11/16/05	11/15/05	11/16/05

**LIST OF ATTENDEES**  
**REQUESTS FOR ADDITIONAL INFORMATION (RAI) TREND EVALUATION**  
**NRC/INDUSTRY LICENSING ACTION TASK FORCE SUB-GROUP MEETING**  
**OCTOBER 25, 2005**

**NEI/Licensing Action Task Force**

M. Schoppman  
D. Woodlan  
D. Gullott  
C. Brinkman  
C. Earls  
D. McKinney

**NRC**

H. Nieh  
T. Boyce  
W. Reckley  
R. Kuntz

**Public**

D. Raleigh, LIS, Sciencetech

AGENDA  
REQUESTS FOR ADDITIONAL INFORMATION (RAI) TREND EVALUATION  
NRC/INDUSTRY LICENSING ACTION TASK FORCE SUB-GROUP MEETING  
JULY 26, 2005

- |                |   |
|----------------|---|
| 1:00 - 1:15 pm | Introductions and Background  |
| 1:15 - 3:30 pm | RAI Trend Evaluation <ul style="list-style-type: none"><li>- Data Trends</li><li>- Pilot Case Studies</li><li>- RAI Data Collection Effort</li><li>- Schedule and Resources</li></ul> |
| 3:30 - 4:00 pm | Questions and Discussions   |

## Using Number of Supplements to Define RAI Trends

<b>Total SEs and Supplements in a year*</b>					
	<b>2000</b>	<b>2001</b>	<b>2002</b>	<b>2003</b>	<b>2004</b>
Supplements	465	460	409	437	256
SEs	507	444	494	409	336

<b>Supplements based on SE year**</b>					
	SE Year				
	<b>2000</b>	<b>2001</b>	<b>2002</b>	<b>2003</b>	<b>2004</b>
Supplements	454	421	430	415	426
SEs	508	444	494	409	336
Supps/SE	0.90	0.95	0.87	1.01	1.27

Notes: Data is for SEs issued from January 1, 2000 to December 31, 2004.

\* This table shows the total number of SEs and the total number of supplements issued in a given calendar year.

\*\* This table shows the total number of supplements for all of the SEs issued in that year regardless of the date of the supplement. For example if an SE was issued in 2002 with one supplement issued in 2000, and one supplement issued in 2001 it would count in the table as 1 SE and 2 supplements in the 2002 totals.

The total number of supplements is different in the two tables because the second table includes supplements associated with an SE issued during that year and thus includes supplements issued prior to year noted.

## Using Number of Questions to Define RAI Trends

<b>Total SEs and Questions in a year*</b>					
	<b>2000</b>	<b>2001</b>	<b>2002</b>	<b>2003</b>	<b>2004</b>
Questions	2120	2888	3256	2273	1031
SEs	477	436	481	400	327

<b>Questions based on SE year**</b>					
	SE Year				
	<b>2000</b>	<b>2001</b>	<b>2002</b>	<b>2003</b>	<b>2004</b>
Questions	1329	2379	3508	2539	2064
SEs	477	436	481	400	327
Questions/SE	2.8	5.5	8.8	6.5	6.3
Supplements	356	387	395	401	415
Q's/Supp	3.7	6.1	8.9	6.3	5.0

<b>Number of supplements that could not be located***</b>					
	SE Year				
	<b>2000</b>	<b>2001</b>	<b>2002</b>	<b>2003</b>	<b>2004</b>
Supplements	98	34	35	14	11

Notes: Data is for SEs issued from January 1, 2000 to December 31, 2004

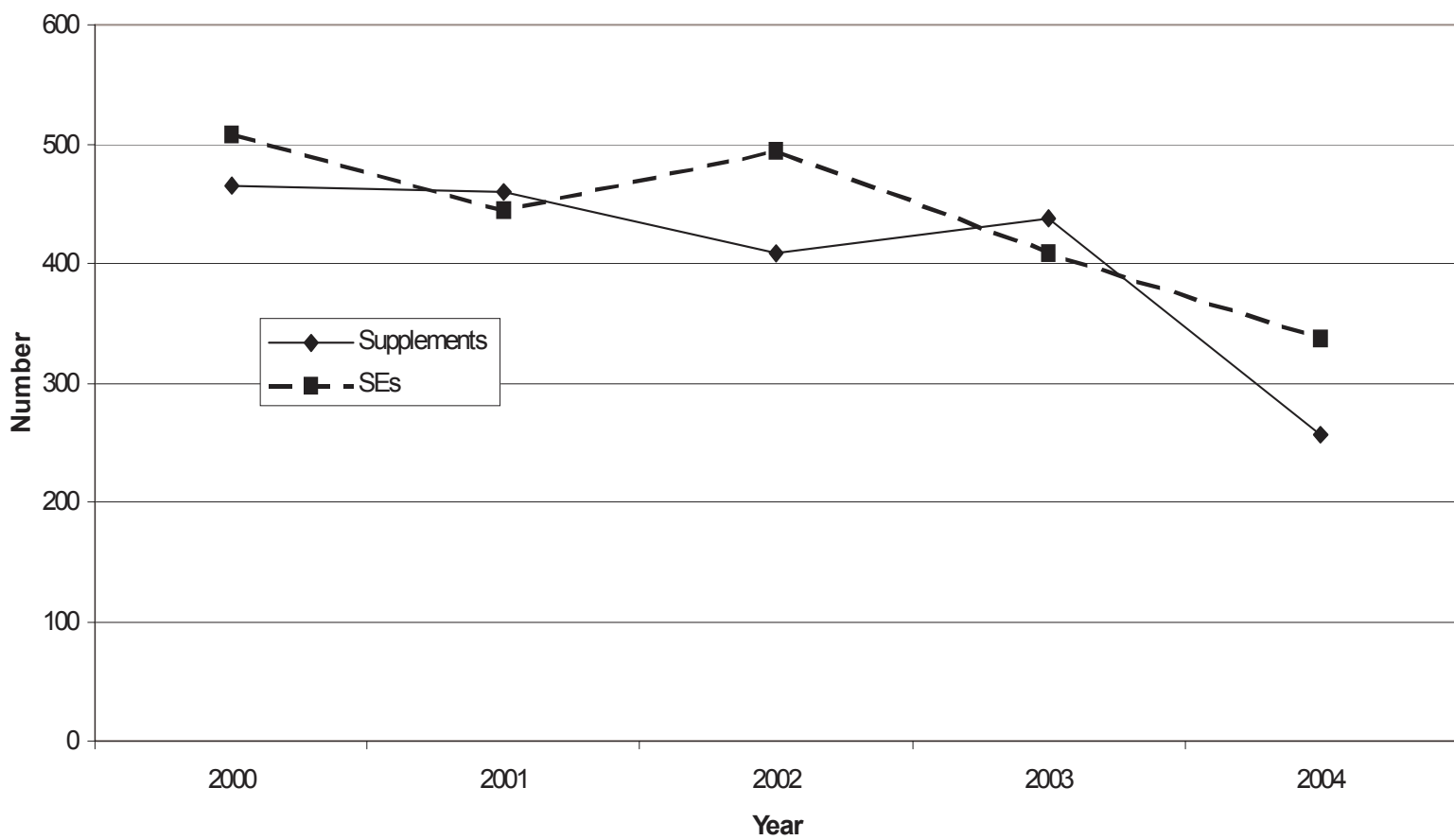
The number of questions was compiled by searching ADAMS for the supplements and manually counting the number of questions. For questions with sup-parts each sub-part was counted as a question. Supplements submitted in response to conversation with NRC without any questions were counted as containing one (1) question.

\* This chart shows the total number of SEs issued in a year and the total number of questions asked in that year with no correlation to the submittal or the SE. Therefore, for 2004 (and to a lesser extent 2003) the number of questions is lower because SEs that have been issued in 2005 are not in the data base but would have had RAIs in those years.

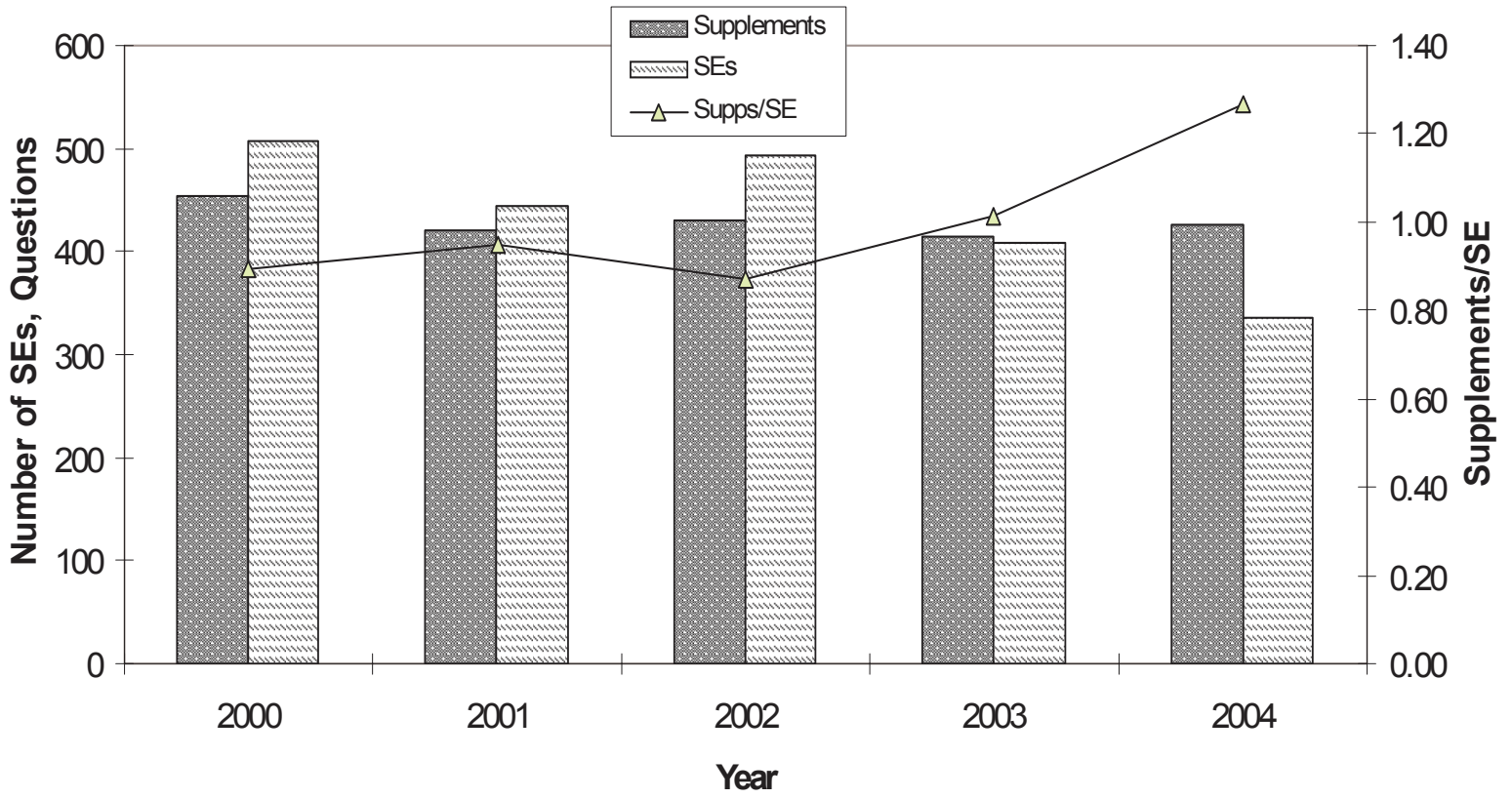
\*\* The number of questions may be low for 2000 because of the number of supplements (98) that could not be located. Licensing actions were removed from the database completely when most of the supplements were not located for that action.

\*\*\* If a supplement could not be located it was removed from the database. Licensing actions were removed from the database completely when most of the supplements were not located for that action.

Number of Supplements and SEs

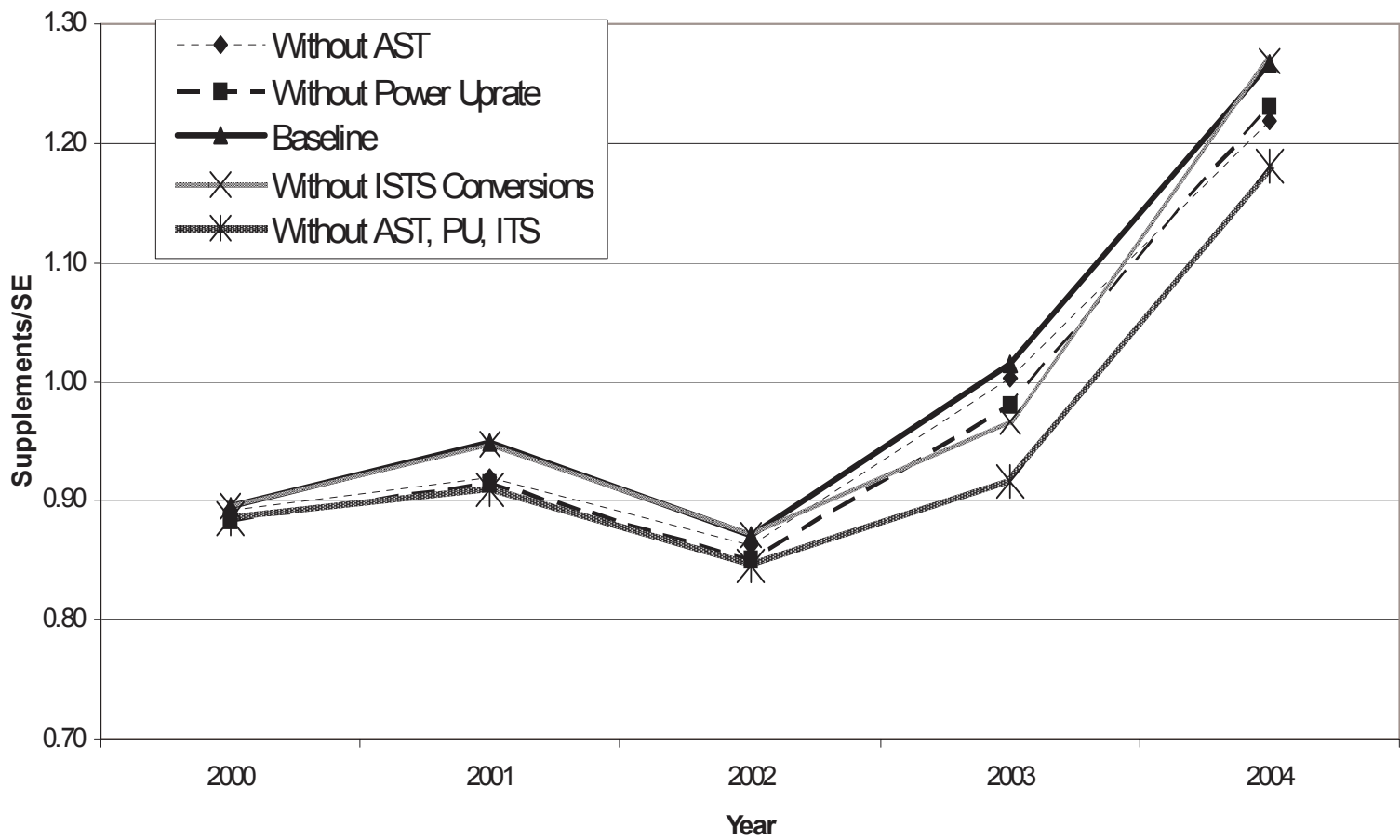


# RAI Data Trend Using Supplements

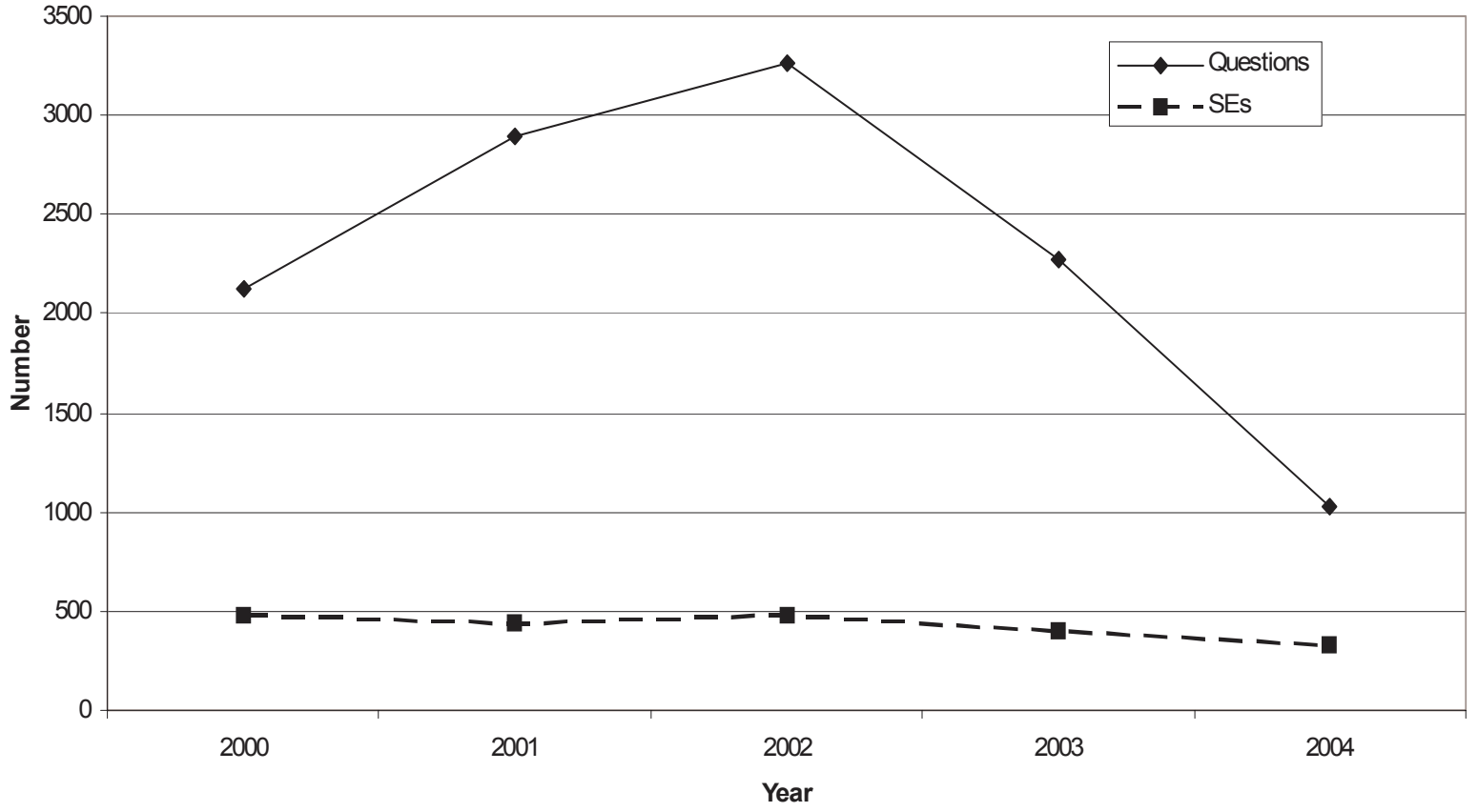




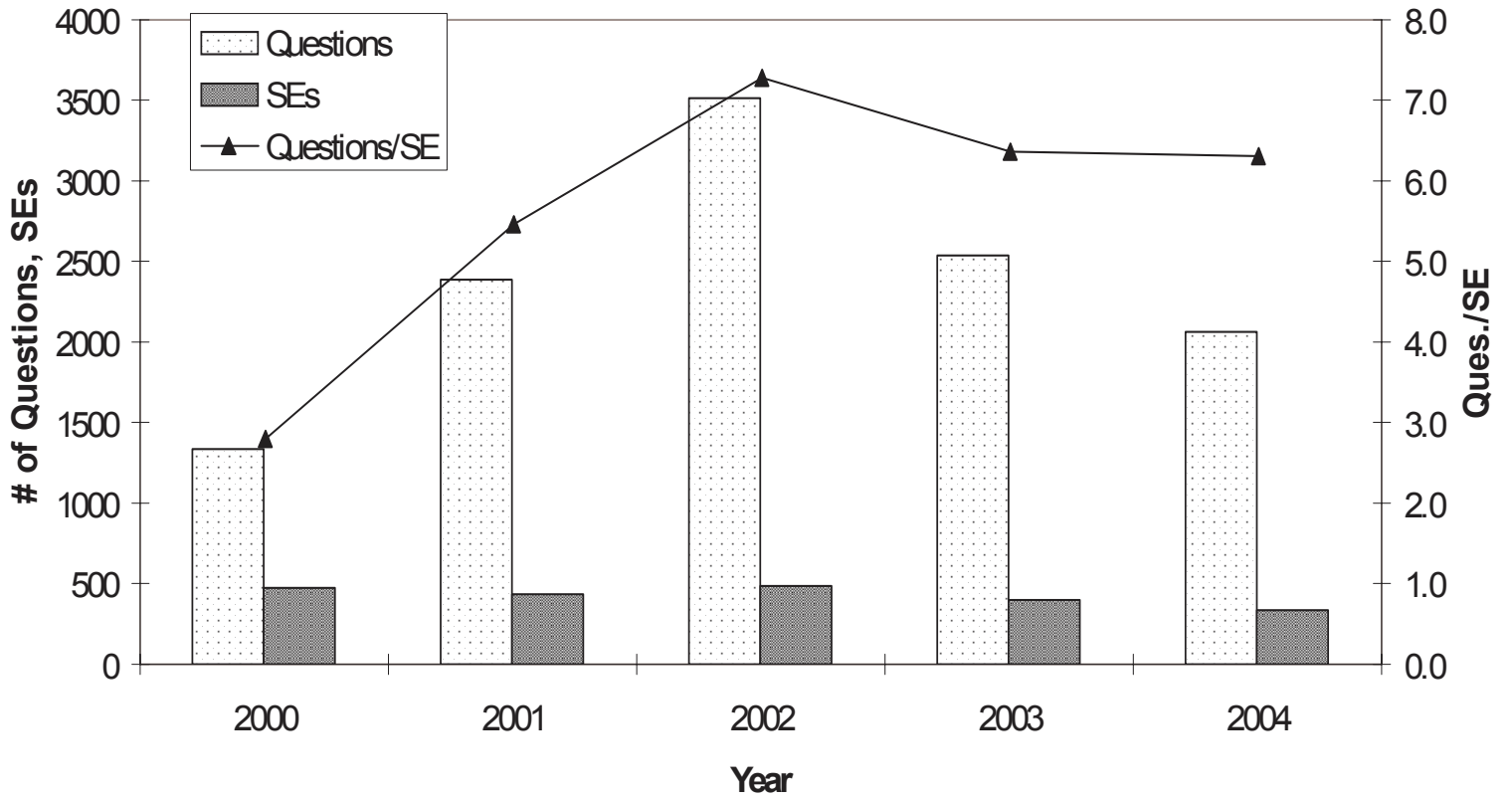
RAI Trend Sensitivities Using Supplements



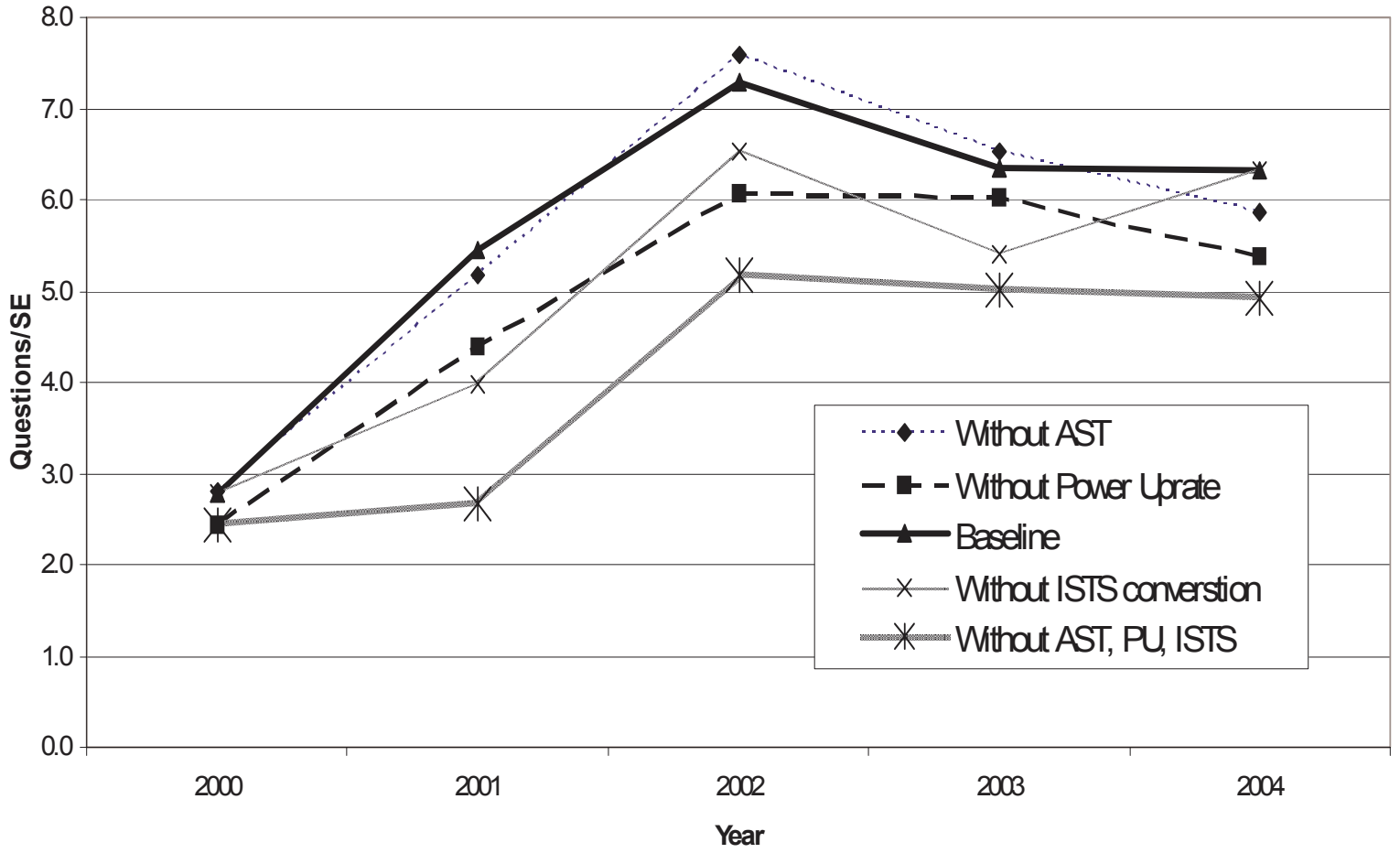
Number of Questions and SEs



### RAI Trend Using Number of Questions



RAI Trends Sensivities Using Number of Questions



Mr. Marvin Fertel  
Senior Vice President  
and Chief Nuclear Officer  
Nuclear Energy Institute  
1776 I Street, NW, Suite 400  
Washington, DC 20006-3708

Mr. Charles B. Brinkman, Director  
Washington Operations  
Westinghouse  
12300 Twinbrook Parkway, Suite 330  
Rockville, MD 20852

Mr. Michael Coyle  
Vice President, Nuclear Operations  
Nuclear Energy Institute  
1776 I Street, Suite 400  
Washington, DC 20006-3708

Mr. Stephen Floyd  
Vice President, Regulatory Affairs  
Nuclear Energy Institute  
1776 I Street, Suite 400  
Washington, DC 20006-3708

Mr. Alex Marion, Senior Director  
Engineering  
Nuclear Energy Institute  
1776 I Street, Suite 400  
Washington, DC 20006-3708

Mr. Anthony Pietrangelo, Senior Director  
Risk Regulation  
Nuclear Energy Institute  
1776 I Street, NW, Suite 400  
Washington, DC 20006-3708

Mr. James Gresham, Manager  
Regulatory and Licensing Engineering  
Westinghouse Electric Company  
P.O. Box 355  
Pittsburgh, PA 15230-0355

Mr. Jim Davis, Director  
Operations  
Nuclear Energy Institute  
1776 I Street, NW, Suite 400  
Washington, DC 20006-3708