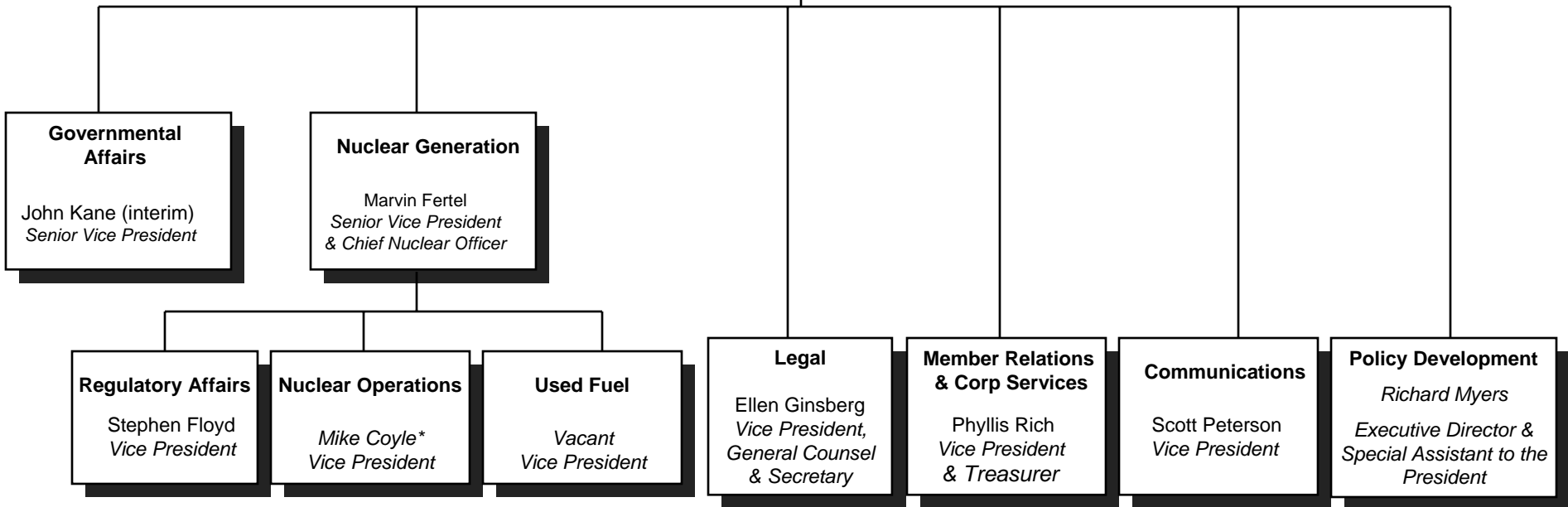


Nuclear Energy Institute

October 1, 2005

President and Chief Executive Officer
Frank "Skip" Bowman

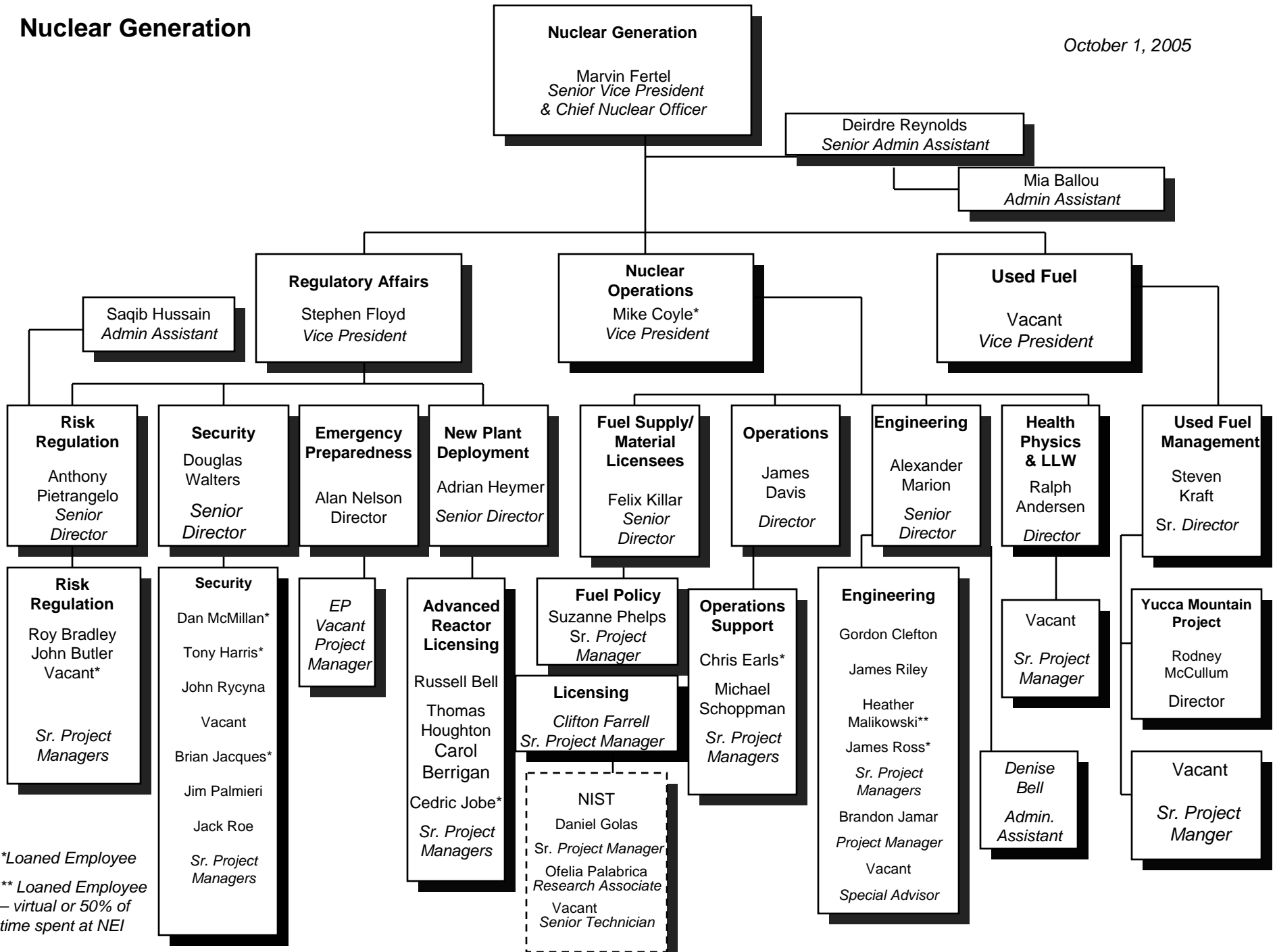
Angie Howard
Vice President, Office of the President and Executive Advisor to the President



*Loaned Employee

Nuclear Generation

October 1, 2005



*Loaned Employee

** Loaned Employee
– virtual or 50% of
time spent at NEI