

RI

From: Todd Jackson
To: Kellar, Ray L.; Patel, Amar; Williams, Martha
Date: Mon, Jul 19, 2004 11:36 AM
Subject: Fwd: "Rough" Photos of the VY fuel pins...

VY Team,

Some additional info.

Todd

C-175

From: "Pelton, David" <dpelt90@entergy.com>
To: <cja@nrc.gov>, <bek@nrc.gov>, <jtw1@nrc.gov>, <dps@nrc.gov>, <nas@nrc.gov>, <arb@nrc.gov>, <beh@nrc.gov>, <tjj@nrc.gov>, <wdl@nrc.gov>, <rvic@nrc.gov>
Date: Fri, Jul 16, 2004 2:45 PM
Subject: "Rough" Photos of the VY fuel pins...

All,

I've attached a couple of digital photos showing the inside of the VY fuel pin storage container and the fuel pin segments. The two segments lean across the inside of the container. The third vertical rod is the one used to measure the fuel pins. These are not the best photos but I thought they made for interesting viewing none the less...

David L. Pelton
NRC SRI VY
(802) 257-4319

<<fuelsegmenttape 006.jpg>> <<segmentscloseup.jpg>>

All,

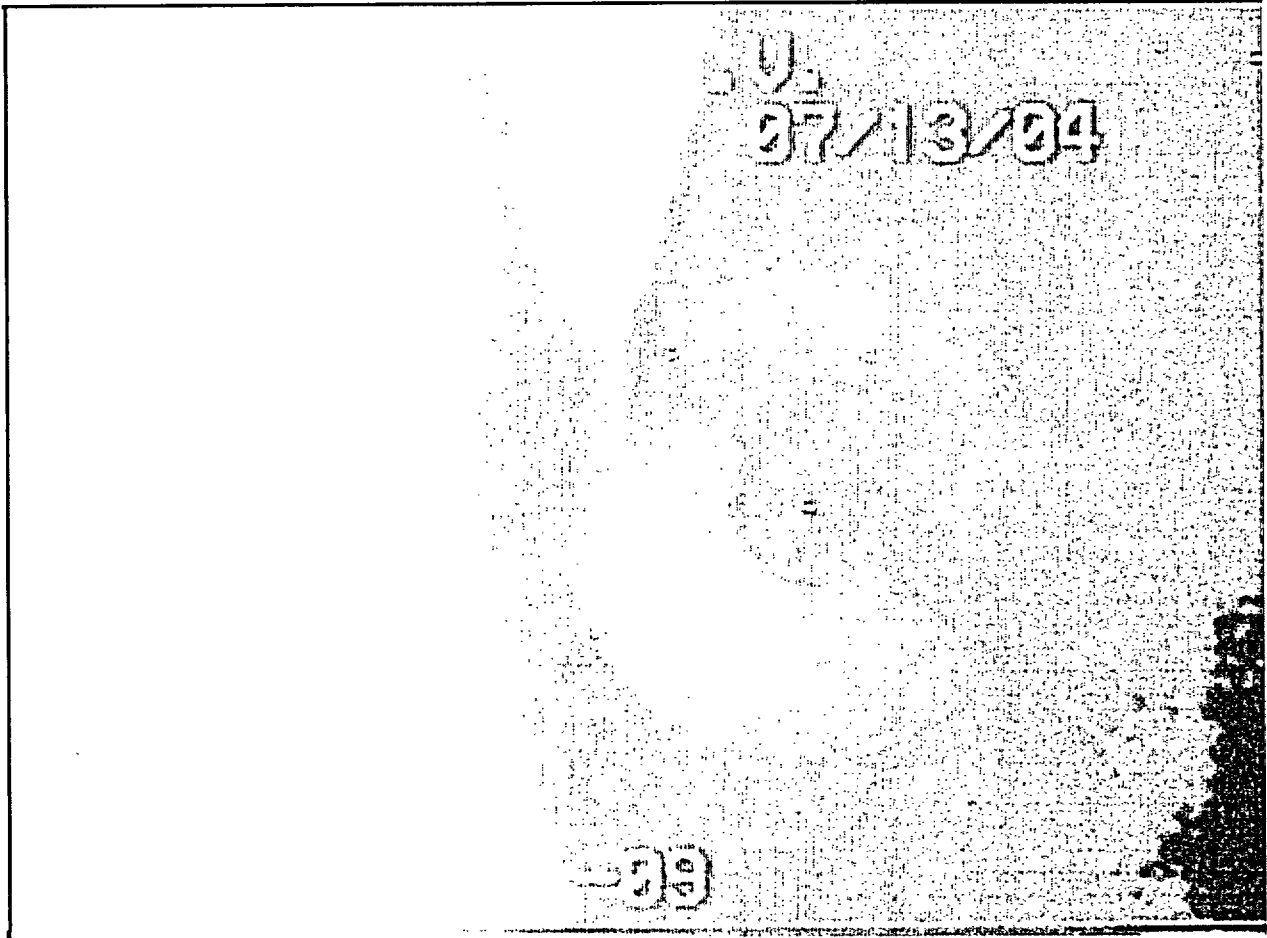
I've attached a couple of digital photos showing the inside of the VY fuel pin storage container and the fuel pin segments. The two segments lean across the inside of the container. The third vertical rod is the one used to measure the fuel pins. These are not the best photos but I thought they made for interesting viewing none the less...

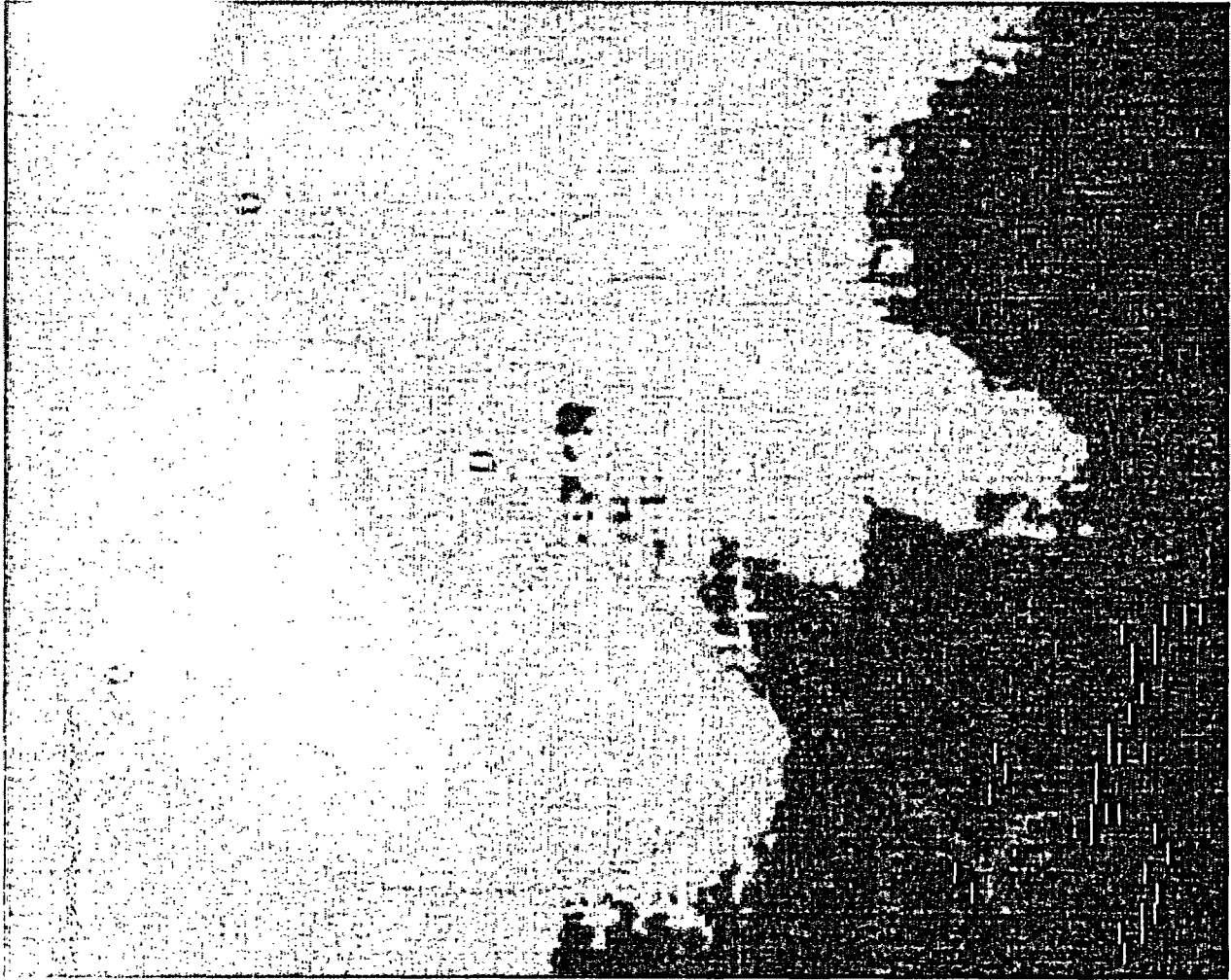
David L. Pelton

NRC SRI VY

(802) 257-4319

<<fuelsegmenttape 006.jpg>> <<segmentscloseup.jpg>>





Mail Envelope Properties (40FBEA76.560 : 11 : 35332)

Subject: Fwd: "Rough" Photos of the VY fuel pins...
Creation Date: Mon, Jul 19, 2004 11:36 AM
From: Todd Jackson

Created By: TJJ@nrc.gov

Recipients

nrc.gov
ARL_PO.ARL_DO
RLK2 (Ray L. Kellar)

nrc.gov
kp1_po.KP_DO
ACP (Amar Patel)

nrc.gov
twf2_po.TWFN_DO
MSW2 (Martha Williams)

Post Office
ARL_PO.ARL_DO
kp1_po.KP_DO
twf2_po.TWFN_DO

Route
nrc.gov
nrc.gov
nrc.gov

Files	Size	Date & Time
MESSAGE Mail	660	Monday, July 19, 2004 11:36 AM

Options

Expiration Date: None
Priority: Standard
Reply Requested: No
Return Notification: None

Concealed Subject: No
Security: Standard