

**MALLINCKRODT  
NUCLEAR  
CORPORATION**

SAINT LOUIS 7, MISSOURI • U.S.A. • CENTRAL 1-8980

DOCKET NO. 70-36

5pgs

EX-111

Plant  
Hematite, Missouri

August 16, 1960

Mr. J. C. Delaney  
Licensing Branch  
Division of Licensing and Regulation  
U. S. Atomic Energy Commission  
Washington 25, D. C.

**SUBJECT:** Extension of SIM-33 to include a Bird Cage for  
Eight Inch Diameter UF<sub>6</sub> Cylinder

**REFERENCE:** Our Letter of July 8, 1960, Subject as Above

Gentlemen:

Enclosed are sketches SK 7, 7-1, and 9 which should complete the information you require in order to approve the subject request for extension of SIM-33.

The eight inch UF<sub>6</sub> cylinder will be mounted in the bird cage with the valve end down. The valve cover will be enclosed in the bottom support as shown on SK 7-1. Lateral movement of the cylinder on the bottom support will be prevented by the 1/4" bar added to the bottom support as shown on SK 7-1.

Lateral movement of the cylinder at the top will be prevented by the angle iron bracket shown on SK 7. This bracket consists of two parts. Each part is hinged to the existing framework so that it may be swung out of the way when the larger MD cylinder is shipped.

Finally the cylinder is held down in the same manner depicted in the detail titled "Cylinder Securing Device" shown on MW 3226-3. The only modification necessary is the addition of two 12 1/2 inch long bolts as shown on SK 7-1 with their location shown on SK 7. The existing 6 1/2 inch long bolts will remain for anchoring the MD cylinders.

B-67



THE WORLD'S FIRST AND LEADING PRODUCER OF NUCLEAR FUELS

DOCKET NO. 70-364

EXTRA

Mr. J. C. Delaney  
August 15, 1960  
Page Two--

To facilitate loading and unloading the eight inch cylinder, the top angle on the front side of the bird cage will be removed. This angle will then be used as additional bracing as shown on SK 9.

Please do not hesitate to call collect should you require additional information prior to approving the requested extension of SNM-33.

Respectfully yours,

MALLINCKRODT NUCLEAR CORPORATION



L. J. Swallow  
Hematite Plant

LJS/jrt

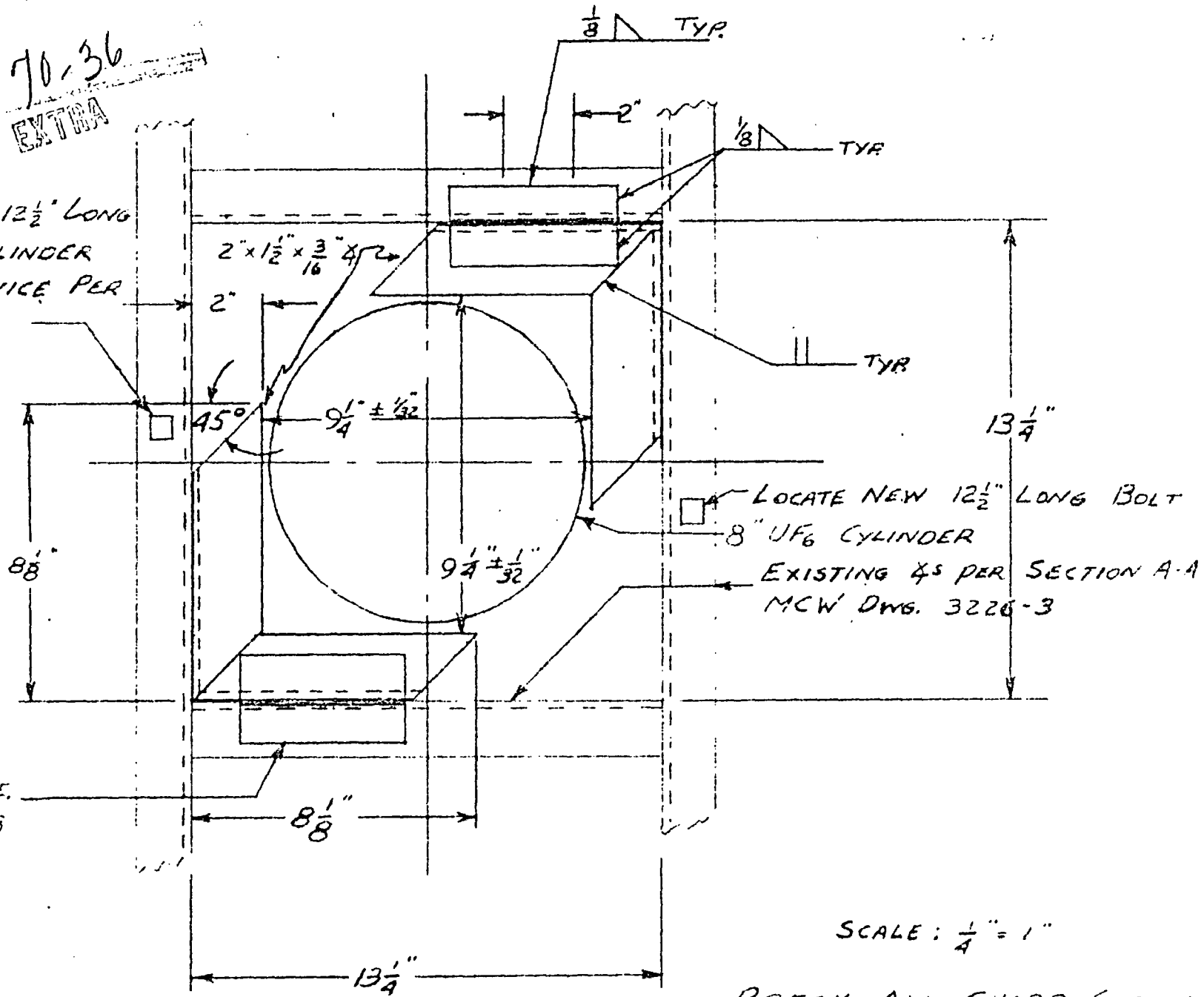
Enc. (3)

cc: AEC (7)

BY LJS DATE 8/10/60 SUBJECT BRACKET TO ADAPT SHEET NO. OF  
 CHKD. BY DATE MP CYLINDER BIRD AGE 5K7 JOB NO. 5K7  
TO 8" CYLINDER

70-36  
 EXTRA

MOUNT NEW 12½" LONG  
 BOLT FOR CYLINDER  
 SECURING DEVICE PER  
 DWG 3226-3



3½" x 3½" HINGE.  
 SL160 # 1808  
 OR EQUAL

LOCATE NEW 12½" LONG BOLT  
 8" UF6 CYLINDER  
 EXISTING AS PER SECTION A-A  
 MCW DWG. 3226-3

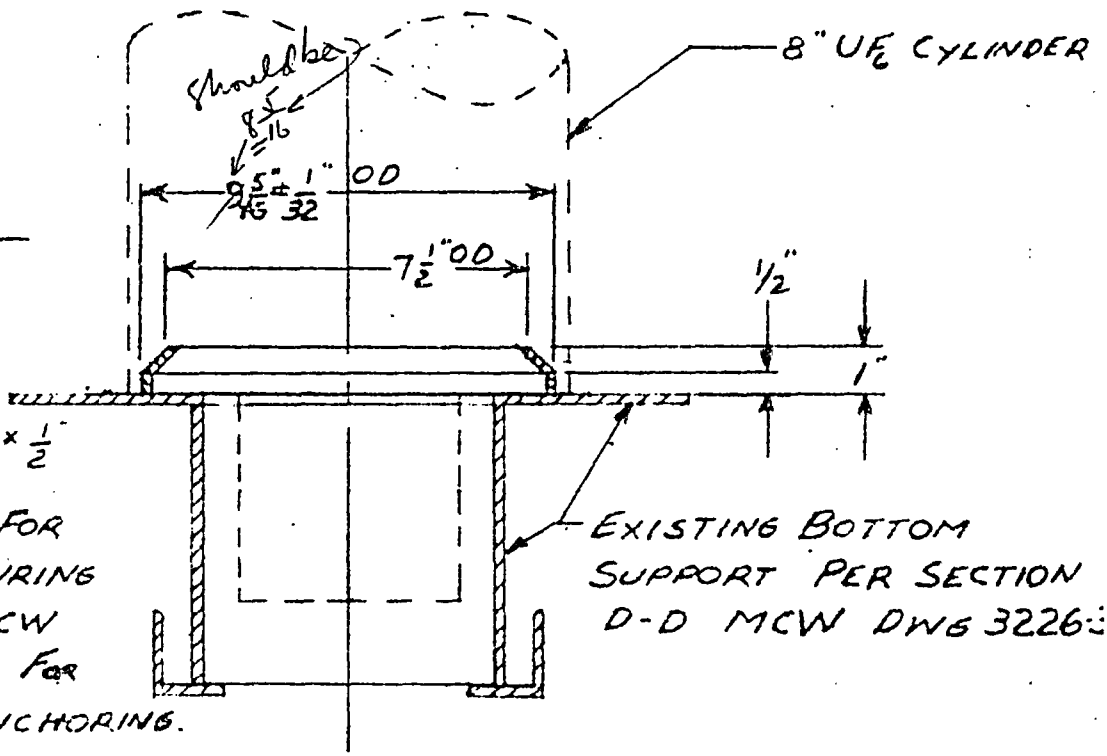
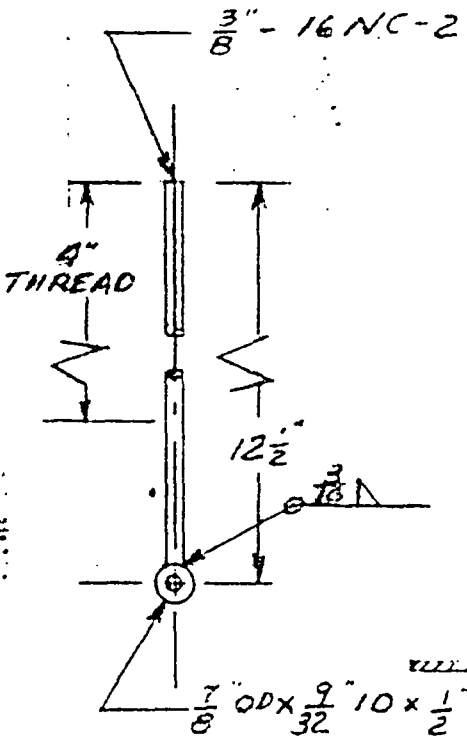
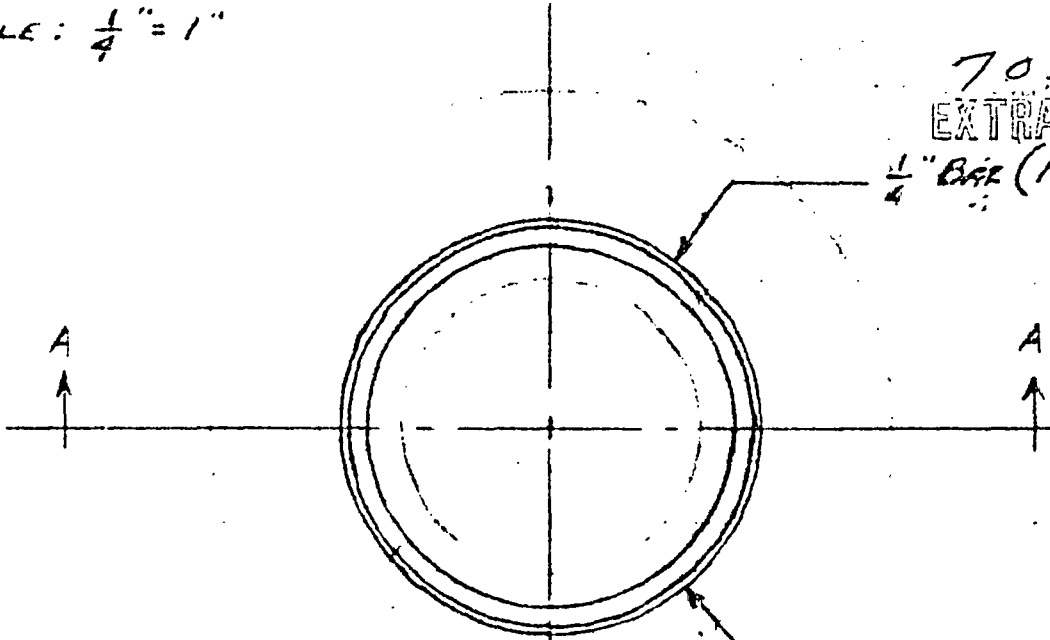
SCALE: ¼" = 1"

BREAK ALL SHARP CORNERS  
 GRIND ROUGH EDGES.

SCALE:  $\frac{1}{4}'' = 1''$

70-36  
EXTRA

$\frac{1}{4}''$  BRG (NEW)

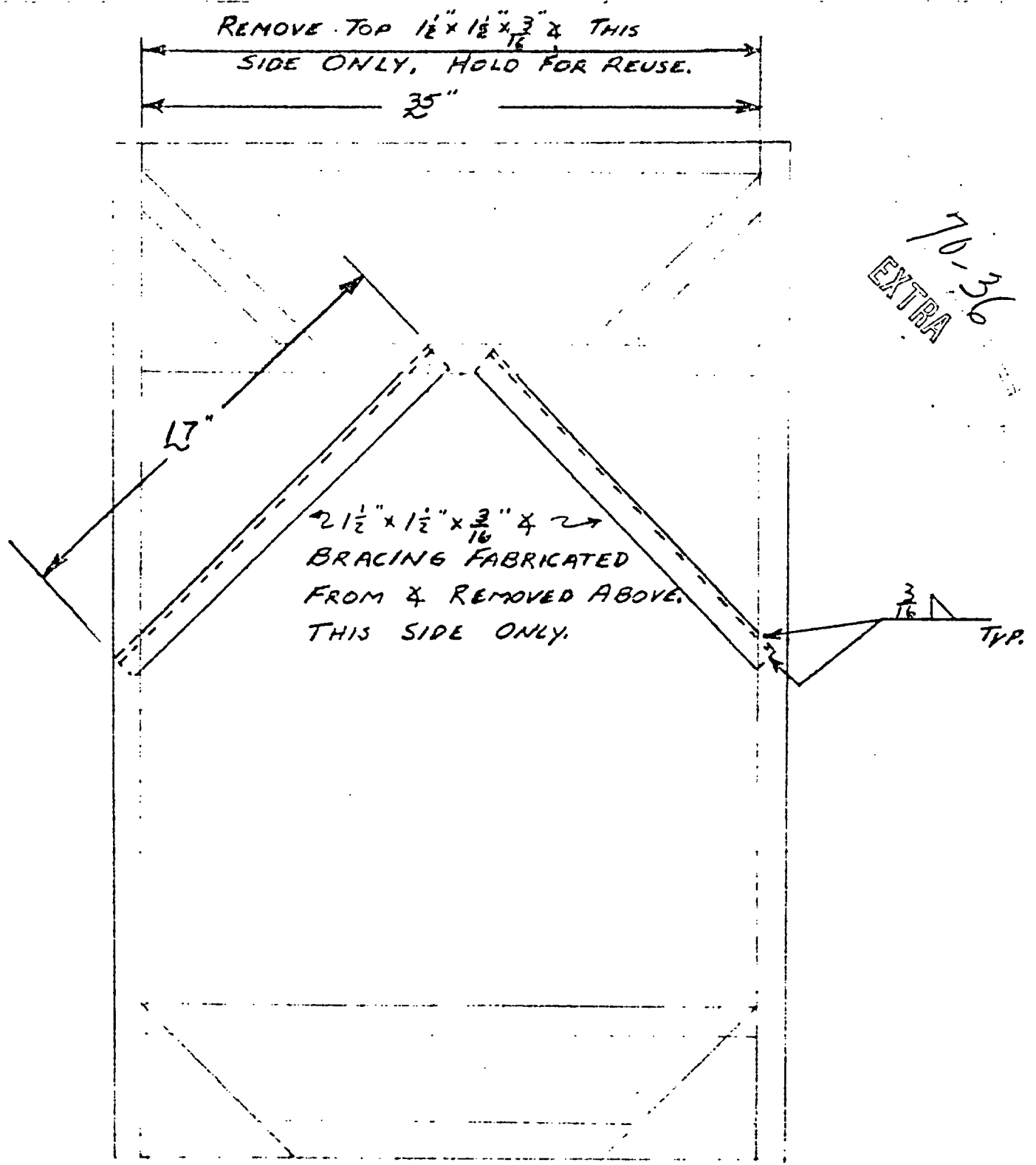


NO. 175 VISA  
DESIGNER'S PRINT  
BANK PASSE  
1948

REVISED BOLT FOR  
CYLINDER SECURING  
DEVICE. SEE MCW  
DWG 3226-3 FOR  
METHOD OF ANCHORING.

EXISTING BOTTOM  
SUPPORT PER SECTION  
D-D MCW DWG 3226-3

SECTION A-A



PARTIAL FRONT VIEW PER MCW  
DRAWING 3226-3