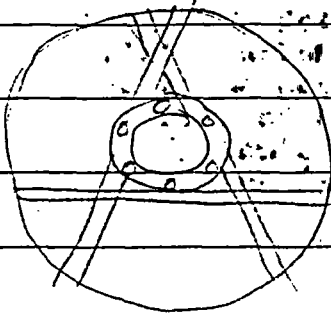


Mullinckrodt 7/2/60
 Proj. 5-8
 Doc 70-36

3/2 Ref Dwg 6448 and 6574 (3/2 request in green)

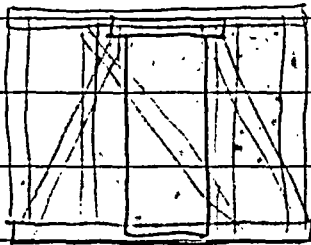
6448 (see SG)

6574 (see S.G.)

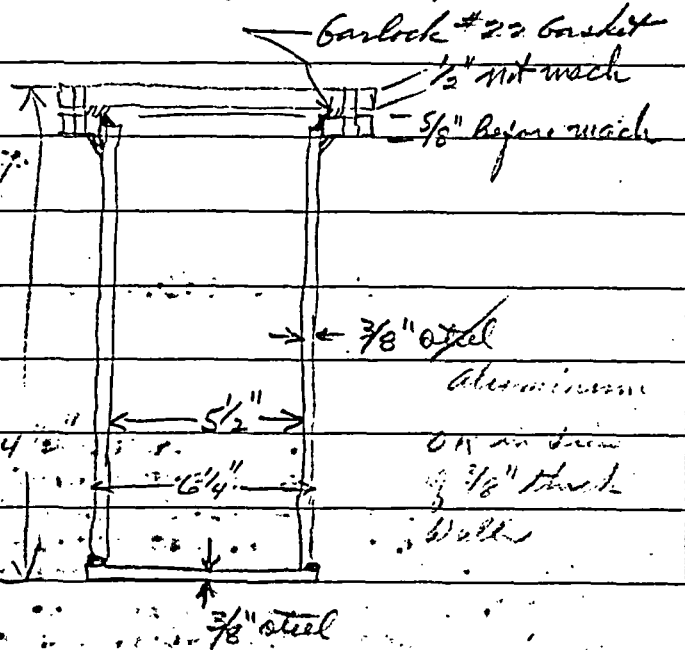


30"
 17"

Group of
 Al shell
 galv. and
 155 Al shell



17"

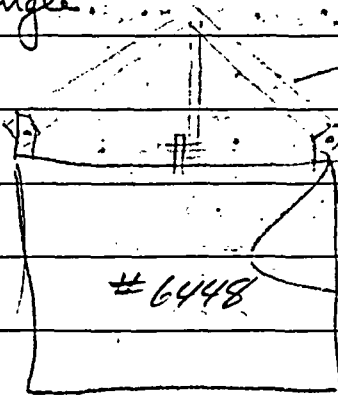


Barlock #22 basket
 1/2" not mach
 5/8" before mach

3/8" oval
 aluminum
 OR in diam
 3/8" thick
 Wall

5 1/2"
 6 1/4"
 3/8" steel

Birdcage main members
 are 1 1/2" x 1 1/2" x 1/4" or
 1 1/2" x 1 1/2" x 3/16" alium
 angle.



#6448

3/16" x 1/2" flat
 to prevent
 stacking when
 required
 large permit
 stacking when
 allowed

Material in env. environment and
 may shift by LTL, LCC, by pieces,
 can be tight, can be loose

Parts material in 5" x 5" corner
 PE bottles.

Metal 11 lb. ...

Pieces - iron Fig 12, PF-17, R-1380
 eg. 8" dia, 15.5/2.3 = 6.73 kg x safe
 Note - full env. metal only. (Q)

May 12 count, single ...
 P = 1.59 kg / ft ...

May in shift 11 x 12 - 132 kg.
 COMPOUND INSULATION
 5" dia dia to can stack.

May of 12 count in shipment
 stacking permitted!

Compound 1 + 2 only - (P > 2.2)
 Side hole corrected by density
 (TID-7019, Sec 2.2, 4/1/60)
 NO stacking (see above)

B-50