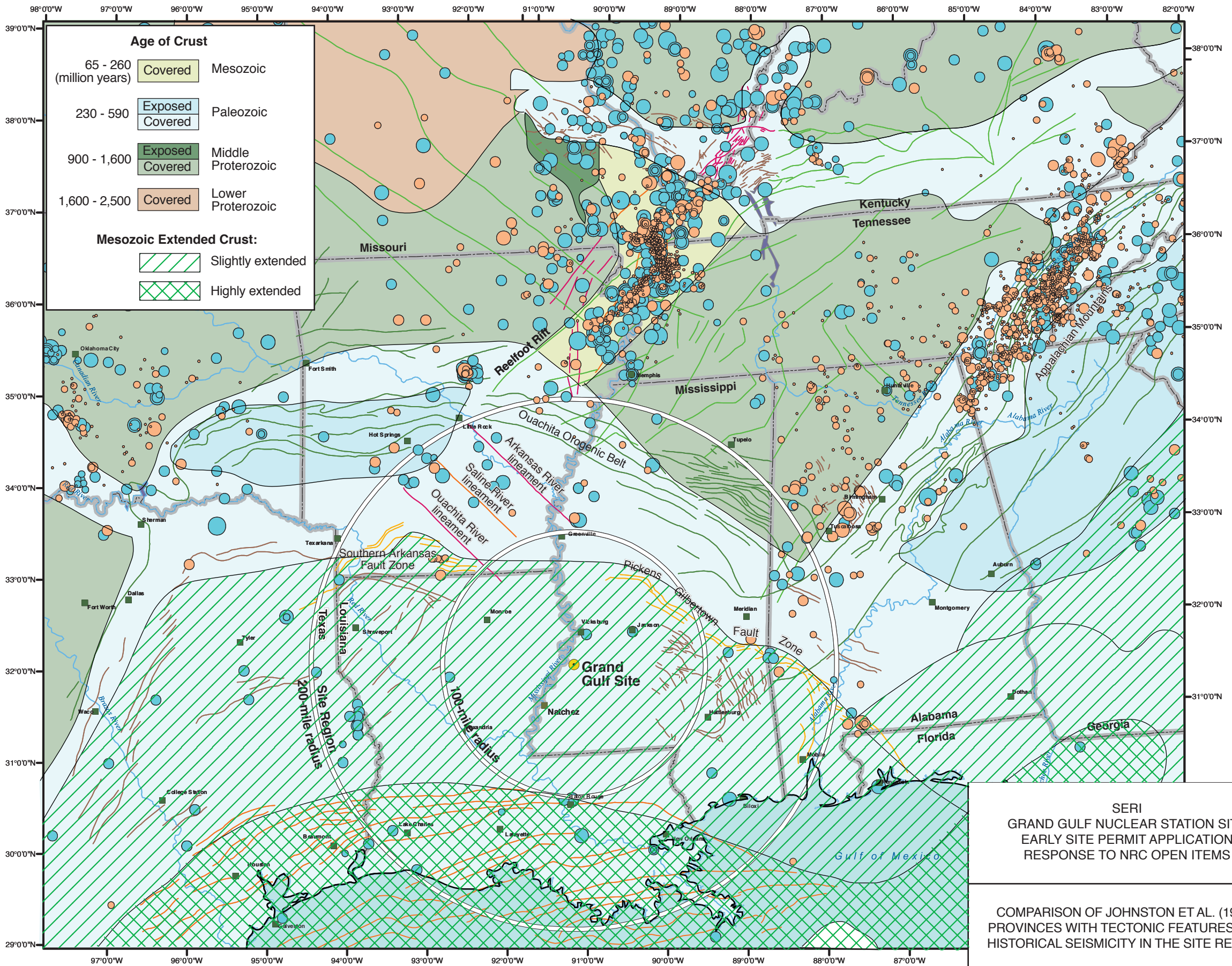
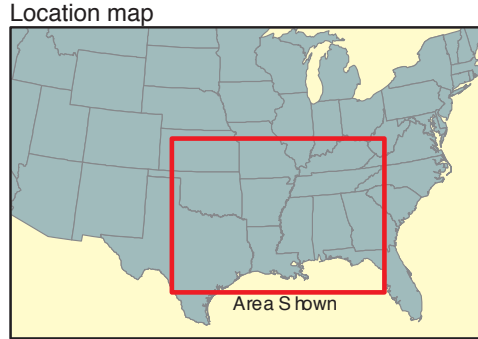
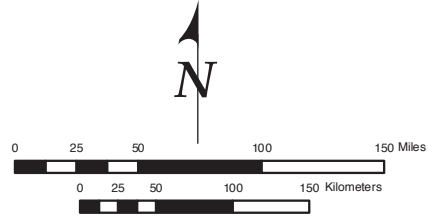


- Explanation**
- Grand Gulf Site
 - Major city
 - Major river
 - State boundary
- Fault Zones**
- Quaternary/Holocene
 - Possible Quaternary
 - Miocene
 - Cretaceous
 - Mississippian/Pennsylvanian
 - Proterozoic
 - Undifferentiated
 - likely Paleozoic in North
 - likely Miocene-Pliocene in South

- Seismic Activity (1627 - 1984)**
Magnitude (Mb)
- 0.00 - 1.99
 - 2.00 - 2.99
 - 3.00 - 3.99
 - 4.00 - 4.99
 - 5.00 - 7.99

- Seismic Activity (1985 - 2004)**
Magnitude (Mb)
- 0.00 - 1.99
 - 2.00 - 2.99
 - 3.00 - 3.99
 - 4.00 - 4.99
 - 5.00 - 7.99

Pre-1985 seismicity from EPRI (1986) catalog and post-1984 seismicity from ANSS-CNSS (2004) composite catalog.



SERI
GRAND GULF NUCLEAR STATION SITE
EARLY SITE PERMIT APPLICATION
RESPONSE TO NRC OPEN ITEMS

COMPARISON OF JOHNSTON ET AL. (1994)
PROVINCES WITH TECTONIC FEATURES AND
HISTORICAL SEISMICITY IN THE SITE REGION

FIGURE OI 2.5-1-1