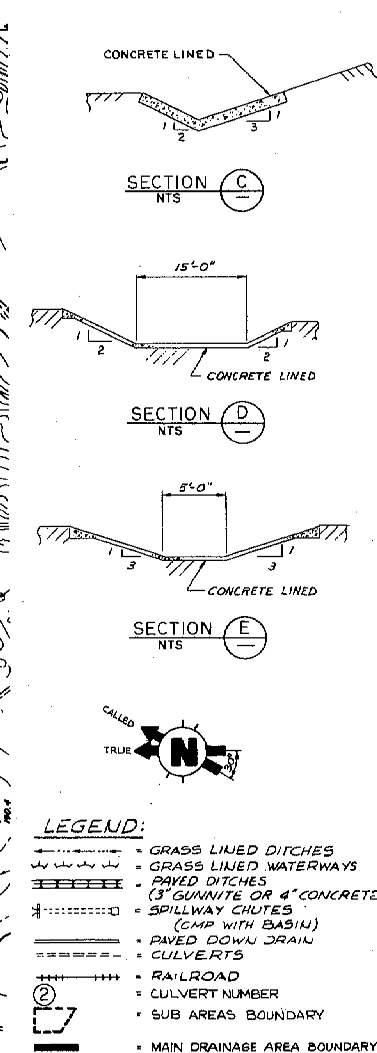
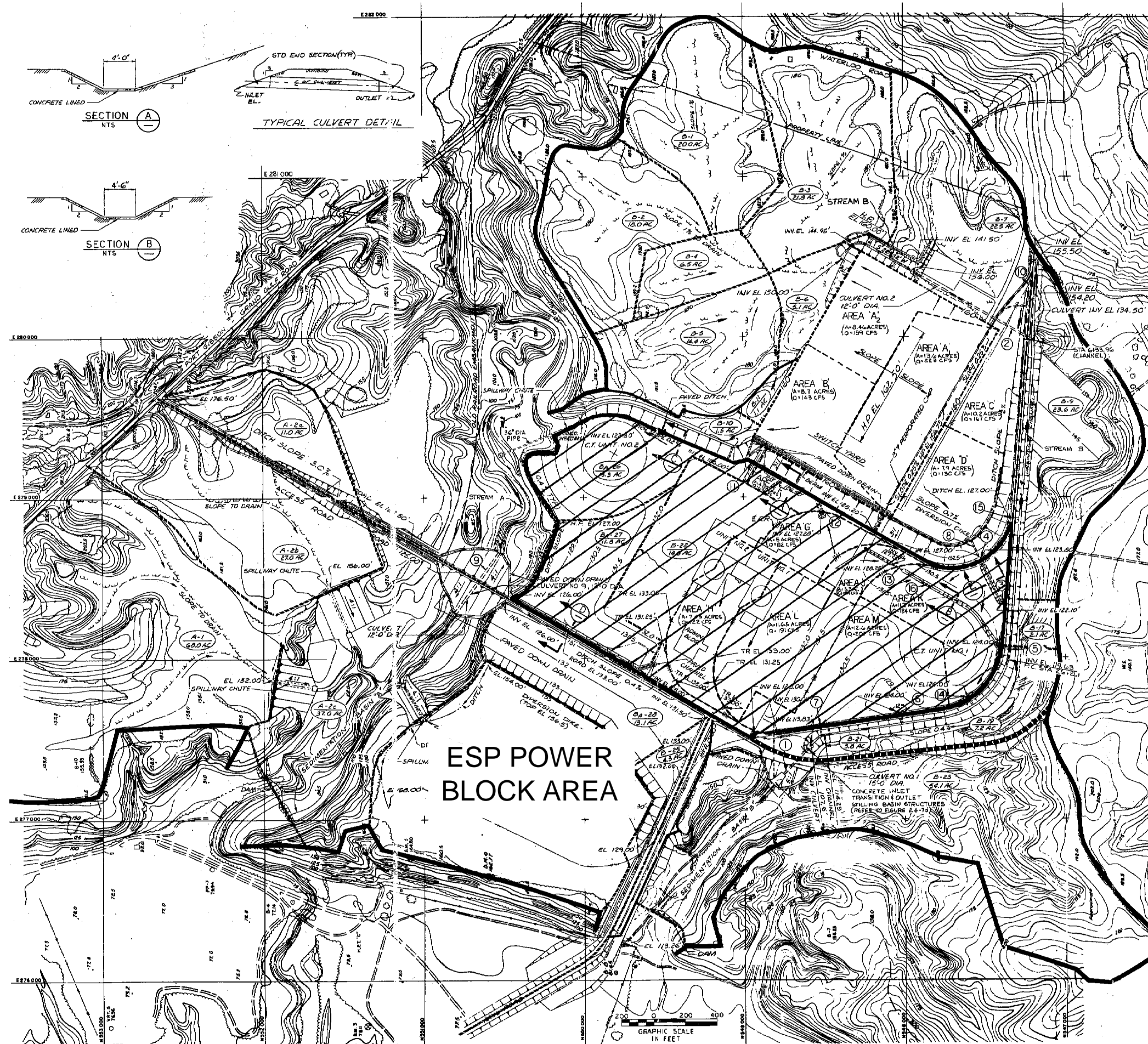


NOTE:
THESE HYDROGRAPHS WERE DEVELOPED
FOR GGNS UNIT 1 USING RAINFALL RATES
FROM HMR 33 AND USACE EM-1110-2-1411
AND ARE PRESENTED FOR INFORMATION
ONLY.

SERI
GRAND GULF NUCLEAR STATION SITE
EARLY SITE PERMIT APPLICATION
SITE SAFETY ANALYSIS REPORT

BASIN A & B
HYDROGRAPHS
(UFSAR FIGURE 2.4-10)

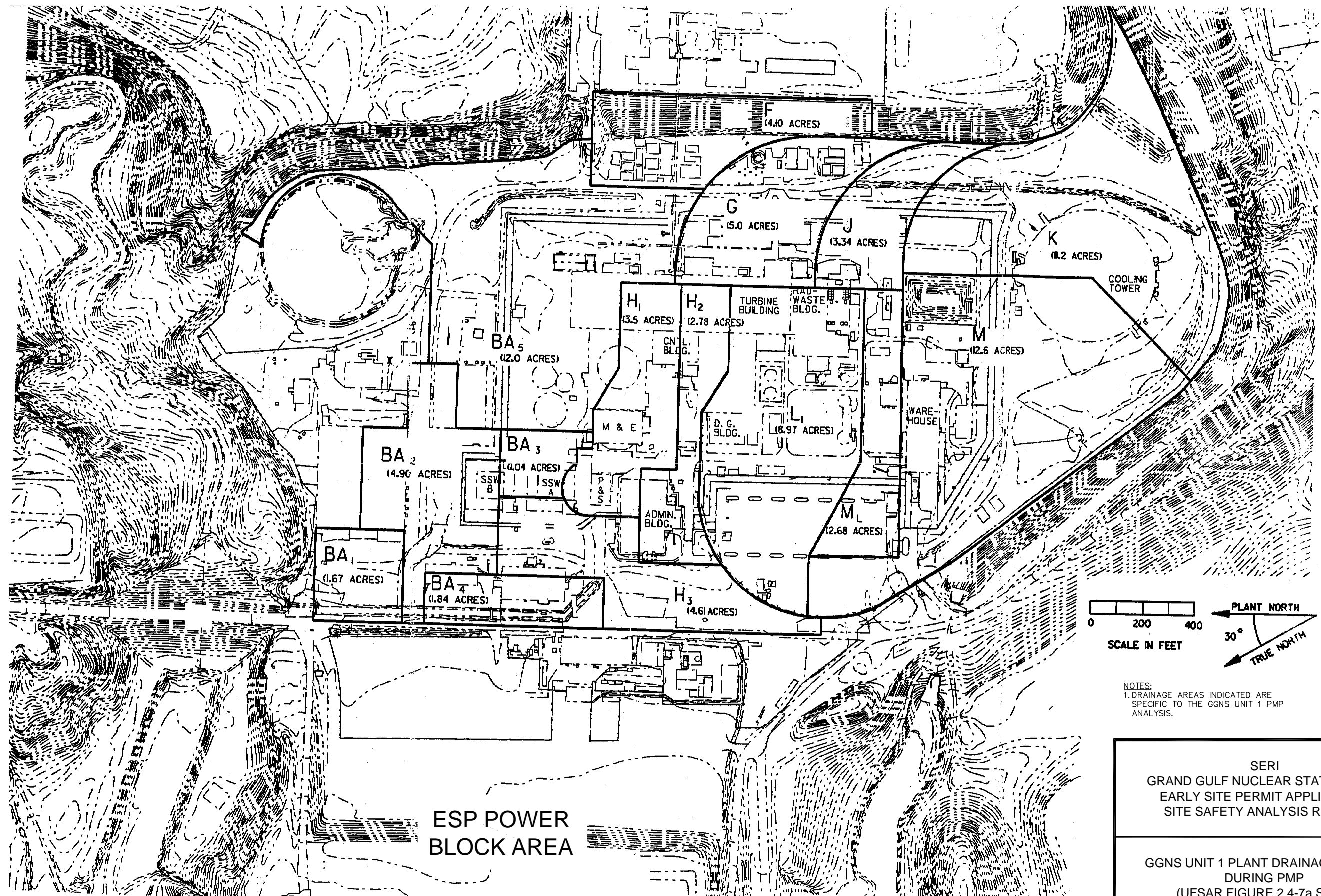


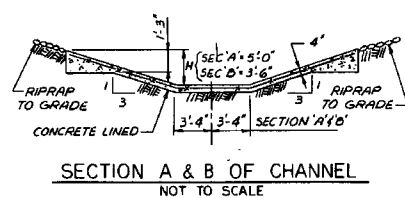
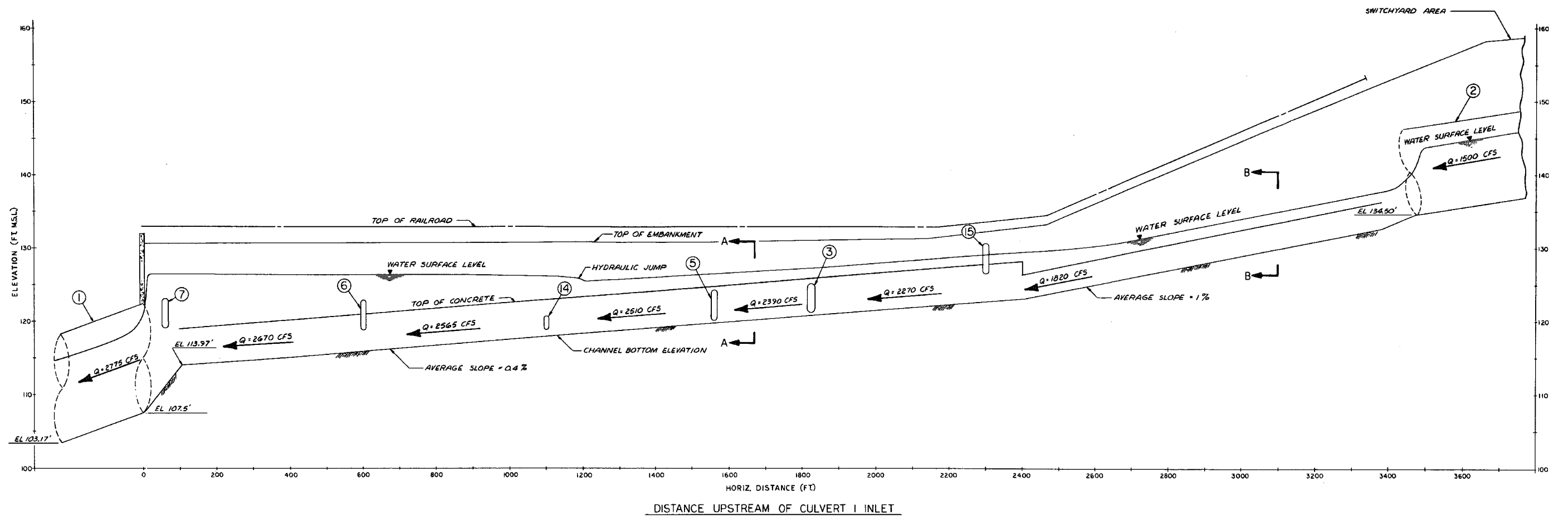
NOTES:
 1. FOR DETAILS OF CULVERTS REFER TO TABLE 2.4-12 (UFSAR TABLE 2.4-28).
 2. FOR DRAINAGE AREA BOUNDARIES IN SHADDED AREA, SEE SHEET 2.
 3. STRUCTURES FOR UNIT 2 ARE FOR INFORMATION ONLY, SINCE CONSTRUCTION OF UNIT 2 WAS SUSPENDED ON 8/21/81.
 4. RAILROAD DATA AND LOCATIONS ARE FOR INFORMATION ONLY TO IDENTIFY LOCATION OF ORIGINAL RR BED. MOST OF THE RR HAS BEEN REMOVED.
 5. DRAINAGE AREAS & FLOW RATES (Q) INDICATED ARE SPECIFIC TO GGNS UNIT 1 PMP ANALYSIS.

SERI
 GRAND GULF NUCLEAR STATION SITE
 EARLY SITE PERMIT APPLICATION
 SITE SAFETY ANALYSIS REPORT

GGNS UNIT 1 PLANT DRAINAGE AREAS
 DURING PMP
 (UFSAR FIGURE 2.4-7a SH. 1)

FIGURE 2.4-13 SHEET 1 OF 2 REV. 1





⑤
REPRESENTS CULVERT LOCATION

NOTES:

1. FOR DETAIL OF CULVERTS REFER TO TABLE 2.4-12 (GGNS UFSAR TABLE 2.4-28).
2. FOR PLAN OF PERIPHERAL DRAINAGE DITCH OF BASIN B REFER TO FIGURES 2.4-13 & 2.4-18 (GGNS UFSAR FIGURE 2.4-7 & 2.4-7A).
3. FLOW RATES (Q) SHOWN ARE FOR GGNS UNIT 1 PMP ANALYSIS ONLY.

SERI
GRAND GULF NUCLEAR STATION SITE
EARLY SITE PERMIT APPLICATION
SITE SAFETY ANALYSIS REPORT

PROFILE AND SECTIONS
OF PERIPHERAL DRAINAGE
FOR BASIN B
(UFSAR FIGURE 2.4-16)

FIGURE 2.4-24

REV. 1