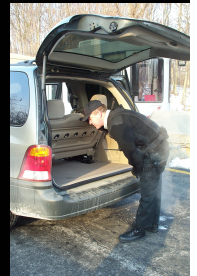


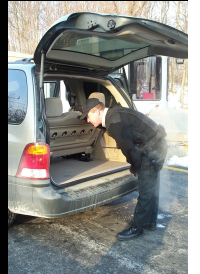
Agenda

- **Overview** **Chris Schwarz**
- **Plant Performance** **Paul Rubin**
- **Corrective Action Program** **Jim Comiotes**
- **Engineering** **Don Leach**
- **Closing** **Chris Schwarz**



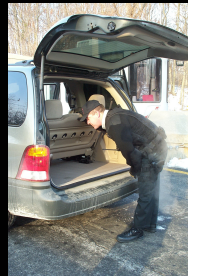
Overview

Chris Schwarz
Site Vice President
(Acting)



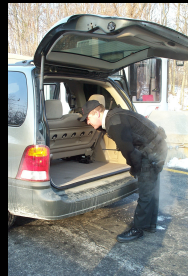
Progress at IPEC

- **Good Operating Run for Both Units**
- **Fewer Challenges for Operators**
- **Improving Material Condition**
- **Successful Emergency Plan Exercise**



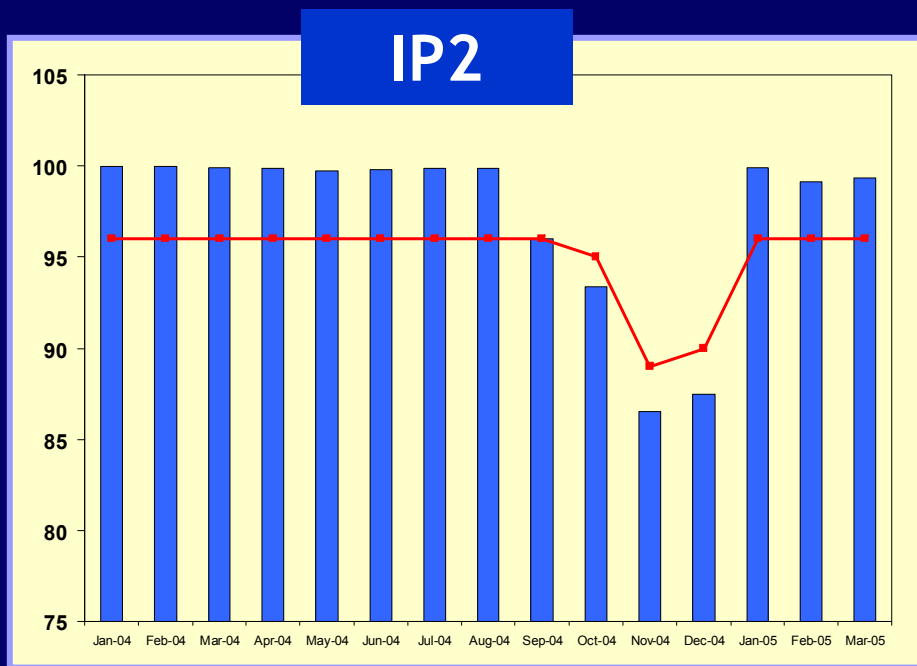
Plant Performance

Paul Rubin
General Manager, Plant Operations
(Acting)

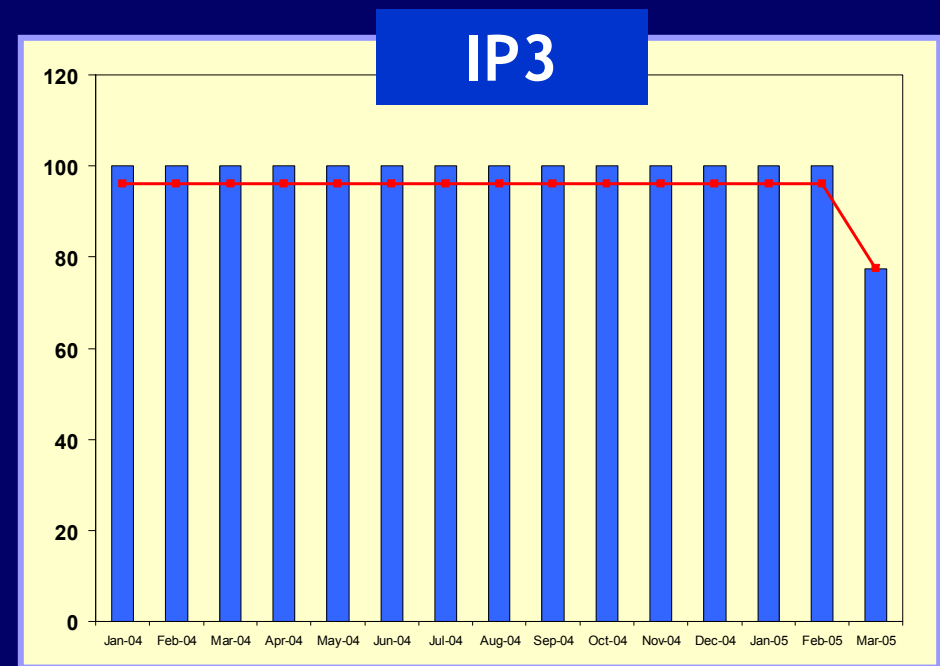


Plant Performance

- Supervisory Effectiveness



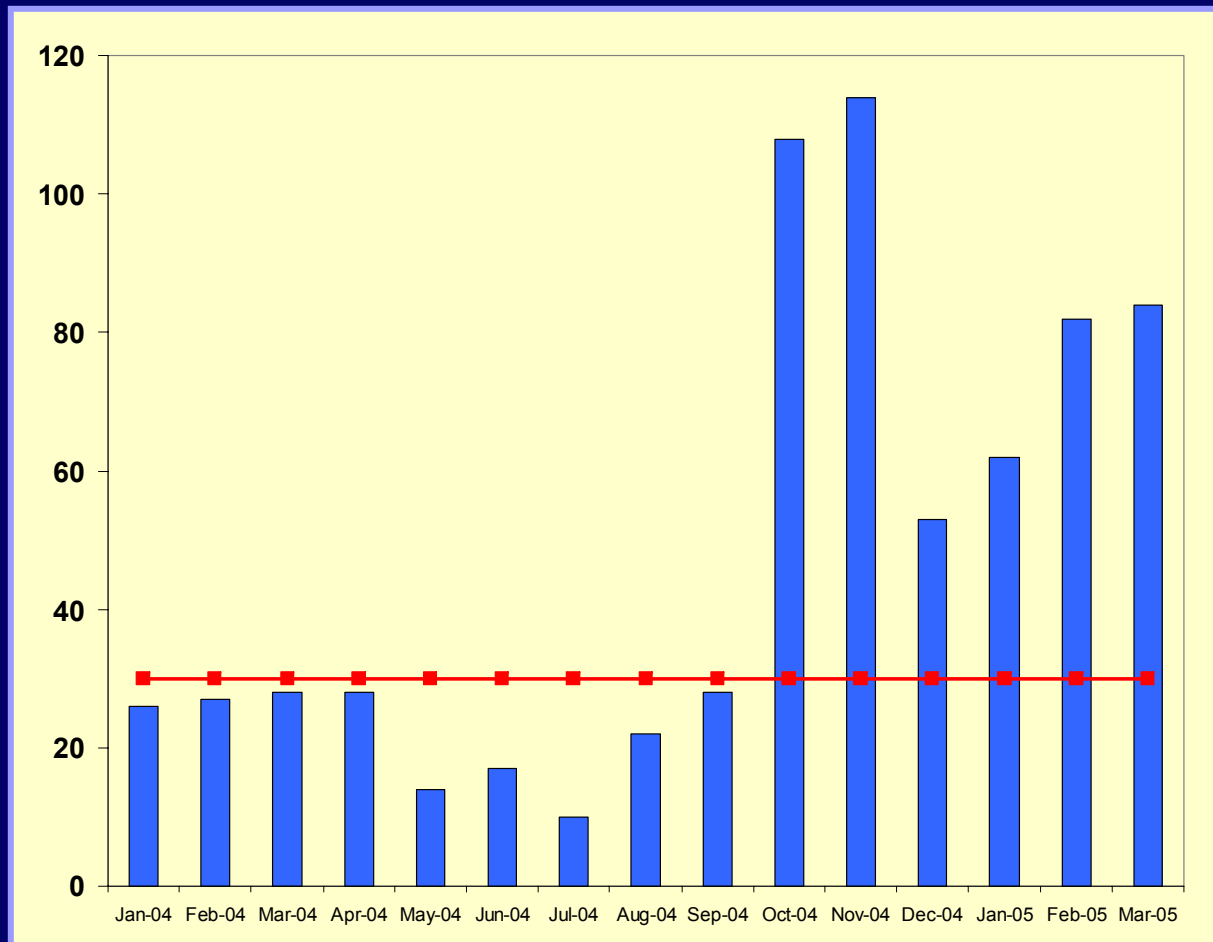
• IP2 Capability Factor
Jan 04- Mar 05



• IP3 Capability Factor
Jan 04- Mar 05

Plant Performance

- **Work Management/ Work Control**

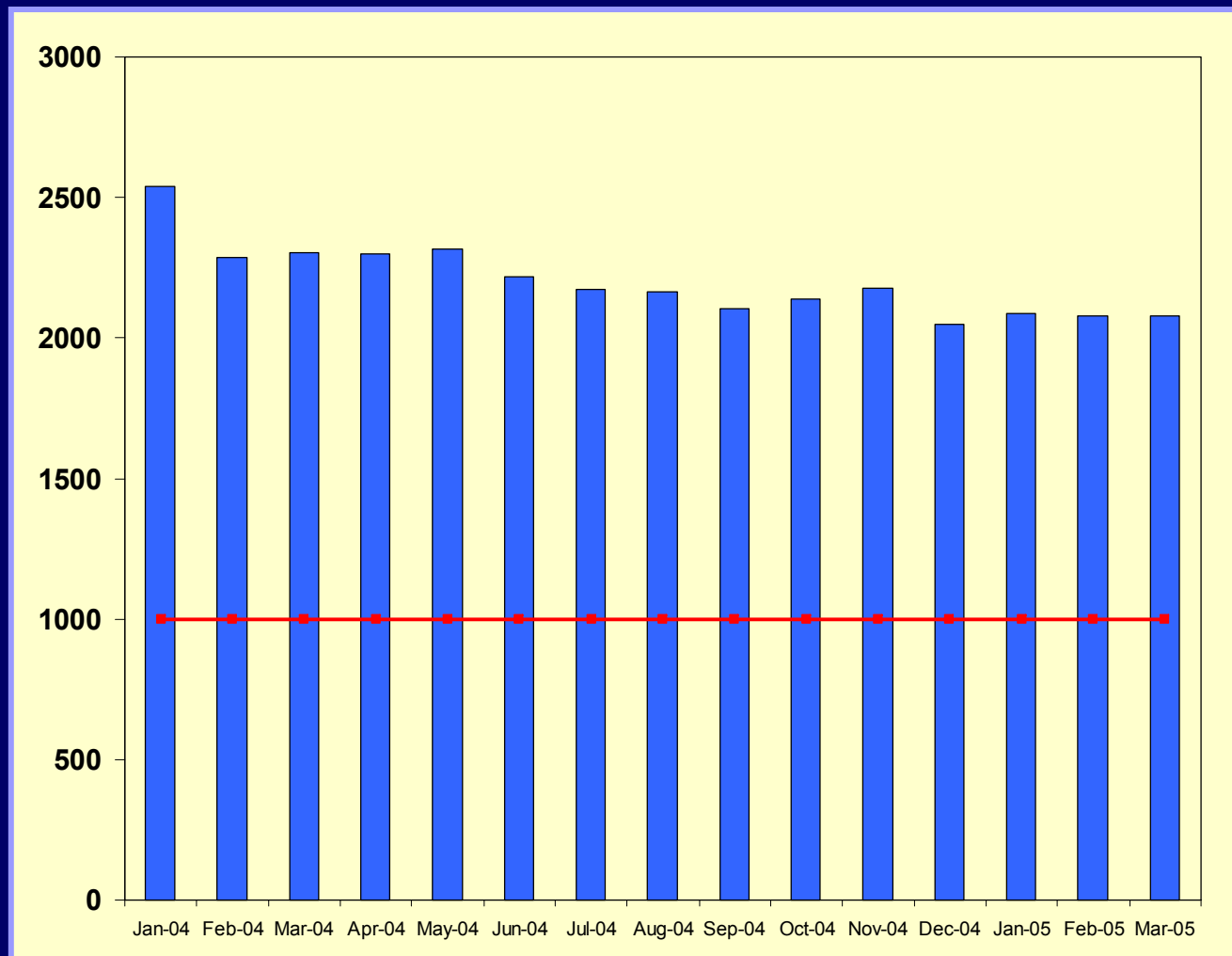


**IPEC
Corrective
Maintenance
Backlog**

Jan 04- Mar 05

Elective Maintenance

- **Work Management/ Work Control**

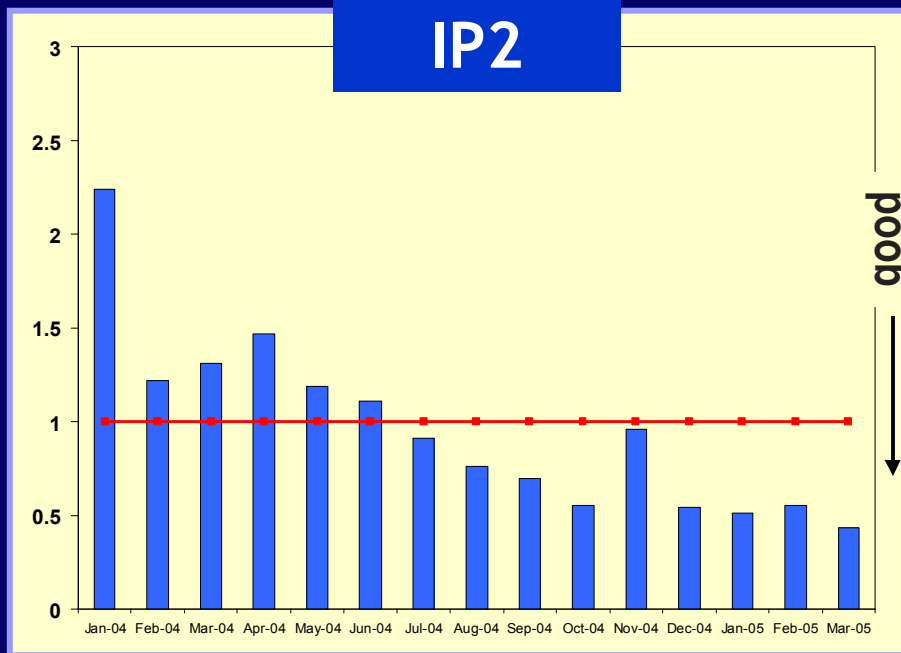


**IPEC
Elective
Maintenance
Backlog**

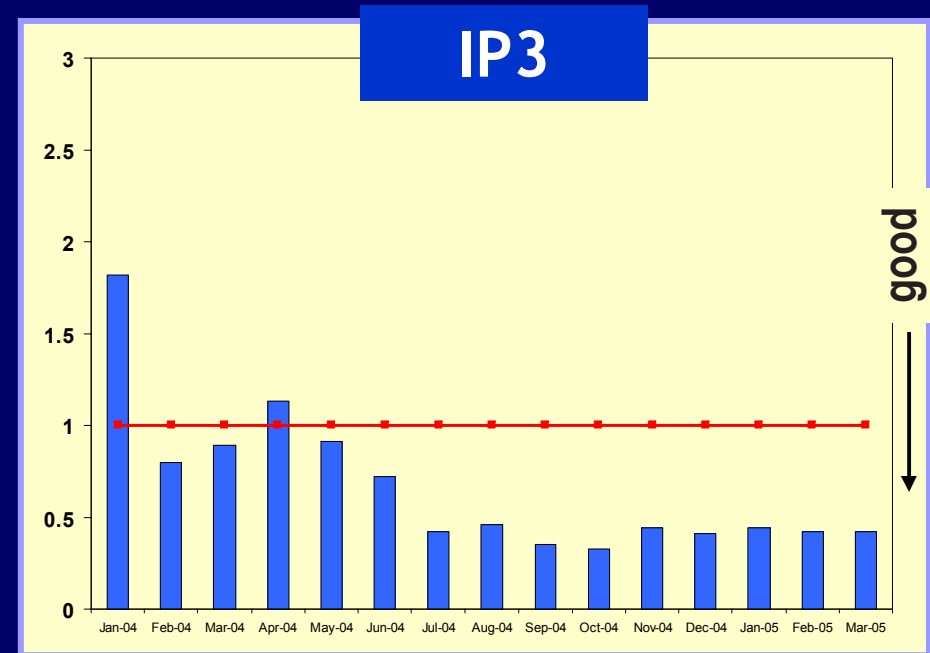
Jan 04- Mar 05

Plant Performance

- **W**ork Management/Work Control



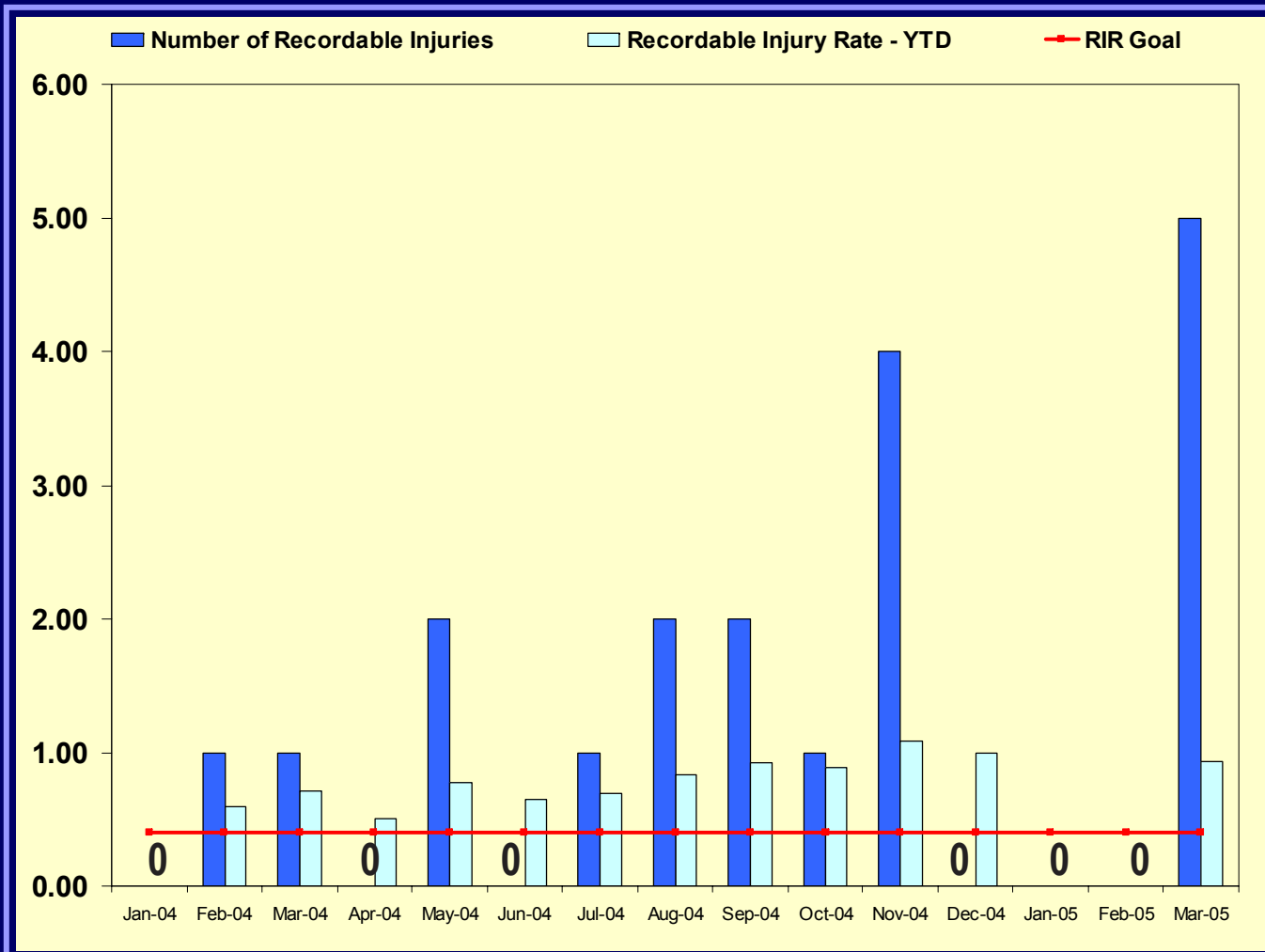
Operator Aggregate
Index



Operator Aggregate
Index

Plant Performance

- Industrial Safety/Human Performance**



**IPEC
Recordable
Injury Rate**

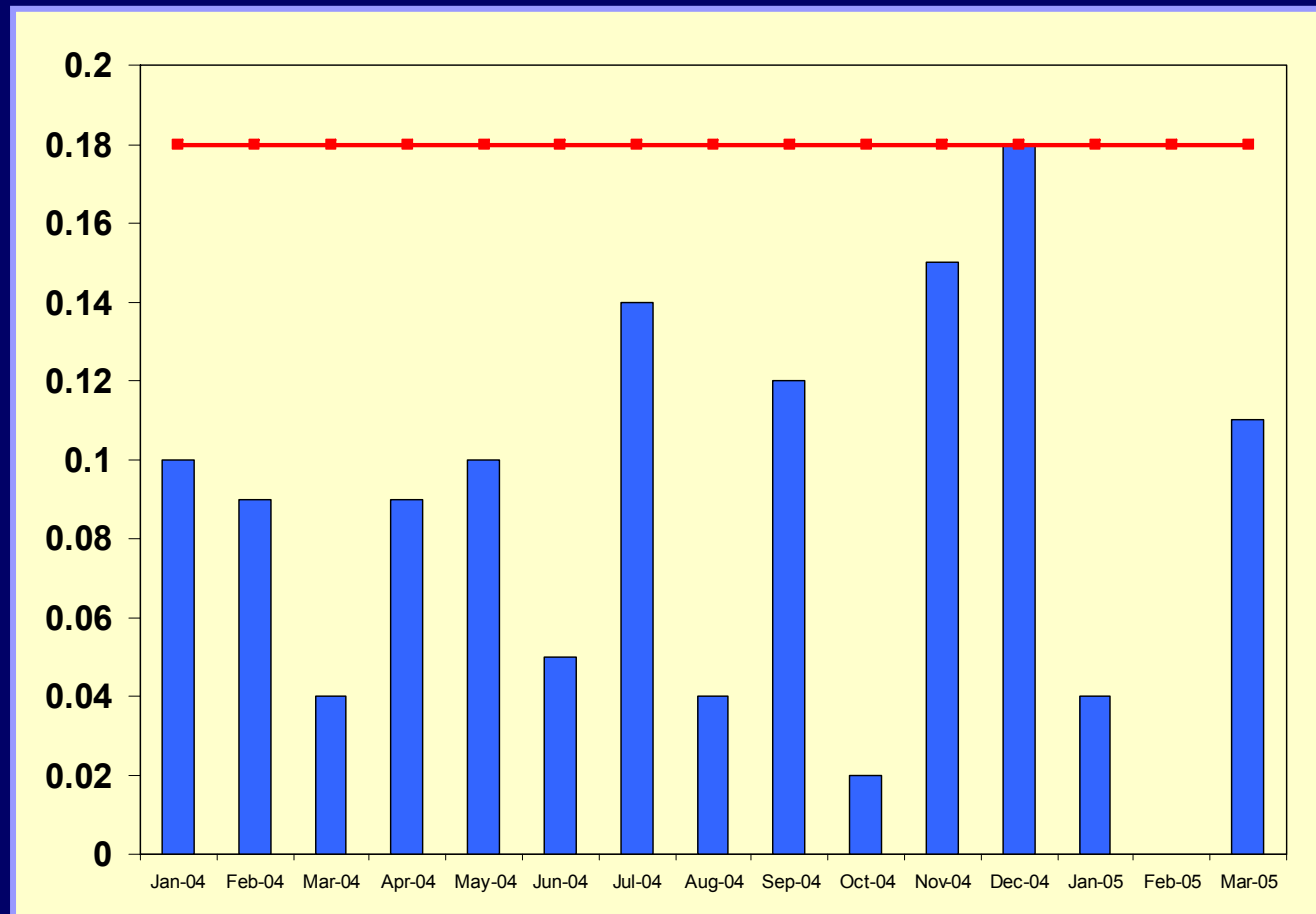
Jan 04- Mar 05

**RIR = number of
recordable
injuries/200,000
person-hours**

0

Plant Performance

- Industrial Safety/Human Performance



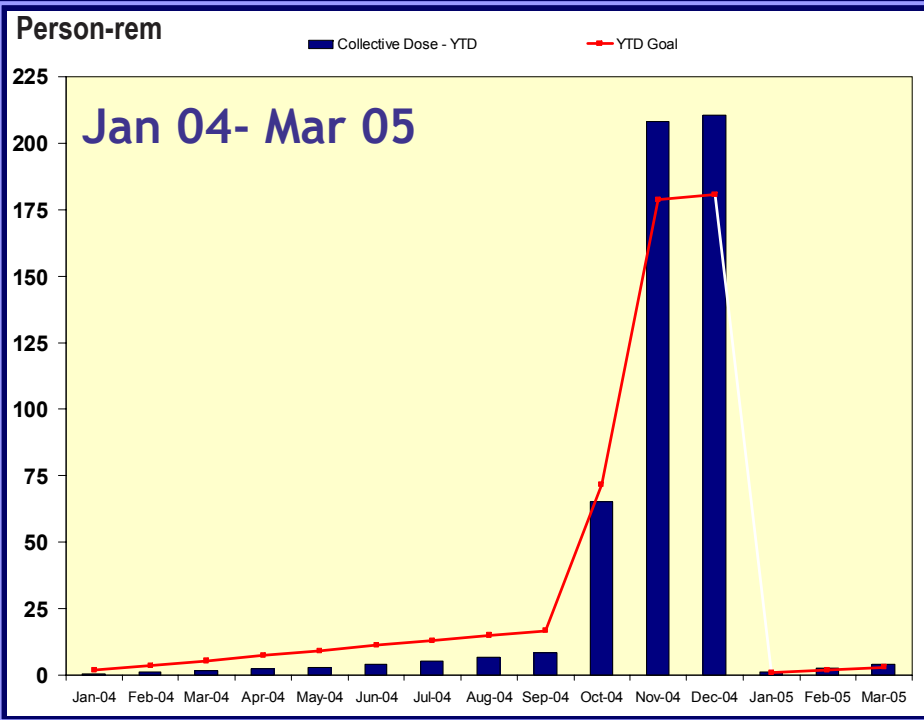
IPEC
Human
Performance
Error Rate

Jan 04- Mar 05

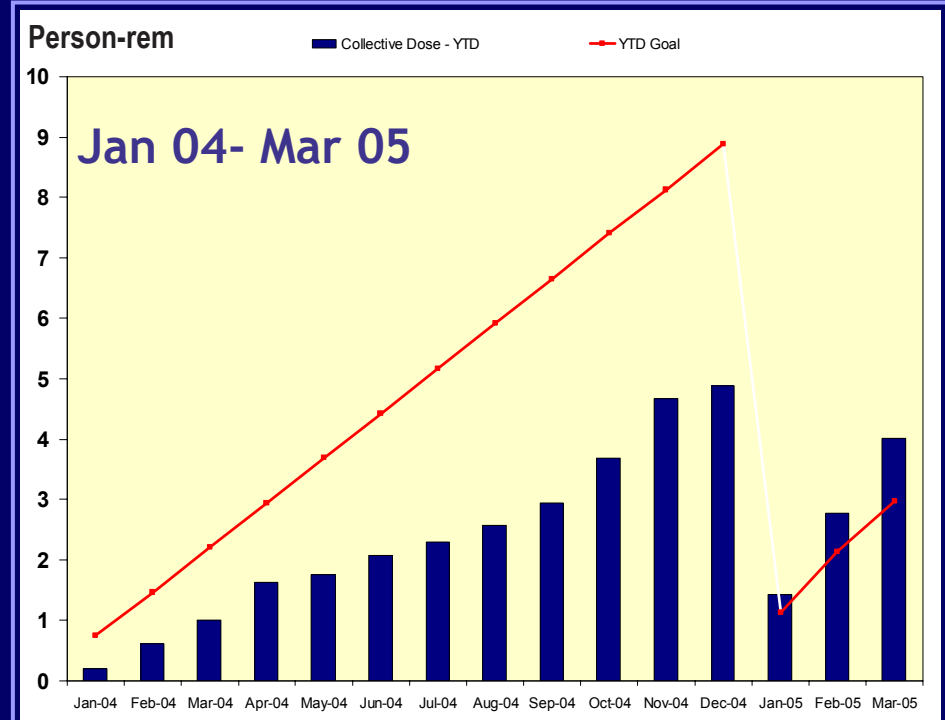
HU error rate =
number human
performance
errors/10,000
work hours

Radiation Exposure

- Industrial Safety/ Human Performance



IP2 on line and outage exposure



IP3 on line exposure

Plant Performance

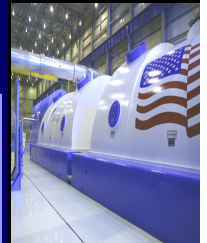
- **Material Condition**



New HP Turbines

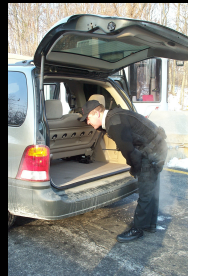


New I&C Shop



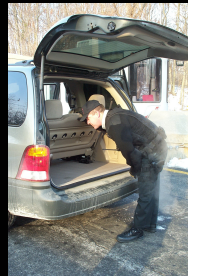
Corrective Action Program

Jim Comiotes
Director, Nuclear Safety Assurance



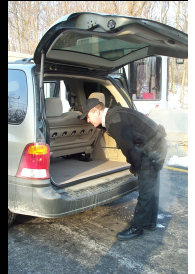
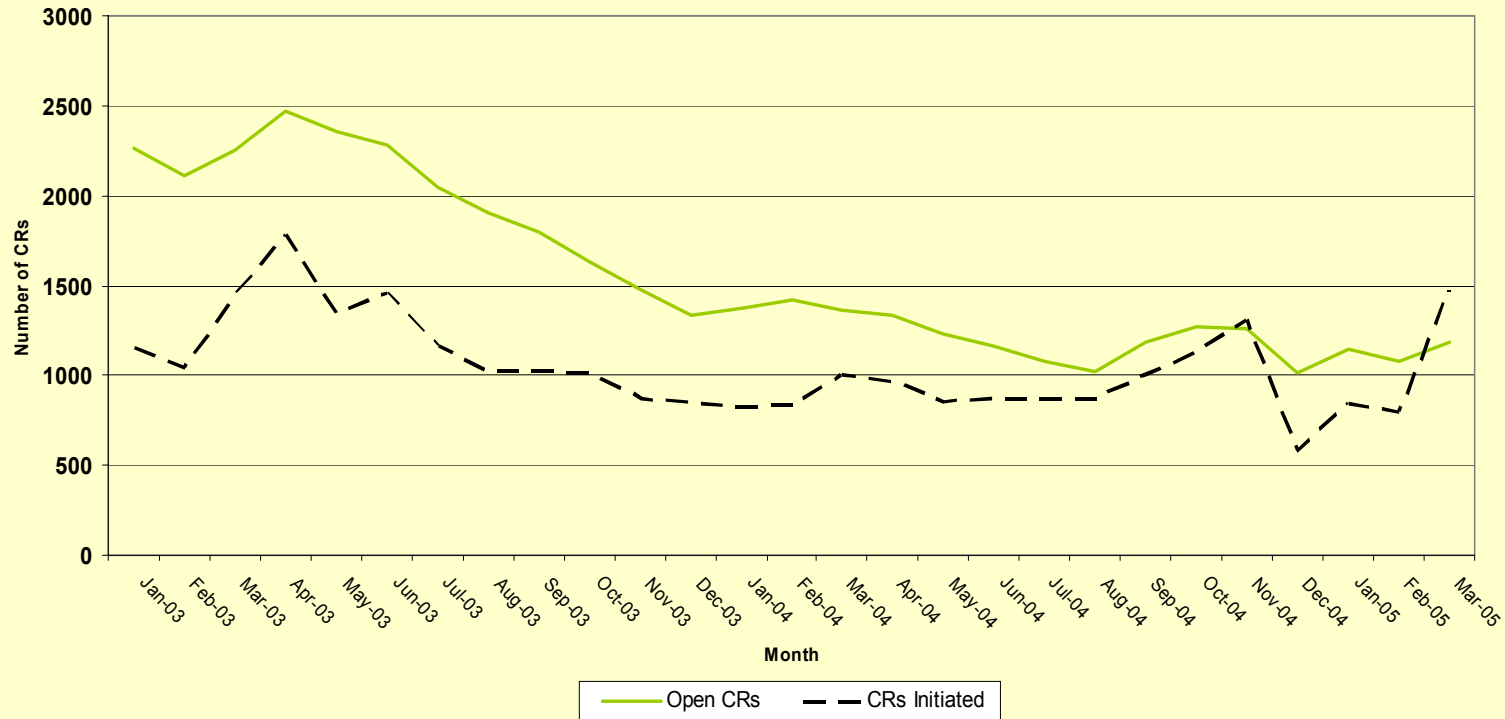
Corrective Action Program Station Improvements

- Condition Report Backlog Reduction
- Reduction in Significant Events and Higher Level Non-significant Events
- Corrective Action Program Quality and Timeliness Improvement (Performance Index)



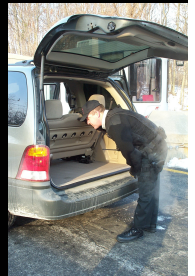
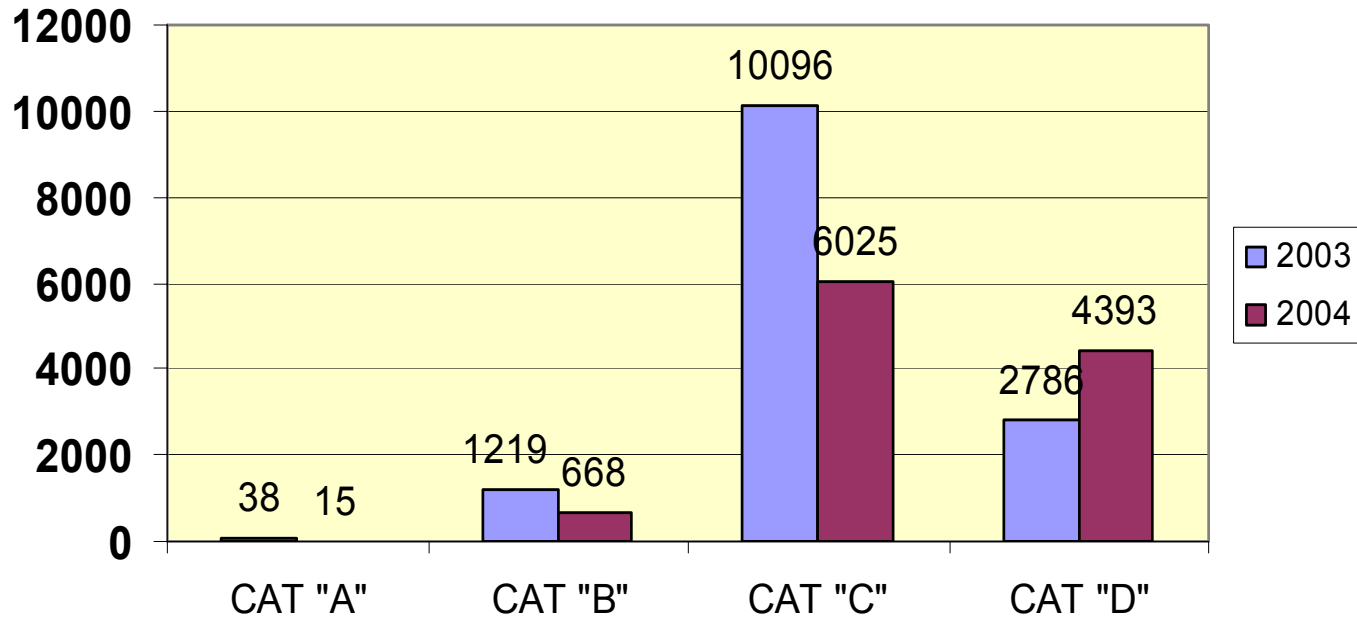
Condition Report Backlog Reduction

IPEC Open and Initiated Condition Reports



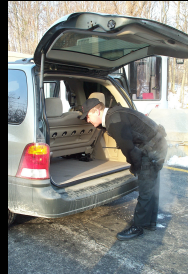
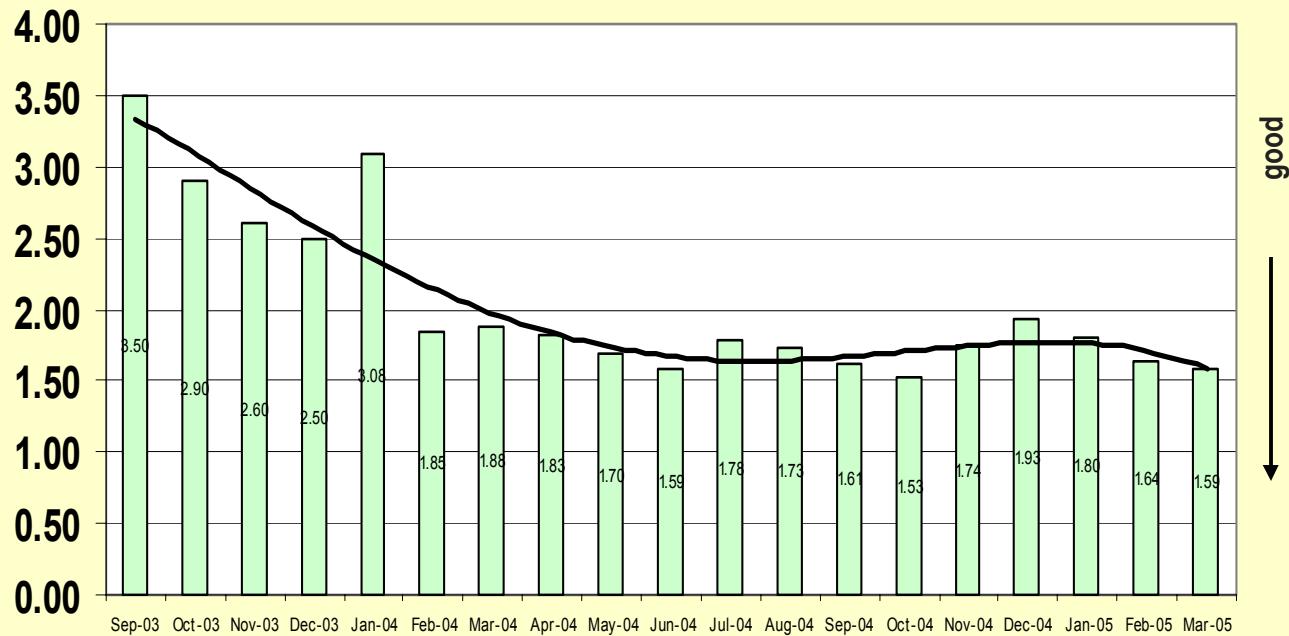
Reduction in Significant Condition Reports

IPEC CR Category Comparison 2003/2004



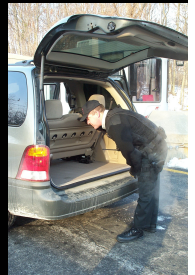
Corrective Action Program Performance Index

IPEC CAP Index Overall Station Average Trend Chart



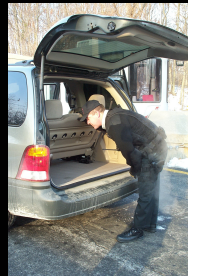
CURRENT STATUS - CORRECTIVE ACTION PROGRAM

- Improvements achieved in backlog reduction and significance of Condition Reports
- Implementation consistency still requires attention
 - Evaluation rigor
 - Adequacy of troubleshooting techniques
- Management oversight remains high
 - Independent reviews
 - Effectiveness reviews
 - Self-assessments



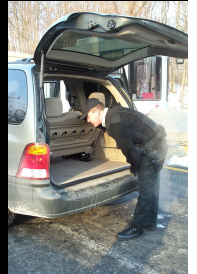
Engineering

Don Leach
Director, Engineering

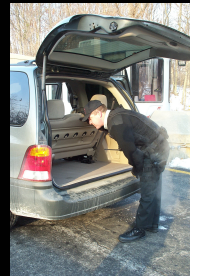
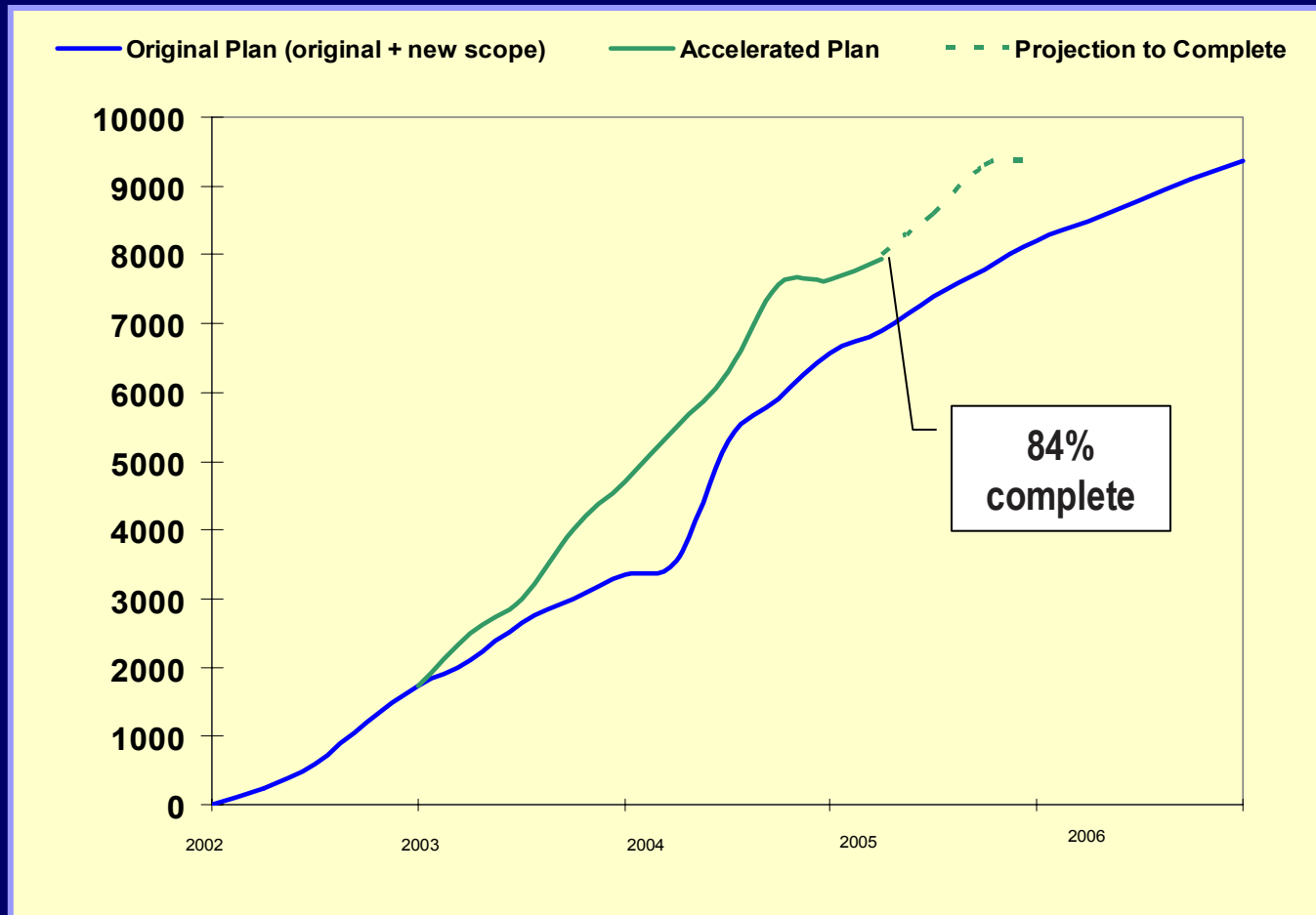


Engineering

- **Design Basis Initiative**
- **Focus Areas**

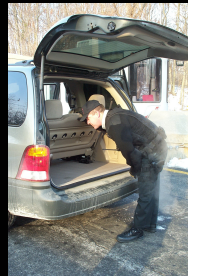


Design Basis Initiative



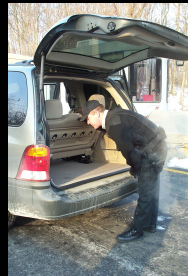
Engineering Focus Areas

- **Technical Rigor**
- **Troubleshooting**
- **Condition Event Evaluation**

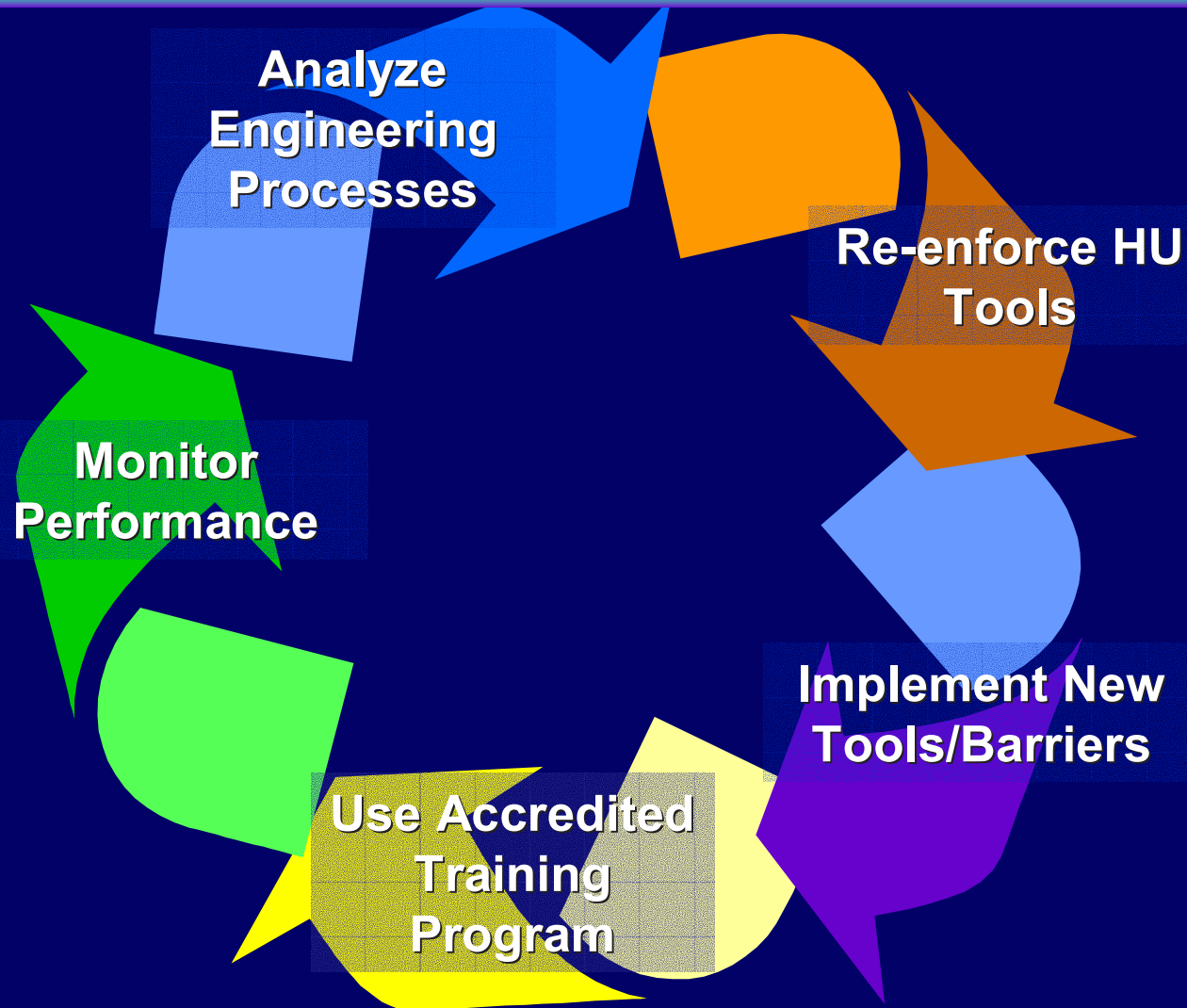


Self-Evaluation

- **Root Cause Analyses**
- **Industry Benchmarking**
- **Independent Assessments and Feedback**
- **Corrective Actions and Improvement Plan**

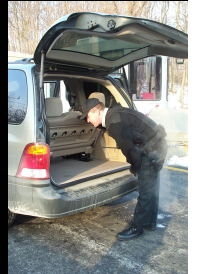


Engineering Improvement Process



Closing Remarks

Chris Schwarz
Site Vice President
(Acting)



Closing Remarks

- **In 2004, we focused on the key management and performance areas that would yield results**
- **We have seen progress in all areas, but we recognize the need to continue improving**
- **Entergy is committed to bringing IPEC up to top decile performance**

