

Clinton Power Station Annual Assessment Meeting

Reactor Oversight Program - CY 2004



Nuclear Regulatory Commission - Region III
Lisle, Illinois

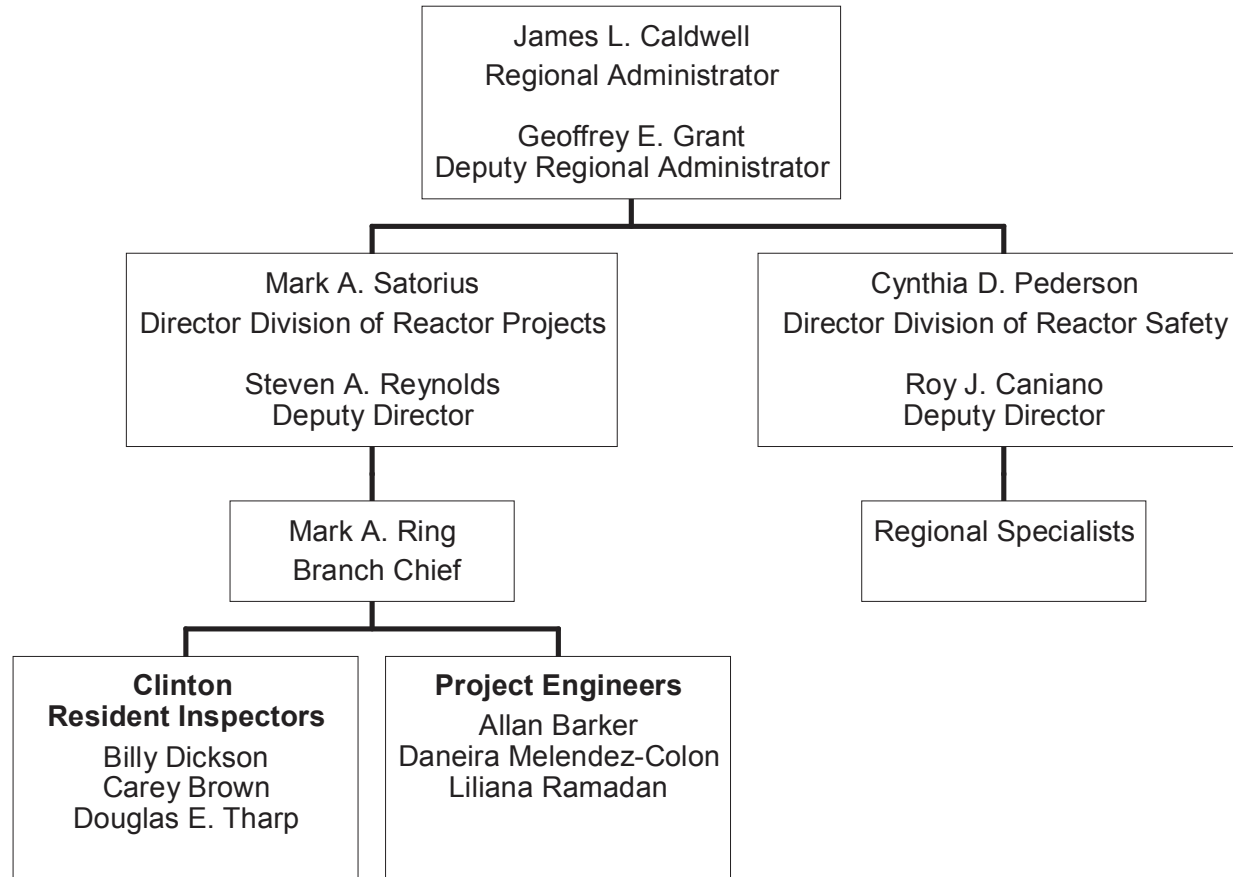
Agenda

- Introduction
- Review of Reactor Oversight Process
- National Summary of Plant Performance
- Discussion of Plant Performance Results
- Licensee Response and Remarks
- NRC Closing Remarks
- Break
- NRC available to address public questions

NRC Representatives

- Mark Satorius, Director, Division Reactor Projects
 - (630) 829-9600
- Steve Reynolds, Deputy Division Director, DRP
 - (630) 829-9601
- Kahtan Jabbour, Project Manager, NRR
 - (301) 415-1496
- Billy Dickson, Senior Resident Inspector
 - (217) 935-9521
- Carey Brown & Doug Tharp, Resident Inspectors
 - (217) 935-9521
- Allan Barker, Senior Project Engineer (starts May 1, 2005)
 - (630) 829-9500
- Mark Ring, Branch Chief
 - (630) 829-9703

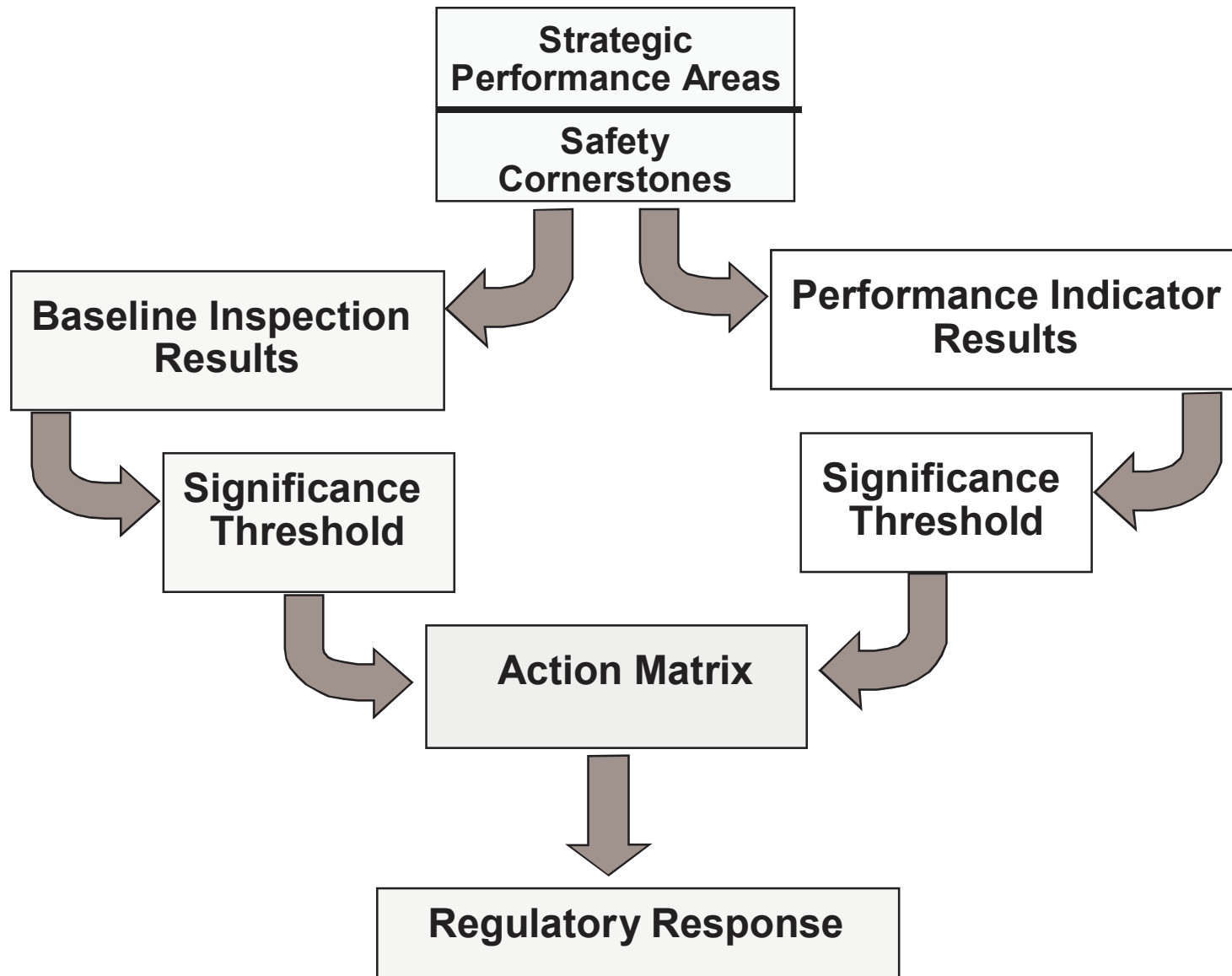
Region III Organization



NRC Performance Goals

- Safety: Ensure protection of the public health and safety and the environment
- Security: Enhance the secure use and management of radioactive materials
- Openness: Ensure openness in our regulatory process
- Effectiveness: Ensure that NRC actions are effective, efficient, realistic, and timely
- Management: Ensure excellence in agency management to carry out the NRC's strategic objective

Reactor Oversight Process



Examples of Baseline Inspections

- Equipment Alignment ~92 hrs/yr
- Triennial Fire Protection ~200 hrs every 3 yrs
- Operator Response ~125 hrs/yr
- Emergency Preparedness ~80 hrs/yr
- Rad Release Controls ~100 hrs every 2 yrs
- Worker Radiation Protection ~100 hrs/yr
- Corrective Action Program ~200 hrs every 2 yrs
- Corrective Action Case Reviews ~60 hrs/yr

Significance Threshold

Performance Indicators

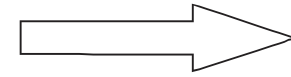
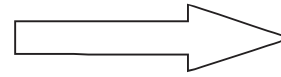
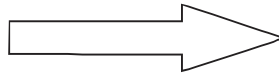
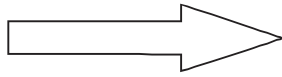
Green:	Only Baseline Inspection
White:	May increase NRC oversight
Yellow:	Requires more NRC oversight
Red:	Requires more NRC oversight

Inspection Findings

Green:	Very Low safety issue
White:	Low to moderate safety issue
Yellow:	Substantial safety issue
Red:	High safety issue

Action Matrix Concept

Licensee Response	Regulatory Response	Degraded Cornerstone	Multiple/Rep. Degraded Cornerstone	Unacceptable Performance
------------------------------	--------------------------------	---------------------------------	---	-------------------------------------



Increasing Safety Significance

Increasing NRC Inspection Efforts

Increasing NRC/Licensee Management Involvement

Increasing Regulatory Actions

Purpose of Today's Meeting

- A public forum for discussion of the licensee's performance
- NRC will address the licensee performance issues identified in the annual assessment letter
- Licensee will respond to the information in the letter and inform the NRC of new or existing programs to maintain or improve their performance

National Summary of Plant Performance

Status at End of CY 2004

Licensee Response	78
Regulatory Response	21
Degraded Cornerstone	0
Multiple/Repetitive Degraded Cornerstone	3
Unacceptable	0
<hr/>	
Total Units	102

*Davis-Besse is in IMC 0350 process

National Summary

- Performance Indicator Results (at end of CY 2004)

- < **Green** 1834

- < **White** 6

- < **Yellow** 0

- < **Red** 0

- Total Inspection Findings (CY 2004)

- < **Green** 778

- < **White** 11

- < **Yellow** 0

- < **Red** 0

Clinton Assessment Results

(Jan 1 - Dec 31, 2004)

- Licensee Response Column of Action Matrix
- No Supplemental Inspections in 2004
- Special Inspection in July 2004 - lightning strike, scram with complications

Safety Significant Findings or PIs

- No greater than Green findings
- No greater than Green Performance Indicators
- No Substantive Cross-Cutting Issues

Clinton Inspection Activities

(Jan 1 - Dec 31, 2004)

- Ninth Refueling Outage -Feb. 2004
- 17 Green findings
- Special Inspection in July 2004 - lightning strike, scram with complications
- Problem Identification & Resolution Inspection - April 2004

Clinton Inspection Activities

(Jan 1 - Dec 31, 2004)

- Multiple Balance of Plant Issues
- Early Site Permit Activities
- Doug Tharp assigned as Resident Inspector - May 2004
- Carey Brown returns to Region - May 2005

Clinton

Annual Assessment Summary

January 1- December 31, 2004

- Exelon operated Clinton in a manner that preserved public health and safety
- All cornerstone objectives were met with no greater than Green findings identified
- NRC plans baseline inspections at Clinton for the remainder of the assessment period

Licensee Response and Remarks

Robert S. Bement

Clinton Site Vice President

Exelon Generation Company

Contacting the NRC

- Report an emergency
< (301) 816-5100 (call collect)
- Report a safety concern:
< (800) 695-7403
< Allegation@nrc.gov
- General information or questions
< www.nrc.gov
< Select “What We Do” for Public Affairs

Reference Sources

- Reactor Oversight Process
< <http://www.nrc.gov/NRR/OVERSIGHT/ASSESS/index.html>
- Public Electronic Reading Room
< <http://www.nrc.gov/reading-rm.html>
- Public Document Room
< 1-800-397-4209 (Toll Free)