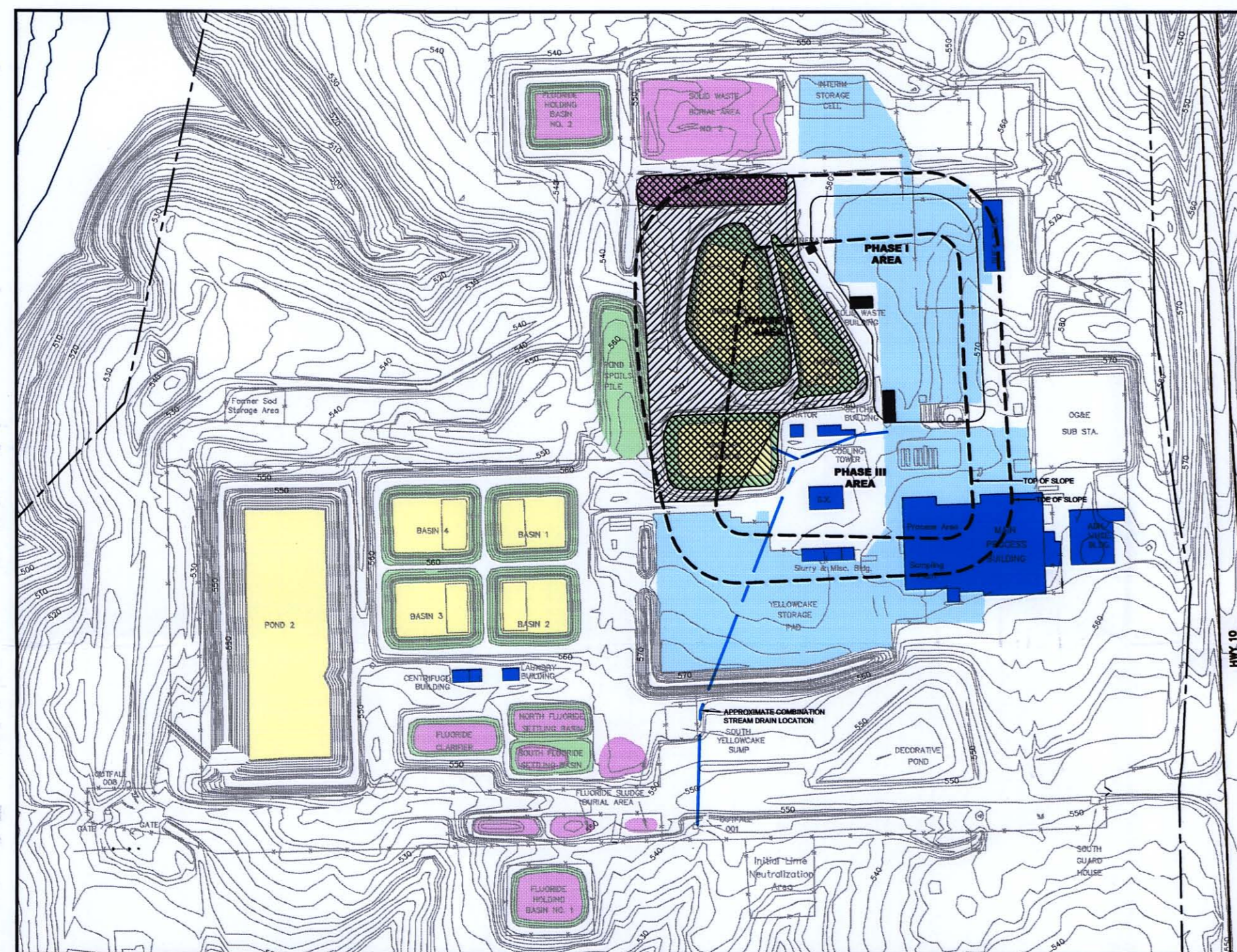


SCALE: HORIZ. 1"=60'
VERT. 1"=60'

DISPOSAL CELL CROSS SECTIONS



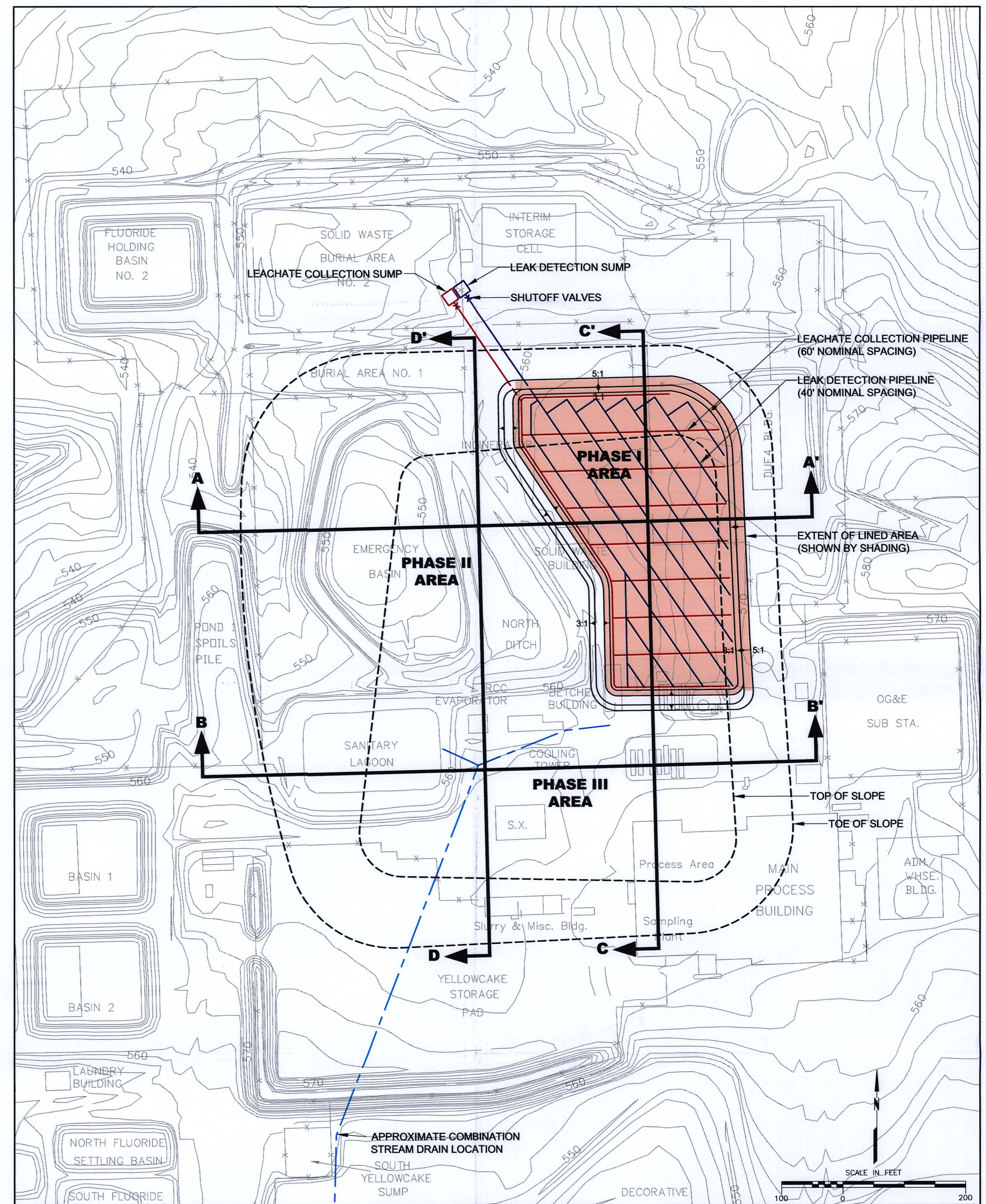
EXCAVATION LEGEND

- EXCAVATED FOR BERM MATERIAL
- EXCAVATED FOR INTERIOR MATERIAL
- TEMPORARILY STORED DEBRIS

NOTE: SEE DRAWING 2 FOR DISPOSED MATERIAL LEGEND

SCALE IN FEET
0 300

LOCATION OF MATERIALS TO BE REMOVED OR EXCAVATED FOR THIS PHASE



DISPOSAL CELL LAYOUT

| No. | DESCRIPTION | BY | CHKD. | APPROVED | DATE |
|-----|------------------------------------|-----|-------|----------|-------|
| 1 | ISSUED FOR PERMITTING | CLS | | | 12/02 |
| 2 | UPDATED LINER SYSTEM | CLS | | | 8/03 |
| 3 | DISPOSAL CELL CONSTRUCTION PLAN | CLS | | | 2/04 |
| 4 | MODIFIED FROM SETTLEMENT AGREEMENT | CLS | | | 2/05 |

| DWG No. | DRAWING TITLE |
|---------|---------------|
| | |

| ENGINEERING RECORD | BY | DATE |
|--------------------|-----|-------|
| PRELIMINARY DESIGN | CLS | 10/02 |
| CELL OPERATIONS | DAS | 2/04 |

PREPARED BY

consulting scientists and engineers
Fort Collins, CO
970 223-9600

PREPARED FOR

SEQUOYAH FUELS
A GENERAL ATOMICS COMPANY

| TITLE | | | |
|--------------------------------|---------------------------|---------|----------|
| PHASE I CELL LAYOUT | | | |
| PROJECT: 100734 | DATE: FEBRUARY 2005 | DRAWING | REVISION |
| SCALE: AS SHOWN | AS FILE: SITE-06-09-REV-D | 6 | |

D-09