



Blackford Community Hospital

March 23, 2005

U.S. Nuclear Regulatory Commission
Materials Licensing Section
2443 Warrenville Road, Suite 210
Lisle, IL 60532-4352

Dear Sir or Madam:

Blackford Community Hospital would like to terminate its Byproduct Materials License, Number 13-20449-01. As of January 19, 2005, we are no longer engaged in activities involving byproduct materials. Enclosed is a close-out performed on our nuclear medicine department.

If there are any questions concerning this license termination, please contact our nuclear medicine consultant, Patrick Byrne, M. Eng. at 877-317-5811.

Sincerely,

Steven West, CEO

MAR 29 2005

Close-out Survey of Blackford County Hospital (13-20449-01)

Performed by: Patrick J. Byrne, M.Eng.
Medical Physics Consultants, Inc.

James Garrett, C.N.M.T.
Blackford County Hospital

Wipe tests for removable radioactive contamination were taken on 2/2/05 and analyzed in a Ludlum Model 243 (S/N: 145366) Shielded Well Scintillator coupled to a Ludlum Model 2200 (S/N: 138705) Scaler Ratemeter. A window of 50 to 400 keV was used to analyze the wipes. The efficiency of this system for Cobalt-57 is 1.17 dpm/cpm.

The radiation levels survey was performed on 2/2/05 by Patrick Byrne, using a Ludlum Model 14C Geiger-Muller survey meter (S/N: 89375) with an end-window probe. The meter was calibrated on 12/05/04. The range used for the radiation level survey was 0.0 to 0.2 mR/hr.

Visual Inspection

The area was visually inspected to ensure that all radioactive waste had been removed. No radioactive material was located in the area.

Radiation Level Survey

No area demonstrated radiation levels in excess of the background reading of 0.03 mR/hr.

Sealed Sources

All sealed sources have been disposed of in the low level radioactive waste facility located in Barnwell, South Carolina. No sealed source had ever been found to be leaking.

Removable Contamination Survey Results

Wipe samples were counted in a Ludlum Model 243 Shielded Well Scintillator (S/N: 145366) coupled to a Ludlum Model 2200 Scaler Ratemeter (S/N: 138705). The efficiency of this system for Cobalt-57 is 1.17 dpm/cpm.

Background: 262 counts per minute

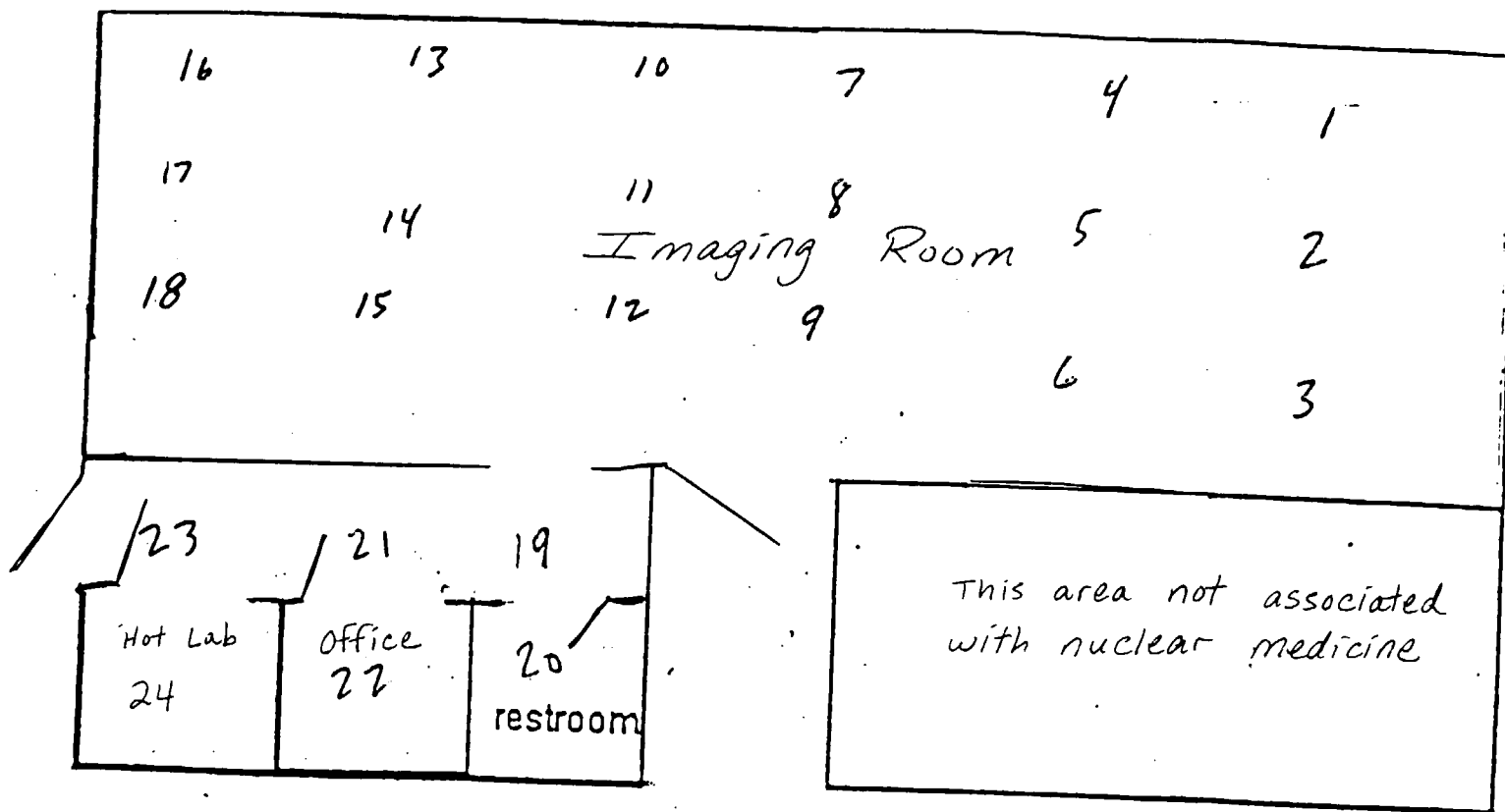
Wipe Number	Gross counts per minute	Net counts per minute	Disintegrations per minute
1	302	40	46.8
2	297	35	41.0
3	292	30	35.1
4	321	59	69.0
5	299	37	43.3
6	298	36	42.2
7	291	29	33.9
8	268	6	7.0
9	260	0	0.0
10	297	35	41.0
11	275	15	17.6
12	268	6	7.0
13	300	38	44.5
14	299	37	43.3
15	325	63	73.7
16	309	47	55.0
17	288	26	30.4
18	283	21	24.6
19	276	14	16.4
20	315	53	62.0
21	341	79	92.4
22	299	37	43.3
23	315	53	62.0
24	280	18	21.1

*Please refer to the attached survey map for wipe locations.

Maximum removable contamination occurred in area 21. Gross count rate = 341 cpm/100cm². Net count rate (gross minus background) = 341 – 262 = 79 cpm/100cm². Net removable disintegrations per minute = 79 cpm/100cm² x 1.17 dpm/cpm = 92.4 dpm/100cm².

Conclusion

As of 2/2/05, all radioactive materials have been removed from the address of use and no removable contamination is present.



Numbers refer to wipe sample locations



Blackford Community Hospital
Affiliate of Cardinal Health System
503 E. Van Cleve St. • Hartford City, IN 47348



Postmeter

012H16207189

\$00.600

03200230205

Mailed From 47348

US POSTAGE

U.S. Nuclear Regulatory Commission
Materials Licensing Section
2443 Warrenville Road, Suite 210
Lisle, IL 60532-4352

60532+4352 21

