



Point Beach Nuclear Plant

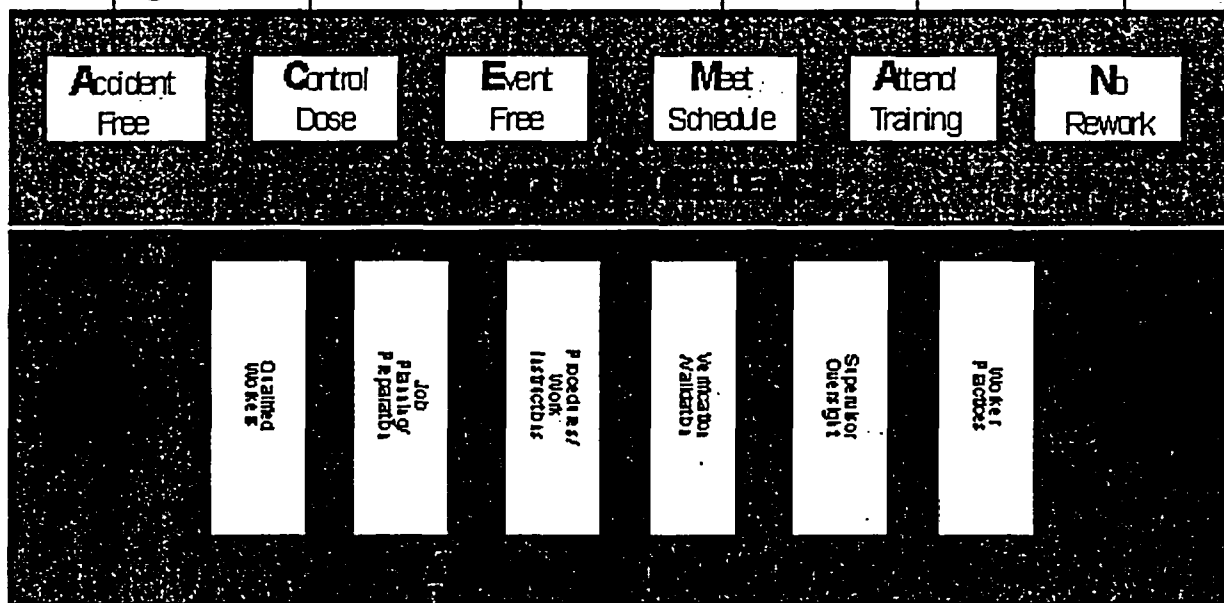
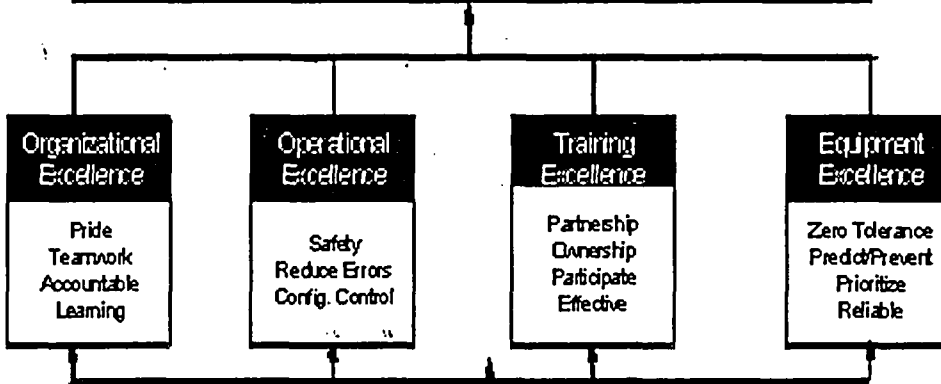


Safety + Innovation + Teamwork

PICTURE OF EXCELLENCE

POINT BEACH SITE EXCELLENCE

Safe, Reliable, and Cost Effective



<p>EP Team On Call: Team "D"</p>	<p>Plan-of-the-Day Meeting 0815-0845 Front Office Conference Room Work Week: B06B1 Date: Monday, April 26, 2004</p>	<p>U1R28: Day 23</p>
<p>Days Since Last HP Clock Reset: _____</p>		<p>Days to U2R27: 341</p>
		<p>Days to U1R29: 516</p>
		<p>Safety Event: _____ J-76</p>

Plan-of-the-Day Agenda

Purpose: Understand unit status + Ensure ownership and support + Recognize performance + Improve communications and teamwork

• Daily:

Plant Status – Units 1 and 2:

- A. [IHS] – Safety
- B. [Ops] – Plant Conditions (Units 1&2)
- C. [Ops] – Immediate attention (Pri 2)
- D. [Ops] – Operations' Dept concerns, activities, and priorities
- E. [Ops] – Status control events (last event)
- F. [Ops] – Regulatory notification / near misses
- G. [Ops] – TSACs (active & potential)
- H. [Ops] – Nuisance alarms
- I. [Ops] – Operations' Housekeeping Report
- J. [PA] – Operating Experience
- K. [Plt Mgr] – Communications

Surveillance Schedule Review:

- A. [PPG Mgr] – 12-week rolling schedule
- B. [PPG Mgr] – Equipment / system outages

Chemistry / RADCON Review, Units 1 and 2:

Integrated Schedule / System Outages:

- A. [Ops] – Operations' work week issues

Unit Outage (if applicable):

Administrative:

- A. [PPG Mgr] – Plant impact issues

Action Items:

Round Table:

Pagers:

- AOM.....
- Chemistry Shift Supervisor.....
- Industrial Safety
- Maintenance.....
- Outage Manager
- Radiation Protection
- Shift Manager.....
- System Engineering
- Work Week Manager

• Monday:

- A. [EP] – Event Response duty list
- B. [Ops/Eng] – Fire Protection summary
- C. [Safety] – Industrial safety action item list & safety performance
- D. [Site Engineering] – Maintenance Rule 'A1' system review
- E. [Project Mgmt] – Major project status
- F. [Business Mgr] – Budget overview
- G. Excellence Plan review

• Tuesday:

- A. [RP] – Annual dose summary
- B. [Security] – Security system status & compensatory measures
- C. [PPG] – Forced outage schedule
- D. [Site Eng] – Thermal cycle efficiency
- E. [VP/Director] – INPO follow up & readiness
- F. [EP] – EP issues
- G. Human Performance
- H. Excellence Plan review

• Wednesday:

- A. [Training] – Training
- B. [PPG] – Management Risk Observations
- C. [Ops] – Operator Workarounds
- D. [Ops] – Leakage list; oil & water
- E. [EP] – EP Drill Schedule
- F. [Engr] – Section XI equipment in double frequency
- G. [Maint] – Housekeeping issues
- H. Excellence Plan review

• Thursday:

- A. [EP] – EP Pager Test Results (as applicable)
- B. [Engr] – Temporary Modifications
- C. [Ops] – Control Room Panel Deficiency Analysis
- D. [Ops] – Disabled alarms (Units 1&2)
- E. [Ops] – Instruments Out-of-Service (Units 1&2)
- F. [PA] – CAP backlogs
- G. [Ops] – Out-of-Spec routine readings
- H. Excellence Plan review

• Friday:

- A. [Reg Affairs] – Upcoming Licensing/QA Reviews
- B. [QA] – Quality Assurance update
- C. [Maint] – WR Backlog
- D. Weekend coverage list (Units 1&2)
- E. [EP] – Event response "draft" for next week
- F. [Engr] – Predictive Monitoring
- G. [PPG Mgr] – Next week's work week summary and highlights
- H. [Reg Affairs] – NRC/INPO Perf Indicators
- I. Excellence Plan review

Point Beach Nuclear Plant Outage 1R28

DAY 21

Path



Picture

Meets



Doesn't Meet Exceeds

Supporting Operational Excellence

Outage Radiation Performance

Definition/Goal

This indicator measures cumulative dose radiation exposure and total number of personnel-contamination events (PCE's > 5000 cpm) during refueling outages. The dose indicator is measured in Rem and individual PCE events.

Meets:	<=75 Rem	Actual Cum.	
Exceeds:	<=71 Rem	Dose:	34.402 Rem
Meets: <= 18	Exceeds: <= 12	Actual PCE's:	6

Responsible Manager/Owner

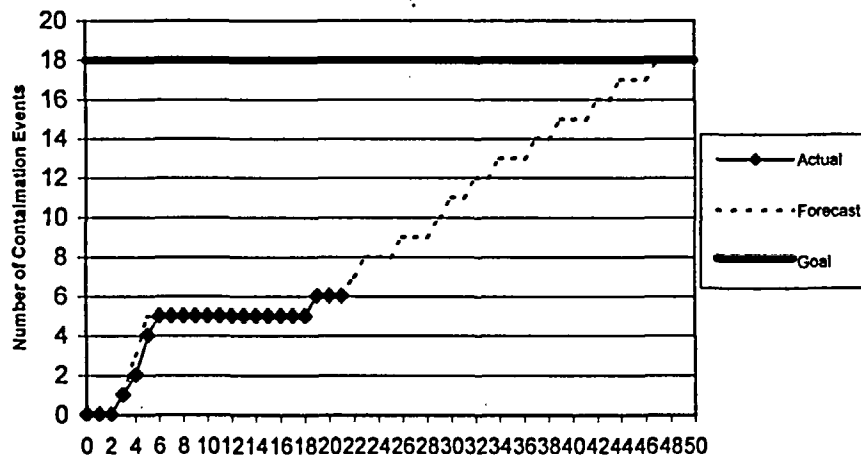
Stu Thomas

Analysis and Actions

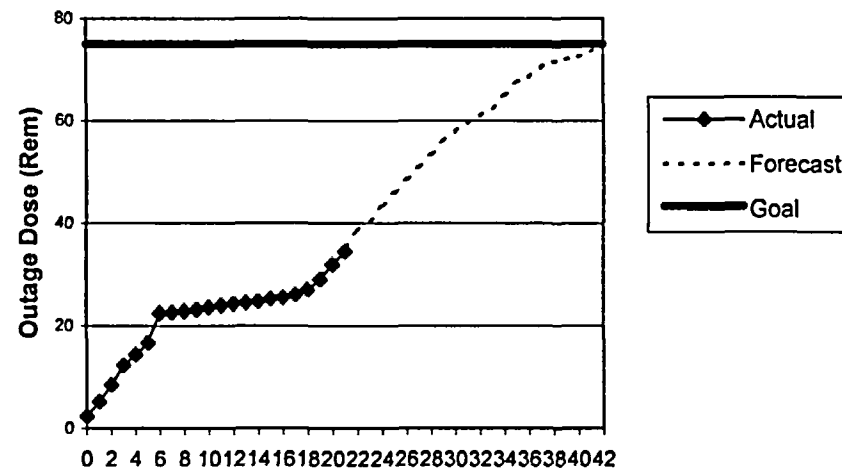
Day 21 - April 24
 Actual = 2.568
 Cumulative = 34.402
 Cumulative Forecast = 35.488

Daily dose and PCE goals reforecasted on 4/23.

Personnel Contamination Events



Cummulative Dose Exposure



NUCLEAR POWER BUSINESS UNIT

PBNP DAILY CHEMISTRY STATUS REPORT

Date: 04/26/04

Time: 5:00

PARAMETER	UNIT 1		UNIT 2		ACTION LEVEL(S)	
REACTOR COOLANT						
Boron, ppm	3005		1265		N/A	
Lithium, ppm	<0.05		2.47		out of range	
Chloride, ppb	<5		<5		> 50	
Fluoride, ppb	<5		<5		> 50	
Sulfate, ppb	19		<5		> 50	
Silica, ppb	860		414		> 1000 at power	
Dissolved H2, cc/kg	N/A		34.4		< 25, > 50	
Specific Activity, uCi/cc	N/A		1.43E+0		>100 / E-Bar	
100/E-Bar, uCi/cc	N/A		164.4			
I-131 DE, uCi/cc	N/A		2.19E-4			
RWST						
Boron, ppm	2977		3063			
SiO2, ppb	4140		5375			
BDEB (last done dates)	4/14/04 6:00		4/11/04 2:17			
% Solids	4.2		1.13			
% Boric Acid	4.4		2.8			
BAST	A	% Acid -- Date & Time		3.70	4/23/04 10:05	
	B	% Acid -- Date & Time		3.75	4/23/04 14:17	
	C	% Acid -- Date & Time		3.80	4/23/04 10:03	
STEAM GENERATORS	A	B	A	B	Action Level	INPO CPI
Chemistry Performance Index (CPI)	N/A		1.00		> 1.1 above 30% power (2)	
P/S Leak Rate, gpd	N/A		0		> 30 or > 60 gpd / hr	
Cation Cond(1), uS/cm	N/A	N/A	.058	.058	> 0.8	
Sodium, ppb	N/A	N/A	0.2	0.2	> 5	> 0.8
Chloride, ppb	N/A	N/A	0.4	0.3	> 10	> 1.6
Sulfate, ppb	N/A	N/A	0.4	0.4	> 10	> 1.7
pH	N/A	N/A	9.78	9.74	< 8.5	
FEEDWATER	UNIT 1		UNIT 2		Action Level	INPO CPI
Iron, ppb	N/A		2.483		> 3	> 5
Copper, ppb	N/A		0.030		> 0.1	> 0.2
Dissolved O2, ppb	N/A		< 5		> 5	
pH	N/A		9.67			
CONDENSATE					Action Level	
Dissolved O2, ppb	N/A		3.3		> 10	
SAE Flow (scfm)	N/A		3.2			

NOTE: Bolded items require action by Chemistry

(2) Best allowable CPI is 1.0

EMERGENT PROBLEMS / SIGNIFICANT ACTIVITIES / OTHER INFORMATION

Priority Chemistry equipment currently OOS



M^CCARDY IS GOING TO CHALLENGE THE ORGANIZATION TO DO THE 152642 PROJECT DURING THE OUTAGE

Plant Status Report

1X03005

Plant: Point Beach Nuclear Plant

1A03/A04 XTIE FROM UNIT 2
Date: Monday, April 26, 2004

Operations Report (Summary of Last 24 Hours of Operations):
Unit 1 is in refueling shutdown (Mode 6). Unit 2 is at 100% power.

2.3x Baseline Green
DISEC
FIREWATER PUMP

Days Without LTA: 583

Homeland Security Condition: Yellow

Unit 1				Unit 2			
PWR Mode	PWR Level	MWE (Gross)	MWE (Net)	PWR Mode	PWR Level	MWE (Gross)	MWE (Net)
6	0%	0	0	1	100%	542.9	520.8

Days On Line: 0 Days Since Last Reactor Trip: 284 Days On Line: 158 Days Since Last Reactor Trip: 290

Technical Specification Action Conditions

Item	Unit	Condition	Out of Service		Length (Hr/Days)	Tech Spec Number	Expires		Responsibility	Equip Expected RTS Date
			Date	Time			Date	Time		
2RC-508, U2C RMW Supply	2	Out of service.	11/9/03	0749	31 Days	3.6.3.A	4/26/04	1900	M. Rosseau	8/27/04

Major Equipment Out of Service or Degraded

Item	Unit	Condition	Date	Time	Work Order Number	Due Date	Responsibility
NONE							

Operational Problems / Concerns

Item	Unit	Condition	Actions Needed	Due Date	Responsibility
2RC-508, U2C Reactor Makeup Supply	2	Valve comes off shut seat momentarily when RMW pump starts.	Provide decision tree to Plant Manager.	4/30/04	K. Krause
Unit 2, Excess Letdown Flow	2	Inadequate excess letdown flow.	Open and inspect, 2CV-285.	5/7/04	N. Stuart
2RE-215, 2HX-46 Air Ejector Gas Monitor	2	Elevated indication, temperature related.	4 step action plan is developed. Scheduled completion is 5/14/04.	5/14/04	B. Carberry
2P-2A, Charging Pump	2	Excessive seal leakage/prevents continuous use of pump.	WO 0400329, Priority 3.	4/29/04	R. Brittingham

Aggregate Review of Issues

Item	Unit	Condition	Actions Planned	Due Date	Responsibility
NONE					

Reportable Events

NONE

Plant Status Report

Outstanding Operability Determinations
NONE
Protected Equipment
2P-29, Aux Feedwater Turbine-Driven Pump / P-38A/B Aux Feedwater Motor-Driven Pump / P-32A,B,C,D,E,F Service Water Pumps / K-2A/B Instrument Air Compressors / K-3A/B Service Air Compressors / G-01/G-02/G-03/G-04 Emergency Diesel Generators / Unit 1 Nozzle Dam Panels and Associated Equipment / 1P-15A Safety Injection Pump (New) / 1P-10A Residual Heat Removal Pump (New) / 1P-10A Residual Heat Removal Pump Breaker (New)
Load Changes (Planned or Unplanned)
NONE

Reactor Coolant System Leakage		
	Unit 1	Unit 2
Unidentified (gpm)	0 (No leak rate determined due to draindown)	0.04
Identified (gpm)	0	0.04
Major Tests and Evolutions Scheduled in Next 24 Hours		
Unit 1, IRMP 9056-4, calibrate 1B-04 480 VAC bus technical specification relays.		
345 KV Line 121 out of service until 05/02/04.		
1X-04, 13.8 KV – 4160 V transformer out of service.		



Outage Status Report

Plant: Point Beach Unit 1 Day: Monday Today's Date / Time: 4/26/04 0400

Outage Duration: Day 23 of Refueling Outage Number U1R28

Safety Status

Industrial - Within the last 12 hours

OSHA Recordables 0 First Aid cases 0 Significant near misses 0

Total for this outage 1

Summary:

Radiological

Dose to date 34.402

Projected to date * 35.488

Outage Goal ≤75 R

Difference -1.086

Number of PCEs 6

Summary: * Reforecast on 4/23

Nuclear

Significant human performance errors and events in last 24 hours 0

Summary:

Plant Status

Mode: Hot Standby (Mode 3) Hot Shutdown (Mode 4) Cold Shutdown (Mode 5) Refueling Shutdown (Mode 6)

RCS: Temperature: 77 Pressure: Vented to Atmosphere RV Level: Refueling Height

Time to Boil: 25 hours

Shutdown Safety Assessment Protected Equipment:

- Unit 1 A and B Steam Generator Nozzle Dams and Associated Equipment
- 1P-15A Safety Injection Pump
- 1P-10A RHR Pump
- 1B52-12A (1P-10A Motor Supply)

Major Activities Completed in Last 24 Hours

- B S/G Sludge Lancing

Critical Path and Near Critical Path Activities (Next 24 Hours)

- Spent Fuel Pool Bridge Repair
- Continue Fuel Motion
- A S/G Sludge Lancing
- Continue Reactor Vessel Head Inspection

Significant Outstanding Issues

Date	Issue	Due	Responsibility
4/03/04	Repair Blowdown Tank Leakage	4/30/04	Scott Manthei
4/04/04	1P2A Charging Pump Troubleshooting	4/30/04	Clay Hill
4/08/04	Incorporate Lessons Learned from 1 ST Reduced Inventory Orange Path	4/26/04	Dave Dyzak
4/22/04	1P-10B RHR Pump Return to Service Plan	4/26/04	Mike Boeselager
4/25/04	B RCP Motor Oil	TBD	Jim McGough
4/25/04	Spent Fuel Pool Bridge Repair	4/26/04	Dan Laing

Upcoming Major Milestones

	Scheduled		Actual			Scheduled		Actual	
	Date	Time	Date	Time		Date	Time	Date	Time
Cooldown <200°	4/03/04	2100	4/03/04	2230	Heatup >200°	4/25/04	0900		
Head Lift	4/09/04	0900	4/21/04	1550	Initial	4/28/04	1100		
Refueled	4/14/04	0300			On-Line	4/30/04	0100		

P O I N T B E A C H N U C L E A R P L A N T
 12 WEEK SURVEILLANCES - MANAGEMENT REPORT
 WITH SCHEDULED DATE AND TECH SPEC DUE DATE
 SORTED BY SCHEDULED DUE DATE
 WE4920.PBNP.TRENDING/PB0071.OPS.PROGRAMS(TSPECSU1)

05:53 Monday, April 26, 2004

SCHEDULED DUE DATE IS LESS THAN OR EQUAL TO 04/26/2004

UNIT	ST	WRK	ORD	EQUIP	ID	GRP	FRQ	CALLUP	DESCRIPTION	LAST	DUED	SKED	TS DUE	10%	25%	DEFER	ACT
PB1	40	0306530	CC-00779	MM	SW1	M-RELVLV		REPLACE RELIEF VAL			05/07/2003	05/19/2004		09/30/2003	05/06/2004	05/15/2004	128NS
PB0	74	0308970	DA-03055B	MM	8A1	M-RELVLV		REPLACE RELIEF VAL			02/13/2004	06/14/2004		11/27/2004	02/02/2006		C01A1
PB0	74	0308971	DA-03055C	MM	8A1	M-RELVLV		REPLACE RELIEF VAL			02/13/2004	06/14/2004		11/27/2004	02/02/2006		C01A1
PB0	74	0308972	DA-03055D	MM	8A1	M-RELVLV		REPLACE RELIEF VAL			02/13/2004	06/14/2004		11/27/2004	02/02/2006		C01A1
PB1	40	0214362	ICP-02.001	IC	CW1	PB1-1		RP AND SG ANALOG T	12/29/2003	03/22/2004			03/29/2004	03/31/2004	04/12/2004	05/03/2004	NO-PX
PB1	40	0214363	ICP-02.007	IC	CW1	PB1		POWER RANGE NIS TE	12/30/2003	03/23/2004			03/30/2004	04/01/2004	04/13/2004	05/03/2004	NO-PX
PB1	40	0214364	ICP-02.001	IC	CW1	PB1-2		RP AND SG ANALOG T	01/05/2004	03/24/2004			04/05/2004	04/02/2004	04/19/2004	05/03/2004	NO-PX
PB1	40	0214371	ICP-02.001	IC	CW1	PB1-3		RP AND SG ANALOG T	01/07/2004	03/29/2004			04/07/2004	04/07/2004	04/21/2004	05/03/2004	NO-PX
PB1	40	9950082	ICP-02.003	IC	8W1	PB1-2		RP LOGIC TEST - TR	02/03/2004	03/30/2004			04/03/2004	04/05/2004	04/13/2004	05/03/2004	NO-PX
PB1	40	0214375	ICP-02.001	IC	CW1	PB1-4		RP AND SG ANALOG T	01/07/2004	03/31/2004			04/07/2004	04/09/2004	04/21/2004	05/03/2004	NO-PX
PB1	76	0215117	A-01	APR	IM2	A-R-1		CALIBRATE 1A-01 TE	10/01/2002	04/01/2004	04/29/2004	04/02/2004	05/25/2004	08/17/2004			128EM
PB1	76	0215118	A-02	APR	IM2	A-R-1		CALIBRATE 1A-02 TE	10/01/2002	04/01/2004	05/03/2004	04/02/2004	05/25/2004	08/17/2004			128EM
PB1	76	0215122	A52-04	APR	IM2	A-R		UNDERFREQUENCY REL	10/07/2002	04/01/2004	04/29/2004	04/08/2004	05/25/2004	08/23/2004			128EM
PB1	76	0215123	A52-14	APR	IM2	A-R		UNDERFREQUENCY REL	10/07/2002	04/01/2004	05/07/2004	04/08/2004	05/25/2004	08/23/2004			128EM
PB1	76	0215120	B-03	APR	IM2	A-R-1		CALIBRATE 1B-03 TE	09/18/2002	04/01/2004	05/02/2004	03/20/2004	05/25/2004	08/04/2004			128EM
PB1	76	0215121	B-04	APR	IM2	A-R-1		CALIBRATE 1B-04 TE	10/06/2002	04/01/2004	04/25/2004	04/07/2004	05/25/2004	08/22/2004			128EM
PB1	76	0301896	CV	EPI	3A2	CV-1PT-1		VT-2 ASME XI PERIO	05/08/2001	04/01/2004	05/14/2004	05/07/2004	07/19/2004	02/04/2005			128EN
PB1	77	0301951	CV-00295	EPT	IM2	IST-001		IST-CHECK VALVE CL	09/20/2002	04/01/2004	04/29/2004	03/22/2004	05/25/2004	08/06/2004			128EN
PB1	77	0301953	CV-00304A	EPT	IM2	IST-001		IST-CHECK VALVE CL	09/22/2002	04/01/2004	04/29/2004	03/24/2004	05/25/2004	08/08/2004			128EN
PB1	77	0301954	CV-00304B	EPT	IM2	IST-001		IST-CHECK VALVE CL	09/26/2002	04/01/2004	05/02/2004	03/28/2004	05/25/2004	08/12/2004			128EN
PB1	77	0301955	CV-00383	EPT	IM2	IST-001		IST-CHECK VALVE CL	09/25/2002	04/01/2004	04/29/2004	03/27/2004	05/25/2004	08/11/2004			128EN
PB1	76	0216170	FIRE-BARRI	EM	IM2	E-M18		INSPECT AND MAINTA	10/04/2002	04/01/2004	05/07/2004	04/05/2004	05/25/2004	08/20/2004			128EM
PB0	76	0210963	G-01	EM	G01	E-A2		2 YEAR ELECTRICAL	06/15/2002	04/01/2004	06/15/2004		06/05/2004	09/10/2004			C01A1
PB0	76	0215148	G-01	EM	IM2	E-R		MONITOR EMERGENCY	09/17/2002	04/01/2004	04/06/2004	03/19/2004	05/25/2004	08/03/2004			128EM
PB0	40	0214235	G-01	MM	G01	M-A2		INSPECTION AND MAI	11/19/2001	04/01/2004			06/05/2004	02/15/2004	06/14/2004		NO-PX
PB0	76	0214236	G-01	MM	CA2	M-A2-1	GRP	GROUP B MECHANICAL		04/01/2004	06/13/2004		06/13/2005	04/01/2007			C01A1
PB0	76	0215149	G-02	EM	IM2	E-R		MONITOR EMERGENCY	09/17/2002	04/01/2004	04/05/2004	03/19/2004	05/25/2004	08/03/2004			128EM
PB1	76	0300803	ICP-02.008	IC	IM2	PB1-1		NI AXIAL OFFSET CA	11/08/2002	04/01/2004	05/17/2004	05/10/2004	05/25/2004	09/24/2004			128IC
PB1	76	0300804	ICP-02.008	IC	IM2	PB1-1		NI POWER RANGE OVE	10/21/2002	04/01/2004	05/18/2004	04/22/2004	05/25/2004	09/06/2004			128IC
PB1	76	0300805	ICP-02.009	IC	IM2	PB1-1		INTERMEDIATE RANGE	10/10/2002	04/01/2004	05/05/2004	04/11/2004	05/25/2004	08/26/2004			128IC
PB1	76	0300806	ICP-02.010	IC	IM2	PB1-1		SOURCE RANGE INSTR	10/11/2002	04/01/2004	05/05/2004	04/12/2004	05/25/2004	08/27/2004			128IC
PB1	76	0300807	ICP-02.015	IC	IM2	PB1-1		REACTOR PROTECTION	10/06/2002	04/01/2004	05/01/2004	04/07/2004	05/25/2004	08/22/2004			128IC
PB1	76	0300809	ICP-02.016	IC	IM2	PB1-2		OVERPRESSURE MITIG	09/29/2002	04/01/2004	04/27/2004	03/31/2004	05/25/2004	08/15/2004			128IC
PB1	76	0300810	ICP-02.017	IC	IM2	PB1-1		RP SYSTEM TRIP LOG	10/14/2002	04/01/2004	05/13/2004	04/15/2004	05/25/2004	08/30/2004			128IC
PB1	76	0300811	ICP-02.017	IC	IM2	PB1-1		RP SYSTEM AUTOMATI	10/06/2002	04/01/2004	05/05/2004	04/07/2004	05/25/2004	08/22/2004			128IC
PB1	76	0300812	ICP-02.018	IC	IM2	PB1-1		RX TRIP BKR AND TU	10/05/2002	04/01/2004	05/06/2004	04/06/2004	05/25/2004	08/21/2004			128IC

POINT BEACH NUCLEAR PLANT
 12 WEEK SURVEILLANCES - MANAGEMENT REPORT
 WITH SCHEDULED DATE AND TECH SPEC DUE DATE
 SORTED BY SCHEDULED DUE DATE

05:53 Monday, April 26, 2004 2

SCHEDULED DUE DATE IS LESS THAN OR EQUAL TO 04/26/2004

WE4920.PBNP.TRENDING/PB0071.OPS.PROGRAMS(TSPEC SU1)

UNIT	ST	WRK	ORD	EQUIP	ID	GRP	FRQ	CALLUP	DESCRIPTION	LAST	DUED	SKED	TSDUE	10%	25%	DEFER	ACT
PB1	76	0300813	ICP-02.019	IC	IM2	PB1	STARTU	SAFEGUARDS LOGIC	T	10/05/2002	04/01/2004	05/02/2004	04/06/2004	05/25/2004	08/21/2004		128IC
PB1	76	0300814	ICP-02.020	IC	IM2	PB1	BL	RP AND SG ANALOG	T	09/29/2002	04/01/2004	05/06/2004	03/31/2004	05/25/2004	08/15/2004		128IC
PB1	76	0300815	ICP-02.020	IC	IM2	PB1	RD	RP AND SG ANALOG	T	09/29/2002	04/01/2004	05/06/2004	03/31/2004	05/25/2004	08/15/2004		128IC
PB1	76	0300816	ICP-02.020	IC	IM2	PB1	WH	RP AND SG ANALOG	T	09/29/2002	04/01/2004	05/06/2004	03/31/2004	05/25/2004	08/15/2004		128IC
PB1	76	0300817	ICP-02.020	IC	IM2	PB1	YL	RP AND SG ANALOG	T	09/29/2002	04/01/2004	05/07/2004	03/31/2004	05/25/2004	08/15/2004		128IC
PB1	76	0300818	ICP-02.020	IC	IM2	PB1	1	RP AND SG ANALOG	T	10/14/2002	04/01/2004	05/14/2004	04/15/2004	05/25/2004	08/30/2004		128IC
PB1	76	0300819	ICP-02.020	IC	IM2	PB1	2	RP AND SG ANALOG	T	10/14/2002	04/01/2004	05/14/2004	04/15/2004	05/25/2004	08/30/2004		128IC
PB1	76	0300834	ICP-04.014	IC	IM2	PB1		BORIC ACID CONTROL		09/24/2002	04/01/2004	04/25/2004	03/26/2004	05/25/2004	08/10/2004		128IC
PB1	76	0300836	ICP-04.022	IC	IM2	PB1		CONTAINMENT SUMP	L	09/19/2002	04/01/2004	05/06/2004	03/21/2004	05/25/2004	08/05/2004		128IC
PB1	76	0300839	ICP-04.026	IC	IM2	PB1		NI POWER RANGE CHA		09/27/2002	04/01/2004	04/21/2004	03/29/2004	05/25/2004	08/13/2004		128IC
PB1	76	0300840	ICP-04.028	IC	IM2	PB1		IOPS AND CROSSOVER		10/04/2002	04/01/2004	04/29/2004	04/05/2004	05/25/2004	08/20/2004		128IC
PB1	76	0300841	ICP-04.029	IC	IM2	PB1		ICP 4.29-1 RPI INS		09/22/2002	04/01/2004	04/27/2004	03/24/2004	05/25/2004	08/08/2004		128IC
PB1	76	0300842	ICP-04.029	IC	IM2	PB1	1	ICP 4.29-2 OR -3 R		10/15/2002	04/01/2004	05/14/2004	04/16/2004	05/25/2004	08/31/2004		128IC
PB1	76	0300843	ICP-04.029	IC	IM2	PB1		ROD INSERTION LIM		10/08/2002	04/01/2004	04/29/2004	04/09/2004	05/25/2004	08/24/2004		128IC
PB1	76	0300844	ICP-04.034	IC	IM2	PB1		CONTAINMENT HYDROG		09/29/2002	04/01/2004	04/30/2004	03/31/2004	05/25/2004	08/15/2004		128IC
PB1	76	0300847	ICP-04.042	IC	IM2	PB1		STEAM GENERATOR WI		09/21/2002	04/01/2004	04/29/2004	03/23/2004	05/25/2004	08/07/2004		128IC
PB0	75	0208508	ICP-13.007	IC	GO1	G-01		G-01 DIESEL INSTRU		06/14/2002	04/01/2004	06/15/2004		06/05/2004	09/09/2004	06/20/2004	C01A1
PB1	76	0300896	ICP-13.015	IC	IM2	PB1		SV/AST RPS MATRIX		10/17/2002	04/01/2004	05/15/2004	04/18/2004	05/25/2004	09/02/2004		128IC
PB1	76	0214106	MS-02006	MMV	ZM2	M-R5		REMOVE/SHIP/REPLAC		11/12/1999	04/01/2004	04/08/2004	04/19/2004	09/10/2004	05/29/2005		128MM
PB1	76	0214107	MS-02012	MMV	ZM2	M-R5		REMOVE/SHIP/REPLAC			04/01/2004	04/06/2004		09/10/2004	05/11/2005		128MM
PB1	76	0214108	MS-02013	MMV	ZM2	M-R5		REMOVE/SHIP/REPLAC		11/12/1999	04/01/2004	04/07/2004	04/19/2004	09/10/2004	05/29/2005		128MM
PB1	77	0215885	O-IT-0001A	OP6	IM2	OT		IT-01A, HIGH HEAD		10/10/2002	04/01/2004	05/10/2004	04/11/2004	05/25/2004	08/26/2004	05/01/2004	128OP
PB1	77	0215886	O-IT-0003A	OP6	IM2	OT		IT-03A, RHR PUMP A		09/28/2002	04/01/2004	04/30/2004	03/30/2004	05/25/2004	08/14/2004		128OP
PB1	77	0215887	O-IT-0003B	OP6	IM2	OT		IT-03B, LOW HEAD S		10/11/2002	04/01/2004	03/29/2004	04/12/2004	05/25/2004	08/27/2004		128OP
PB1	77	0215888	O-IT-0003C	OP6	IM2	OT		IT-03C, HIGH HEAD		10/07/2002	04/01/2004	05/18/2004	04/08/2004	05/25/2004	08/23/2004		128NS
PB1	77	0215890	O-IT-0005B	OP6	IM2	OT		IT-05B, CONT SPRAY		10/07/2002	04/01/2004	05/06/2004	04/08/2004	05/25/2004	08/23/2004	05/01/2004	128OP
PB1	77	0215891	O-IT-0008C	OP6	IM2	OT		IT-08C, TDAFP MINI			04/01/2004	05/10/2004		05/25/2004	08/16/2004		128OP
PB1	77	0215892	O-IT-0090A	OP6	IM2	OT		IT-90A, UNIT 1 ATM		10/13/2002	04/01/2004	05/13/2004	04/14/2004	05/25/2004	08/29/2004		128OP
PB1	77	0215895	O-IT-0230	OP6	IM2	OT		IT-230, U1 CLASS 1		10/14/2002	04/01/2004	05/13/2004	04/15/2004	05/25/2004	08/30/2004		128OP
PB1	77	0215898	O-IT-0270	OP6	IM2	OT		IT-270, 1SW-2880 S		09/26/2002	04/01/2004	04/26/2004	03/28/2004	05/25/2004	08/12/2004		128OP
PB1	77	0215899	O-IT-0280A	OP6	IM2	OT		IT-280A, U1 MS STO		09/18/2002	04/01/2004	05/07/2004	03/20/2004	05/25/2004	08/04/2004		128OP
PB1	77	0215900	O-IT-0290	OP6	IM2	OT		IT-290.1, AFP DISC		10/12/2002	04/01/2004	05/10/2004	04/13/2004	05/25/2004	08/28/2004		128OP
PB1	70	0215901	O-IT-0290B	OP6	IM2	OT		IT-290B, 1P-29 AFP		10/14/2002	04/01/2004	05/12/2004	04/15/2004	05/25/2004	08/30/2004		128OP
PB1	70	0215902	O-IT-0290C	OP6	IM2	OT		IT-290C, COMPLETE		10/07/2002	04/01/2004	05/19/2004	04/08/2004	05/25/2004	08/23/2004		128NS
PB1	77	0215903	O-IT-0300	OP6	IM2	OT		IT-300, UNIT 1 MAI		10/07/2002	04/01/2004	04/26/2004	04/08/2004	05/25/2004	08/23/2004		128NS
PB1	77	0215906	O-IT-0300C	OP6	IM2	OT		IT-300C, UNIT 1 FE		10/04/2002	04/01/2004	05/06/2004	04/05/2004	05/25/2004	08/20/2004		128OP

6

}?

POINT BEACH NUCLEAR PLANT
 12 WEEK SURVEILLANCES - MANAGEMENT REPORT
 WITH SCHEDULED DATE AND TECH SPEC DUE DATE
 SORTED BY SCHEDULED DUE DATE
 WE4920.PBNP.TRENDING/PB0071.OPS.PROGRAMS(TSPECSU1)

05:53 Monday, April 26, 2004 3

SCHEDULED DUE DATE IS LESS THAN OR EQUAL TO04/26/2004

UNIT	ST	WRK	ORD	EQUIP	ID	GRP	FRQ	CALLUP	DESCRIPTION	LAST	DUED	SKED	YSDUE	10%	25%	DEFER	ACT
PB1	77	0215908	O-IT-0320	OP6	IM2	OT			IT-320, 1CV-371 AN	10/01/2002	04/01/2004	05/08/2004	04/02/2004	05/25/2004	08/17/2004.		1280P
PB1	77	0215909	O-IT-0320A	OP6	IM2	OT			IT-320A, RCP SEAL	09/17/2002	04/01/2004	04/26/2004	03/19/2004	05/25/2004	08/03/2004.		1280P
PB1	77	0215910	O-IT-0330	OP6	IM2	OT			IT-330, UNIT 1 CON	10/04/2002	04/01/2004	05/06/2004	04/05/2004	05/25/2004	08/20/2004.		1280P
PB1	70	0215912	O-IT-0510B	OP6	IM2	OT			IT-510B, U1 SI TES	10/06/2002	04/01/2004	05/03/2004	04/07/2004	05/25/2004	08/22/2004.		1280P
PB1	77	0215913	O-IT-0520B	OP6	IM2	OT			IT-520B, 1S1-896A/	10/01/2002	04/01/2004	05/06/2004	04/02/2004	05/25/2004	08/17/2004.		1280P
PB1	77	0215916	O-IT-0530C	OP6	IM2	OT			IT-530C, LRPM PROG	09/30/2002	04/01/2004	05/02/2004	04/01/2004	05/25/2004	08/16/2004.		1280P
PB1	77	0215917	O-IT-0530D	OP6	IM2	OT			IT-530D, LRPM PROG	09/30/2002	04/01/2004	05/02/2004	04/01/2004	05/25/2004	08/16/2004.		1280P
PB1	77	0215918	O-IT-0530E	OP6	IM2	OT			IT-530E, LRPM TEST	10/12/2002	04/01/2004	05/10/2004	04/13/2004	05/25/2004	08/28/2004.		1280P
PB1	77	0215919	O-IT-0531	OP6	IM2	OT			IT-531, U1 CONT SU	09/24/2002	04/01/2004	04/30/2004	03/26/2004	05/25/2004	08/10/2004.		1280P
PB1	77	0215920	O-IT-0540B	OP6	IM2	OT			IT-540B, LRPM PROG	10/07/2002	04/01/2004	05/17/2004	04/08/2004	05/25/2004	08/23/2004.		128NS
PB1	77	0215922	O-IT-0580	OP6	IM2	OT			IT-580, UNIT 1 PAS	09/29/2002	04/01/2004	05/06/2004	03/31/2004	05/25/2004	08/15/2004.		1280P
PB1	77	0215924	O-IT-0700	OP6	IM2	OT			IT-700, U1 REACTOR	10/10/2002	04/01/2004	04/26/2004	04/11/2004	05/25/2004	08/26/2004.		1280P
PB1	77	0215925	O-IT-0740	OP6	IM2	OT			IT-740, UNIT 1 MAI	10/08/2002	04/01/2004	05/09/2004	04/09/2004	05/25/2004	08/24/2004.		1280P
PB1	77	0215927	O-IT-0770	OP6	IM2	OT			IT-770, U1 SPRAY S	10/07/2002	04/01/2004	05/04/2004	04/08/2004	05/25/2004	08/23/2004.		1280P
PB1	77	0216004	O-TS-010.2	OP6	IM2	OT			TS-10, U1C PERSONN	10/12/2002	04/01/2004	05/10/2004	04/13/2004	05/25/2004	08/28/2004.		1280P
PB1	77	0216005	O-TS-030	OP6	IM2	OT			TS-30, U1 HIGH/LOW	10/13/2002	04/01/2004	05/10/2004	04/14/2004	05/25/2004	08/29/2004.		1280P
PB1	70	0216006	O-TS-035.2	OP6	IM2	OT			TS-35, UNIT 1 CONT	10/12/2002	04/01/2004	05/10/2004	04/13/2004	05/25/2004	08/28/2004.		1280P
PB1	77	0216007	O-TS-039	OP6	IM2	OT			TS-39, UNIT 1 MSIV	10/16/2002	04/01/2004	05/15/2004	04/17/2004	05/25/2004	09/01/2004.		1280P
PB1	77	0216008	O-TS-047	OP6	IM2	OT			TS-47, TEST OF EME	09/29/2002	04/01/2004	04/27/2004	03/31/2004	05/25/2004	08/15/2004.		1280P
PB1	76	0305079	PT-RCS-1	EPI	IM2	1-PT-RCS-1			RCS PRESSURE TEST	01/22/2003	04/01/2004	05/14/2004	07/24/2004	05/25/2004	12/08/2004.		128EN
PB1	76	0214137	RC-00434	MMV	3A2	M-R3			REMOVE AND SHIP VA		04/01/2004	04/09/2004		07/19/2004	12/30/2004.		128MM
PB1	40	0214138	RC-00434-L	MMV	IM2	M-R			HISTORY REVIEW AND	10/08/2002	04/01/2004	04/26/2004	04/09/2004	05/25/2004	08/24/2004.		128NS
PB1	76	0214139	RC-00435-L	MMV	IM2	M-R			HISTORY REVIEW AND	02/05/2002	04/01/2004	04/25/2004	08/08/2003	05/25/2004	12/23/2003.		128MM
PB1	77	0301878	RE-00126	HP	IM2	RMSCALAPR.			1RE-126/1RE-127/1R	09/28/2002	04/01/2004	04/29/2004	03/30/2004	05/25/2004	08/14/2004.		128RP
PB1	77	0213863	RESP 3.1	PRE	IM2	RE			PRIMARY SYSTEM TES	10/16/2002	04/01/2004	05/14/2004	04/17/2004	05/25/2004	09/01/2004.		128EN
PB1	77	0213864	RESP 4.1	PRE	IM2	RE			INITIAL CRITICALIT	10/16/2002	04/01/2004	05/15/2004	04/17/2004	05/25/2004	09/01/2004.		128EN
PB1	77	0213865	RESP 5.2	PRE	IM2	RE			RE TESTS DURING ES	10/29/2002	04/01/2004	05/15/2004	04/30/2004	05/25/2004	09/14/2004.		128EN
PB1	77	0213851	RESP 6.2	PRE	IM2	RE			VERIFY RCS FLOW RA	02/11/2003	04/01/2004	05/18/2004	08/13/2004	05/25/2004	12/28/2004.		128EN
PB1	76	0301901	RH	EPI	3A2	RH-1PT-2			VT-2 ASME XI PERIO	04/20/2001	04/01/2004	04/30/2004	04/19/2004	07/19/2004	01/17/2005.		128EN
PB1	76	0301904	SI	EPI	3A2	SI-1PT-2			VT-2 ASME XI PERIO	05/03/2001	04/01/2004	05/06/2004	05/02/2004	07/19/2004	01/30/2005.		128EN
PB1	76	0301905	SI	EPI	3A2	SI-1PT-6			VT-2 ASME XI PERIO	05/08/2001	04/01/2004	05/13/2004	05/07/2004	07/19/2004	02/04/2005.		128EN
PB1	76	0301986	SNUBBERS	EPT	IM2	M-R-1			VISUAL SNUBBER INS	10/05/2002	04/01/2004	04/08/2004	04/06/2004	05/25/2004	08/21/2004.		128EN
PB1	76	0214145	SNUBBERS	MM	IM2	M-R-3			INSPECT STEAM GENE	10/13/2002	04/01/2004	05/14/2004	04/14/2004	05/25/2004	08/29/2004.		128MM
PB1	60	0301907	U1-CONTAIN	EPI	IM2	CG-COREINS			VISUAL/ULTRASONIC	10/02/2002	04/01/2004	04/18/2004	04/03/2004	05/25/2004	08/18/2004.		128NS
PB1	60	0301908	U1-CONTAIN	EPI	IM2	CG-KEYINSP			VISUAL INSPECTION	09/20/2002	04/01/2004	04/04/2004	03/22/2004	05/25/2004	08/06/2004.		128NS
PB1	77	0301909	U1-CONTAIN	EPI	IM2	CG-VT3GA			CONT INSPECTION IW	10/04/2002	04/01/2004	04/26/2004	04/05/2004	05/25/2004	08/20/2004.		128EN

POINT BEACH NUCLEAR PLANT
 12 WEEK SURVEILLANCES - MANAGEMENT REPORT
 WITH SCHEDULED DATE AND TECH SPEC DUE DATE
 SORTED BY SCHEDULED DUE DATE
 WE4920.PBNP.TRENDING/PB0071.OPS.PROGRAMS(TSPECU1)

05:53 Monday, April 26, 2004 4

SCHEDULED DUE DATE IS LESS THAN OR EQUAL TO04/26/2004


UNIT	ST	WRK	ORD	EQUIP	ID	GRP	FRQ	CALLUP	DESCRIPTION	LAST	DUED	SKED	TSDUE	10%	25%	DEFER	ACT
PB1	77	0301910	U1	CONTAIN	EPI	IM2	M-A		INSPECT CONTAINMEN	10/04/2002	04/01/2004	04/29/2004	04/05/2004	05/25/2004	08/20/2004.		128EN
PB1	76	0306921	1ICP-02.02	IC	IM2	PB1	STARTU		POWER RANGE NIS TE	07/17/2003	04/01/2004	04/30/2004	01/16/2005	05/25/2004	05/22/2005.		128IC
PB1	76	0300960	1ICP-04.00	IC	IM2	PB1			PZR AND PZR RELIEF	09/24/2002	04/01/2004	04/26/2004	03/26/2004	05/25/2004	08/10/2004.		128IC
PB1	76	0300961	1ICP-04.00	IC	IM2	PB1			STEAM GENERATOR LE	09/24/2002	04/01/2004	04/29/2004	03/26/2004	05/25/2004	08/10/2004.		128IC
PB1	76	0300963	1ICP-04.00	IC	IM2	PB1			AUX FEEDWATER FLOW	09/27/2002	04/01/2004	04/28/2004	03/29/2004	05/25/2004	08/13/2004.		128IC
PB1	76	0300972	1ICP-04.01	IC	IM2	PB1			FIRST STAGE PRESSU	09/27/2002	04/01/2004	04/23/2004	03/29/2004	05/25/2004	08/13/2004.		128IC
PB1	76	0300973	1ICP-04.02	IC	IM2	PB1			REACTOR VESSEL LEV	09/24/2002	04/01/2004	04/29/2004	03/26/2004	05/25/2004	08/10/2004.		128IC
PB1	76	0300974	1ICP-04.03	IC	IM2	PB1			AFW/CHARGING FLOW	10/07/2002	04/01/2004	04/28/2004	04/08/2004	05/25/2004	08/23/2004.		128IC
PB1	76	0300975	1ICP-04.03	IC	IM2	PB1			CONT HIGH RANGE RM	09/27/2002	04/01/2004	04/28/2004	03/29/2004	05/25/2004	08/13/2004.		128IC
PB1	76	0300976	1ICP-04.03	IC	IM2	PB1			TURBINE VALVE CALI	10/06/2002	04/01/2004	05/02/2004	04/07/2004	05/25/2004	08/22/2004.		128IC
PB1	76	0215240	162-A	EM	IM2	E-R			1MS-2019 AND 1MS-2	09/25/2002	04/01/2004	05/07/2004	03/27/2004	05/25/2004	08/11/2004.		128EM
PB1	76	0215246	62/A01	EM	IM2	E-R			CALIBRATE AND TEST	10/03/2002	04/01/2004	04/27/2004	04/04/2004	05/25/2004	08/19/2004.		128EM
PB1	76	0301678	62/A01	EM	TM2	E-R7			SEVENTH YEAR UV BU		04/01/2004	04/28/2004		12/30/2004	02/14/2006.		128EM
PB1	71	0215247	62/A02	EM	IM2	E-R			CALIBRATE AND TEST	10/01/2002	04/01/2004	05/06/2004	04/02/2004	05/25/2004	08/17/2004.		128EM
PB1	71	0301677	62/A02	EM	TM2	E-R7			SEVENTH YEAR UV BU		04/01/2004	05/07/2004		12/30/2004	02/14/2006.		128EM
PB1	60	0308967	SI-00840B	MM	6A1	M-RELVLV			REPLACE RELIEF VAL		04/10/2004	10/01/2005		11/12/2004	10/02/2005.10/01/2005		H09A1
PB1	77	0215777	TS-PAM-001	OP1	4W1	OT			MISCELLANEOUS EQUI	03/13/2004	04/10/2004	05/12/2004	04/13/2004	04/13/2004	04/17/2004.		B03A2
PB1	77	0215811	TS-CONT-00	OP1	1M2	OT			CONT ISOL VALVE AN	03/12/2004	04/12/2004	04/26/2004	04/12/2004	04/15/2004	04/18/2004.		B04B2
PB1	77	0215852	O-TS-003A	OP3	4W1	OT			TS-3A, UNIT 1 TURB	03/20/2004	04/17/2004	05/16/2004	04/20/2004	04/20/2004	04/24/2004.		1280P
PB1	77	0300401	CHEM-SAMPL	CH	1W1	RCS BORON			RCS BORON SR 3.9.1	04/17/2004	04/19/2004	04/18/2004	04/24/2004	04/19/2004	04/25/2004.		B05A1
PB1	77	0300358	CHEM-SAMPL	CH	1W1	RCS CL			RCS CL TSR 3.4.5.2	04/17/2004	04/19/2004	04/18/2004	04/24/2004	04/19/2004	04/25/2004.		B05A1
PB1	77	0300371	CHEM-SAMPL	CH	1W1	RCS DO			RCS DO TSR 3.4.5.1	04/17/2004	04/19/2004	04/18/2004	04/24/2004	04/19/2004	04/25/2004.		B05A1
PB1	77	0215802	O-TS-033	OP1	4W1	OT			TS-33, UIC ACCIDEN	03/23/2004	04/20/2004	04/25/2004	04/23/2004	04/23/2004	04/27/2004.		1280P
PB1	76	0300396	CHEM-SAMPL	CH		ACCUM.UNIT			UNIT 1 SI ACCUMULA		04/22/2004	04/22/2004		04/25/2004	04/29/2004.		B05A1
PB1	40	9950079	ICP-02.003	IC	8W1	PB1-1			RP LOGIC TEST - TR	02/26/2004	04/22/2004	04/25/2004	04/26/2004	04/28/2004	05/06/2004.		128NS
PB1	40	0300735	ICP-02.005	IC	8W1	PB1-1			SG LOGIC TEST - TR	02/26/2004	04/22/2004	04/25/2004	04/26/2004	04/28/2004	05/06/2004.		128NS
PB0	77	0215479	O-IT-0011	OP2	CW1	OT			IT-11, P-12A/B SPE	01/30/2004	04/23/2004	04/29/2004	04/30/2004	05/02/2004	05/14/2004.		B05A1
PB0	77	0215638	O-IT-0014	OP3	CW1	OT			IT-14, FO TRANSFER	02/01/2004	04/25/2004	04/25/2004	05/02/2004	05/04/2004	05/16/2004.		B06B1
PB0	77	0215640	O-IT-0100	OP3	CW1	OT			IT-100, SEAT LKG T	02/01/2004	04/25/2004	04/25/2004	05/02/2004	05/04/2004	05/16/2004.		B06B1
PB1	77	0215848	TS-CCW-001	OP3	1M2	OT			CC SYSTEM VALVE PO	03/25/2004	04/25/2004	04/25/2004	04/25/2004	04/28/2004	05/01/2004.		B06B1
PB1	76	0304504	AF	IC		PB1			FT-4036/FT-4037 LO		04/26/2004	04/26/2004		04/29/2004	05/03/2004.		B06B1
PB2	76	0304490	AF	IC		PB2			FT-4036/FT-4037 LO		04/26/2004	04/26/2004		04/29/2004	05/03/2004.		B06B1
PB0	77	0300196	CHEM-SAMPL	CH	1W1	BAST BORON			BAST BORON TSR 3.5	04/23/2004	04/26/2004	04/26/2004	04/30/2004	04/26/2004	05/01/2004.		B06B1
PB1	77	0300402	CHEM-SAMPL	CH		RCS BORON			RCS BORON SR 3.9.1		04/26/2004	04/25/2004		04/26/2004	04/27/2004.		B06B1
PB2	77	0300482	CHEM-SAMPL	CH	1W1	RCS BORON			RCS BORON SR 3.9.1	04/22/2004	04/26/2004	04/26/2004	04/29/2004	04/26/2004	04/30/2004.		128NS
PB1	77	0300359	CHEM-SAMPL	CH		RCS CL			RCS CL TSR 3.4.5.2		04/26/2004	04/25/2004		04/26/2004	04/27/2004.		B06B1

POINT BEACH NUCLEAR PLANT
 12 WEEK SURVEILLANCES - MANAGEMENT REPORT
 WITH SCHEDULED DATE AND TECH SPEC DUE DATE
 SORTED BY SCHEDULED DUE DATE
 WE4920.PBNP.TRENDING/PB0071.OPS.PROGRAMS(TSPECSU1)

05:53 Monday, April 26, 2004 5

SCHEDULED DUE DATE IS LESS THAN OR EQUAL TO 04/26/2004

UNIT	ST	WRK	ORD	EQUIP	ID	GRP	FRQ	CALLUP	DESCRIPTION	LAST	DUED	SKED	TSDUE	10%	25%	DEFER	ACT
PB2	77	0300499	CHEM-SAMPL	CH	1W1	RCS	CL	RCS CL	TSR 3.4.5.2	04/23/2004	04/26/2004	04/26/2004	04/30/2004	04/26/2004	05/01/2004.		B06B1
PB1	77	0300372	CHEM-SAMPL	CH		RCS	DO	RCS DO	TSR 3.4.5.1		04/26/2004	04/25/2004		04/26/2004	04/27/2004.		B06B1
PB2	77	0300512	CHEM-SAMPL	CH	1W1	RCS	DO	RCS DO	TSR 3.4.5.1	04/23/2004	04/26/2004	04/26/2004	04/30/2004	04/26/2004	05/01/2004.		B06B1
PB1	77	0300415	CHEM-SAMPL	CH	1W1	RCS	FLUORI	RCS FL	TSR 3.4.5.3	04/19/2004	04/26/2004	04/26/2004	04/26/2004	04/26/2004	04/27/2004.		B06B1
PB2	77	0300538	CHEM-SAMPL	CH	1W1	RCS	FLUORI	RCS FL	TSR 3.4.5.3	04/18/2004	04/26/2004	04/26/2004	04/25/2004	04/26/2004	04/26/2004.		B06B1
PB1	77	0300428	CHEM-SAMPL	CH	1W1	RCS	SPEC A	RCS GROSS ACTIVITY		04/19/2004	04/26/2004	04/26/2004	04/26/2004	04/26/2004	04/27/2004.		B06B1
PB1	77	0300441	CHEM-SAMPL	CH	1W1	RE-229		RE-229 ISOTOPIC		04/19/2004	04/26/2004	04/26/2004	04/26/2004	04/26/2004	04/27/2004.		B06B1
PB2	77	0300551	CHEM-SAMPL	CH	1W1	RE-229		RE-229 ISOTOPIC		04/22/2004	04/26/2004	04/26/2004	04/29/2004	04/26/2004	04/30/2004.		B06B1
PB1	77	0300386	CHEM-SAMPL	CH	1W1	SGBDFO		SGBDFO GAMMA SCAN		04/19/2004	04/26/2004	04/26/2004	04/26/2004	04/26/2004	04/27/2004.		B06B1
PB2	77	0300525	CHEM-SAMPL	CH	1W1	SGBDFO		SGBDFO GAMMA SCAN		04/23/2004	04/26/2004	04/26/2004	04/30/2004	04/26/2004	05/01/2004.		B06B1
PB0	76	0305336	D-600		EM	CW1	E-M3	QUARTERLY DIESEL F		02/04/2004	04/26/2004	04/26/2004	05/05/2004	05/05/2004	05/19/2004.		B06B1
PB1	77	0215838	O-TS-032		OP2	4W1	OT	TS-32, MISCELLANEO		03/29/2004	04/26/2004	04/26/2004	04/29/2004	04/29/2004	05/03/2004.		B06B1
PB2	77	0216117	O-TS-032		OP2	4W1	OT	TS-32, MISCELLANEO		03/29/2004	04/26/2004	04/26/2004	04/29/2004	04/29/2004	05/03/2004.		B06B1
PB0	77	0215513	PT-FP-002		OP2	4W1	OT	DIESEL ENGINE-DRIV		03/29/2004	04/26/2004	04/26/2004	04/29/2004	04/29/2004	05/03/2004.		B06B1

U	ACT ID	WO ST	GRP	HPE RISK	EQUIPMENT	Activity Description	Cal ID	DUR	START	FINISH	APR							MAY							
											24	Sun 25	Mon 26	Tue 27	Wed 28	Thu 29	Fri 30	Sat 1	Sun 2	Mo 3					
ELECTRICAL MAINTENANCE												<input checked="" type="checkbox"/> STEAM GENERATOR FEED PUMP MOTOR 0312035 - 128EM <input type="checkbox"/> 125V DC STATION BATTERY 0305165 - B06B1 <input type="checkbox"/> 125V DC STATION BATTERY 0305168 - B06B1 <input type="checkbox"/> STEAM GENERATOR FEED PUMP MOTOR 0312035 - 128EM  REACTOR VESSEL AND ASSEMBLY 0216638 - 128EM <input type="checkbox"/> RPI SYSTEM MULTI AND/OR NON-NUMBERED EQUIPMENT 0215213 - 128EM <input type="checkbox"/> REACTOR VESSEL AND ASSEMBLY 0215214 - 128EM <input type="checkbox"/> TG-01 TURBINE GENERATOR EXCITER 0216167 - 128EM <input type="checkbox"/> STEAM GENERATOR FEED PUMP MOTOR 0312035 - 128EM <input type="checkbox"/> CONTAINMENT REACTOR CAVITY COOLING FAN MOTOR 0215225 - 128EM <input type="checkbox"/> CONTAINMENT REACTOR CAVITY COOLING FAN MOTOR 0215226 - 128EM													
1	EM-BMFP-01	76	EM	DR-Y ML-Y ORT3-N R-M	P-028B-M	P28B REMOVE OIL LINES AND MOTOR COVERS	8	2	25APR04 08:00A	25APR04 13:59															
1	EM0305165	76	EM	DR-N ML-N ORT3-N R-M	D-205	UNIT 1 MONTHLY NON-SAFETY 125V DC	U	4	26APR04 00:00*	26APR04 03:59															
1	EM0305168	76	EM	DR-N ML-N ORT3-N R-M	D-205	UNIT 1 QUARTERLY NON-SAFETY 125V DC	U	4	26APR04 00:00*	26APR04 03:59															
1	EM-BMFP-02	76	EM	DR-Y ML-Y ORT3-N R-M	P-028B-M	P28B INSTALL MOTOR RIGGING EQUIPMENT	8	4	26APR04 13:00	26APR04 16:59															
1	EM0216638	40	EM	DR-N ML-N ORT3-N R-M	P-001B-M	PERFORM REPAIRS FOR P-1B HIGH BREAKAWAY	U	140	26APR04 19:00	03MAY04 02:59															
1	EM-8480I	76	EM	DR-N ML-N ORT3-N R-M	RPI	AT HEAD RPI COIL RESISTANCE/INDUCTANCE	U	10	26APR04 20:00*	27APR04 05:59															
1	EM-8480J	76	EM	DR-N ML-N ORT3-N R-M	R-1	AT HEAD CRDM COIL RESISTANCE/INDUCTANCE	U	10	26APR04 20:00*	27APR04 05:59															
1	EM0216167	76	EM	DR-N ML-N ORT3-N R-M	E-01	INSPECT AND MAINTAIN EXCITER FUSES PER MWP	9	10	26APR04 20:00*	27APR04 20:59															
1	EM-BMFP-03	76	EM	DR-Y ML-Y ORT3-N R-M	P-028B-M	P28B REMOVE MOTOR TOP COVER	8	4	27APR04 08:00	27APR04 11:59															
1	EM0215225	76	EM	DR-N ML-N ORT3-N R-M	W-004A-M	PERFORM MCE W-004A-M (1B52-317M/1B-31)	U	4	27APR04 09:00*	27APR04 12:59															
1	EM0215226	76	EM	DR-N ML-N ORT3-N R-M	W-004B-M	PERFORM MCE W-004B-M (1B52-318M/1B-31)	U	4	27APR04 13:00	27APR04 16:59															
I&C MAINTENANCE												<input type="checkbox"/> T-34B SI ACCUMULATOR LEVEL TRANSMITTER 0407898 - 128IC													
2	IC0407898	76	IC	DR-Y ML-Y ORT3-Y R-M	LT-00935	LT-934/935 LEVEL DEVIATION	1	5	25APR04 08:00A	25APR04 16:59															
I&C - M. KENNETT & R. YOUNG												<input checked="" type="checkbox"/> OVERPRESSURIZATION MITIGATING SYSTEM 0300809 - 128IC													
1	IC2.16SUP	76	IC5	DR-N ML-Y ORT3-Y R-M	ICP-02.016	ICP 2.16 OVERPRESSURE MITIGATION BISTABLE CHK	U	2	27APR04 05:00*	27APR04 07:59															
MECHANICAL MAINTENANCE MM1 RIDINGS/ BRITTINGHAM												<input checked="" type="checkbox"/> REACTOR VESSEL AND ASSEMBLY 0214134 - 128MM													
1	MM-8480Q	76	MM1	DR-Y ML-Y ORT3-Y R-H	R-1	CLEAN REACTOR HEAD STUDS	U	40	24APR04 11:00A	27APR04 07:59															
MECHANICAL MAINTENANCE- RIDINGS/BRITT (RCP "B")												<input checked="" type="checkbox"/> REACTOR COOLANT PUMP 0214119 - 128MM													
1	MM-8485	76	MM3	DR-N ML-N ORT3-N R-M	P-001B	P-1B, INSPECT / MAINTAIN SEAL RMP 9002-5	5	44	24APR04 11:00A	29APR04 11:59															
MECHANICAL VALVE, VANDERVELDE/KENNEY												<input type="checkbox"/> AUXILIARY CHARGING LINE ISOLATION 0216627 - 128MM													
1	MM0216627	76	MMV	DR-N ML-N ORT3-N R-M	CV-01296	CV-1296 - INSTALL NEW TRIM PER MOD 02-027	5	40	26APR04 06:00	29APR04 12:59															
OPERATIONS DAYSHIFT												<input checked="" type="checkbox"/> G-03 EMERGENCY DIESEL GENERATOR MONTHLY 0215508 - B06B1													
0	OP0215508	77	OP2	DR-N ML-N ORT3-N R-M	O-TS-083	TS-83, G-03 EMERGENCY DIESEL	2	1	25APR04 09:00A	25APR04 12:59															

Early Bar
 Progress Bar
 Critical Activity

NMC / WE
PBNP U1 Refueling 28 Outage

LT-81 HUMAN ERROR RISK BARCHART
FL-81 HUMAN ERROR POTENTIAL

Work Activity Risk Assignment

U	ACT ID	WO ST	GRP	HPE RISK	EQUIPMENT	Activity Description	Cal ID	DUR	START	FINISH	APR							MAY																											
											24	Sun 25	Mon 26	Tue 27	Wed 28	Thu 29	Fri 30	Sat 1	Sun 2	Mo																									
OPERATIONS SWINGSHIFT																																													
0	OP0215638	77	OP3	DR-N ML-N ORT3-N R-M	O-IT-0014.3	IT-14, FO TRANSFER SYSTEM PUMPS/	3	3	25APR04 16:00*	25APR04 18:59																																			
0	OP0215640	77	OP3	DR-N ML-N ORT3-N R-M	O-IT-0100.3	IT-100, SEAT LKG TEST OF DA-352 AND	3	3	25APR04 16:00*	25APR04 18:59																																			
OPERATIONS																																													
1	RP1C-030		OPS	DR-N ML-N ORT3-N R-M	O-RP-001C	FUEL MOTION AND INSERT SHUFFLE	1	92	25APR04 08:00A	29APR04 07:59																																			
1	SOP-CV-010		OPS	DR-N ML-N ORT3-N R-M	T-04	ISOLATE & DEPRESSURIZE THE VCT PER SOP-CV-002	U	8	25APR04 12:00	25APR04 20:59																																			
1	OI-164-B		OPS	DR-N ML-N ORT3-N R-M	T-008C	PREPARE C HUT FOR 1CV-257 REPLACEMENT	U	10	25APR04 21:00	26APR04 07:59																																			
1	SOP-CV-015		OPS	DR-N ML-N ORT3-N R-M	T-004	DRAIN LETDOWN PER SOP-CV-002 SECT 5.2	1	8	25APR04 21:00	26APR04 04:59																																			

G-03 EDG FUEL OIL TRANSFER SYSTEM PUMPS/VALVES
0215638 - B06B1

G-03 EDG SEAT LKG TEST OF DA COMP DISCH CHK VLVS
0215640 - B06B1

REFUELING

128OP

128OP

128OP

128OP

Fire Protection Update
4/26/2004

Inspections/Self Assessments

Inspection/Assessment	Dates
Fire Protection Self Assessment	May 17 through May 28, 2004
NRC Triennial Fire Protection Inspection	November 1 to November 19, 2004

Fire PRA

Progress on Fire PRA has been slow and is falling behind schedule. Loss of PRA engineer, Appendix R engineer and Program Supervisor has diverted personnel from this project. A formal project plan is being developed to include fleet resources to recover project.

Fire Operating Procedures.

Progress on Fire Operating procedures has also been slow and is falling behind schedule. Loss of the same personnel noted above, as well as a shortage of Operations procedure writers, has diverted personnel from this project. A formal project plan is being developed to include fleet resources to recover project.

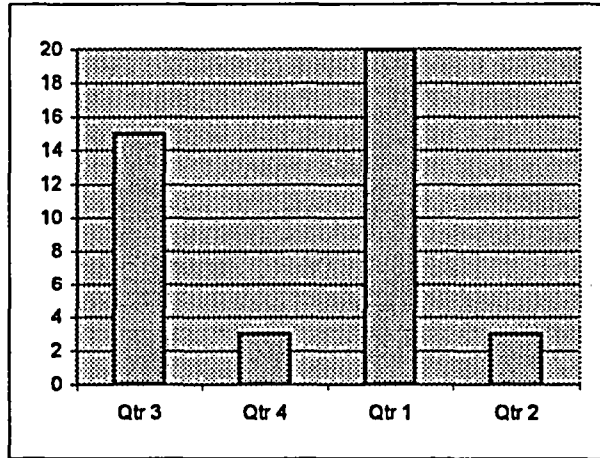
Immediate Focus

1. Hire PRA and Appendix R Engineers
2. Arrange for NMC resources, both internal and external to PBNP, to support the Fire Operating Procedure upgrade.
3. Develop and implement project plan to address shortcomings in Fire Operating Procedures.

Minor Injuries

WE/NMC

	Qtr 3	Qtr 4	Qtr 1	Qtr 2
Assessment	0	0	0	0
Chemistry	1	1	2	1
Communications	1	0	1	0
Engineering	0	0	1	0
Facilities	4	0	4	0
I H & S	0	0	0	0
I & C	0	0	0	0
License Renewal	0	0	1	0
Maintenance	2	0	5	1
NSS	0	0	1	0
Operations	3	2	3	1
Production Planning	0	0	0	0
Procedures	0	0	0	0
Nuclear Oversight	0	0	0	0
Rad Protection	1	0	0	0
Records	0	0	0	0
Reg Services	0	0	0	0
Training	3	0	2	0
Total WE/NMC	15	3	20	3

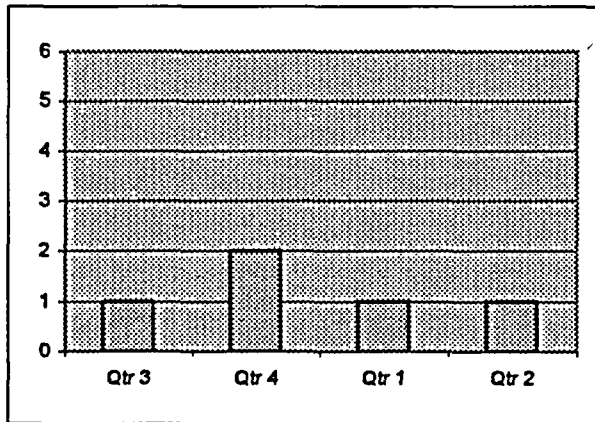


Total YTD 2004 23

Recordable Injuries

WE/NMC

	Qtr 3	Qtr 4	Qtr 1	Qtr 2
Assessment	0	0	0	0
Chemistry	0	0	0	0
Communications	0	0	0	0
Engineering	0	0	0	1
Facilities	0	0	0	0
I H & S	0	0	0	0
I & C	0	0	0	0
Maintenance	1	2	0	0
NSS	0	0	0	0
Operations	0	0	1	0
Production Planning	0	0	0	0
Procedures	0	0	0	0
Nuclear Oversight	0	0	0	0
Rad Protection	0	0	0	0
Records	0	0	0	0
Reg Services	0	0	0	0
Training	0	0	0	0
Total WE/NMC	1	2	1	1

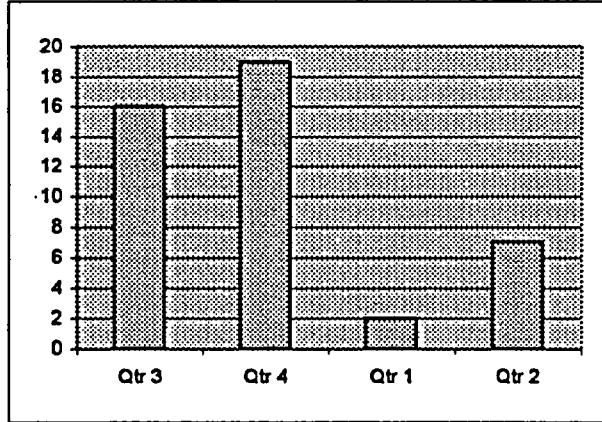


YTD 2004 1

Minor Injuries

Contractors

	Qtr 3	Qtr 4	Qtr 1	Qtr 2
AMES	0	4	0	0
Anatec	0	0	0	1
Bartlett Nuclear	0	0	0	2
Crane	0	0	0	0
DZNPS	8	4	1	0
Harvey Cement	1	0	0	0
LMT	0	1	1	1
NU Energy	1	0	0	0
Phillips-Getchow	0	0	0	0
TWC - Wackenhut	4	4	0	0
Van-Ert	0	0	0	0
Waterblaster	0	0	0	0
Westinghouse	2	10	0	3
Total Contractors	16	19	2	7



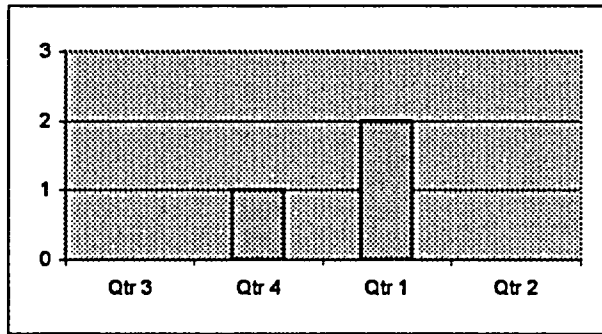
YTD 2004

7

Recordable Injuries

Contractors

	Qtr 3	Qtr 4	Qtr 1	Qtr 2
Bartlett Nuclear	0	0	0	0
Copy Machine	0	0	1	0
Crane	0	0	0	0
DZNPS	0	0	0	0
LMT	0	0	0	0
Phillips-Getchow	0	0	0	0
TWC - Wackenhut	0	0	1	0
Van-Ert	0	0	0	0
Waterblaster	0	0	0	0
Westinghouse	0	1	0	0
Total Contractors	0	1	2	0



YTD 2004

2

Based on injury reports submitted by 04/24/2004

Maintenance Rule (a)(1) System Status

MTN Rule a(1) System	Resp. Eng.	Reason a(1)	Status	When Expected to go a(2) (month/year)	(a)(1) Status Rating
CS	BDO/KJO	Exceeded criteria for 20% power derates. System made (a)(1) on 7/2/03 CAP033892	1P-028B and 1P-028A pumps to be inspected and gaskets replaced 2P-028B pump inspected and gasket replaced Discharge check valves to be inspected (1CS-0022A) Discharge check valve inspected (2CS-0017A) RCE 206 completed and action plan changed.	Jun-04	B
CV	MCO	Excessive Unavailability CR 00-3318/CAP000288 CR 00-3091/CAP000273 System made (a)(1) 10/26/00	All packing issue items are complete. Over speed trip on 2P-002C-M. Repetitive failure: need to replace potentiometer due to sensitivity. DC drive to be replaced. Potentiometer replacement delayed/cancelled due to obsolescence. Modification needed to resolve issue. Modification in design phase. Varidrive failures to be addressed by evaluating possible preventive maintenance tasks	1/30/2005 dependent on approval of installation budget after design	B
DG	DGP3/JCG	G01/G02 Starting air system problems and recurrent relay failures. CR 96-413/CAP001538 System made (a)(1) 02/26/96	Maintenance practices changed to address relay failures. Complete modification to G-01 starting air system from Carbon Steel to Stainless Steel, completed G-03 rewound or receive a take out inspection. NOT SCHEDULED. Replace G-01 bearing housing. 2nd quarter 2004 Actions to address G-02 vibration anomaly to be completed for G-01 and G-02 by Diesel Reliability project. Implementation currently antipated for December 2006. (a)(2) date dependent on progress of diesel reliability project	Dec-06	B

Note: Status Rating:

- A action plan to be developed
- B actions in progress
- C monitoring

Maintenance Rule (a)(1) System Status

MTN Rule a(1) System	Resp. Eng.	Reason a(1)	Status	When Expected to go a(2) (month/year)	(a)(1) Status Rating
GT	DCP3/JCG	Repetitive MPFF of exhaust manifold gasket leak. CAP 001899 System made (a)(1) 01/17/02	PM optimization plan developed Changes to be incorporated into procedures and implemented at next available maintenance opportunity Drip shields installed to prevent ice buildup	Mar-06	B
MRR	DEL1	Plant Trips Due to Relay Failures CR 01-1035/CAP013729/CAP002221 System made (a)(1) 03/30/01	Unit 2 REGEA relays were replaced during U2R26. MR 01-093	May-04	C
NI	MPP	Source Range functional failure and unavailability criteria exceeded. CAP032614 System made (a)(1) 5/2/03	Review detector installation practices Review detector assembly practices Review housings in stock Develop PM and trending tools Reevaluate Source Range Unavail criteria, completed	Jun-04	B
OS	BDO/KJO	Function failures for newly identified function of "Maintain condenser vacuum" exceed performance criteria. CAP028741 System made (a)(1) 7/15/2002	Mod required to correct problem with valves. completed Unit 1 completed One valve has failed recent tests, system will remain (a)(1) to resolve issue. Unit 2 installed during U2R26	Oct-04	B
RP	KDK1	Unavailability criteria exceeded due to failure and subsequent troubleshooting of Rod Stop Bistable CAP031347 System made (a)(1) 2/26/2003	Purchase recorder to allow better troubleshooting (I&C proposed changing instructions for the existing recorder)	Dec 04 Changes to the action plan to be presented to the expert panel	B
SA	BDM	Functional failures of the K-3B Service Air compressor exceeded criteria CAP054465 System made (a)(1) 3/3/2004	Action plan completed address failure caused by inadequate belt tension and failure of the total closure valve Change guidance for total closure valve reassembly. Stage dedicated oiler at the compressor. Complete ACE001658 for K-3B control switch not in auto following strainer cleaning.	Jul-05	B

Note: Status Rating:

- A action plan to be developed
- B actions in progress
- C monitoring

Maintenance Rule (a)(1) System Status

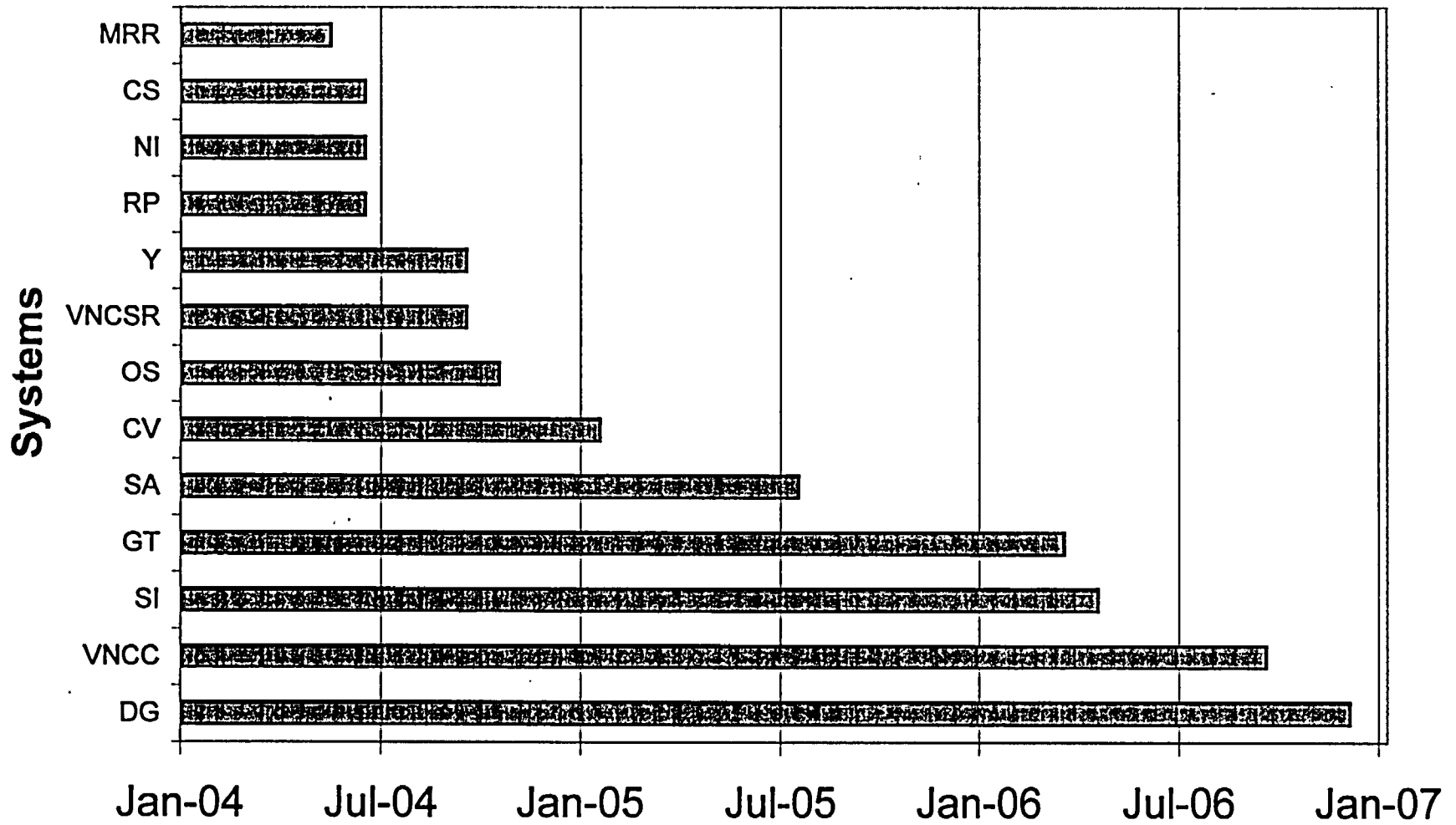
MTN Rule a(1) System	Resp. Eng.	Reason a(1)	Status	When Expected to go a(2) (month/year)	(a)(1) Status Rating
SI	SRB	Unavailability criteria exceeded during pump repair CAP002423 System made (a)(1) 03/06/02	PB1 leaking valves worked U1R27 MR 02-011*A high point vents installed U1R27 MR 02-012*B and MR 02-011*B excess flow check valves installation completed Repair of leaking PB1 valves. In the U1R28 outage: 0216334, 1SI-844A 0216335, 1SI-845A 0207002, 1SI-887 Removed from outage: 0216333, 1SI-839B	11/28/2004 4/2006 with U1R28 outage deletions	B
VNCC	MAM3	Functional Failure of backdraft damper CAP032252 4/15/2003	Replace backdraft dampers. SPEED is approved.	1/30/2006 Sept 2006 with U1R28 outage deletions	B
VNCSR	STM1	HX-38A1-3 (Chiller) unreliability CR 97-0652/CAP016924 System made (a)(1) 02/25/97	Replacement of HX-38A by MR 97-049. Completed March 2001. MG-6 relays replaced, system in monitoring	9/30/2004 Potential change to the action plan to be presented to the expert panel.	C
Y	HJS1	Unavailability exceeded due to loss of DY-0C while connected to the Unit 1 white instrument bus CR 01-2453/CAP000875 System made (a)(1) 07/27/01	Updating of RMP complete Periodic replacement of Elgar inverter circuit boards during next scheduled maintenance 8/03 through 8/04	Sep-04	B

Note: Status Rating:

- A action plan to be developed
- B actions in progress
- C monitoring

Mtn Rule projected (a)(2) dates

(see "Mtn Rule system (a)(1) status" spreadsheet)



Capital Projects Weekly Status
Week Ending 04/24/04

Project	Project Manager	Project Sponsor	Phase	Overall Project Status To-Date	Week's Performance				Comments
					Cost	Scope	Schedule	ACEMAN	
License Renewal	Newton	Schweitzer	Implementation	ME	UP	UP	UP	UP	Sufficiency report with audit and milestone schedule received
Bolted Fault	Hanneman	Petrowsky	Implementation	DME	Down	Up	Down	Down	Outage performance issues and schedule delays has caused increased cost due to having to reschedule contractors for warranty repairs of 1B42 bucket stabs at our expense. The 1B42 bracing work was removed from the outage schedule and then put back in, which increases overhead costs for oversight and engineering coverage. Schedule delays have made it difficult for MTN to assign electrician crews to work 1B42 bracing.
MET Tower	Hanneman		Not Funded						
Capacity Upgrade	Hanneman		On Hold						
Plant Perimeter Replacement	Massey	Fendl	Implementation	ME	UP	UP	UP	UP	Need qualified digger baaaad.
Appendix R Firewall	Morse	Petrowsky	Implementation	ME	UP	UP	UP	UP	
MEMCOR Water Treatment	Smith	Corell	Implementation	ME	UP	UP	UP	UP	
Reactor Vessel Head Replacement	Kuhn	Schweitzer	Design	ME	UP	UP	UP	UP	Released stop work order to MHI.
Crane Refurbishments	Morse	Brander	Design	DME	UP	UP	DOWN	DOWN	Engineering Manpower not available for Technical Review
D-105/D-106 Station Battery Replacement	Argue	Brander	Implementation	ME	UP	UP	DOWN	DOWN	Work packages not ready to work.
Elevator Upgrade	Facilities	Brander	Not Funded						
EDACS Replacement		S. Thomas	Not Funded						
Replace Charging Pump Motors	Sexton	Carter, T (Eng)	Design	ME	DOWN	UP	DOWN	DOWN	CAP being written on cost overrun.
GSI-191 Pwr Sump Blockage (Unit 1)	McNamara	Petrowsky							
GSI-191 Pwr Sump Blockage (Unit 2)	McNamara	Petrowsky							
G01/G02 Heat Exchanger Replacements	Sexton	Carter, T (Eng)	Design						
Security Order Project	Galler	Fendl	Study	DME	DOWN	UP	DOWN	DOWN	Budget not approved; scope revised to reduce budget proposal; Five Eng. Services proposals tech reviewed, final selection expected 4/23/04
CHAMPS Replacement	IT/PPG	Strharsky	Not Funded						
Blowdown Evaporator Replacement		Carter, T (Eng)	Not Funded						
Explosive Detector Replacement		Fendl	Not Funded						
Unit 1 Turbine Building Roof Replacement	Facilities	R. Arnold	Not Funded						
EDG G01/G02 Controls Upgrade	Sexton	Carter, T (Eng)	Not Funded						

Capital Projects Weekly Status
Week Ending 04/24/04

Emergency Diesel Generator Reliability	Sexton	Carter, T (Eng)	Not Funded						
Gamma-40 Portal Monitor									
North Warehouse		Schultz	Not Funded						
JPIC/EOF	Wilson	Wilson	Study	ME	UP	UP	UP	UP	
Revenue Quality Metering		Carter, T (Eng)	Not Funded						

DME = Doesn't Meet Expectations
ME = Meets Expectations
EE = Exceeds Expectations

23

O/M Projects Weekly Status
Week Ending 04/24/04

Project	Project Manager	Project Sponsor	Phase	Overall Project Status To-Date	Week's Performance				Comments
					Cost	Scope	Schedule	ACEMAN	
Engineering Calculations	Petrowsky	Petrowsky	Implementation	ME	UP	UP	UP	UP	Sufficiency report with audit and milestone schedule received
Split Pins	Smith	Schweitzer	Study	DME	UP	UP	UP	UP	Funding approved last week.
U1R28 BMI Inspection	Brown	Schweitzer	Implementation	EE	UP	UP	UP	UP	
U1R28 CRDM Inspection	Brown	Schweitzer	Implementation	ME	DOWN	DOWN	DOWN	DOWN	Outage delays have affected schedule.
AFW System Margin Recovery									

24

All Excellence Plan Commitment Action Steps Due Within 30 Days

Assessment	Track	Step Owner	Start Date	Due Date		
Assessment						
OP-10-011	Improve Effectiveness of Self Assessments					
OP-10-011.3.D	Perform an effectiveness review of site leadership observation programs.	CA028467	Purcell, J.	2/15/2004	5/15/2004	Commitment
OP-10-011.4.C	Perform benchmarking effectiveness review.	CA028465	Purcell, J.	4/15/2003	5/15/2004	Commitment
OP-10-011.5.F	Develop a process for site leadership review of completed self-assessments.	CA030635	Purcell, J.	1/12/2004	5/15/2004	Commitment
Total # of Items for Assessment						: 3
Business Procedures						
OR-01-004	Individual Behavioral Excellence					
OR-01-004.19	Begin review of department indicators at Management Review Meetings.	CA054880	Breene, T.	4/13/2004	5/7/2004	Commitment
Total # of Items for Business Procedures						: 1
Emergency Planning						
OP-09-004	Upgrade Emergency Action Levels (EALs)					
OP-09-004.8	PORC approval of EAL upgrade changes.	CA052689	Schwartz, P.	4/15/2004	5/21/2004	Commitment
Total # of Items for Emergency Planning						: 1
Engineering Design						
OP-14-001	Improve the Configuration Management Program					
OP-14-001.11	Implement fleet standards for modification closeout (Objective 2).	CA030747	Marean, J.		5/20/2004	Commitment
OP-14-001.12	Interim Effectiveness Review (EFR).	EFR030748	Holt, K.		5/20/2004	Commitment
Total # of Items for Engineering Design						: 2
Engineering Design Configuration Management (and Q-List Items)						
OP-14-007	Updated Vendor Technical Information Program (VTIP)					
OP-14-007.8	Review and address issues identified in the VTIP self-assessment and in CA000248, CA001634, and CA002968.	CA055685	Holt, K.	4/15/2004	5/20/2004	Commitment
Total # of Items for Engineering Design Configuration Management (and Q-List Items)						: 1
Engineering Processes						
OR-05-008	AFW Root Cause Evaluation (RCE) Corrective Actions					
OR-05-008.2	Develop an effectiveness review plan and schedule.	CA055859	Peterson, L.	4/15/2004	5/11/2004	Commitment
Total # of Items for Engineering Processes						: 1
Performance Assessment						
OR-01-004	Individual Behavioral Excellence					
OR-01-004.18	Begin Monthly group/department/site rollups with month of March.	CA054879	Hennessy, F.	4/1/2004	4/29/2004	Commitment

Point Beach CAP Activities

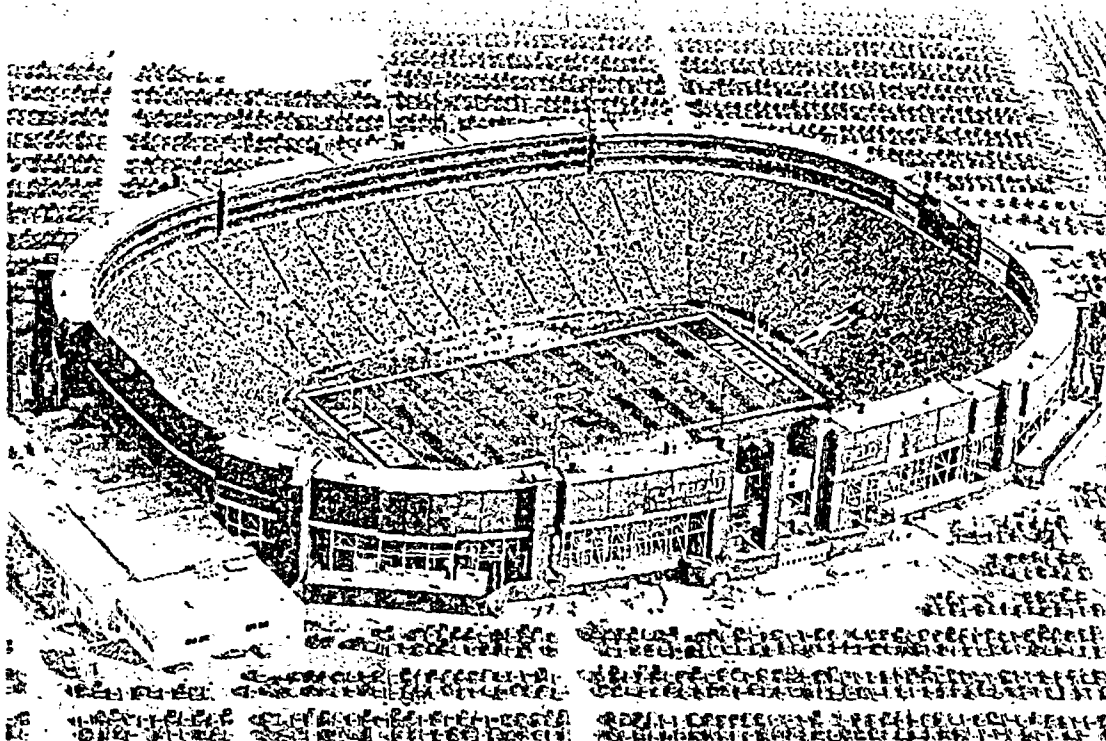
Delay of Game Clock

Monday, 04/26/2004

24 Days since last fumbled item

4 Days since last Unassigned item

(Last reset: NQP-PBNP QC -)



Plan of the Day Meeting

8:15 - 8:45 am

Front Office Conference Room

Committed to Nuclear
Excellence



"Do the job right the first time."

Plan of the Day Meeting Action Register

Short Term Actions (<7 days)

Responsible Department Manager will provide weekly updates at POD Meeting on Monday, Wednesday, and Friday.

Entry Date	Action Description	Due Date	Owner
4/20/04	Notify Pat Russell of the following: 1. date of last human performance team meeting; 2. date of next department human performance team meeting	4/23/04	All Managers
4/21/04	Develop recovery plans for PPG identified work-week items and deliver to Plant Manager.	4/23/04	Affected Managers
4/23/04	Ensure preparations for 4/26/04 press visit to site are complete and managers are aware of visit.	4/26/04	Sara Cassidy
4/23/04	PPG to complete scheduling of IHX-56A & IHX-56B steam generator feed pump cooler work and IHX-24 condensate cooler.	4/30/04	Jerry Strharsky
4/23/04	Discuss with all groups the Confirmatory Action Letter	4/30/04	All Managers
4/23/04	Review degraded (caution) NRC performance indicators and establish single point of accountability, with recovery plans	4/30/04	Jim Connolly

Long Term Actions (>7 days)

Responsible Department Manager will provide weekly updates at POD Meeting on Friday.

Entry Date	Action Description	Due Date	Owner