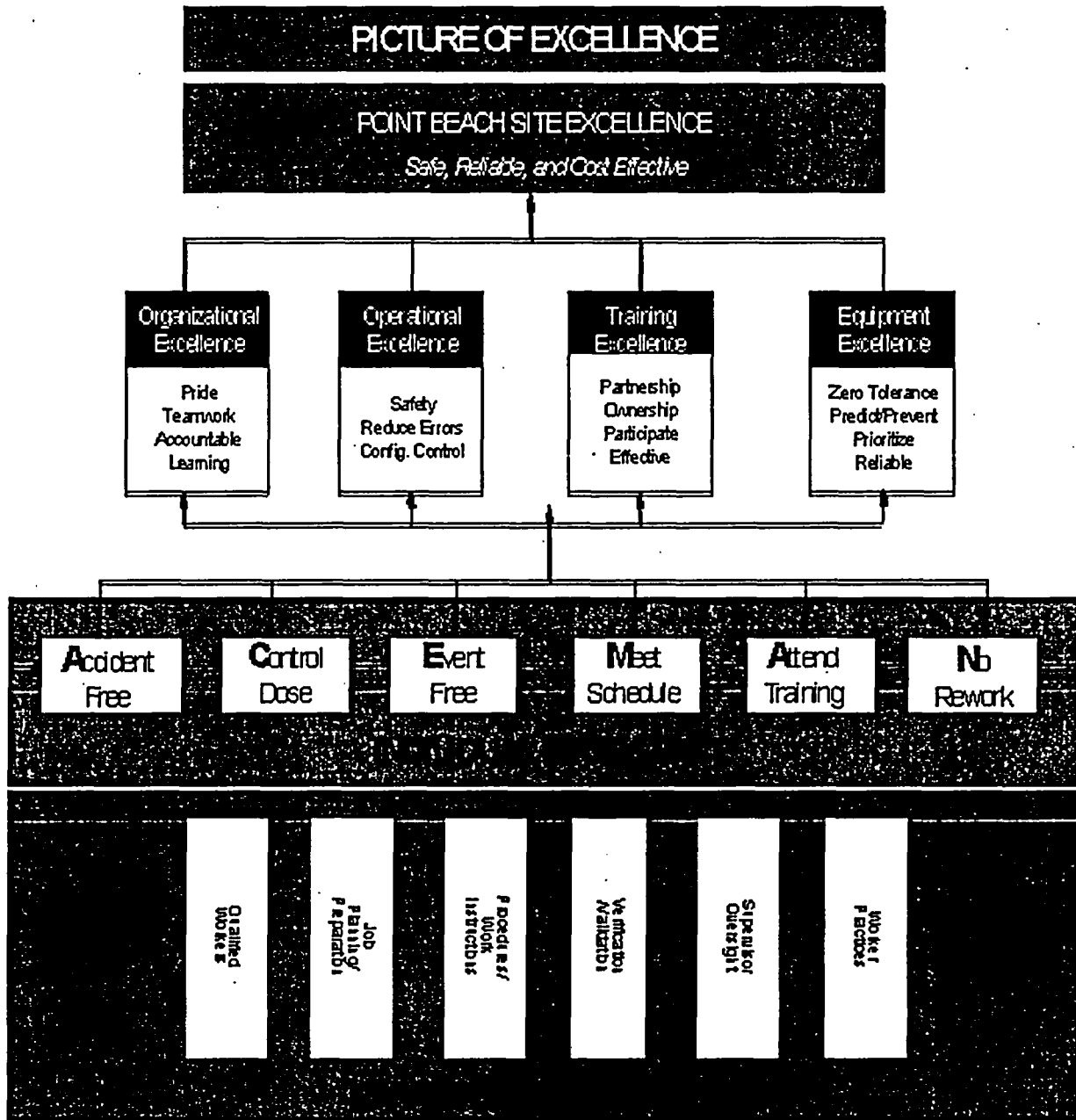




Point Beach Nuclear Plant



Safety + Innovation + Teamwork



EP Team On Call:
Team: _____

Days Since Last HP
Clock Reset: _____

Plan-of-the-Day Meeting

0815-0845
Front Office Conference Room

Work Week: B05A1

Date: Monday, April 19, 2004

U1R28: Day 16
Days to U2R27: 348
Days to U1R29: 523

Safety Event:
_____ J-61

Plan-of-the-Day Agenda

**Purpose: Understand unit status + Ensure ownership and support + Recognize performance
+ Improve communications and teamwork**

• Daily:

Plant Status – Units 1 and 2:

- [Ops] – Plant Conditions (Units 1&2)
- [Ops] – Immediate attention (Pri 2)
- [Ops] – Equipment in reduced status
- [Ops] – Operations' Dept concerns, activities, and priorities
- [Ops] – Status control events (last event)
- [Ops] – Regulatory notification / near misses
- [Ops] – TSACs (active & potential)
- [Plt Mgr] – Communications
- [Ops] – Nuisance alarms
- [Ops] – Operations' Housekeeping Report
- [Ops] – Operating Experience

Surveillance Schedule Review:

- A. [PPG Mgr] – 12-week rolling schedule
- B. [PPG Mgr] – Equipment / system outages

Chemistry / RADCON Review, Units 1 and 2:

Integrated Schedule / System Outages:

- A. [Ops] – Operations' work week issues

Unit Outage (if applicable):

Administrative:

- A. [PPG Mgr] – Plant impact issues

Round Table:

Pagers:

- AOM.....
- Chemistry Shift Supervisor.....
- Industrial Safety
- Maintenance.....
- Outage Manager
- Radiation Protection.....
- Shift Manager.....
- System Engineering
- Work Week Manager

• Monday:

- A. [EP] – Event Response duty list
- B. [Ops/Eng] – Fire Protection summary
- C. [Safety] – Industrial safety action item list & safety performance
- D. [Site Engineering] – Maintenance Rule 'A1' system review
- E. [Project Mgmt] – Major project status
- F. [Business Mgr] – Budget overview
- G. Excellence Plan review

• Tuesday:

- A. [RP] – Annual dose summary
- B. [Security] – Security system status & compensatory measures
- C. [PPG] – Forced outage schedule
- D. [Site Eng] – Thermal cycle efficiency
- E. [VP/Director] – INPO follow up & readiness
- F. [EP] – EP issues
- G. Human Performance
- H. Excellence Plan review

• Wednesday:

- A. [Training] – Training
- B. [WCG] – Management Risk Observations
- C. [Ops] – Operator Workarounds
- D. [Ops] – Leakage list; oil & water
- E. [EP] – EP Drill Schedule
- F. [WCG] – Section XI equipment in double frequency
- G. [Maint] – Housekeeping issues
- H. Excellence Plan review

• Thursday:

- A. [EP] – EP Pager Test Results (when applicable)
- B. [Engr] – Temporary Modifications
- C. [Ops] – Control Room Panel Deficiency Analysis
- D. [Ops] – Disabled alarms (Units 1&2)
- E. [Ops] – Instruments Out-of-Service (Units 1&2)
- F. [PA] – CAP backlogs
- G. [Ops] – Out-of-Spec routine readings
- H. Excellence Plan review

• Friday:

- A. [Reg Affairs] – Upcoming Licensing/QA Reviews
- B. [NOS] – Nuclear Oversight update
- C. [Maint] – WR Backlog
- D. Weekend coverage list (Units 1&2)
- E. [EP] – Event Response "draft" for next week
- F. [Engr] – Predictive Monitoring
- G. [PPG Mgr] – Next week's work week summary and highlights
- H. [Reg Affairs] – NRC/INPO Perf Indicators
- I. Excellence Plan review

Plant Status Report

Plant: Point Beach Nuclear Plant

Date: Monday, April 19, 2004

Operations Report (Summary of Last 24 Hours of Operations):

Unit 1 is in refueling shutdown (Mode 6). Reactor coolant system is at 69% reactor vessel level. Unit 2 is at 100% power.

Days Without LTA: 576

Homeland Security Condition: Yellow

Unit 1				Unit 2			
PWR Mode	PWR Level	MWE (Gross)	MWE (Net)	PWR Mode	PWR Level	MWE (Gross)	MWE (Net)
6	0%	0	0	1	100%	543.3	521.2

Days On Line: 0 Days Since Last Reactor Trip: 277 Days On Line: 151 Days Since Last Reactor Trip: 283

Technical Specification Action Conditions

Item	Unit	Condition	Out of Service		Length (Hr/Days)	Tech Spec Number	Expires		Responsibility	Equip Expected RTS Date
			Date	Time			Date	Time		
2RC-508, U2C RMW Supply	2	Out of service.	11/9/03	0749	31 Days	3.6.3.A	4/26/04	1900	M. Rosseau	8/27/04

Major Equipment Out of Service or Degraded

Item	Unit	Condition	Date	Time	Work Order Number	Due Date	Responsibility
G-01, Emergency Diesel Generator	0	Inoperable due to IT-14 failure.	4/18/04	1616	WO 0407855 / WO 0407856	4/19/04	J. Schmoltd

Operational Problems / Concerns

Item	Unit	Condition	Actions Needed	Due Date	Responsibility
W-30B, F-23/F-29 PAB Exhaust Filter Fan	0	Motor failed.	Motor on-site for re-installation.	4/17/04	D. Laing
2RC-508, U2C Reactor Makeup Supply	2	Valve comes off shut seat momentarily when RMW pump starts.	Provide decision tree to Engineering Manager.	4/23/04	K. Krause
Unit 2, Excess Letdown Flow	2	Inadequate excess letdown flow.	Open and inspect, 2CV-285.	5/7/04	N. Stuart
2RE-215, 2HX-46 Air Ejector Gas Monitor	2	Elevated indication, temperature related.	4 step action plan is developed. Scheduled completion is 5/14/04.	5/14/04	B. Carberry
2CS-134, Hydrazine Control Sample Isolation	2	Significant packing leak - safety concern.	Need action plan and update due date.	4/30/04	D. Duenkel
2P-2A, Charging Pump	2	Excessive seal leakage/prevents continuous use of pump.	WO 0400329, Priority 3, Status 71. Item discussed w/J. Strharsky. Maintenance to perform work order walkdown. Production Planning to schedule work.	4/20/04 4/19/04	J. Strharsky R. Brittingham

Aggregate Review of Issues

Item	Unit	Condition	Actions Planned	Due Date	Responsibility
NONE					

Plant Status Report

Reportable Events
NONE

Outstanding Operability Determinations
NONE

Protected Equipment
2P-29, Aux Feedwater Turbine-Driven Pump / P-38A/B Aux Feedwater Motor-Driven Pumps / P-32A-F Service Water Pumps / K-2A/B Instrument Air Compressors / K-3A/B Service Air Compressors / G-01/G-02/G-03/G-04 Emergency Diesel Generators / Unit 1 Nozzle Dam Panels and Associated Equipment

Load Changes (Planned or Unplanned)
NONE

Reactor Coolant System Leakage		
	Unit 1	Unit 2
Unidentified (gpm)	0 (No leak rate determined due to draindown)	0.05
Identified (gpm)	0	0.04

Major Tests and Evolutions Scheduled in Next 24 Hours
P-35E, electric fire pump test.
Remove G-01 emergency diesel generator from service for heat exchanger cleaning.

Point Beach Nuclear Plant Outage 1R28

DAY 14

Path



Picture

Meets



Doesn't Meet Exceeds

Supporting Operational Excellence

Outage Radiation Performance

Definition/Goal

Analysis and Actions

This indicator measures cumulative dose radiation exposure and total number of personnel-contamination events (PCE's > 5000 cpm) during refueling outages. The dose indicator is measured in Rem and individual PCE events.

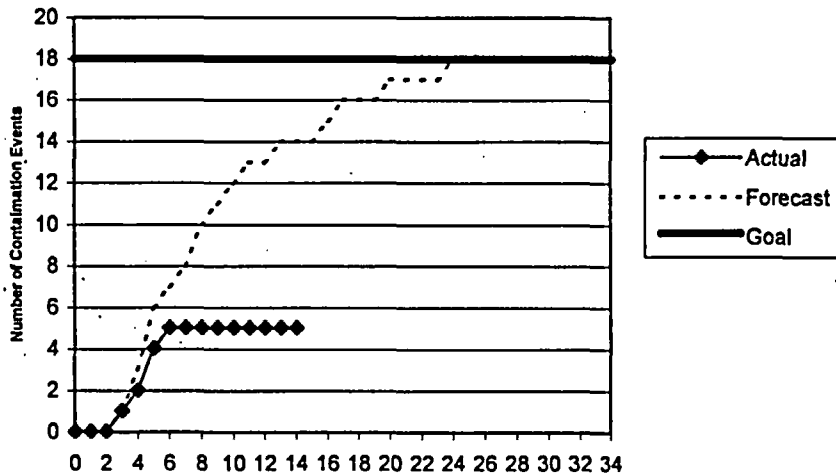
Day 14 - April 17
 Actual = 0.224
 Cumulative = 24.510
 Cumulative Forecast = 48.354

Meets:	<=75 Rem	Actual Cum.	
Exceeds:	<=71 Rem	Dose:	24.51 Rem
Meets: <= 18	Exceeds: <= 12	Actual PCE's:	5

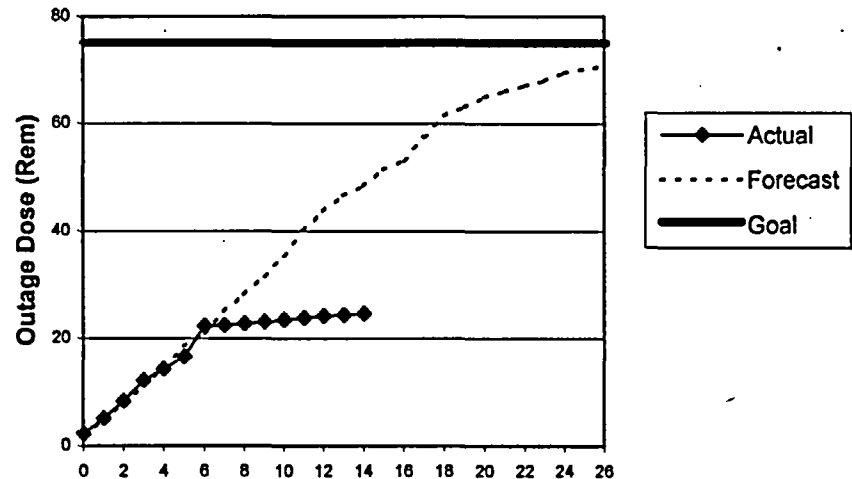
Responsible Manager/Owner

Stu Thomas

Personnel Contamination Events



Cummulative Dose Exposure



NUCLEAR POWER BUSINESS UNIT

PBNP DAILY CHEMISTRY STATUS REPORT

Date: 04/19/04

Time: 5:00

PARAMETER	UNIT 1		UNIT 2		ACTION LEVEL(S)	
REACTOR COOLANT						
Boron, ppm	2892		1280		N/A	
Lithium, ppm	<0.05		2.48		out of range	
Chloride, ppb	<5		<5		> 50	
Fluoride, ppb	<5		<5		> 50	
Sulfate, ppb	<5		<5		> 50	
Silica, ppb	816		442		> 1000 at power	
Dissolved H2, cc/kg	N/A		34.9		< 25, > 50	
Specific Activity, uCi/cc	N/A		1.38E+0		>100 / E-Bar	
100/E-Bar, uCi/cc	N/A		164.4			
I-131 DE, uCi/cc	N/A		2.08E-4		> 0.8	
RWST						
Boron, ppm	3022		3072			
SiO2, ppb	4140		5375			
BDEB (last done dates)	4/14/04 6:00		4/11/04 2:17			
% Solids	4.2		1.13			
% Boric Acid	4.4		2.8			
BAST						
A	% Acid -- Date & Time		3.71		4/16/04 10:10	
B	% Acid -- Date & Time		3.72		4/16/04 12:43	
C	% Acid -- Date & Time		3.76		4/18/04 8:46	
STEAM GENERATORS	A	B	A	B	Action Level	INPO CPI
Chemistry Performance Index (CPI)	N/A		1.00		> 1.1 above 30% power (2)	
P/S Leak Rate, gpd	N/A		0		> 30 or > 60 gpd / hr	
Cation Cond(1), uS/cm	N/A	N/A	0.0576	0.0566	> 0.8	
Sodium, ppb	N/A	N/A	0.2	0.2	> 5	> 0.8
Chloride, ppb	N/A	N/A	0.3	0.1	> 10	> 1.6
Sulfate, ppb	N/A	N/A	0.4	0.4	> 10	> 1.7
pH	N/A	N/A	9.80	9.73	< 8.5	
FEEDWATER	UNIT 1		UNIT 2		Action Level	INPO CPI
Iron, ppb	N/A		2.405		> 3	> 5
Copper, ppb	N/A		0.014		> 0.1	> 0.2
Dissolved O2, ppb	N/A		< 5		> 5	
pH	N/A		9.68			
CONDENSATE					Action Level	
Dissolved O2, ppb	N/A		3.3		> 10	
SAE Flow (scfm)	N/A		3.2			

NOTE: Bolded items require action by Chemistry

(2) Best allowable CPI is 1.0

EMERGENT PROBLEMS / SIGNIFICANT ACTIVITIES / OTHER INFORMATION
Priority Chemistry equipment currently OOS

Outage Status Report

Plant: Point Beach Unit 1 Day: Monday Today's Date / Time: 4/19/04 0400

Outage Duration: Day 16 of 28

Safety Status

Industrial - Within the last 12 hours

OSHA Recordables 0 First Aid cases 0 Significant near misses 0

Total for this outage 1*

Summary: * Pending OSHA Injury - Back Strain

Radiological

Dose outage to date 24.510 Projected to date 48.354 Outage Goal ≤75 R

Difference -23.844 Number of PCEs 5

Summary:

Nuclear

Significant human performance errors and events in last 24 hours 0

Summary:

Plant Status

Mode: Hot Standby (Mode 3) Hot Shutdown (Mode 4) Cold Shutdown (Mode 5) Refueling Shutdown (Mode 6)

RCS: Temperature: 97 Pressure: Vented to Atmosphere RV Level: 69%

Time to Boil: 43 Minutes

Shutdown Safety Assessment

Reactivity: Green Core Cooling: Yellow Power Availability: Green

Containment: Green Inventory: Yellow Spent Fuel Pool Cooling: N/A

Shutdown Safety Assessment Protected Equipment:

Unit 1 A and B Steam Generator Nozzle Dam Panels and Associated Equipment

Major Activities Completed in Last 24 Hours

- Z-13 Polar Crane Main Hoist Return to Service
- IT-300B "B" SG Main Feed Check Valve Testing Portion
- "A" SG Hand Hole Removal

Critical Path and Near Critical Path Activities (Next 24 Hours)

- Schedule: Activities Required to Exit Yellow Risk Conditions
- 1) Complete Repairs & PMT on Z-13 Polar Crane Aux Hoist
 - 2) Reactor Vessel Head Stud Rack Removal
 - 3) B RCP Motor Move
 - 4) Install Cavity Seal Ring
 - 5) Reactor Vessel Head Lift

Significant Outstanding Issues

Date	Issue	Due	Responsibility
4/03/04	Repair Blowdown Tank Leakage	4/20/04	Scott Manthei
4/04/04	1P2A Charging Pump Troubleshooting	4/23/04	Clay Hill
4/08/04	Incorporate Lessons Learned from 1 ST Reduced Inventory Orange Path	4/20/04	Dave Dyzak
4/13/04	Z-13 Polar Crane Repair to Auxiliary Hoist	4/19/04	Dan Laing
4/16/04	Nitrogen Supplied to Nozzle Dams has Potential to Backfeed to Breathing Air	4/19/04	Larry Peterson

Upcoming Major Milestones

	Scheduled		Actual			Scheduled		Actual	
	Date	Time	Date	Time		Date	Time	Date	Time
Cooldown <200°	4/03/04	2100	4/03/04	2230	Heatup >200°	4/25/04	0900		
Head Lift	4/09/04	0900			Initial	4/28/04	1100		
Refueled	4/14/04	0300			On-Line	4/30/04	0100		

U	ACT ID	WO ST	GRP	HPE RISK	EQUIPMENT	Activity Description	Cal ID	DUR	START	FINISH	APR											
											17	Sun 18	Mon 19	Tue 20	Wed 21	Thu 22	Fri 23	Sat 24	Sun 25	Mon 26		
ELECTRICAL MAINTENANCE																						
1	EZMRCP-K	76	EM	DR-Y ML-Y ORT3-N R-H	P-001B-M	P1B MOVE MOTOR FROM PUMP TO STAND		6	18APR04 20:00	19APR04 01:59												
0	EM0305229	76	EM	DR-N ML-N ORT3-N R-M	D-23	MONTHLY SECURITY SYSTEM BATTERY	U	4	19APR04 09:00*	19APR04 12:59												
0	EM0305233	76	EM	DR-N ML-N ORT3-N R-M	D-23	QUARTERLY SECURITY SYSTEM BATTERY	U	4	19APR04 09:00*	19APR04 12:59												
0	EM0305237	76	EM	DR-N ML-N ORT3-N R-M	D-501	MONTHLY G-05 GT GENERATOR 120V DC	U	4	19APR04 13:00*	19APR04 16:59												
0	EM0305241	76	EM	DR-N ML-N ORT3-N R-M	D-501	QUARTERLY G-05 GT GENERATOR 120V DC	U	4	19APR04 13:00*	19APR04 16:59												
0	EM0305202	76	EM	DR-N ML-N ORT3-N R-M	125V	STATION TECH SPEC BATTERIES WEEKLY	U	3	20APR04 00:00*	20APR04 02:59												
1	EM0305150	76	EM	DR-N ML-N ORT3-N R-M	U1A-UV RELAYS	TEST U1A-UV RELAYS 1RMP 9071-1 & 9075-1	U	3	20APR04 08:00*	20APR04 10:59												
1	EM0407696	77	EM	DR-N ML-N ORT3-N R-M	SERVICE	1SERVICE OBTAIN GREASE SAMPLE		3	20APR04 09:00	20APR04 11:59												
1	EM0305155	76	EM	DR-N ML-N ORT3-N R-M	U1B-UV RELAYS	TEST U1B-UV RELAYS 1RMP 9071-2 & 9075-2	U	3	20APR04 11:00	20APR04 13:59												
MECHANICAL MAINTENANCE MM1 RIDINGS/ BRITTINGHAM																						
1	MM0214052	76	MM1	DR-N ML-N ORT3-N R-M	HX-001A	HX-1A, OPEN SG HANDHOLES	U	10	18APR04 12:00*	18APR04 23:59												
1	MM-8480D1	76	MM1	DR-N ML-N ORT3-Y R-H	R-1	MOVE REACTOR VESSEL HEAD TO RHLDA		4	19APR04 15:00	19APR04 18:59												
1	MM-8480E	76	MM1	DR-N ML-N ORT3-N R-H	R-1	REMOVE UPPER INTERNALS	U	4	20APR04 05:00	20APR04 10:59												
1	MM0214054	76	MM1	DR-N ML-N ORT3-N R-M	HX-001B	HX-1B, OPEN SG HANDHOLES	U	10	20APR04 05:00	20APR04 16:59												
MECHANICAL MAINTENANCE- RIDINGS BRITT (RCP "B")																						
1	MM-8485B1	76	MM3	DR-Y ML-Y ORT3-Y R-M	P-001B	PLACE BACKSEAT COLLECTION SYS IN SERVICE	U	1	19APR04 14:00	19APR04 14:59												
1	MM-8485K	76	MM3	DR-N ML-N ORT3-N R-M	P-001B	P-1B; ALIGN SEAL COLLECTION TO CAVITY	U	1	19APR04 22:00	19APR04 22:59												
NON-DESTRUCTIVE TESTING																						
1	NGNDE18X		NDE	DR-N ML-N ORT3-N R-M	NDE-18	MINI-SUB INSPECTIONS-INTERNALS		3	20APR04 05:00	20APR04 07:59												
OPERATIONS SWINGSHIFT																						
0	OP0215612	77	OP3	DR-N ML-N ORT3-N R-M	O-IT-0014.1	IT-14, FO TRANSFER SYSTEM PUMPS/		3	18APR04 16:00*	18APR04 18:59												
OPERATIONS																						
1	RP1A-060		OPS	DR-N ML-N ORT3-N R-M	O-RP-001A	FILL CAVITY FOR ROD UNLATCH	U	3	19APR04 17:00	19APR04 21:59												

- REACTOR COOLANT PUMP MOTOR
0215205 - 128EM
- SECURITY SYSTEM BATTERY
0305229 - B05A1
- SECURITY SYSTEM BATTERY
0305233 - B05A1
- G-05 GT GENERATOR 120V DC BATTERY
0305237 - B05A1
- G-05 GT GENERATOR 120V DC BATTERY
0305241 - B05A1
- 125V SYSTEM MULTI AND/OR NON-NUMBERED EQUIPMENT
0305202 - B05A1
- TRAIN A 4.16 KV AND 480 V SWITCHGEAR RELAY TEST
0305150 - B05A1
- MISC EQUIPMENT REPAIR/SERVICE
0407696 - 128EM
- TRAIN B 4.16 KV AND 480 V SWITCHGEAR RELAY TEST
0305155 - B05A1

- STEAM GENERATOR
0214052 - 128MM
- REACTOR VESSEL AND ASSEMBLY
0214134 - 128MM
- REACTOR VESSEL AND ASSEMBLY
0214134 - 128MM
- STEAM GENERATOR
0214054 - 128MM

- REACTOR COOLANT PUMP
0214119 - 128MM
- REACTOR COOLANT PUMP
0214119 - 128MM

- MINI-SUB INSPECTIONS PER NDE-18
226EN

- G-01 EDG FUEL OIL TRANSFER SYSTEM PUMPS/VALVES
0215612 - B05A1

- FILL UPPER CAVITY FOR UNLATCHING RODS (RP-1A)
128OP

Early Bar
 Progress Bar
 Critical Activity

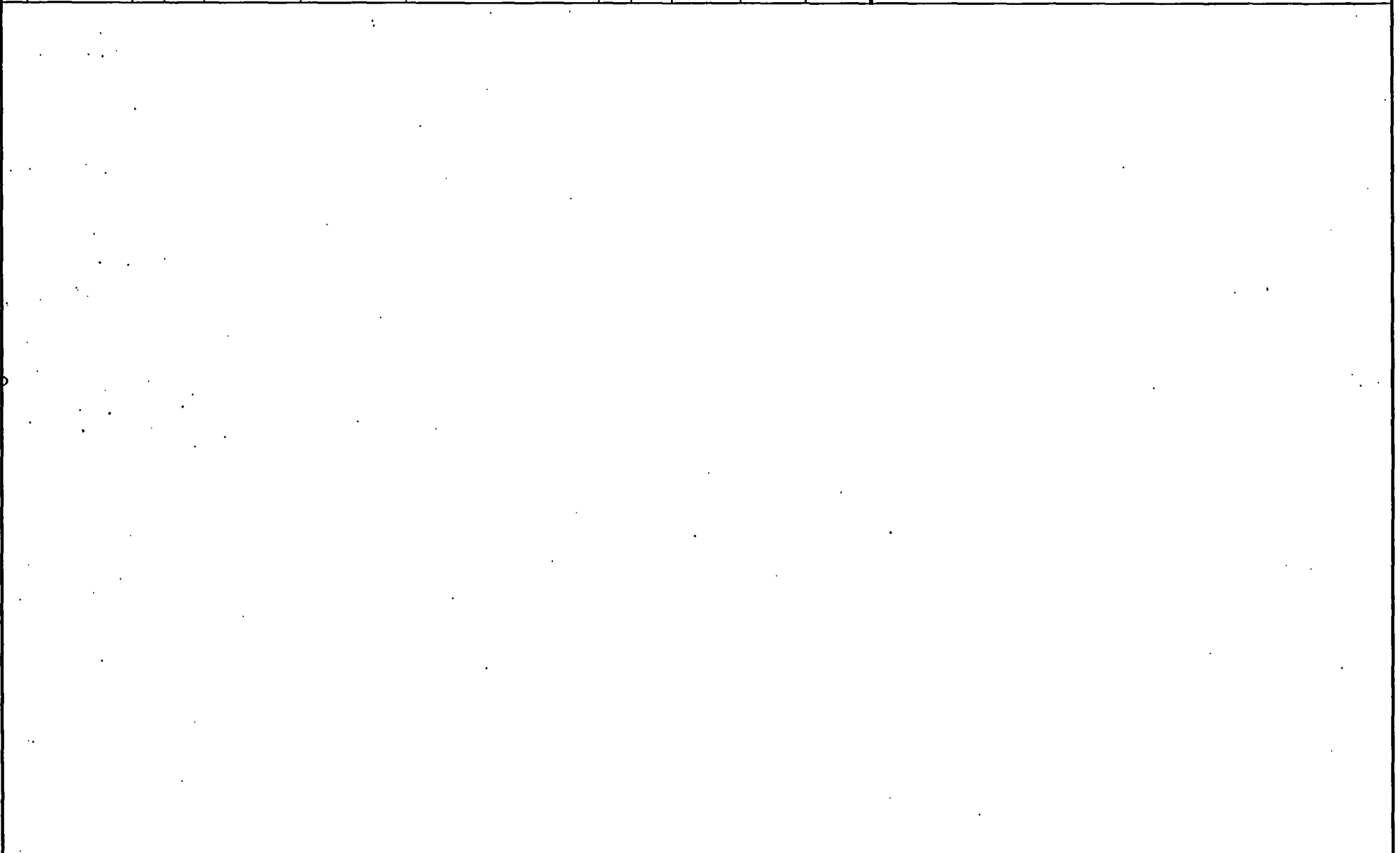
© Primavera Systems, Inc.

NMC / WE
PBNP U1 Refueling 28 Outage

LT-81 HUMAN ERROR RISK BARCHART
FL-81 HUMAN ERROR POTENTIAL

Work Activity Risk Assignment

U	ACT ID	WO ST	GRP	HPE RISK	EQUIPMENT	Activity Description	Cal ID	DUR	START	FINISH	APR											
											17	Sun 18	Mon 19	Tue 20	Wed 21	Thu 22	Fri 23	Sat 24	Sun 25	Mon 26		
OPERATIONS												8,16	0,8,16	0,8,16	0,8,16	0,8,16	0,8,16	0,8,16	0,8,16	0,8,16	0,8,16	0,8,16
1	RP4A-020		OPS	DR-N ML-N ORT3-N R-M	O-RP-004A	UNLATCH CONTROL RODS	U	4	19APR04 23:00	20APR04 02:59											<input type="checkbox"/> UNLATCH CONTROL RODS 1280P	(RP-4A)



Early Bar
 Progress Bar
 Critical Activity

© Primavera Systems, Inc.

NMC / WE
PBNP U1 Refueling 28 Outage

LT-81 HUMAN ERROR RISK BARCHART
 FL-81 HUMAN ERROR POTENTIAL

List of Assessments Week of April 19

Nuclear Oversight Assessments

- Radiation Protection Assessment
- Control of Special Processes (Modifications Install) Assessment
- ISI Assessment
- IST Assessment
- Conduct of Operations Assessment
- Boric Acid Leak Program
- Relief Valve Program
- Snubbers Program

(These are being conducted in parallel with Outage Support)

Self-Assessments

- None

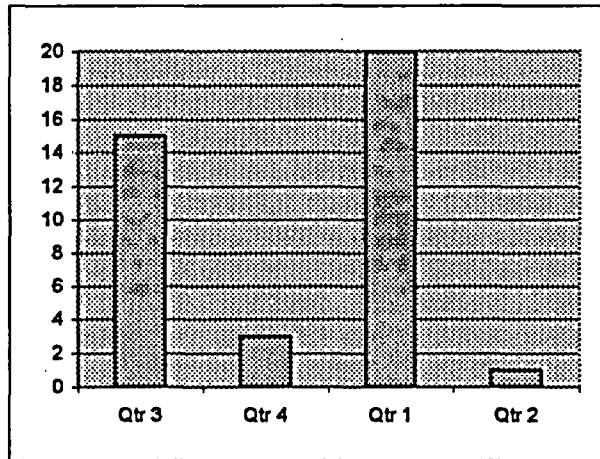
INPO UPDATE

- New Chemistry Discussion Board

Minor Injuries

WE/NMC

	Qtr 3	Qtr 4	Qtr 1	Qtr 2
Assessment	0	0	0	0
Chemistry	1	1	2	1
Communications	1	0	1	0
Engineering	0	0	1	0
Facilities	4	0	4	0
I H & S	0	0	0	0
I & C	0	0	0	0
License Renewal	0	0	1	0
Maintenance	2	0	5	0
NSS	0	0	1	0
Operations	3	2	3	0
Production Planning	0	0	0	0
Procedures	0	0	0	0
Nuclear Oversight	0	0	0	0
Rad Protection	1	0	0	0
Records	0	0	0	0
Reg Services	0	0	0	0
Training	3	0	2	0
Total WE/NMC	15	3	20	1



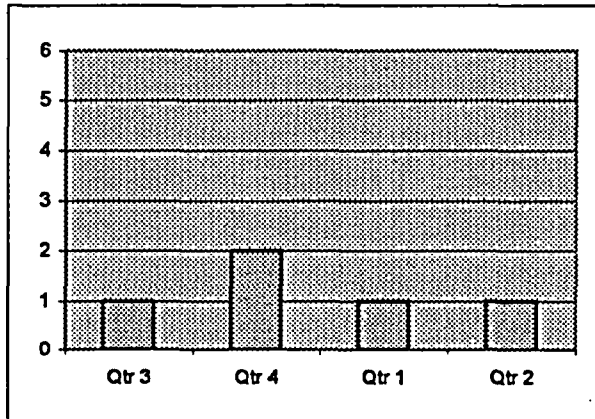
Total YTD 2004

21

Recordable Injuries

WE/NMC

	Qtr 3	Qtr 4	Qtr 1	Qtr 2
Assessment	0	0	0	0
Chemistry	0	0	0	0
Communications	0	0	0	0
Engineering	0	0	0	1
Facilities	0	0	0	0
I H & S	0	0	0	0
I & C	0	0	0	0
Maintenance	1	2	0	0
NSS	0	0	0	0
Operations	0	0	1	0
Production Planning	0	0	0	0
Procedures	0	0	0	0
Nuclear Oversight	0	0	0	0
Rad Protection	0	0	0	0
Records	0	0	0	0
Reg Services	0	0	0	0
Training	0	0	0	0
Total WE/NMC	1	2	1	1

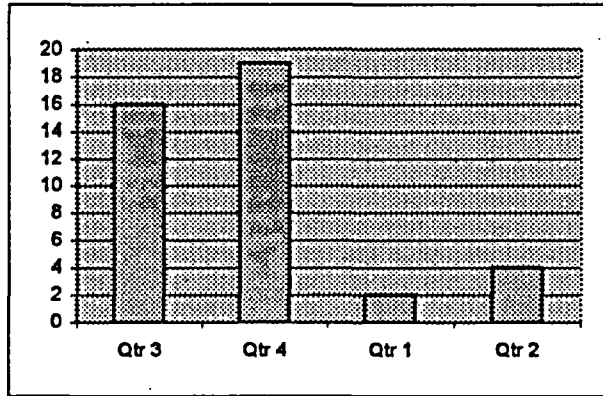


YTD 2004

1

Minor Injuries

	Contractors			
	Qtr 3	Qtr 4	Qtr 1	Qtr 2
AMES	0	4	0	0
Bartlett Nuclear	0	0	0	1
Crane	0	0	0	0
DZNPS	8	4	1	0
Harvey Cement	1	0	0	0
LMT	0	1	1	1
NU Energy	1	0	0	0
Phillips-Getschow	0	0	0	0
TWC - Wackenhut	4	4	0	0
Van-Ert	0	0	0	0
Waterblaster	0	0	0	0
Westinghouse	2	10	0	2
Total Contractors	16	19	2	4

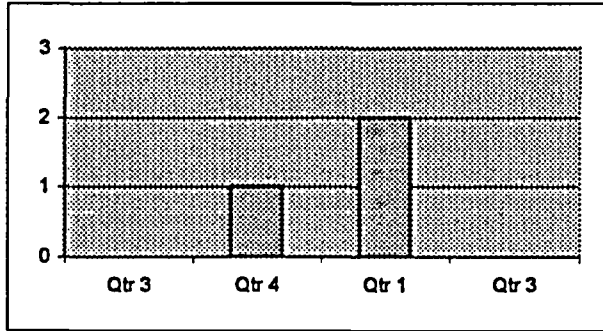


YTD 2004

4

Recordable Injuries

	Contractors			
	Qtr 3	Qtr 4	Qtr 1	Qtr 3
Bartlett Nuclear	0	0	0	0
Copy Machine	0	0	1	0
Crane	0	0	0	0
DZNPS	0	0	0	0
LMT	0	0	0	0
Phillips-Getschow	0	0	0	0
TWC - Wackenhut	0	0	1	0
Van-Ert	0	0	0	0
Waterblaster	0	0	0	0
Westinghouse	0	1	0	0
Total Contractors	0	1	2	0



YTD 2004

2

Based on injury reports submitted by 04/17/2004

All Excellence Plan Commitment Action Steps Due Within 60 Days

		<u>Track</u>	<u>Step Owner</u>	<u>Start Date</u>	<u>Due Date</u>	
Assessment						
OP-10-011	Improve Effectiveness of Self Assessments					
OP-10-011.3.D	Perform an effectiveness review of site leadership observation programs.	CA028467	Purcell, J.	2/15/2004	5/15/2004	Commitment
OP-10-011.4.C	Perform benchmarking effectiveness review.	CA028465	Purcell, J.	4/15/2003	5/15/2004	Commitment
OP-10-011.5.F	Develop a process for site leadership review of completed self-assessments.	CA030635	Purcell, J.	1/12/2004	5/15/2004	Commitment
Total # of Items for Assessment						: 3
Emergency Planning						
OP-09-004	Upgrade Emergency Action Levels (EALs)					
OP-09-004.8	PORC approval of EAL upgrade changes.	CA052689	Schwartz, P.	4/15/2004	5/21/2004	Commitment
OP-09-004.9	Submit site approved EAL upgrade changes to state and counties for approval.	CA052690	Schwartz, P.	5/21/2004	5/28/2004	Commitment
OP-09-005	Control / Maintenance of EP Required Equipment					
OP-09-005.4	Document the licensing basis of required EP equipment contained in the matrix.	CA052409	Schwartz, P.	2/20/2004	6/1/2004	Commitment
OP-09-005.5	Evaluate whether each piece of EP Equipment in the matrix meets its associated EP functional requirements.	CA052413	Schwartz, P.	2/23/2004	6/7/2004	Commitment
OP-09-005.6	Perform an assessment of the equipment in the matrix for reliability / maintainability / obsolescence.	CA052414	Schwartz, P.	2/23/2004	6/7/2004	Commitment
OP-09-005.7	Evaluate the adequacy of preventative Maintenance (PM) performed on EP equipment contained in the matrix.	CA052415	Schwartz, P.	2/23/2004	6/7/2004	Commitment
Total # of Items for Emergency Planning						: 6
Engineering Design						
OP-14-001	Improve the Configuration Management Program					
OP-14-001.11	Implement fleet standards for modification closeout (Objective 2).	CA030747	Marean, J.		5/20/2004	Commitment
OP-14-001.12	Interim Effectiveness Review (EFR).	EFR030748	Holt, K.		5/20/2004	Commitment
Total # of Items for Engineering Design						: 2
Engineering Design Civil/Structural - PB						
EQ-15-012	Manhole and Cable Vault Flooding					
EQ-15-012.8	Complete installation of modification to dewater Manholes 1 and 2.	CA031053	Corbin, T.	3/29/2004	5/28/2004	Commitment
Total # of Items for Engineering Design Civil/Structural - PB						: 1
Engineering Design Configuration Management (and Q-List Items)						

All Excellence Plan Commitment Action Steps Due Within 60 Days

		<u>Track</u>	<u>Step Owner</u>	<u>Start Date</u>	<u>Due Date</u>	
OP-14-007	Updated Vendor Technical Information Program (VTIP)					
OP-14-007.8	<i>Review and address issues identified in the VTIP self-assessment and in CA000248, CA001634, and CA002968.</i>	CA055685	Holt, K.	4/15/2004	5/20/2004	Commitment
Total # of Items for Engineering Design Configuration Management (and Q-List Items)						: 1
Engineering Processes						
OR-05-008	AFW Root Cause Evaluation (RCE) Corrective Actions					
OR-05-008.2	<i>Develop an effectiveness review plan and schedule.</i>	CA055859	Peterson, L.	4/15/2004	5/11/2004	Commitment
OR-05-008.3	<i>Establish a cross functional team to perform the effectiveness review.</i>	CA055860	Peterson, L.	5/15/2004	6/7/2004	Commitment
Total # of Items for Engineering Processes						: 2
Performance Assessment						
OR-01-004	Individual Behavioral Excellence					
OR-01-004.26	<i>Revise CAP Trend reports to bin vs. barriers, results and attributes.</i>	CA054894	Hettick, D.	3/1/2004	5/28/2004	Commitment
OR-01-004.34	<i>Revise Human Performance trend reports to bin vs. barriers, results, and attributes.</i>	CA055029	Hennessy, F.	3/1/2004	5/28/2004	Commitment
Total # of Items for Performance Assessment						: 2
Production Planning						
OR-01-004	Individual Behavioral Excellence					
OR-01-004.17	<i>Build additional accountability into work week process via review of work week performance at POD.</i>	CA054878	Strharsky, J.	5/10/2004	6/11/2004	Commitment
Total # of Items for Production Planning						: 1
Site Projects						
EQ-15-001	AFW Appendix R Firewall Project					
EQ-15-001.13	<i>Modification Closeout</i>	CA030842	Morse, M.	12/19/2003	5/30/2004	Commitment
Total # of Items for Site Projects						: 1

Point Beach CAP Activities

Delay of Game Clock

Monday, 04/19/2004

17 Days since last fumbled item

3 Days since last Unassigned item

