

FORM NC.DE-WB.ZZ-0003-1
EQUIVALENT REPLACEMENT CONFIGURATION CHANGE PACKAGE
COVER SHEET

CHANGE NO.: 4E0 - 3507 PACKAGE NO.: 03

COMPONENT ID NO.(S) Per Attachment No.1 MODEL/PART NO.(S) Per Attach.1

=====

This component has been evaluated as an acceptable replacement in the EQUIVALENT REPLACEMENT 10CFR50.59 Review and Safety Evaluation [A-0-VARX-NSE-0727 as referenced in NC.NA-AP.ZZ-0008(Q)] by virtue of its operational equivalency to the original component or by evaluation of its design specifications exceeding the application design requirements as documented on Form NC.DE-WB.ZZ-0003-4, Equivalent Replacement Evaluation.

=====

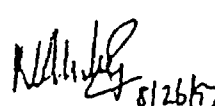
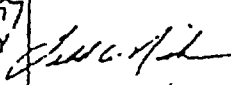
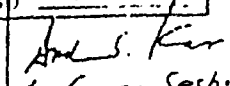
<u>CLASSIFICATION:</u>	YES	NO	NUMBER
Obsolete Spare Part (OSP) Equivalent Replacement?	<input type="checkbox"/>	<input checked="" type="checkbox"/>	
Important-to-Safety (ITS)?	<input checked="" type="checkbox"/>	<input type="checkbox"/>	
Code Job Package Required?	<input checked="" type="checkbox"/>	<input type="checkbox"/>	<u>PH-97-096</u>
External Commitment?	<input type="checkbox"/>	<input checked="" type="checkbox"/>	_____
SAR Change Required?	<input type="checkbox"/>	<input checked="" type="checkbox"/>	_____
Q-Listed (Salem)?	<input type="checkbox"/>	<input type="checkbox"/>	N/A <input checked="" type="checkbox"/>

Hope Creek: Q Qs Qsh F R N/A

=====

DESIGN VERIFICATION: The Design Verifier of this DESIGN CHANGE PACKAGE forms by Cover Sheet signature that the change is an equivalent replacement and not a change of design. Completion of a Certificate of Design Verification is not required.

=====

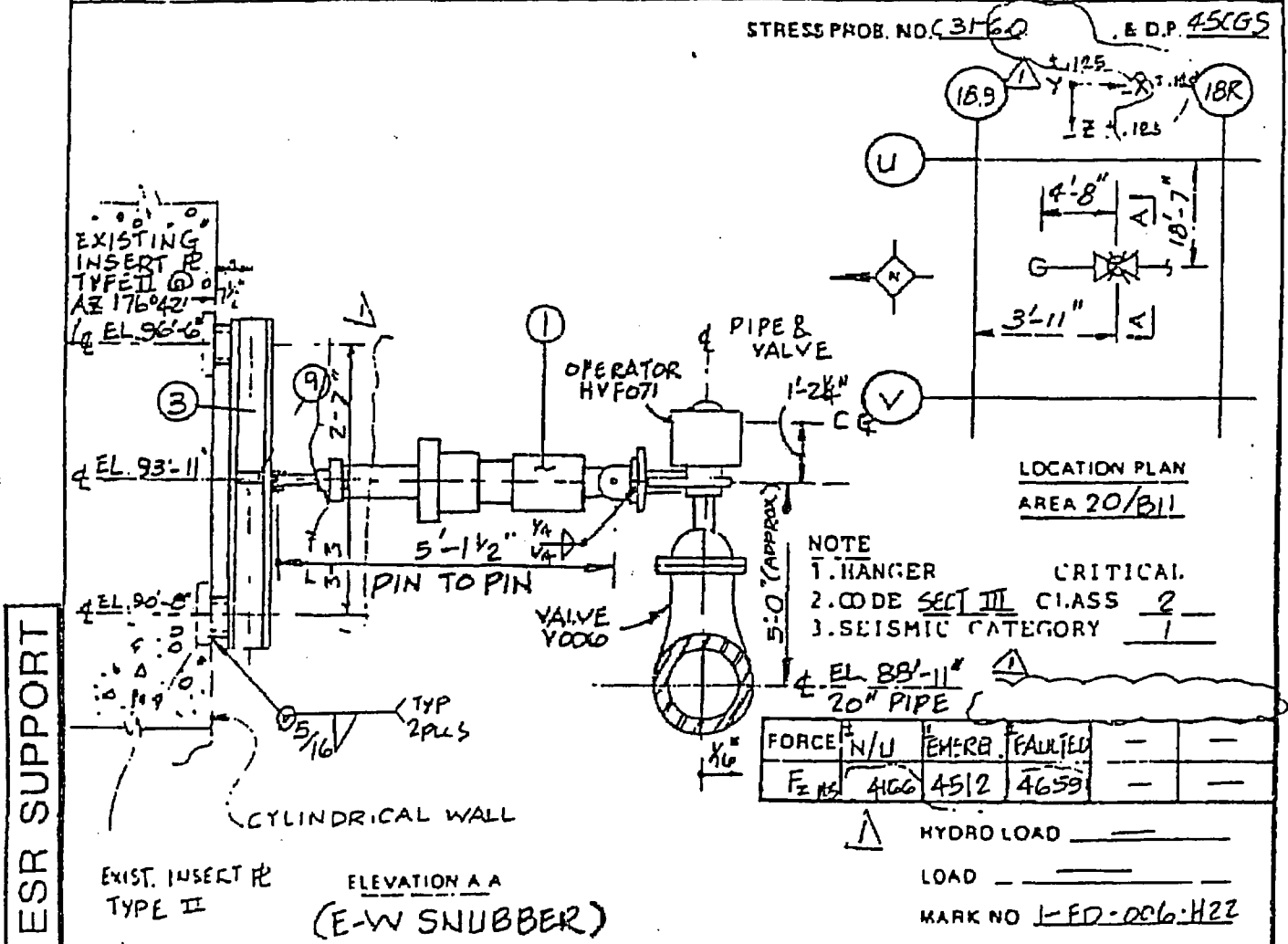
0	Original Issue	 N. D. Mistry x1832 8/26/97	 8/26/97	<div style="border: 1px solid black; padding: 5px; margin-bottom: 5px;"> SEP - 2 1997 </div> NUCLEAR BUSINESS UNITS CONTROLLED COPY NO <u>62</u>	 for George Serbold 8-27-97
Rev No.	Revision Summary	Preparer Phone No. & Date	Peer Review & Date	Design Verifier & Date	PSE&G Approval/Date

ATTACHMENT NO. 1
TAP Scope of Snubbers

CHANGE NO.: 4EO-3507
PACKAGE NO.: 03
CP REV. NO.: 0

Stress Calc No.	Hanger No.	Snubber Size	LISEGA Part No.
C0026	1-P-BE-020-H004	PSA0010	306256RC1
C0026	1-P-BE-020-H005	PSA0010	306256RE1
C0026	1-P-BE-020-H007	PSA0010	306256RE1
C0028	1-P-BE-044-H006	PSA0035	305253RE6
C0030	1-P-BJ-002-H003A	PSA0035	307256RC5
C0030	1-P-BJ-002-H003B	PSA0035	307256RC5
C0031	1-P-FD-006-H015A	PSA0035	307256RE1
C0031	1-P-FD-006-H015B	PSA0035	307256RE1
C0031	1-P-FD-006-H018	PSA0035	307256RE1
C0031	1-P-FD-006-H022	PSA0003	305256RE1
C0031	1-P-FD-014-H002A	PSA0010	306256RE1
C0031	1-P-FD-014-H002B	PSA0010	306256RE1
C0041	1-P-FC-007-H009	PSA0003	304256RE1
C0041	1-P-FC-007-H016	PSA0035	307256RE1
C0041	1-P-FC-007-H017	PSA0010	306256RE1
C0050	1-P-BC-046-H009	PSA0035	307256RC5
C0051	1-P-BC-044-H006	PSA0035	305253RE6
C0051	1-P-BC-044-H028	PSA0100	306256RC6
C0053	1-P-BC-087-H009	PSA0035	307256RC5
C0054	1-P-BC-088-H006	PSA0035	307256RE1
C0054	1-P-BC-088-H025	PSA0100	307256RC6
C0060	1-P-BC-026-H002	PSA0010	306256RE1
C0060	1-P-BC-026-H003	PSA0010	306256RE1
C0060	1-P-BC-026-H004	PSA0003	305256RE1
C0060	1-P-BC-027-H014	PSA0010	306256RC1
C0060	1-P-BC-027-H016	PSA0010	306256RE1
C0060	1-P-BC-027-H018	PSA0010	306256RE1
C0060	1-P-BC-034-H002	PSA0003	305256RE1

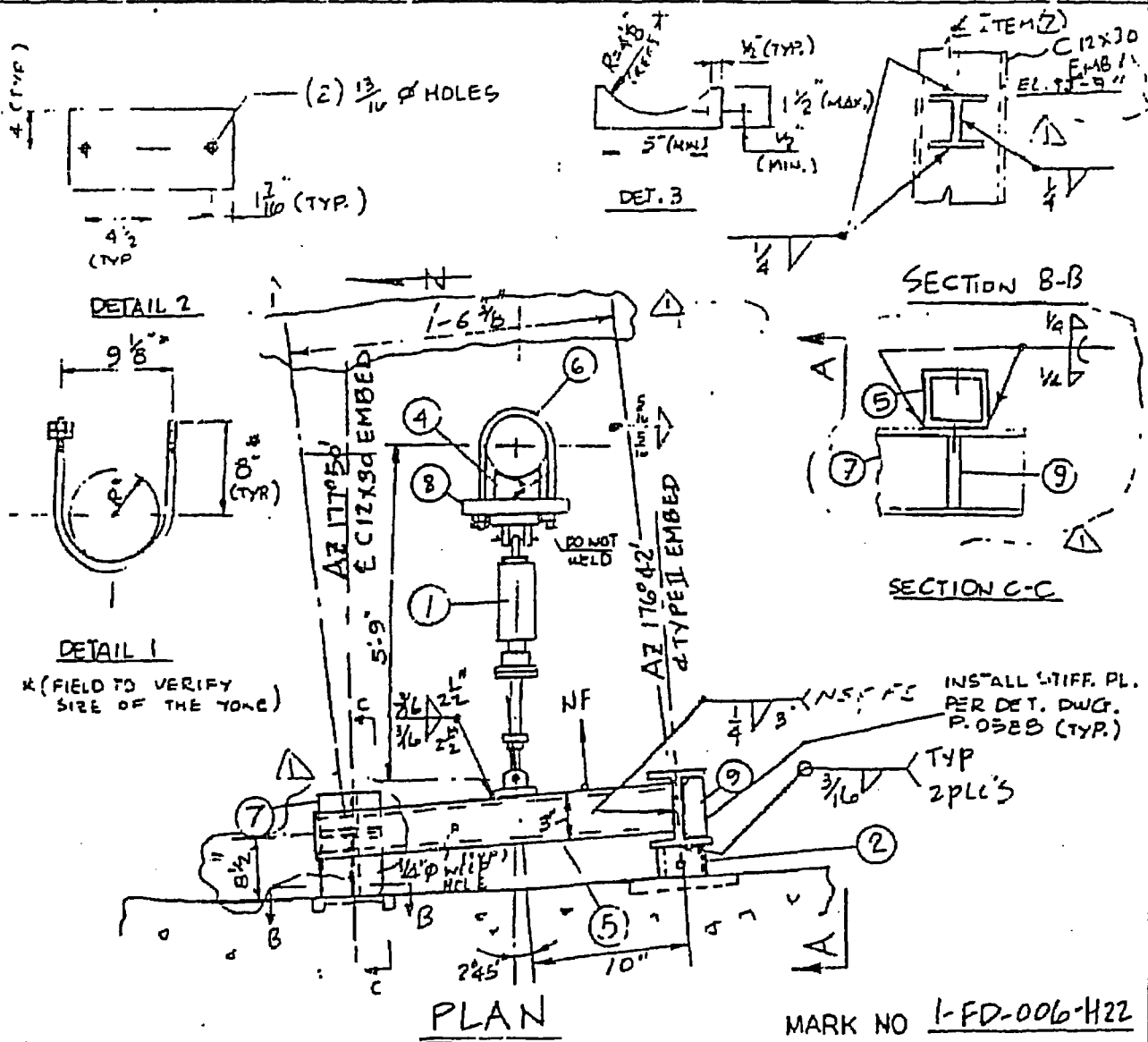
ITEM NO	NO RECD	FIG. NO.	SIZE	DESCRIPTION	MAT'L
1	1	307	# 3	MECHANICAL SHOCK SUPPRESSOR 5" STROKE W/ADDITIONAL REAR BRACKET LOAD = $\frac{W}{g} \cdot a$ MVT = $\frac{W}{k} \cdot a$ CS = $\frac{W}{g} \cdot v^2$, HS = $\frac{W}{g} \cdot \frac{v^2}{2}$, W = 3'-2 1/8" ACCELERATION = .02g, MAT'L PER B&PV, CODE SECT. III	
2	2	-	TS 4 x 4 x 3/8 X 0'-8" LG (FIELD CUT TO SUIT)	(A)	A BFL 1/6 OF B&PV
3	1	-	W 6 X 70 X 7'-0" LG (FIELD CUT IF NECESSARY)		
4	-	-	F 1 1/2" THICK PLATE (SEE DET. 3. FIELD CUT TO SUIT TO MATCH THE DIAMETER OF THE YOKE.) (BILL OF MATERIAL CONT. ON SHT. 2 OF 2)		
NOTE ALL MAT'L TO BE A-36 SA-36 U.V.O.					



ISSUED FOR FINAL STRESS CALC. AND INCORP.	REV DATE	FCR P-13046 F02	REVISIONS	PIPE	BY CH/K/DES/EN/ENG/STR/PO	C	REV
PUBLIC SERVICE ELECTRIC AND GAS COMPANY HOPE CREEK GENERATING STATION NO. 1 & 2 UNITS		SAN FRANCISCO		SYS ISO 1-P-FD-01 REV 19		REF DWGS STEEL C-0702-1, REV. 15	
PIPE SUPPORT REACTOR BLDG.			JOB NO	DRAWING NO		REV	
HPCI TURB. SUPPLY & EXHAUST			10855	1-P-FD-006-H22(Q)		1	
				SHT. 1 OF 2			

PMA

ITEM NO	NO REVD	FIG NO	SIZE	DESCRIPTION	MAT'L
5	1	—	TS 4x3x1/2-0 LG	(CUT TO SUIT)	A 501-TF EE B
6	1	1375	1/2" Ø	SPECIAL U-BOLT THREADED BOTH ENDS W/ 4 HEX NUTS (SEE DET. 1)	
7	1	—	WE x 20 x 2'-0" LG	(FIELD CUT IF NECESSARY)	
8	1	—	PL 3/4" x 8" x 12" LG	(SEE DETAIL 2)	
9	2	—	PL 3/8" x 2 3/8" x 5 3/8"	(STIFFENER PL. PER DET. P-0588)	
10	1	—	DELETED		



SEE SHT. 1	REVISIONS	PIPE	BY CH'K	DESCR'ED	ENG	STRS	PROJ	
PUBLIC SERVICE ELECTRIC AND GAS COMPANY HOPE CREEK GENERATING STATION NOS 1 & 2 UNITS	DATE	ISO	REF DWGS	PIPE	STEEL	JOB NO	DRAWING NO	REV
PIPE SUPPORT REACTOR BLDG. HPCI TURB. SUPPLY & EXHAUST						10855	1-P-FD-006-H22 (R) SHT 2 OF 2	1

PART 2 - MODIFICATION AND TESTING, SECTION 5.0
 FORM NC.DE-WB.ZZ-0003-7
 MODIFICATION DOCUMENT COVER SHEET

MD NO.: H 38
 CHANGE NO.: 4EO-3507
 PACKAGE NO.: 03
 CP REV. NO.: 0

PAGE NO. 1
 REV. NO. 0

DOCUMENT CHANGED: DWG# 1-P-FD-006-H022 Rev. 1 SHT/VOL NO.: 001
 (PROVIDE TYPE, NUMBER AND REV. THAT CHANGE IS BASED ON)

ACTUAL CHANGE TO BE MADE: Replace existing snubber with LISEGA Hydraulic Snubber as detailed below :

Hanger No.	Existing Snubber	Replaced by New LISEGA Part no.		
		Snubber	Pin	Stud / Pin
1-P-FD-006-H022	PSA0003	305256RE1	30-1003-075	30-1003-075

New Cold Set (CS) (in.)	New Hot Set (HS) (in.)	New Stroke (in.)	Flip (Y/N)	Shroud Removed (Y/N)
N/A	N/A	5.88	N	N

Construction / DOC. Updater Note:

- "Flip" refers to whether or not the new snubber body is to be reversed from its original position.
- "Shroud Removed" refers to whether or not the new snubber housing is to be removed due to interference concerns.
- "Flip" and "Shroud Removed" condition may be changed, from what is specified, as long as it is properly documented (as-built) on this MD.
- Remove any design load information that appears on the drawing.

0	ORIGINAL ISSUE	<i>MCC</i> M. C. Chang 8-1-97	<i>SN</i> T. Nickerson 8-12-97		
REV. NO.	REVISION SUMMARY	PREPARED BY & DATE	PEER REVIEW & DATE	INSTALLED MCRs	INSTALLER & DATE