

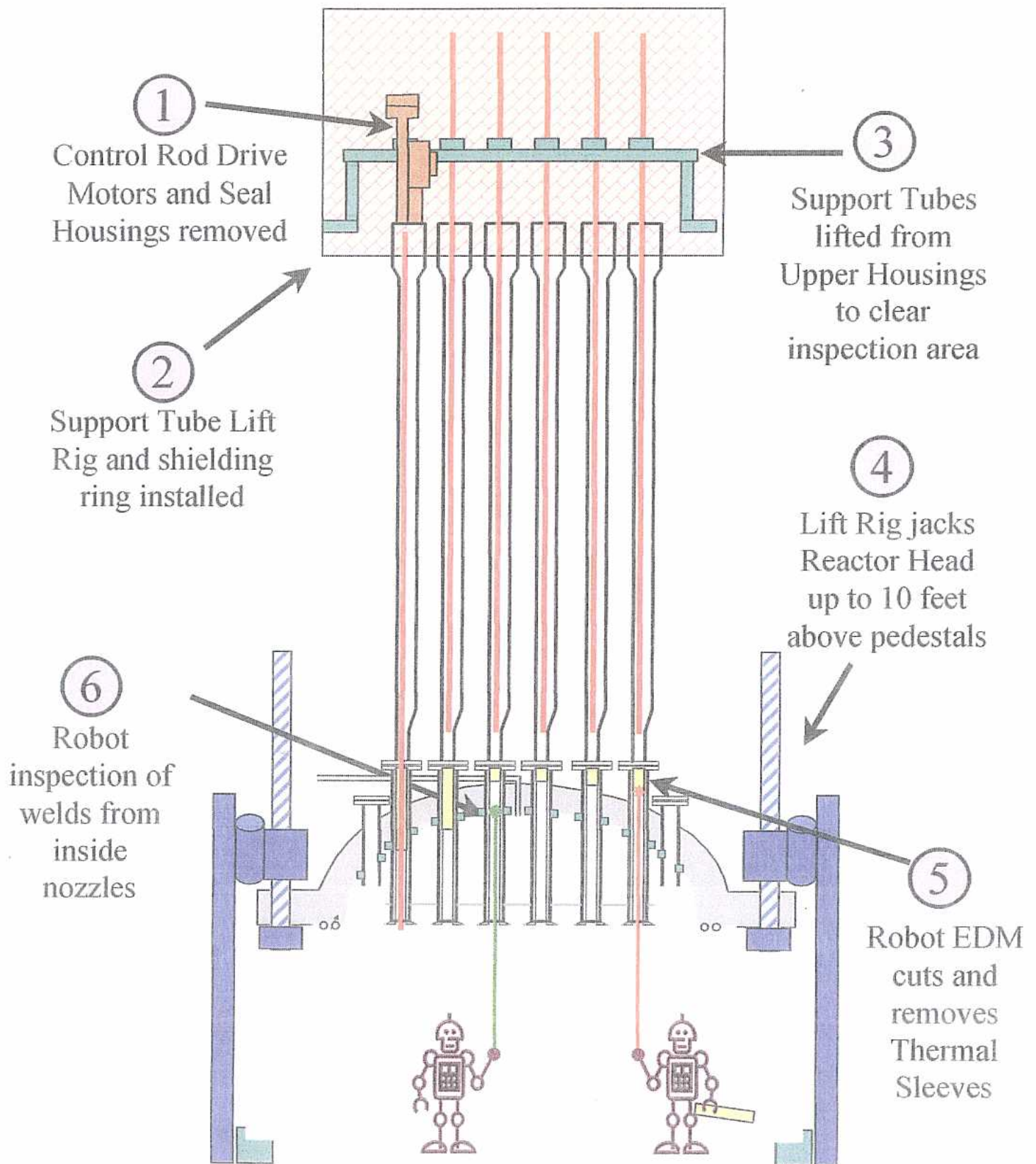
**From:** "Neve, Douglas A." <Douglas.Neve@nmcco.com>  
**To:** <jsj1@nrc.gov>  
**Date:** 12/21/04 7:47AM  
**Subject:** Slides from public meeting

John,  
I reviewed the slides from our November 30, 2004 meeting one more time. There is no proprietary information contained in them. Sorry for the delay.  
Doug

# **Palisades 2004 Reactor Head Inspection and Repair**

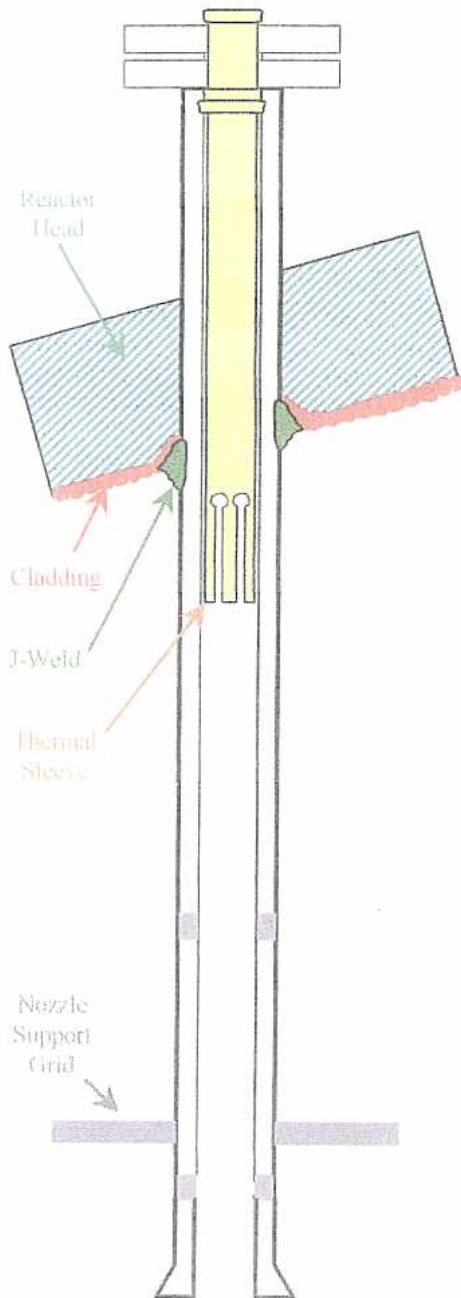
**Information Only**

# Reactor Head Inspection 101

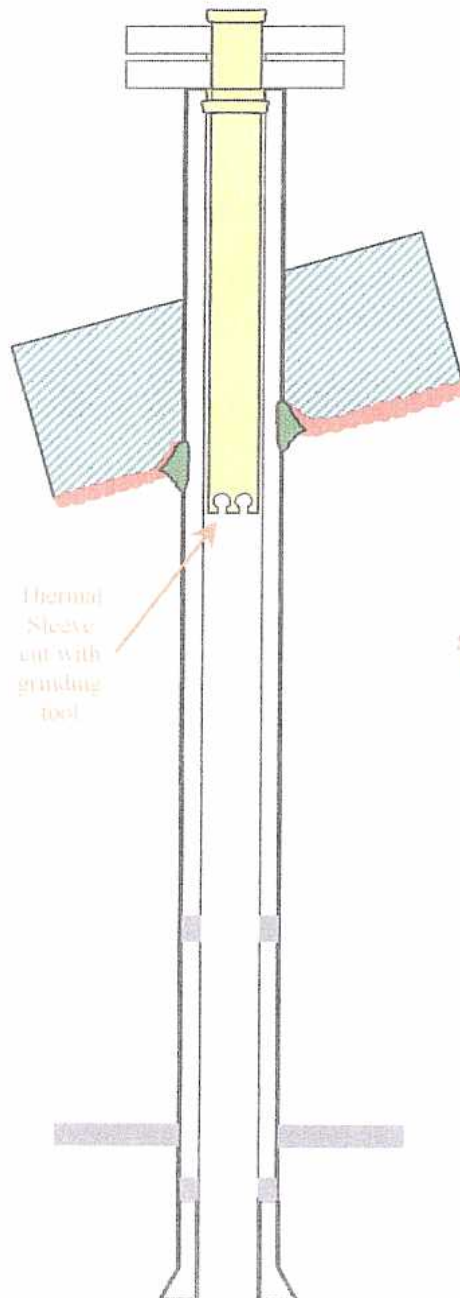


# Thermal Sleeve Cutting 101

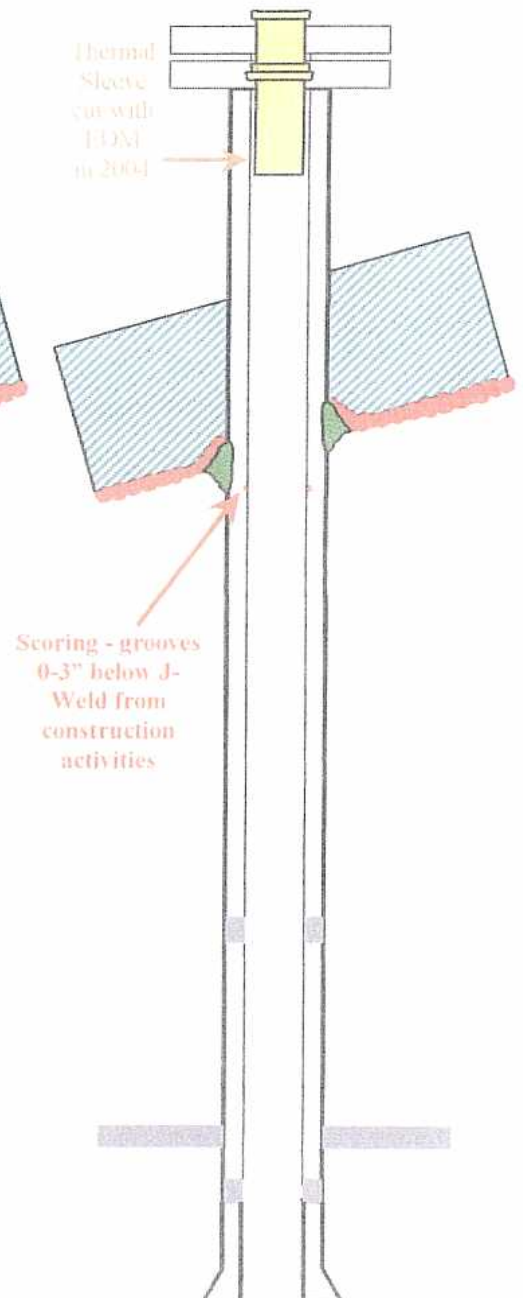
**Thermal Sleeve as designed**



**Thermal Sleeve cut in 1970 during construction**



**Thermal Sleeve cut in 2004 REFOUT for weld inspection**



In 1970 during construction testing, the fingers at the bottom of one of the Thermal Sleeves caught on the Control Rod Drive rack. A 20 foot long tool with a side grinder was lowered from the top of the Upper Assemblies and cut off the lower 4 inches of the sleeve. The cutter not only cut the sleeves, it bounced against and left grooves in the nozzles 0 - 3 inches below the J-Weld.

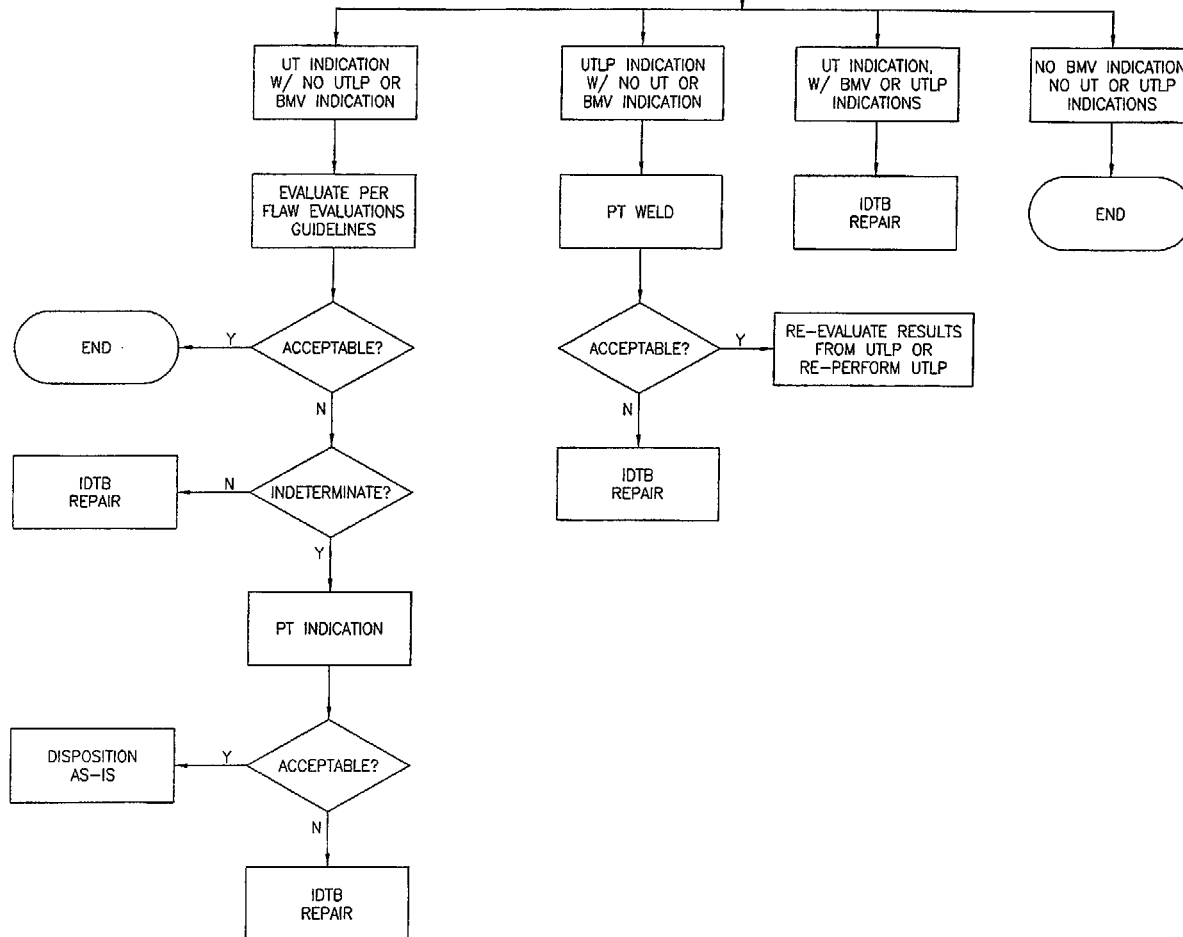
6035388 B ON DWG



REVISIONS

REV	DESCRIPTION	DATE	APPROVAL	M	F

UT & BMV EXAM



FILENAME: 6035388 DWG  
DISK No: EDOCS

CRDM EVALUATION  
LOGIC CHART

SCALE FULL DATE 9-14-04  
DWG NO. 6035388 B-0

THIS DRAWING/DOCUMENT IS THE PROPERTY OF FRAMATOME ANP, INC., AN AREVA AND SIEMENS COMPANY, AND IS LOANED UPON THE CONDITION THAT IT IS NOT TO BE REPRODUCED OR COPIED, IN WHOLE OR IN PART, OR USED FOR FURNISHING INFORMATION TO OTHERS, OR FOR ANY OTHER PURPOSE DETRIMENTAL TO THE INTEREST OF FRAMATOME ANP AND IS TO BE RETURNED UPON REQUEST. DO NOT SCALE - USE DIMENSIONS ONLY.

DWN BY: KM CARSON  
CHK'D BY: RP MAGGI  
PASSED BY: APP'D BY: MA SLOWAN

22159 (12/95)

# FLAW EVALUATION (SCORING) LOGIC DIAGRAM

