

Emergency Procedures Guidelines

Rick Wachowiak - GE
ESBWR Pre-application Meeting
October 12 & 13, 2004

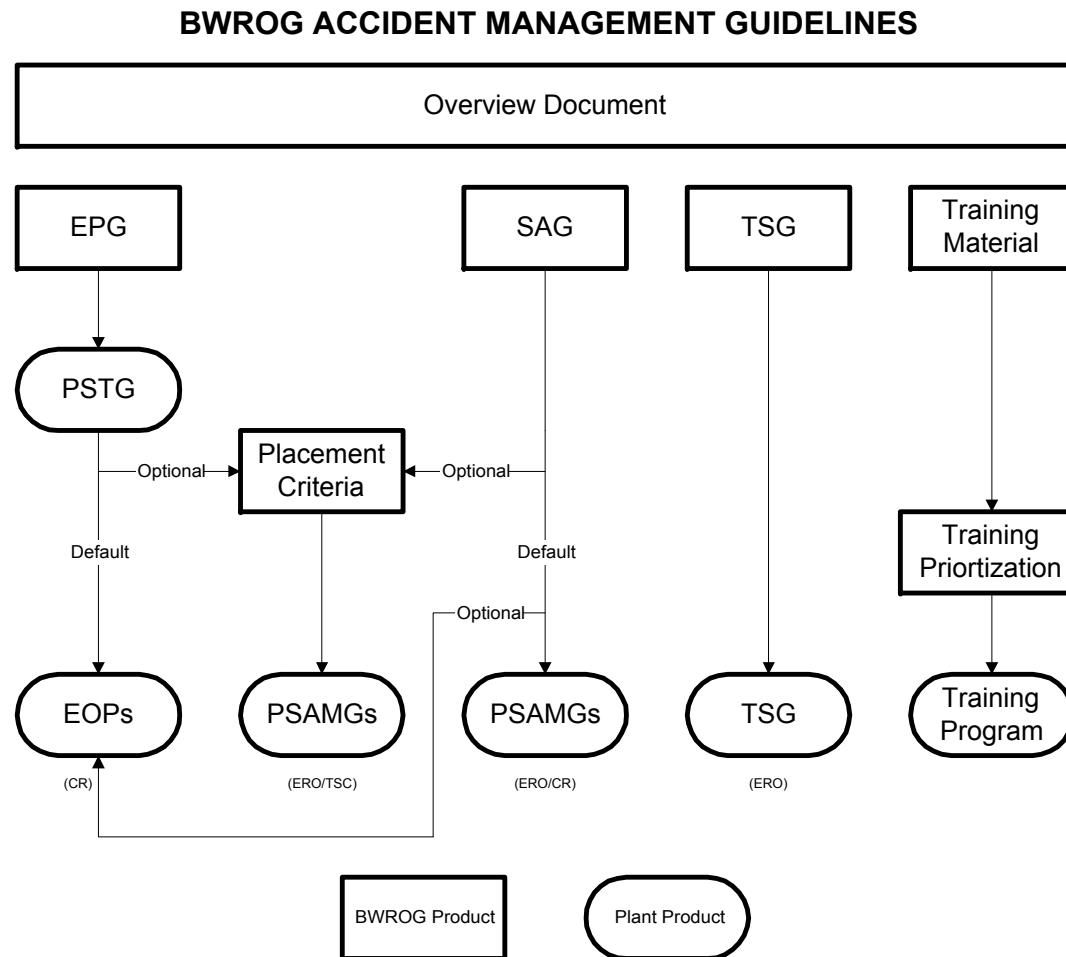
imagination at work



Applicability for Design Certification

- Development of Emergency Procedure Guidelines is outside the scope of certification
- Exception
 - ❖ Human reliability analysis in PRA
 - ❖ Can be accommodated using BWROG EPG / SAG revision 2

Accident Management Guideline Structure



EPG History

- EPG Revision 4 - 1987
 - SAG Revision 1 - 1997
 - SAG Revision 2 - 2002
-
- ✓ SAG contains EPG
 - ✓ Significant additions
 - Containment flooding strategies
 - Location of authority

Summary

- DCD does not contain ESBWR specific EPGs
- Human actions in PRA based on BWROG EPG/SAG revision 2