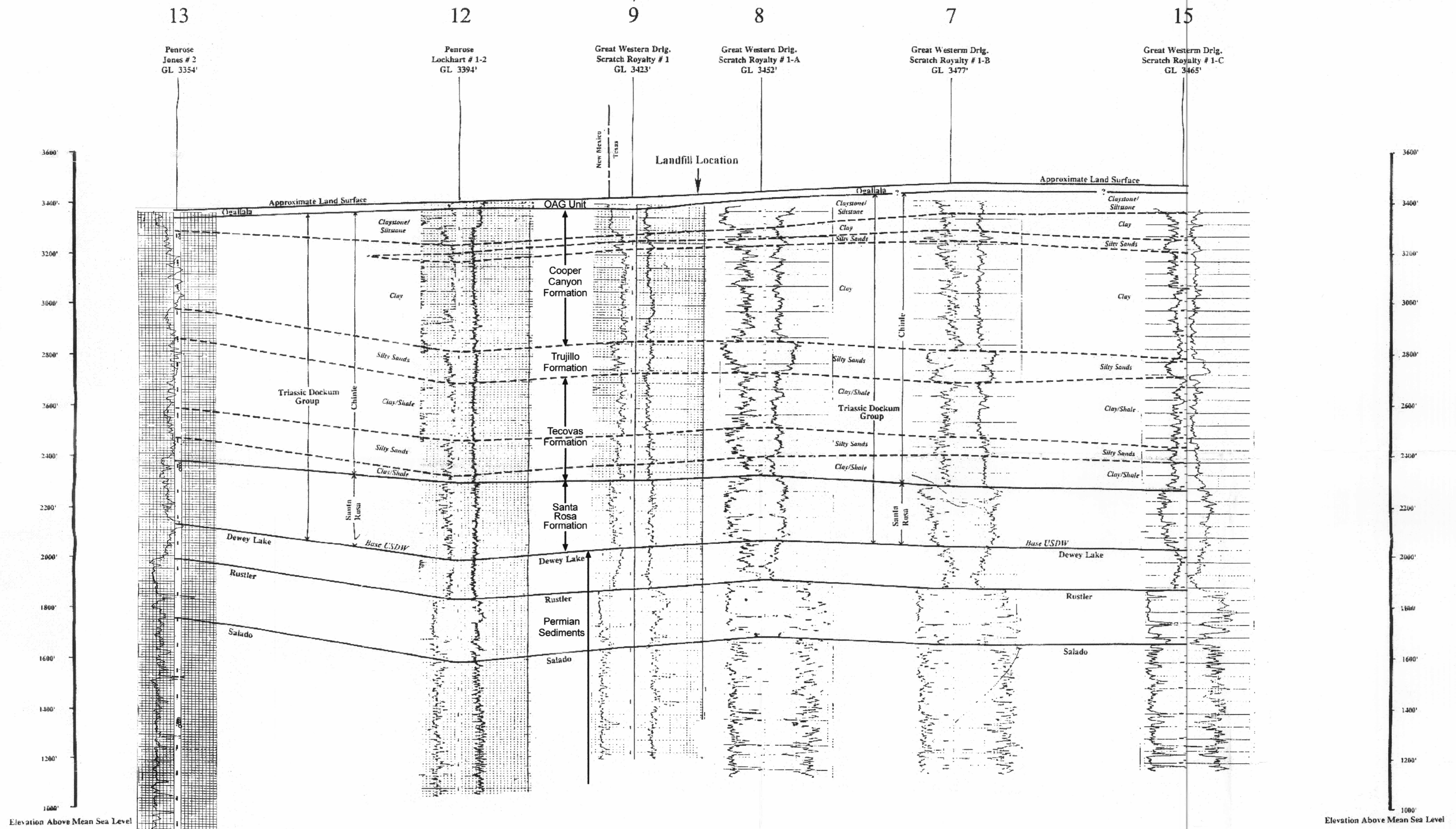


B

West-Southwest

B'

East-Northeast



1" = 2100'
1" = 1500'

Date: 02/06/04
File: WCS_BtoB'.fh11

INTERA INCORPORATED
ENGINEERING AND CONSULTING
9111A Research Blvd.
Austin, TX 78758

COOK-JOYCE INC.
ENGINEERING AND CONSULTING
818 WEST ELEVANTH
AUSTIN, TEXAS 78714-0003
TEL (512) 474-8087 FAX (512) 474-8483

Strike-Oriented
Stratigraphic
Cross Section
B - B'

Plate 6.2-3

Source: Modified from Terra Dynamics, 1993

D-03