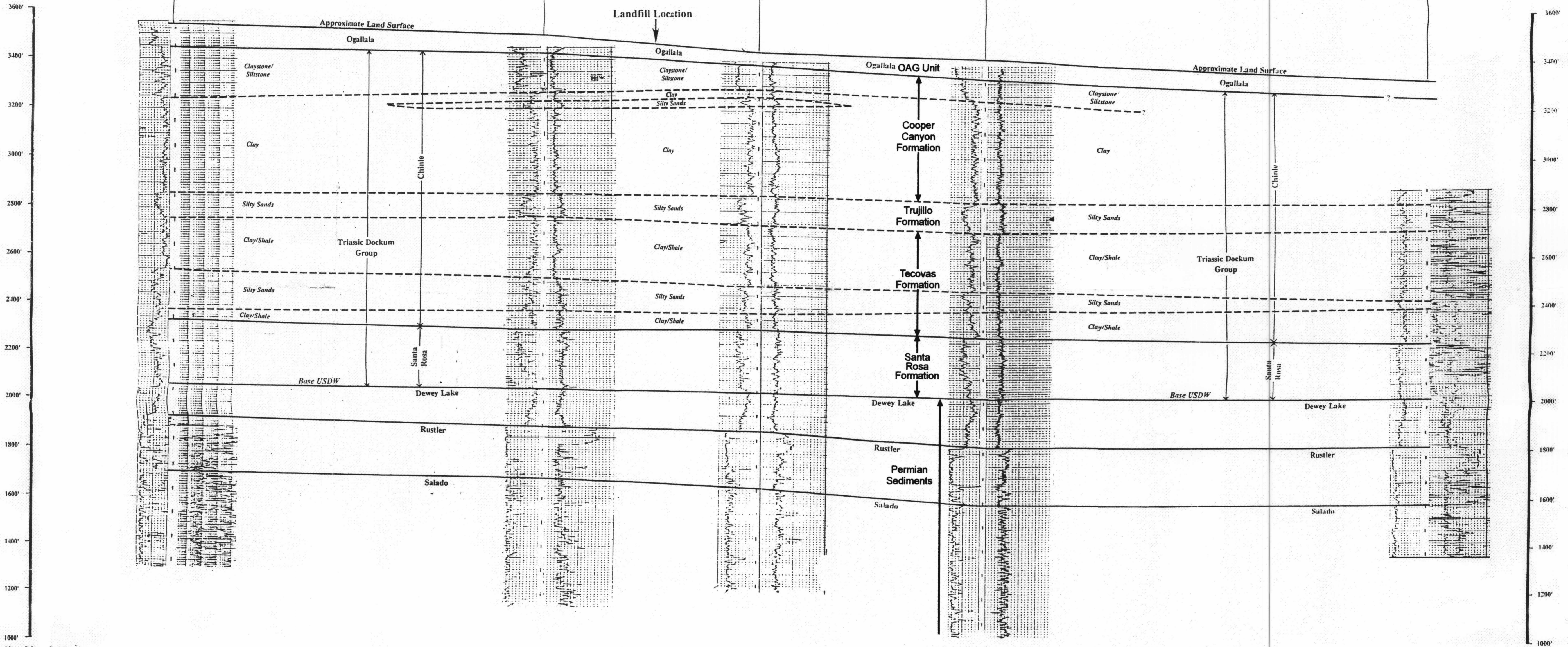


A North A' South

14 4 9 16 17

MGF Oil Corp. Littman # 1 GL 3544' Charles D. Sands Humble SIM # 1 GL 3493' Great Western Drlg. Scratch Royalty # 1 GL 3423' Penrose Lockhart # 1 GL 3406' Marshall Young Oil Co. H. O Sims Water Well GL 3373'



Elevation Above Mean Sea Level

1" = 200'
1" = 1500'

Date: 02/06/04
File: WCS_AtoA'.rh11
INTERA INTERA INCORPORATED
9111A Research Blvd.
Austin, TX 78758
COOK-JOYCE INC.
ENGINEERS AND CONSULTANTS
515 WEST BLENKHOFF
AUSTIN, TEXAS 78701-8000
(512) 474-8087 FAX (512) 474-8483

Dip-Oriented Stratigraphic Cross Section A - A'

Plate 6.2-2

Source: Modified from Terra Dynamics, 1993

D-02