



UNITED STATES  
NUCLEAR REGULATORY COMMISSION  
WASHINGTON, D.C. 20555-0001

September 7, 2004

MEMORANDUM TO: Docket File 52-007

FROM: Thomas Kenyon, Senior Project Manager *TJ Kenyon*  
Environmental Section  
License Renewal and Environmental Impacts Program  
Division of Regulatory Improvement Programs  
Office of Nuclear Reactor Regulation

SUBJECT: AVAILABILITY OF GEOGRAPHICAL INFORMATION SYSTEMS (GIS)  
FILES CONCERNING THE ENVIRONMENTAL REVIEW OF THE  
EXELON EARLY SITE PERMIT APPLICATION

The staff has 98 files that were developed for use with the GIS mapping program using publicly available information and information obtained from Exelon. These files were developed only for the staff's land use analysis. They are not in a format that is compatible with the ADAMS system, and do not lend themselves to being printed out easily (so that the paper copy can be scanned into ADAMS). Therefore, these files will not be entered into ADAMS, but will be made available to the parties in the Exelon ESP hearing upon request. A screen-shot listing of these files is attached.

Docket No. 52-007

Attachment: As stated

Corel WordPerfect  
File Edit View

WinZip - ElliottGIS.ZIP  
File Actions Options Help

New Open Favorites Add Extract View CheckOut Wizard

Name	Type	Modified	Size	Ratio	Packed	Path
125tBuAr.dbf	DBF File	05/17/2004 12:26 PM	48,530	89%	5,120	nrc response\
125tBuffer_IL_Lands.dbf	DBF File	05/17/2004 4:29 PM	10,706	93%	733	nrc response\
125tBuffer_IL_Lands.prj	PRJ File	05/17/2004 4:19 PM	450	36%	289	nrc response\
125tBuffer_IL_Lands.shp	SHP File	05/17/2004 4:29 PM	6,884	38%	4,299	nrc response\
125tBuffer_IL_Lands.shx	SHX File	05/17/2004 4:29 PM	228	49%	117	nrc response\
125tBuffer_NaturePres.dbf	DBF File	05/17/2004 4:22 PM	322	56%	142	nrc response\
125tBuffer_NaturePres.prj	PRJ File	05/17/2004 4:22 PM	450	36%	289	nrc response\
125tBuffer_NaturePres.shp	SHP File	05/17/2004 4:22 PM	100	76%	24	nrc response\
125tBuffer_NaturePres.shx	SHX File	05/17/2004 4:22 PM	100	76%	24	nrc response\
125tBuffer_of_TLines.dbf	DBF File	05/12/2004 12:36 PM	124	50%	62	nrc response\
125tBuffer_of_TLines.prj	PRJ File	05/12/2004 12:36 PM	450	36%	289	nrc response\
125tBuffer_of_TLines.sbn	SBN File	05/13/2004 7:58 AM	132	48%	68	nrc response\
125tBuffer_of_TLines.sbx	SBX File	05/13/2004 7:58 AM	116	48%	60	nrc response\
125tBuffer_of_TLines.shp	SHP File	05/13/2004 7:58 AM	9,276	33%	6,171	nrc response\
125tBuffer_of_TLines.shx	SHX File	05/13/2004 7:58 AM	108	46%	58	nrc response\
125tBufferintersect_16n_50milelanduse.dbf	DBF File	05/17/2004 12:16 PM	48,530	90%	4,988	nrc response\
125tBufferintersect_16n_50milelanduse.prj	PRJ File	05/15/2004 4:03 PM	450	36%	289	nrc response\
125tBufferintersect_16n_50milelanduse.shp	SHP File	05/17/2004 12:16 PM	69,564	62%	26,309	nrc response\
125tBufferintersect_16n_50milelanduse.shx	SHX File	05/17/2004 12:16 PM	3,044	56%	1,346	nrc response\
16N_50MileLandUse.dbf	DBF File	05/11/2004 1:29 PM	8,696,891	84%	1,354,...	nrc response\
16N_50MileLandUse.prj	PRJ File	05/11/2004 1:27 PM	450	36%	289	nrc response\
16N_50MileLandUse.sbn	SBN File	05/13/2004 7:58 AM	3,647,724	68%	1,166,...	nrc response\
16N_50MileLandUse.sbx	SBX File	05/13/2004 7:58 AM	92,708	52%	44,889	nrc response\
16N_50MileLandUse.shp	SHP File	05/13/2004 7:58 AM	103,819,624	44%	58,045,...	nrc response\
16N_50MileLandUse.shx	SHX File	05/13/2004 7:58 AM	3,313,164	59%	1,368,...	nrc response\
50_6_CombinedLNature.dbf	DBF File	05/17/2004 7:23 PM	379,586	96%	15,023	nrc response\
50_6_CombinedLNature.prj	PRJ File	05/17/2004 4:54 PM	450	36%	289	nrc response\
50_6_CombinedLNature.shp	SHP File	05/17/2004 7:23 PM	133,124	49%	67,894	nrc response\
50_6_CombinedLNature.shx	SHX File	05/17/2004 7:23 PM	3,492	57%	1,519	nrc response\
50_6_IL_Lands.dbf	DBF File	05/17/2004 4:31 PM	190,912	95%	8,723	nrc response\
50_6_IL_Lands.prj	PRJ File	05/17/2004 4:17 PM	450	36%	289	nrc response\
50_6_IL_Lands.shp	SHP File	05/17/2004 4:31 PM	103,364	45%	56,590	nrc response\
50_6_IL_Lands.shx	SHX File	05/17/2004 4:31 PM	2,420	55%	1,081	nrc response\

Selected 1 file, 3KB Total 98 files, 957,421KB

Document1 | \Nrc\_tree\ Ins | September | Pg 1 | Ln 1 | Pos 1 | Start | Corel WordPerfect... | GroupWise - Mail... | NRC Telephone D... | Exploring - D:\NR... | WinZip - Elliott... | 8:12 AM

Corel WordPerfect

WinZip - ElliottGIS.ZIP

File Edit View

File Actions Options Help

Arial



Name	Type	Modified	Size	Ratio	Packed	Path
50_6_NaturePres.dbf	DBF File	05/17/2004 4:23 PM	6,638	80%	1,296	nrc response\
50_6_NaturePres.prj	PRJ File	05/17/2004 4:21 PM	450	36%	289	nrc response\
50_6_NaturePres.shp	SHP File	05/17/2004 4:23 PM	11,700	30%	8,170	nrc response\
50_6_NaturePres.shx	SHX File	05/17/2004 4:23 PM	308	34%	202	nrc response\
50intersect_16n_50milelanduse.dbf	DBF File	05/17/2004 12:14 PM	43,898,250	89%	4,734,...	nrc response\
50intersect_16n_50milelanduse.prj	PRJ File	05/13/2004 7:57 AM	450	36%	289	nrc response\
50intersect_16n_50milelanduse.shp	SHP File	05/17/2004 12:14 PM	86,932,012	48%	45,429,...	nrc response\
50intersect_16n_50milelanduse.shx	SHX File	05/17/2004 12:14 PM	3,313,156	59%	1,368,...	nrc response\
50miArea.dbf	DBF File	05/17/2004 12:28 PM	43,898,250	89%	4,855,...	nrc response\
50miLandUse.dbf	DBF File	05/10/2004 3:18 PM	8,696,891	84%	1,354,...	nrc response\
50miLandUse.prj	PRJ File	05/10/2004 3:17 PM	450	36%	287	nrc response\
50miLandUse.sbn	SBN File	05/13/2004 7:59 AM	3,645,780	68%	1,152,...	nrc response\
50miLandUse.sbx	SBX File	05/13/2004 7:59 AM	90,732	51%	44,047	nrc response\
50miLandUse.shp	SHP File	05/13/2004 7:59 AM	103,819,624	63%	38,503,...	nrc response\
50miLandUse.shx	SHX File	05/13/2004 7:59 AM	3,313,164	59%	1,368,...	nrc response\
6intersect_16n_50milelanduse.dbf	DBF File	05/17/2004 12:15 PM	1,328,742	93%	88,156	nrc response\
6intersect_16n_50milelanduse.prj	PRJ File	05/14/2004 5:47 PM	450	36%	289	nrc response\
6intersect_16n_50milelanduse.shp	SHP File	05/17/2004 12:15 PM	1,593,748	54%	732,077	nrc response\
6intersect_16n_50milelanduse.shx	SHX File	05/17/2004 12:15 PM	61,884	59%	25,336	nrc response\
6miArea.dbf	DBF File	05/17/2004 12:27 PM	1,328,742	93%	89,577	nrc response\
Areas.mdb	Microsoft Acces...	08/10/2004 3:00 PM	34,123,776	75%	8,402,...	nrc response\
av32.apr	APR File	05/13/2004 7:53 AM	57,235	81%	11,125	nrc response\
landuse.dbf	DBF File	05/10/2004 2:04 PM	44,127,713	85%	6,656,...	nrc response\
Landuse.prj	PRJ File	05/10/2004 2:04 PM	450	36%	287	nrc response\
landuse.sbn	SBN File	05/13/2004 8:00 AM	17,577,516	67%	5,880,...	nrc response\
landuse.sbx	SBX File	05/13/2004 8:00 AM	325,676	51%	159,739	nrc response\
landuse.shp	SHP File	05/13/2004 8:00 AM	440,722,336	65%	156,15,...	nrc response\
landuse.shx	SHX File	05/13/2004 8:00 AM	16,810,620	59%	6,952,...	nrc response\
LandUseAreas.xls	Microsoft Excel ...	05/17/2004 3:11 PM	21,504	79%	4,495	nrc response\
MoreIntersections.mxd	MXD File	05/17/2004 7:23 PM	541,184	95%	24,473	nrc response\
NewStructures.dbf	DBF File	05/04/2004 5:14 PM	1,050	62%	400	nrc response\
NewStructures.xls	Microsoft Excel ...	05/04/2004 5:21 PM	18,944	85%	2,810	nrc response\
PropUnit2_50miRegion_Shape.dbf	DBF File	05/11/2004 1:03 PM	229	47%	121	nrc response\

Selected 1 file, 3KB Total 98 files, 957,421KB

Document1

\\Nrc\_tree\ Ins September Pg 2 Ln 1" Pos 1"

Start Corel WordPerfect

GroupWise - Mailb...

NRC Telephone D...

Exploring - D:\NR...

WinZip - Elliott...

8:12 AM

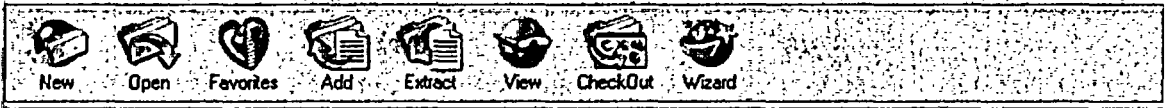
Corel WordPerfect

WinZip - ElliottGIS.ZIP

File Edit View

File Actions Options Help

Ariel



Name	Type	Modified	Size	Ratio	Packed	Path
PropUnit2_50miRegion_Shape.dbf	DBF File	05/11/2004 1:03 PM	229	47%	121	nrc response\
PropUnit2_50miRegion_Shape.prj	PRJ File	05/11/2004 1:03 PM	450	36%	289	nrc response\
PropUnit2_50miRegion_Shape.sbn	SBN File	05/13/2004 8:00 AM	132	48%	68	nrc response\
PropUnit2_50miRegion_Shape.sbx	SBX File	05/13/2004 8:00 AM	116	48%	60	nrc response\
PropUnit2_50miRegion_Shape.shp	SHP File	05/13/2004 8:00 AM	1,772	10%	1,594	nrc response\
PropUnit2_50miRegion_Shape.shx	SHX File	05/13/2004 8:00 AM	108	46%	58	nrc response\
PropUnit2_50miRegion_w6miVicinity_Shap...	DBF File	05/12/2004 1:26 PM	326	50%	162	nrc response\
PropUnit2_50miRegion_w6miVicinity_Shap...	PRJ File	05/12/2004 1:26 PM	450	36%	289	nrc response\
PropUnit2_50miRegion_w6miVicinity_Shap...	SBN File	05/13/2004 8:00 AM	140	47%	74	nrc response\
PropUnit2_50miRegion_w6miVicinity_Shap...	SBX File	05/13/2004 8:00 AM	116	48%	60	nrc response\
PropUnit2_50miRegion_w6miVicinity_Shap...	SHP File	05/13/2004 8:00 AM	5,064	34%	3,325	nrc response\
PropUnit2_50miRegion_w6miVicinity_Shap...	SHX File	05/13/2004 8:00 AM	116	44%	65	nrc response\
PropUnit2_6miVicinity_Shape.dbf	DBF File	05/11/2004 1:02 PM	229	48%	120	nrc response\
PropUnit2_6miVicinity_Shape.prj	PRJ File	05/11/2004 1:02 PM	450	36%	289	nrc response\
PropUnit2_6miVicinity_Shape.sbn	SBN File	05/13/2004 8:01 AM	132	48%	68	nrc response\
PropUnit2_6miVicinity_Shape.sbx	SBX File	05/13/2004 8:01 AM	116	48%	60	nrc response\
PropUnit2_6miVicinity_Shape.shp	SHP File	05/13/2004 8:01 AM	1,772	14%	1,529	nrc response\
PropUnit2_6miVicinity_Shape.shx	SHX File	05/13/2004 8:01 AM	108	48%	56	nrc response\
Substations.dbf	DBF File	05/10/2004 12:27 PM	212	72%	59	nrc response\
Substations.prj	PRJ File	05/10/2004 10:46 AM	450	36%	289	nrc response\
Substations.sbn	SBN File	05/13/2004 8:01 AM	164	49%	83	nrc response\
Substations.sbx	SBX File	05/13/2004 8:01 AM	124	47%	66	nrc response\
Substations.shp	SHP File	05/13/2004 8:01 AM	468	36%	300	nrc response\
Substations.shx	SHX File	05/13/2004 8:01 AM	116	46%	63	nrc response\
TLines.dbf	DBF File	05/10/2004 12:26 PM	282	62%	106	nrc response\
TLines.mdb	Microsoft Acces...	05/10/2004 12:30 PM	782,336	97%	25,004	nrc response\
TLines.mxd	MXD File	05/07/2004 5:24 PM	211,456	96%	9,488	nrc response\
TLines.prj	PRJ File	05/07/2004 10:47 PM	450	36%	289	nrc response\
TLines.sbn	SBN File	05/13/2004 8:01 AM	140	47%	74	nrc response\
TLines.sbx	SBX File	05/13/2004 8:01 AM	116	48%	60	nrc response\
TLines.shp	SHP File	05/13/2004 8:01 AM	788	24%	598	nrc response\
TLines.shx	SHX File	05/13/2004 8:01 AM	116	47%	62	nrc response\
TLines2.mxd	MXD File	05/10/2004 5:24 PM	2,536,448	95%	132,485	nrc response\

Selected 1 file, 229 bytes | Total 98 files, 957,421KB

Document1

\\nrc\_tree\ Ins September Pg 3 Ln 1" Pos 1"

Start Corel WordPerfect

GroupWise - Mail

NRC Telephone D

Exploring - D:\NR

WinZip - Elliott

8:13 AM