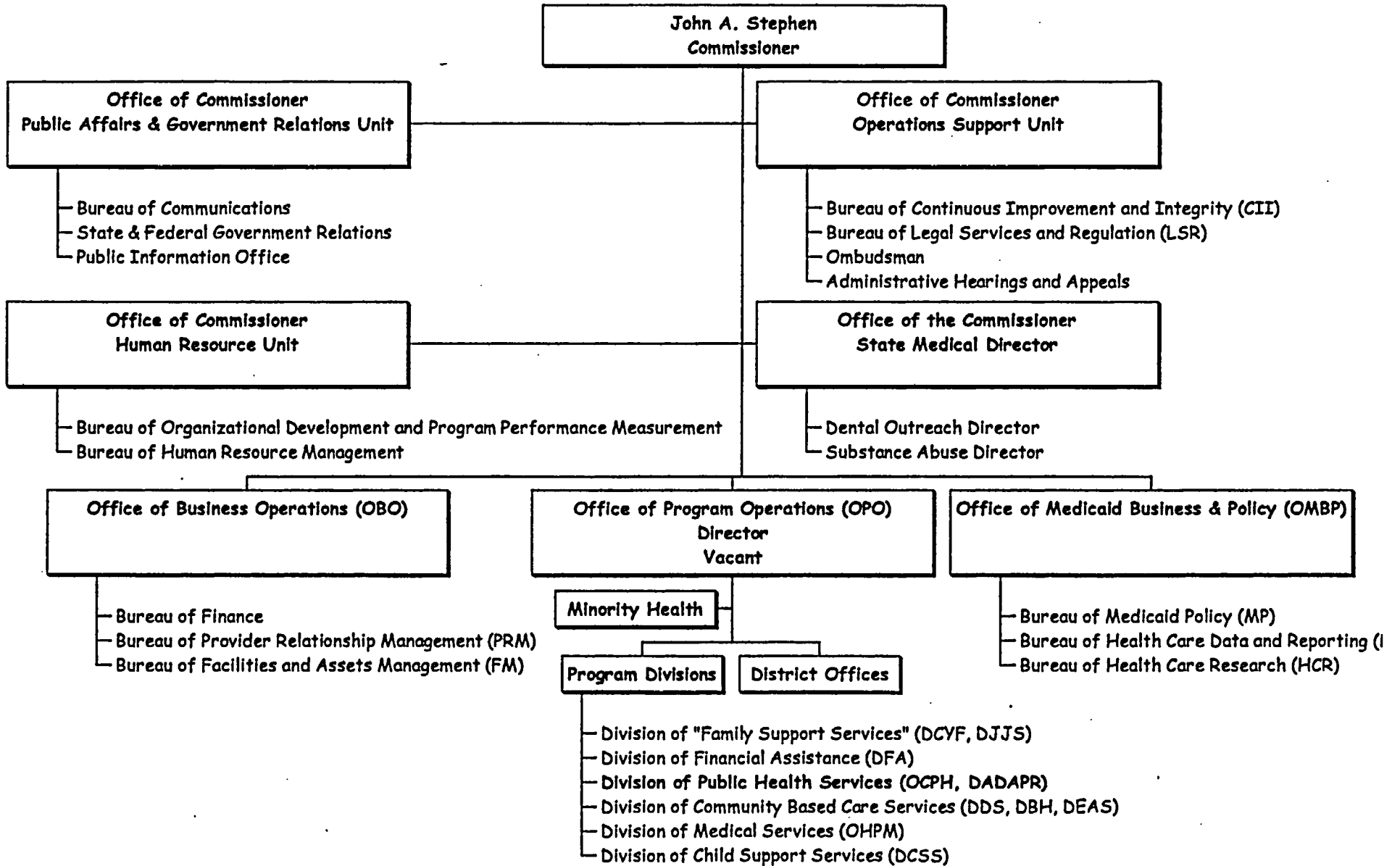
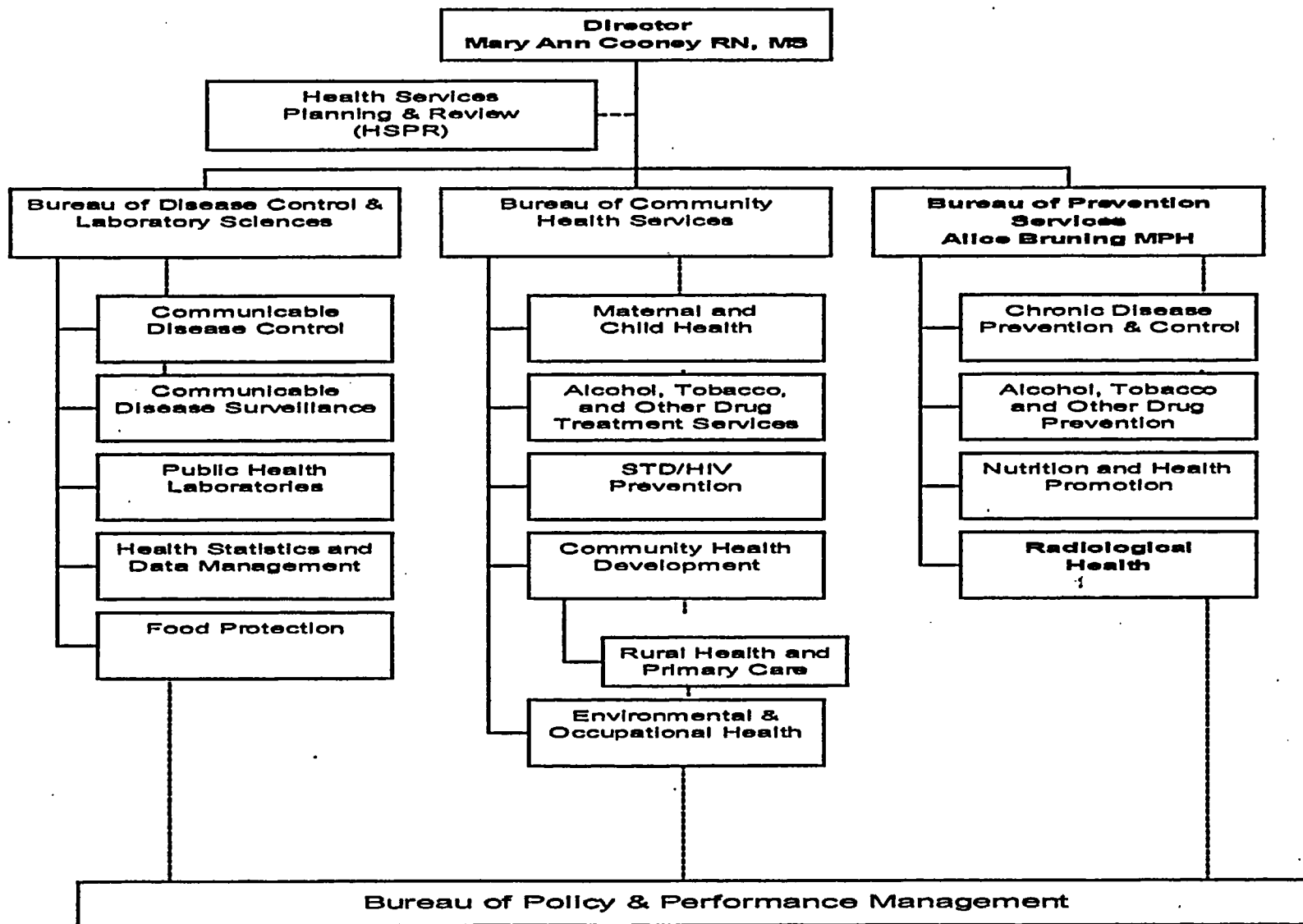


Department of Health and Human Services



Organizational Chart A

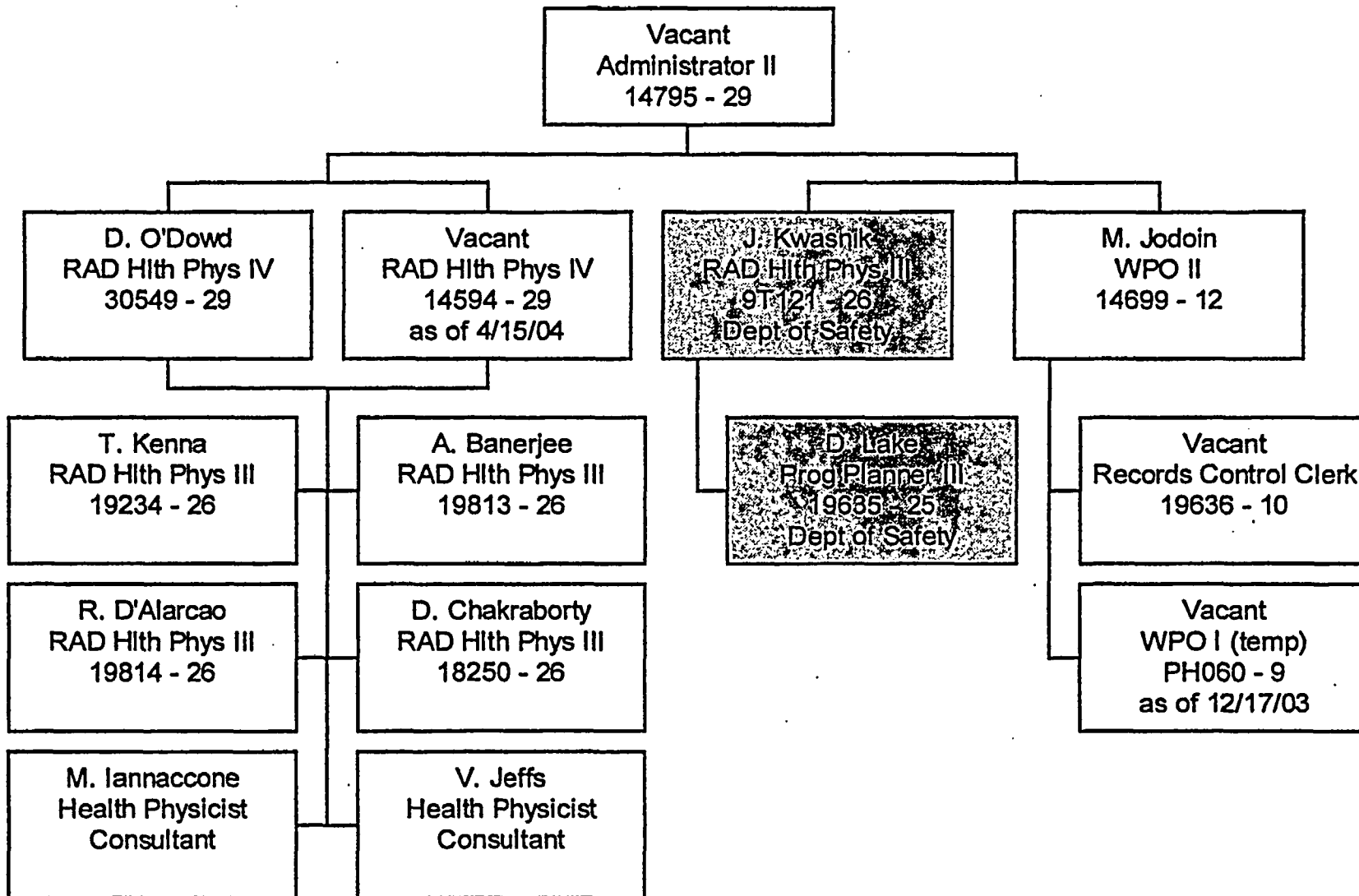
Division of Public Health Services



6/17/2004

Organizational Chart B

**Division of Public Health Services
Radiological Health Section
Current - 06-15-04**



*Positions in gray currently with Department of Safety. In process to be transferred back July 1, 2004, pending Fiscal Committee and Governor and Council Action