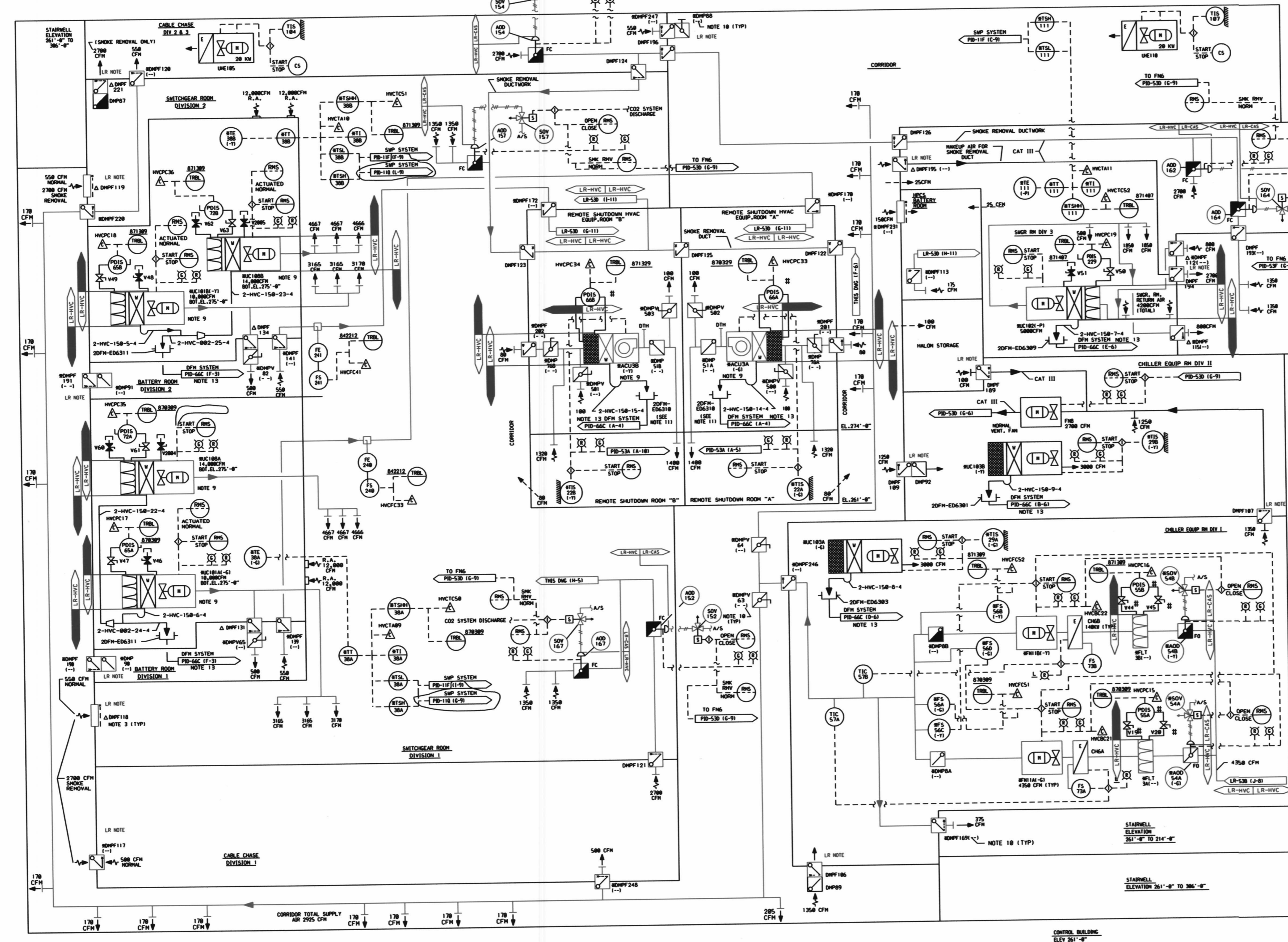


0-3E3-0

MARK NUMBER	VALVE DESCRIPTION	SIZE	NO. OF VALVES
V19,20,44,45	BY FILTER MANUFACTURER	1/4"	4
V46,47,48,49,50	BY CONTROLS	1/4"	12
V51,52,53,54,55			



LR NOTE:  
TYPICAL FLAGGING FOR NSR FIRE DAMPERS

- NOTES:
1. ALL INSTRUMENT AND EQUIPMENT NUMBERS TO BE PREFIXED WITH "2FV-" EXCEPT WHERE A DIFFERENT PREFIX IS SHOWN. AN ASTERISK (\*) WILL REPLACE THE DASH (-) IN THE PREFIX FOR EQUIPMENT OR INSTRUMENTS WHICH ARE PART OF NUCLEAR SAFETY FEATURES SYSTEM.
  2. DASHED LINES REPRESENT INDUCED AIR PASSAGES.
  3. THE SYMBOL (A) INDICATES THAT FIRE DAMPER HAS A FUSIBLE LINK AND ALSO A MECHANICAL PRESSURE TRIP MECHANISM WHICH IS INTERLOCKED WITH THE CO2 FIRE PROTECTION SYSTEM. (FIRE DAMPER REGULATOR SET POINTS SHALL BE IN THE RANGE OF 15 - 125 PSI.)
  4. FOR SERVICE WATER PIPING TO UNIT COOLER COILS, SEE PID-11.
  5. FOR CHILLED WATER PIPING TO AIR CONDITIONING UNIT COILS, SEE PID-33A.
  6. DRAIN FROM UNIT COOLER AND AIR CONDITIONING UNITS SHALL BE DISCHARGED TO RESE. BUILDING FLOOR AND EQUIP DRAINING, SEE PID-66.
  7. BATTERY ROOMS MAINTAINED UNDER A SLIGHTLY NEGATIVE PRESSURE.
  8. ALL DUCTWORK IS GA CAT 3 EXCEPT WHERE NOTED.
  9. RUC180A, 181B, 181C, 180B AND RUC180A AND B PHYSICALLY LOCATED ABOVE CEILING OF BATTERY ROOM AND REMOTE SHUTDOWN ROOM.
  10. MARK NUMBERS PREFIXED WITH AN ASTERISK (\*) ALSO HAVE THE OVERCODE SUFFIX "1-1" UNLESS OTHERWISE SHOWN.
  11. EQUIPMENT DRAIN 20FH-ED631B IS LOCATED IN THE CORRIDOR OUTSIDE OF REMOTE SHUTDOWN EQUIPMENT ROOM.
  12. THE SYMBOL (S) INDICATES EQUIPMENT SUPPLIED BY FILTER MANUFACTURER.
  13. NO FLAG SHOWN ON CORRESPONDING DOCUMENT. COORDINATES PROVIDE INTERFACE LOCATION.

LR NOTE:  
PLEASE REFER TO DRAWING LR-000 SHEETS 2A THROUGH 2F FOR LR BOUNDARY DRAWING NOTES, SYMBOLS, AND ACRONYMS.

SAFETY RELATED  
QUALITY RELATED  
NON-SAFETY RELATED  
(REF. SAR FIG. 9.4-1e)

Constellation Energy Group  
NINE MILE POINT NUCLEAR STATION UNIT 2 - SCRIBA, N.Y.

PIPING & INSTRUMENTATION DIAGRAM  
CONTROL BUILDING VENTILATION AND AIR CONDITIONING

SCALE: NONE DRAWING NO: LR-53E-0

REV	DATE	DESCRIPTION OF REVISION	M.O.	DFT	DES	CHND	ENG	REV	DATE	DESCRIPTION OF REVISION	M.O.	DFT	DES	CHND	ENG	REV	DATE	DESCRIPTION OF REVISION	M.O.	DFT	DES	CHND	ENG

193