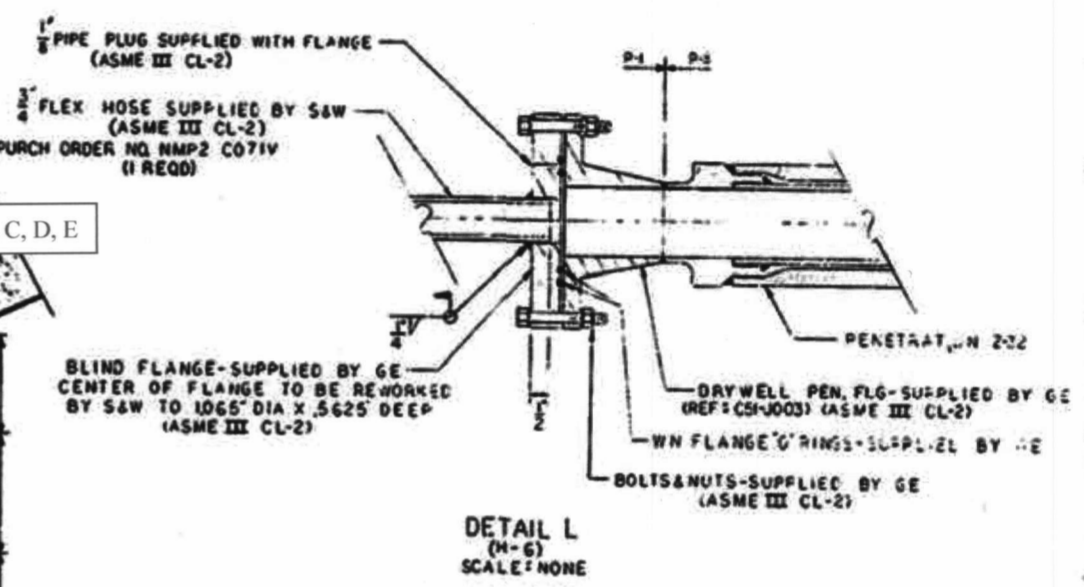
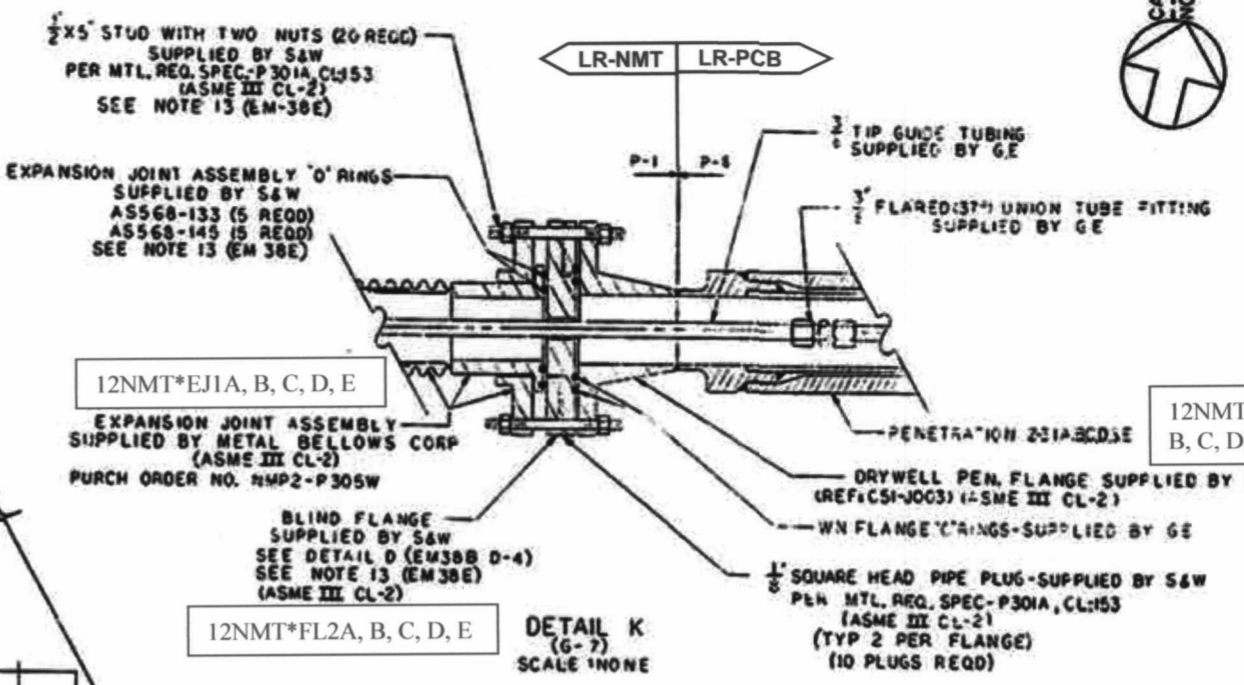


PLAN EL. 250'-0"
SCALE 1/8"=1'-0"



Guide Tube Valve Assemblies (5 Total) shown subject to Aging Management Review (AMR) consist of the following components:
2NMS*SOVIA, B, C, D, E
2NMS*VEXIA, B, C, D, E

- NOTES:
1. SCALE AS NOTED
2. SEE DRAWING EM-38E FOR GENERAL NOTES.
LEGEND REFERENCE DRAWINGS AND SPECIFICATIONS

DISPOSAL CASK
25' MIN. SPACE REQUIRED FOR REMOVAL OF REEL (TYR)

EQUIPMENT PAD EL. 251'-5"

4'-5"
4'-5"
5'-0"
5'-3"
4'-6"
6'-2"
2'-5'-0"

DRIVE MECHANISM (TYR)

5' MIN. REQUIRED FOR CRANK REMOVAL (TYR)

5' MIN. REQUIRED FOR CABLE AND PLUG REMOVAL FROM ACCESS TABLE (TYR)

LR NOTE:
PLEASE REFER TO DRAWING LR-18000-C SHEETS 1 AND 2 FOR
LR BOUNDARY DRAWING NOTES, SYMBOLS, AND ACRONYMS.

APPROVED: [Signature]
LICENSED PROFESSIONAL ENGINEER NO. 057623
STATE OF NEW YORK
ALL RIGHTS RESERVED BY LICENSED PROFESSIONAL ENGINEER IN N.Y.
NUCLEAR SAFETY RELATED
QA CAT I, II

ARRGT. NEUTRON MONITORING Sys.
REACTOR BUILDING
NINE MILE POINT NUCLEAR STATION - UNIT 2
NIAGARA MOHAWK POWER CORPORATION
SPONK & WEBSTER ENGINEERING CORPORATION
CANTON, N.Y.
DRAWING NUMBER: LR-12177-EM-38A-0
DESIGNED BY: S. ANSELMO
CHECKED BY: S. ANSELMO
PLANNED BY: S. CENTRONE

THE INFORMATION ON THIS DRAWING MAY NOT BE COPIED OR USED FOR OTHER THAN THE CONSTRUCTION, MAINTENANCE OR REPAIR OF THE PLANT FACILITY DESCRIBED IN THE TITLE BLOCK.