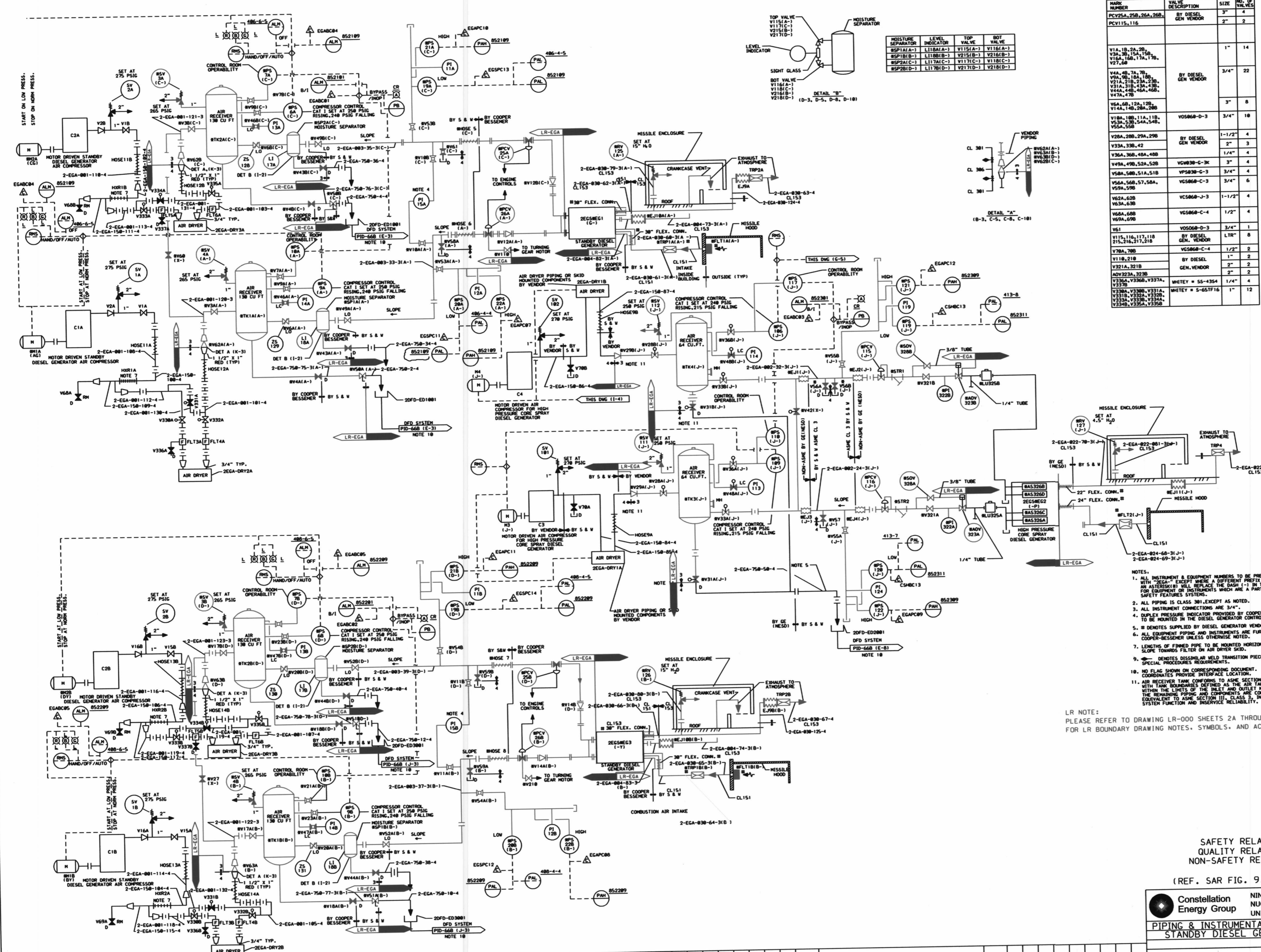


LR-104A-0



MOISTURE SEPARATOR	LEVEL INDICATOR	TOP VALVE	ROT VALVE
MSPIA-1	LI181A-1	V115A-1	V116A-1
MSPIB-1	LI181B-1	V215B-1	V216B-1
MSPIA-2	LI181C-1	V113C-1	V114C-1
MSPIB-2	LI181D-1	V217D-1	V218D-1

NAME	VALVE DESCRIPTION	SIZE	NO. OF VALVES
PCV25A, 25B, 26A, 26B	BY DIESEL GEN VENDOR	3"	4
PCV115, 116		2"	2
V1A, 1B, 2A, 2B		1"	14
V2A, 2B, 1C, 1D, 1E, 1F, 1G, 1H, 1I, 1J, 1K, 1L, 1M, 1N, 1O, 1P, 1Q, 1R, 1S, 1T, 1U, 1V, 1W, 1X, 1Y, 1Z	BY DIESEL GEN VENDOR	3/4"	22
V6A, 6B, 12A, 12B, 14A, 14B, 28A, 28B		3"	8
V18A, 18B, 11A, 11B, V24A, 24B, 24C, 24D, V55A, 55B	VOS06B-D-3	3/4"	18
V28A, 28B, 29A, 29B	BY DIESEL GEN VENDOR	1-1/2"	4
V33A, 33B, 42		2"	3
V36A, 36B, 40A, 40B		1-7/8"	4
V49A, 49B, 52A, 52B	VCS030-C-3K	3"	4
V58A, 58B, 51A, 51B	VP5030-C-3	3/4"	4
V56A, 56B, 57, 58A, V59A, 59B	VCS06B-C-3	3/4"	6
V62A, 62B	VCS06B-J-3	1-1/2"	4
V64A, 64B	VCS06B-C-4	1/2"	4
V61	VOS06B-D-3	3/4"	1
V115, 116, 117, 118	BY DIESEL GEN. VENDOR	LTR"	8
V78A, 78B	VCS06B-C-4	1-1/2"	2
V118, 218	BY DIESEL GEN. VENDOR	2"	2
V321A, 321B		2"	2
ADV323A, 323B		2"	2
V336A, V336B, V337A, V337B	WHITE W 55-4354	1-7/8"	4
V338A, V338B, V331A, V331B, V332A, V332B, V333A, V333B, V334A, V334B, V335A, V335B	WHITE W 5-65TF16	1"	12

- NOTES:
1. ALL INSTRUMENT & EQUIPMENT NUMBERS TO BE PREFIXED WITH "EQA" EXCEPT WHERE A DIFFERENT PREFIX IS SHOWN. AN APOSTROPHED INSTRUMENT NUMBER SHALL BE USED FOR EQUIPMENT OR INSTRUMENTS WHICH ARE A PART OF NUCLEAR SAFETY FEATURES SYSTEMS.
 2. ALL PIPING IS CLASS 301, EXCEPT AS NOTED.
 3. ALL INSTRUMENT CONNECTIONS ARE 3/4".
 4. DUPLEX PRESSURE INDICATOR PROVIDED BY COOPER-BESSEMER TO BE MOUNTED IN THE DIESEL GENERATOR CONTROL PANEL.
 5. # DENOTES SUPPLIED BY DIESEL GENERATOR VENDOR.
 6. ALL EQUIPMENT PIPING AND INSTRUMENTS ARE FURNISHED BY COOPER-BESSEMER UNLESS OTHERWISE NOTED.
 7. LENGTHS OF FINNED PIPE TO BE MOUNTED HORIZONTALLY. SLOPE TOWARDS FILTER ON AIR DRYER SKID.
 8. # DENOTES DISASSEMBLY WELD TRANSITION PIECE AND/OR SPECIAL PROCEDURES REQUIREMENTS.
 9. NO FLAG SHOWN ON CORRESPONDING DOCUMENT. COORDINATES PROVIDE INTERFACE LOCATION.
 10. AIR RECEIVER TANK CONFORMS TO ASME SECTION III, CLASS 3, WITH TANK BOUNDARIES DEFINED AS THE AIR TANK ASSEMBLY. WITHIN THE LIMITS OF THE INLET AND OUTLET NOZZLES, THE REMAINING AIR RECEIVER COMPONENTS ARE CONSIDERED EQUIVALENT TO ASME SECTION III, CLASS 3, IN TERMS OF SYSTEM FUNCTION AND INSERVICE RELIABILITY.

LR NOTE: PLEASE REFER TO DRAWING LR-000 SHEETS 2A THROUGH 2F FOR LR BOUNDARY DRAWING NOTES, SYMBOLS, AND ACRONYMS.

SAFETY RELATED
QUALITY RELATED
NON-SAFETY RELATED

(REF. SAR FIG. 9.5-400)

Constellation Energy Group
NINE MILE POINT NUCLEAR STATION UNIT 2 - SCRIBA, N.Y.
PIPING & INSTRUMENTATION DIAGRAM
STANDBY DIESEL GEN SYSTEM

SCALE: NONE DRAWING NO: LR-104A-0

215