

MARK NUMBER	VALVE DESCRIPTION	SIZE	NO. OF VALVES
V5, 6, 7, 8	BY MFC	1/4"	8
V9, 10, 11, 12	BY MFC	1/4"	8
V23	VCM815-D-4K	8	1
V26, 27	BY MFC	1/4"	2
RSOV235	VDS158-WB-20	3/4"	1
V30	VDS868-D-4	3/4"	1
V37	BY MFC	1"	1

LR NOTE:
PLEASE REFER TO DRAWING LR-000 SHEETS 2A THROUGH 2F FOR LR BOUNDARY DRAWING NOTES, SYMBOLS, AND ACRONYMS.

LINE LEGEND
 AIR SUPPLY (QA CAT II EXCEPT AS NOTED)
 AREA EXHAUST (QA CAT II)
 AREA EXHAUST/RETURN (QA CAT I)
 RECIRCULATED AIR (QA CAT I)

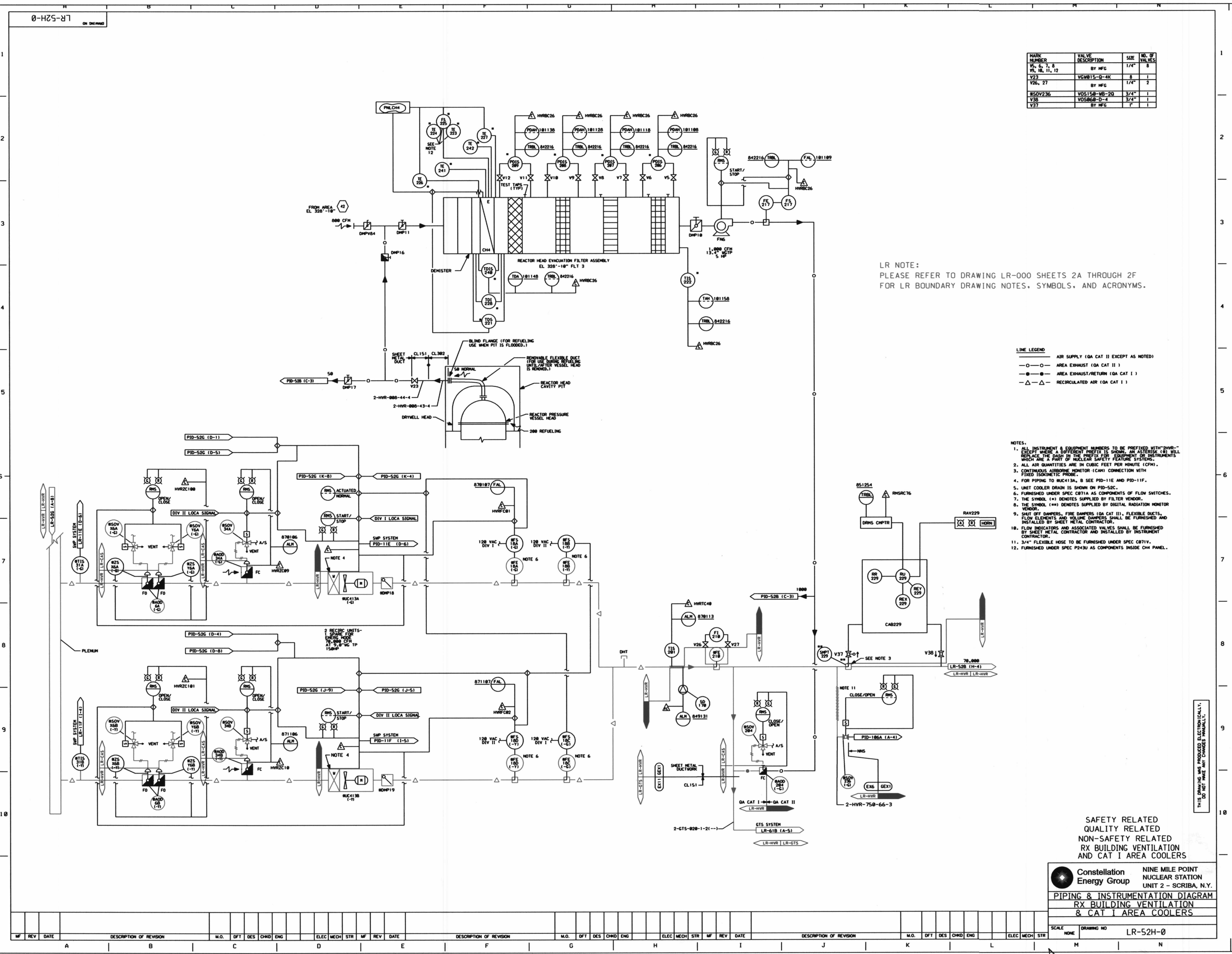
- NOTES:
1. ALL INSTRUMENT & EQUIPMENT NUMBERS TO BE PREFIXED WITH "2HR-" EXCEPT WHERE A DIFFERENT PREFIX IS SHOWN. AN "X" PREFIX (X) WILL REPLACE THE DASH IN THE PREFIX FOR EQUIPMENT OR INSTRUMENTS WHICH ARE A PART OF NUCLEAR SAFETY FEATURE SYSTEMS.
 2. ALL AIR QUANTITIES ARE IN CUBIC FEET PER MINUTE (CFM).
 3. CONTINUOUS AIRBORNE MONITOR (CAM) CONNECTION WITH FIRED ISOMETRIC PROBE.
 4. FOR PIPING TO RUC13A, B SEE PID-11E AND PID-11F.
 5. UNIT COOLER DRAIN IS SHOWN ON PID-52C.
 6. FURNISHED UNDER SPEC C871A AS COMPONENTS OF FLOW SWITCHES.
 7. THE SYMBOL (+) DENOTES SUPPLIED BY FILTER VENDOR.
 8. THE SYMBOL (**) DENOTES SUPPLIED BY DIGITAL RADIATION MONITOR VENDOR.
 9. SHUT OFF DAMPERS, FIRE DAMPERS (QA CAT III), FLEXIBLE DUCTS, FLOW ELEMENTS AND VOLUME DAMPERS SHALL BE FURNISHED AND INSTALLED BY SHEET METAL CONTRACTOR.
 10. FLOW INDICATORS AND ASSOCIATED VALVES SHALL BE FURNISHED BY SHEET METAL CONTRACTOR AND INSTALLED BY INSTRUMENT CONTRACTOR.
 11. 3/4" FLEXIBLE HOSE TO BE FURNISHED UNDER SPEC C871V.
 12. FURNISHED UNDER SPEC P243J AS COMPONENTS INSIDE CH PANEL.

THIS DRAWING WAS PRODUCED ELECTRONICALLY. DO NOT MAKE ANY CHANGES MANUALLY.

SAFETY RELATED
 QUALITY RELATED
 NON-SAFETY RELATED
 RX BUILDING VENTILATION
 AND CAT I AREA COOLERS

Constellation Energy Group
 NINE MILE POINT NUCLEAR STATION
 UNIT 2 - SCRIBA, N.Y.
 PIPING & INSTRUMENTATION DIAGRAM
 RX BUILDING VENTILATION
 & CAT I AREA COOLERS

SCALE: NONE DRAWING NO: LR-52H-0



188