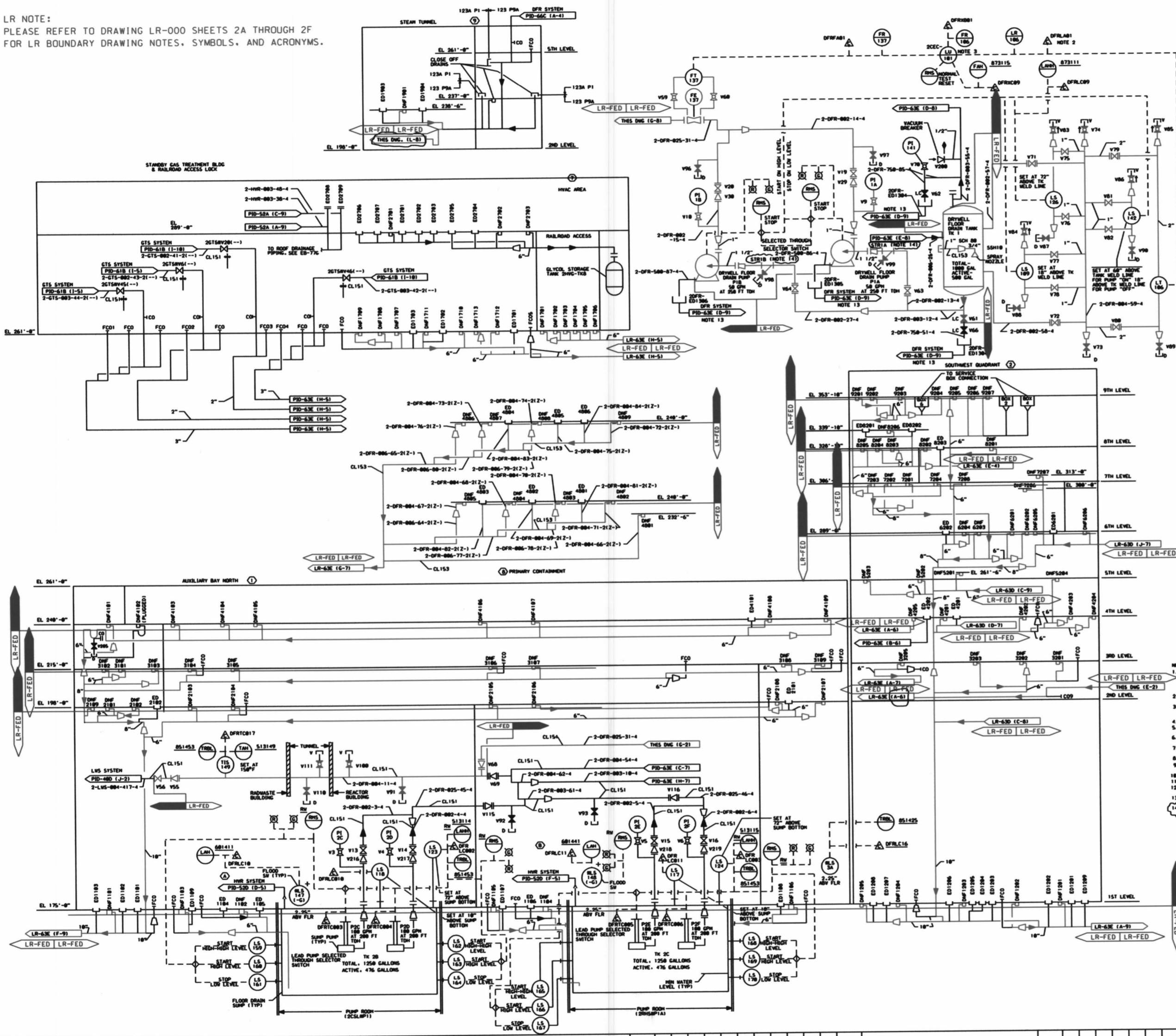
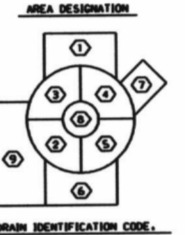
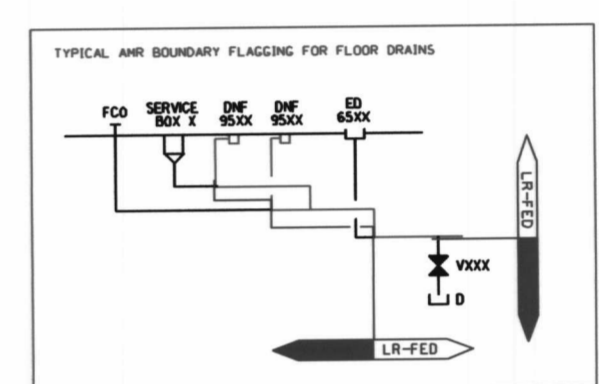


0-CE9-27

LR NOTE:
PLEASE REFER TO DRAWING LR-000 SHEETS 2A THROUGH 2F
FOR LR BOUNDARY DRAWING NOTES, SYMBOLS, AND ACRONYMS.



ITEM NUMBER	ITEM DESCRIPTION	SIZE	NO. OF VALVES
V111, V112, V113, V114, V115, V116, V117, V118, V119	VOTRAN-B-4	3/4"	16
V112, V114, V115, V119, V120, V121	VOPRIS-F-4B	2"	12
V20, V21, V22, V23, V24, V25, V26, V27, V28, V29, V30	VOPRIS-F-4	2"	3
V20, V21, V22, V23, V24, V25, V26, V27, V28, V29, V30	VOPRIS-F-4	2"	3
V61, V62, V63, V64, V65, V66, V67, V68, V69, V70, V71, V72, V73, V74, V75, V76, V77, V78, V79, V80, V81, V82	VOTRAN-B-4	3/4"	16
V75, V76, V77, V78, V81, V82	VOTRAN-B-4	1"	6
V89B	VSMB-C-4	1/2"	1
V89B	VSMB-C-4	3/4"	1
V116, V117, V118, V119	VOPRIS-F-4F	2"	4



AREA DESIGNATION	AREA DESCRIPTION
1	AUXILIARY BAY NORTH
2	SOUTHWEST QUADRANT
3	NORTHEAST QUADRANT
4	NORTHWEST QUADRANT
5	SOUTHEAST QUADRANT
6	AUXILIARY BAY SOUTH
7	STOMBY GAS TREATMENT
8	PRIMARY CONTAINMENT
9	STEAM TUNNEL

- NOTES:
- 1. ALL INSTRUMENT AND EQUIPMENT NUMBERS TO BE PROVIDED WITH "000" SUFFIX UNLESS OTHERWISE NOTED.
 - 2. ALL INSTRUMENTS AND EQUIPMENT TO BE PROVIDED WITH "000" SUFFIX UNLESS OTHERWISE NOTED.
 - 3. CAPTURE TO GENERATE ALARM ON LOW-LEVEL IN THE DRAIN SYSTEM.
 - 4. DRAIN SYSTEM IS A PROGRAMMABLE CONTROLLER WHICH IS COMMON TO THE ENTIRE FLOOR DRAIN SYSTEM AND THE DRAINAGE EQUIPMENT.
 - 5. ALL PIPING IS CLASS 123 UNLESS OTHERWISE NOTED.
 - 6. ALL PIPING AND EQUIPMENT DRAINS AND DRAIN LINES ARE TO BE SELF-VENTING AND SIZED THROUGHOUT TO 1" FITTINGS.
 - 7. SLOPE ALL DRAIN LINES 1/16" PER FT. MINIMUM.
 - 8. TO SUMP.
 - 9. ALL WELDS, VENT & DRAIN CONNECTIONS SHALL BE 3/4".
 - 10. - INDICATES INSTRUMENTS LOCATED AWAY FROM TANK OR SUMP.
 - 11. - INDICATES DISSIPABLE WELD AND/OR SPECIAL WELD PROCEDURE.
 - 12. - TO PLANNING AND/OR CORROSION PROTECTION.
 - 13. - TO PROVIDE PROTECTIVE INTERFERENCE LOCATION.
 - 14. - COMPENSATOR AND OTHER STRAINING DEVICES SHOULD BE PERMANENTLY INSTALLED DURING ALL PHASES OF PLANT OPERATION.

- LEGEND:
- (P) PUMP HEAD (EQUIPMENT)
 - (V) PUMP HEAD (DRAINAGE)
 - (L) LINE LEADER
 - (D) GRAVITY DRAIN LINES
 - (F) CLEAN OUT LINES

NON-SAFETY RELATED
SAFETY RELATED
QUALITY RELATED
(REF. SAR FIG. 9.3-9 & ISPT-63C)

Constellation Energy Group
NINE MILE POINT
NUCLEAR STATION
UNIT 2 - SCRIBA, N.Y.
PIPING & INSTRUMENTATION DIAGRAM
REACTOR BUILDING EQUIPMENT
AND FLOOR DRAINS

SCALE: NAME: DRAWING NO: LR-63C-0

D 207