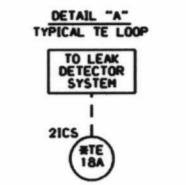


LR NOTE:
PLEASE REFER TO DRAWING LR-000 SHEETS 2A THROUGH 2F
FOR LR BOUNDARY DRAWING NOTES, SYMBOLS, AND ACRONYMS.



ASSOCIATED EQUIPMENT NUMBERS

TE	AREA
21CS7E18A	C-5
21CS7E18B	C-5

- AREA LEGEND
- REACTOR BLDG CLOSED LOOP COOLING WATER HT. EXH. ROOM
 - LOW PRESSURE COOL SPRAY PUMP ROOM
 - RESIDUAL HEAT REMOVAL SYSTEM PUMP RM. A
 - RESIDUAL HEAT REMOVAL SYSTEM HEAT EXH. RM. A
 - GENERAL AREA EL. 175'-0"
 - RAID PIPE CHASE
 - RESIDUAL HEAT REMOVAL HEAT EXH. RM. B
 - RESIDUAL HEAT REMOVAL PUMP ROOM B
 - RESIDUAL HEAT REMOVAL PUMP ROOM C
 - GENERAL AREA EL. 215'-0"
 - ELECTRICAL MCC AREA
 - ELECTRICAL MCC AREA
 - GENERAL AREA EL. 240'-0"
 - GEN AREA EL. 240'-0"
 - GEN AREA EL. 240'-0"
 - PHASE SEPARATOR PUMP RM. 6A
 - PHASE SEPARATOR PUMP RM. 6B
 - GENERAL AREA EL. 240'-0"
 - GENERAL AREA EL. 240'-0"
 - CONTAMINATED FUEL STORAGE
 - RMU FLT HOLDUP PUMP RM.
 - REPLACING FLOOR EL. 261'-0"
 - SOUTH STAIR TOWER
 - EQUIPMENT ACCESS AREA EL. 240'-0"
 - STANDBY GAS TREATMENT RM. B
 - RAILROAD ACCESS
 - REACTOR BLDG. HVAC SUPPLY EQUIPMENT ROOM
 - STANDBY GAS TREATMENT RM. A

- LINE LEGEND
- AIR SUPPLY (GA CAT II EXCEPT AS NOTED)
 - - - INDUCED AIR (NOT DUCTED)
 - O-O- AREA EXHAUST (GA CAT II)
 - AREA EXHAUST/RETURN (GA CAT I)

- NOTES
- ALL INSTRUMENT & EQUIPMENT NUMBERS TO BE PREFIXED WITH "3000" - EXCEPT WHERE A DIFFERENT PREFIX IS SHOWN. AN ASTERISK (*) WILL REPLACE THE DASH (-) IN THE PREFIX FOR EQUIPMENT OR INSTRUMENTS WHICH ARE A PART OF NUCLEAR SAFETY FEATURES SYSTEMS.
 - ALL AIR QUANTITIES ARE IN CUBIC FEET PER MINUTE (CFM).
 - UNIT HEATERS ARE SHOWN ON THIS PID.
 - UNIT COOLER DRAIN IS SHOWN ON PID-52C.
 - ELECTRIC HEATERS, FLOW SWITCHES, SHUTOFF DAMPERS, FIRE DAMPERS (GA CAT II), AND VOLUME DAMPERS SHALL BE FURNISHED AND INSTALLED BY SHEET METAL CONTRACTOR.
 - THE SYMBOL (#) DENOTES EQUIPMENT SUPPLIED BY GE.
 - SEE TYPICAL TE LOOP, DETAIL "A" (H-2).

THIS DRAWING WAS PRODUCED ELECTRONICALLY. DO NOT MAKE ANY CHANGES MANUALLY.

SAFETY RELATED
QUALITY RELATED
NON-SAFETY RELATED
(REF. SAR FIG.9.4-8e)

Constellation Energy Group
NINE MILE POINT NUCLEAR STATION
UNIT 2 - SCRIBA, N.Y.
PIPING & INSTRUMENTATION DIAGRAM
RX BUILDING VENTILATION & CAT I AREA COOLERS

SCALE: DRAWING NO: LR-52E-0

185