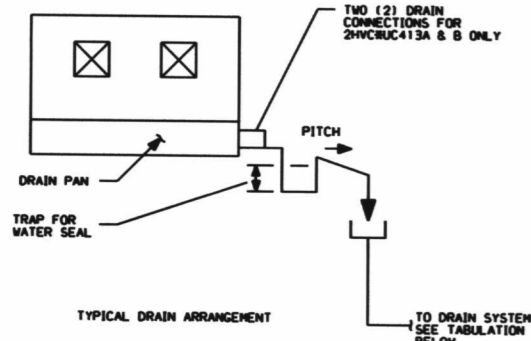
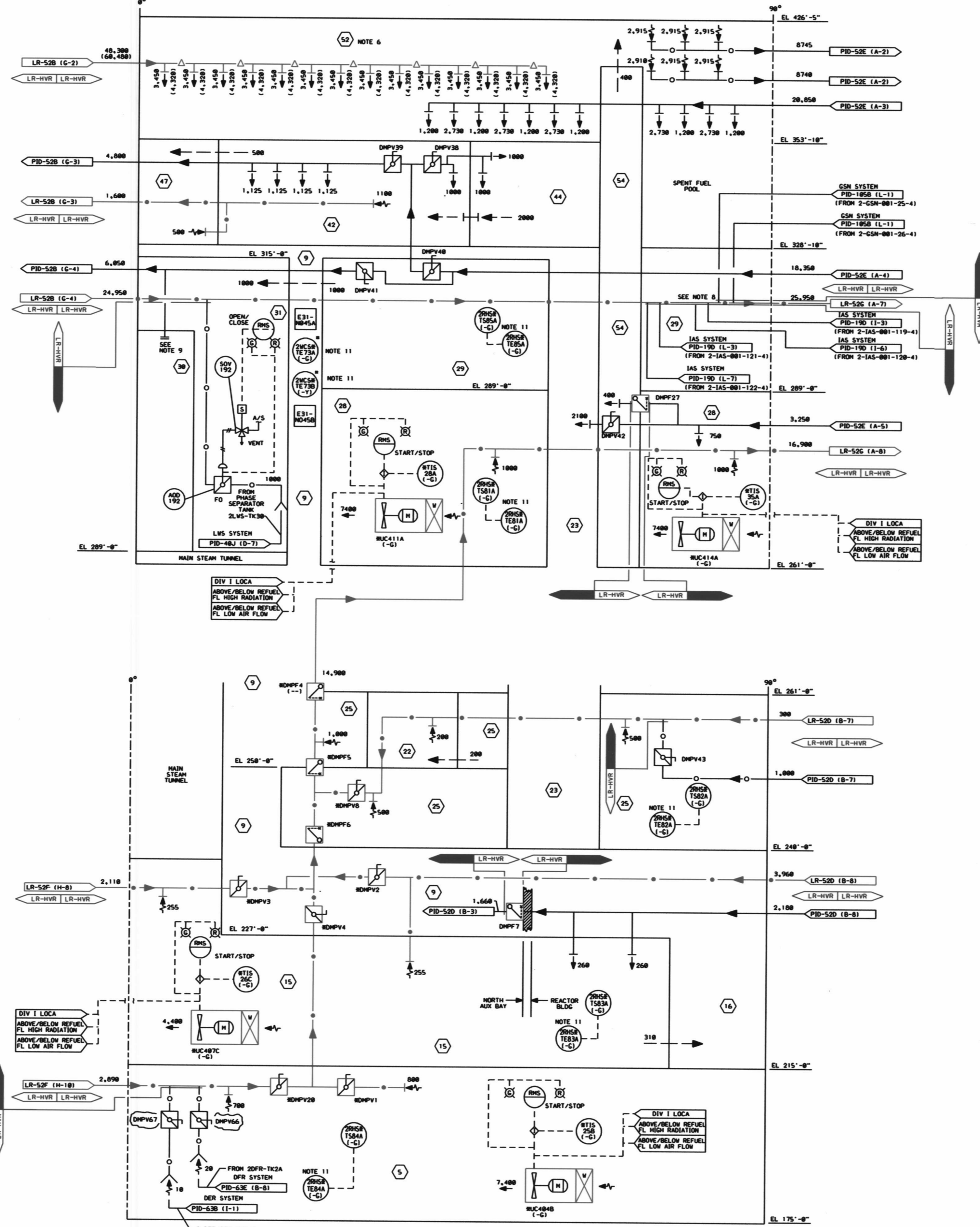


0-25-R7 ON SHEET



LC MARK NO SYMBOL	LINE DESIGNATION NO. (SEE NOTE 5)	DRAIN SYSTEM TO WHICH CONNECTED PID NO. OR LINE DES. NO.	DRAIN NO. TO WHICH CONNECTED
481A	2-HVR-158-1-4	PID-63C (F-10)	2DPR-ED1180
481B	2-HVR-158-2-4	PID-63D (H-4)	2DPR-ED1682
481C	2-HVR-158-3-4	PID-63E (C-4)	2DPR-ED1180
481D	2-HVR-158-4-4	PID-63C (F-10)	2DPR-ED1180
481E	2-HVR-158-5-4	PID-63D (H-4)	2DPR-ED1682
481F	2-HVR-158-6-4	PID-63D (C-4)	2DPR-ED1180
482A	2-HVR-882-7-4	PID-63C (C-10)	2DPR-ED1180
482B	2-HVR-882-8-4	PID-63D (H-10)	2DPR-ED1682
482C	2-HVR-882-9-4	PID-63E (E-10)	2DPR-ED1180
482D	2-HVR-882-10-4	PID-63D (C-10)	2DPR-ED1180
482E	2-HVR-882-11-4	PID-63D (H-10)	2DPR-ED1682
482F	2-HVR-882-12-4	PID-63E (E-10)	2DPR-ED1180
482G	2-HVR-882-13-4	PID-63C (J-10)	2DPR-ED1682
482H	2-HVR-882-14-4	PID-63D (F-10)	2DPR-ED1180
482I	2-HVR-882-15-4	PID-63C (I-10)	2DPR-ED1180
482J	2-HVR-882-16-4	PID-63D (G-10)	2DPR-ED1682
482K	2-HVR-882-17-4	PID-63B (B-10)	2DPR-ED3484
482L	2-HVR-882-18-4	PID-63B (C-10)	2DPR-ED3484
482M	2-HVR-882-19-4	PID-63B (E-10)	2DPR-ED3484
482N	2-HVR-882-20-4	PID-63B (D-10)	2DPR-ED3484
482O	2-HVR-882-21-4	PID-63B (H-7)	2DPR-ED3484
482P	2-HVR-882-22-4	PID-63C (H-7)	2DPR-ED4181
482Q	2-HVR-882-23-4	PID-63D (C-1)	2DPR-ED4181
482R	2-HVR-882-24-4	PID-63D (C-1)	2DPR-ED4181
482S	2-HVR-882-25-4	PID-63E (E-9)	2DPR-ED4181
482T	2-HVR-882-26-4	PID-63B (C-9)	2DPR-ED4181
482U	2-HVR-882-27-4	PID-63B (E-9)	2DPR-ED4181
482V	2-HVR-882-28-4	PID-63B (D-9)	2DPR-ED4181
482W	2-HVR-882-29-4	PID-63B (G-9)	2DPR-ED4181
482X	2-HVR-882-30-4	PID-63B (F-9)	2DPR-ED4181
482Y	2-HVR-882-31-4	PID-63B (D-9)	2DPR-ED4181
482Z	2-HVR-882-32-4	PID-63B (E-9)	2DPR-ED4181
483A	2-HVR-882-33-4	PID-63B (F-9)	2DPR-ED4181
483B	2-HVR-882-34-4	PID-63B (G-9)	2DPR-ED4181
483C	2-HVR-882-35-4	PID-63B (H-9)	2DPR-ED4181
483D	2-HVR-882-36-4	PID-63B (I-9)	2DPR-ED4181
483E	2-HVR-882-37-4	PID-63B (J-9)	2DPR-ED4181
483F	2-HVR-882-38-4	PID-63B (K-9)	2DPR-ED4181
483G	2-HVR-882-39-4	PID-63B (L-9)	2DPR-ED4181
483H	2-HVR-882-40-4	PID-63B (M-9)	2DPR-ED4181
483I	2-HVR-882-41-4	PID-63B (N-9)	2DPR-ED4181
483J	2-HVR-882-42-4	PID-63B (O-9)	2DPR-ED4181
483K	2-HVR-882-43-4	PID-63B (P-9)	2DPR-ED4181
483L	2-HVR-882-44-4	PID-63B (Q-9)	2DPR-ED4181
483M	2-HVR-882-45-4	PID-63B (R-9)	2DPR-ED4181
483N	2-HVR-882-46-4	PID-63B (S-9)	2DPR-ED4181
483O	2-HVR-882-47-4	PID-63B (T-9)	2DPR-ED4181
483P	2-HVR-882-48-4	PID-63B (U-9)	2DPR-ED4181
483Q	2-HVR-882-49-4	PID-63B (V-9)	2DPR-ED4181
483R	2-HVR-882-50-4	PID-63B (W-9)	2DPR-ED4181
483S	2-HVR-882-51-4	PID-63B (X-9)	2DPR-ED4181
483T	2-HVR-882-52-4	PID-63B (Y-9)	2DPR-ED4181
483U	2-HVR-882-53-4	PID-63B (Z-9)	2DPR-ED4181
483V	2-HVR-882-54-4	PID-63B (AA-9)	2DPR-ED4181
483W	2-HVR-882-55-4	PID-63B (AB-9)	2DPR-ED4181
483X	2-HVR-882-56-4	PID-63B (AC-9)	2DPR-ED4181
483Y	2-HVR-882-57-4	PID-63B (AD-9)	2DPR-ED4181
483Z	2-HVR-882-58-4	PID-63B (AE-9)	2DPR-ED4181
484A	2-HVR-882-59-4	PID-63B (AF-9)	2DPR-ED4181
484B	2-HVR-882-60-4	PID-63B (AG-9)	2DPR-ED4181
484C	2-HVR-882-61-4	PID-63B (AH-9)	2DPR-ED4181
484D	2-HVR-882-62-4	PID-63B (AI-9)	2DPR-ED4181
484E	2-HVR-882-63-4	PID-63B (AJ-9)	2DPR-ED4181
484F	2-HVR-882-64-4	PID-63B (AK-9)	2DPR-ED4181
484G	2-HVR-882-65-4	PID-63B (AL-9)	2DPR-ED4181
484H	2-HVR-882-66-4	PID-63B (AM-9)	2DPR-ED4181
484I	2-HVR-882-67-4	PID-63B (AN-9)	2DPR-ED4181
484J	2-HVR-882-68-4	PID-63B (AO-9)	2DPR-ED4181
484K	2-HVR-882-69-4	PID-63B (AP-9)	2DPR-ED4181
484L	2-HVR-882-70-4	PID-63B (AQ-9)	2DPR-ED4181
484M	2-HVR-882-71-4	PID-63B (AR-9)	2DPR-ED4181
484N	2-HVR-882-72-4	PID-63B (AS-9)	2DPR-ED4181
484O	2-HVR-882-73-4	PID-63B (AT-9)	2DPR-ED4181
484P	2-HVR-882-74-4	PID-63B (AU-9)	2DPR-ED4181
484Q	2-HVR-882-75-4	PID-63B (AV-9)	2DPR-ED4181
484R	2-HVR-882-76-4	PID-63B (AW-9)	2DPR-ED4181
484S	2-HVR-882-77-4	PID-63B (AX-9)	2DPR-ED4181
484T	2-HVR-882-78-4	PID-63B (AY-9)	2DPR-ED4181
484U	2-HVR-882-79-4	PID-63B (AZ-9)	2DPR-ED4181
484V	2-HVR-882-80-4	PID-63B (BA-9)	2DPR-ED4181
484W	2-HVR-882-81-4	PID-63B (BB-9)	2DPR-ED4181
484X	2-HVR-882-82-4	PID-63B (BC-9)	2DPR-ED4181
484Y	2-HVR-882-83-4	PID-63B (BD-9)	2DPR-ED4181
484Z	2-HVR-882-84-4	PID-63B (BE-9)	2DPR-ED4181
485A	2-HVR-882-85-4	PID-63B (BF-9)	2DPR-ED4181
485B	2-HVR-882-86-4	PID-63B (BG-9)	2DPR-ED4181
485C	2-HVR-882-87-4	PID-63B (BH-9)	2DPR-ED4181
485D	2-HVR-882-88-4	PID-63B (BI-9)	2DPR-ED4181
485E	2-HVR-882-89-4	PID-63B (BJ-9)	2DPR-ED4181
485F	2-HVR-882-90-4	PID-63B (BK-9)	2DPR-ED4181
485G	2-HVR-882-91-4	PID-63B (BL-9)	2DPR-ED4181
485H	2-HVR-882-92-4	PID-63B (BM-9)	2DPR-ED4181
485I	2-HVR-882-93-4	PID-63B (BN-9)	2DPR-ED4181
485J	2-HVR-882-94-4	PID-63B (BO-9)	2DPR-ED4181
485K	2-HVR-882-95-4	PID-63B (BP-9)	2DPR-ED4181
485L	2-HVR-882-96-4	PID-63B (BQ-9)	2DPR-ED4181
485M	2-HVR-882-97-4	PID-63B (BR-9)	2DPR-ED4181
485N	2-HVR-882-98-4	PID-63B (BS-9)	2DPR-ED4181
485O	2-HVR-882-99-4	PID-63B (BT-9)	2DPR-ED4181
485P	2-HVR-882-100-4	PID-63B (BU-9)	2DPR-ED4181

LR NOTE:
PLEASE REFER TO DRAWING LR-000 SHEETS 2A THROUGH 2F
FOR LR BOUNDARY DRAWING NOTES, SYMBOLS, AND ACRONYMS.



ASSOCIATED EQUIPMENT NUMBERS

TS	TE	AREA
2RHSRT585A	2MCSRT73A	G-4
2RHSRT581A	2MCSRT73B	G-4
2RHSRT582A	2RHSRT83A	I-4
2RHSRT583A	2RHSRT81A	I-5
2RHSRT584A	2RHSRT82A	J-7
	2RHSRT83A	I-9
	2RHSRT84A	G-18

- AREA LEGEND
- 5. GEN AREA EL 175'-0"
 - 9. RAD PIPE CHASE
 - 15. GEN AREA EL 215'-0"
 - 16. SPENT FUEL POOL HT EXCH RM "A"
 - 23. VALVE GUIDE RM, EL 258'-0"
 - 33. RAD PIPE CHASE
 - 25. GEN AREA EL 248'-0"
 - 26. GEN AREA EL 261'-0"
 - 30. PHASE SEPARATOR PUMP RM.
 - 29. GEN AREA EL 289'-0"
 - 42. GEN AREA EL 308'-10"
 - 31. FLT BACKWASH TK RM
 - 47. SPENT FUEL POOL FLT RM
 - 52. REFUELING FLOOR EL 353'-10"
 - 54. NORTH STAIR TOWER

- LINE LEGEND
- AIR SUPPLY (OA CAT II EXCEPT AS NOTED)
 - RECIRCULATED AIR (OA CAT I)
 - INDUCED AIR (NOT DUCTED)
 - AREA EXHAUST (OA CAT II)
 - AREA EXHAUST/RETURN (OA CAT I)
 - EXFILTRATE OR INFILTRATE AIR

- NOTES
1. ALL INSTRUMENT & EQUIPMENT NUMBERS TO BE PREFIXED WITH "2MCS" EXCEPT WHERE A DIFFERENT PREFIX IS SHOWN. AN ASTERISK (*) WILL REPLACE THE DASH (-) IN THE PREFIX FOR EQUIPMENT OR INSTRUMENTS WHICH ARE A PART OF NUCLEAR SAFETY FEATURE SYSTEMS.
 2. ALL AIR QUANTITIES ARE IN CUBIC FEET PER MINUTE (CFM).
 3. UNIT COOLER DRAIN IS SHOWN ON THIS PID.
 4. UNIT METERS ARE SHOWN ON PID-52C.
 5. ALL PIPING IS CLASS 151A.
 6. RECIRCULATING AIR QUANTITIES IN PARENTHESIS () FOR AREA (A) ARE MAXIMUM.
 7. SHUT OFF DAMPERS, FIRE DAMPERS (OA CAT II) AND VOLUME DAMPERS SHALL BE FURNISHED BY SHEET METAL CONTRACTOR.
 8. DUCTWORK TO PIPE CONNECTION TO BE 3/4" DIAMETER.
 9. BLANK OFF DUCT OPENING TO PREVENT SUPPLY AIR INTO AREA (A).
 10. THE SYMBOL (T) DENOTES EQUIPMENT FURNISHED BY C.E.
 11. SEE TYPICAL (T) LOOP AND TABLE DETAIL "A" IN-21.

SAFETY RELATED
QUALITY RELATED
NON SAFETY RELATED
(REF. SAR FIG. 9.4-8c)

Constellation Energy Group NINE MILE POINT NUCLEAR STATION UNIT 2 - SCRIBA, N.Y.

PIPING & INSTRUMENTATION DIAGRAM
RX BUILDING VENTILATION & CAT I AREA COOLERS

SCALE NONE DRAWING NO LR-52C-0

183