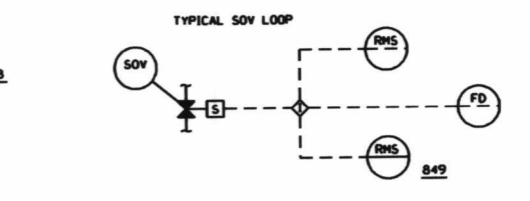


ZONE	DESCRIPTION	PRESSURE SWITCH
3536G	CONTROL BLDG. ELEV. 288'-6" NORTHWEST PCCC FLOOR SECTIONS	PS111
3545G	CONTROL BLDG. ELEV. 288'-6" NORTHEAST PCCC FLOOR SECTIONS	PS112
3576G & 3585G	CONTROL BLDG. ELEV. 288'-6" COMPUTER ROOM UNDERFLOOR AND COMPUTER ROOM	PS113
3625G	CONTROL BLDG. ELEV. 288'-6" SOUTHWEST PCCC FLOOR SECTIONS	PS114
3745G	CONTROL BLDG. ELEV. 386'-8" NORTHWEST PCCC FLOOR SECTIONS	PS115
3755G	CONTROL BLDG. ELEV. 386'-8" NORTHEAST PCCC FLOOR SECTIONS	PS116
3765G	CONTROL BLDG. ELEV. 386'-8" CONTROL ROOM UNDERFLOOR	PS117
3815G	CONTROL BLDG. ELEV. 386'-8" PCCC BENCHMARK FLOOR SECTIONS	PS118
3985G	RADWASTE CONTROL ROOM, DECON BUILDING EL. 279'-6"	PS119

MARK NO.	VALVE DESCRIPTION	SIZE	NO. REQ.
V28-21-22	V28-48-A-4	1"	6
V23-24-25	BY SELLER	2"	12
V2881 THRU V28816	BY SELLER	3"	4
SOV185-186	SUPPLIED BY CONTRACTOR SPEC PAGE2		17
SOV121A,B	SUPPLIED BY CONTRACTOR SPEC PAGE2		4
SOV125A,B	SUPPLIED BY CONTRACTOR SPEC PAGE2		4



SOV	ZONE NUMBER	LOCAL PANEL	COMP. NO.
182	3545G SELECTOR VLV	129	849
184	3525G SELECTOR VLV	129	849
185	3745G SELECTOR VLV	129	849
186	3755G SELECTOR VLV	129	849
188	3815G SELECTOR VLV	129	849
121A	TX1A MAIN SUPPLY VLV	129	849
121B	TX1B MAIN SUPPLY VLV	129	849
122A	TX1A RESERVE SUPPLY VLV	129	849
122B	TX1B RESERVE SUPPLY VLV	129	849
125A	TX5A MAIN SUPPLY VLV	129	849
125B	TX5B MAIN SUPPLY VLV	129	849
126A	TX6A MAIN SUPPLY VLV	129	849
126B	TX6B MAIN SUPPLY VLV	129	849
139A	TX3A MAIN SUPPLY VLV	129	849
139B	TX3B MAIN SUPPLY VLV	129	849
148A	TX4A MAIN SUPPLY VLV	129	849
148B	TX4B MAIN SUPPLY VLV	129	849
1488	TX58 RESERVE SUPPLY VLV	129	849

LR NOTE:
PLEASE REFER TO DRAWING LR-000 SHEETS 2A THROUGH 2F FOR LR BOUNDARY DRAWING NOTES, SYMBOLS, AND ACRONYMS.

- NOTES:
- ALL INSTRUMENT & EQUIPMENT NUMBERS TO BE PREFIXED WITH "PNC" EXCEPT WHERE A DIFFERENT PREFIX IS SHOWN FOR OPENING WHEN POWER IS NOT AVAILABLE.
 - ALL SOLENOID VALVES ARE EQUIPPED WITH MANUAL OVERRIDES FOR OPENING WHEN POWER IS NOT AVAILABLE.
 - INDICATES FIRE COMPUTER INPUT POINT.
 - ALL CONTROL BUILDING EQUIPMENT, INSTRUMENTS, PIPING AND VALVES ARE SUPPLIED BY HALON 1381 CONTRACTOR (SPEC. NO. P4821).
 - ALL RADWASTE CONTROL ROOM EQUIPMENT, INSTRUMENTS, PIPING AND VALVES ARE SUPPLIED BY RADWASTE BUILDING FIRE PROTECTION (SPEC. NO. P4823).
 - AIR CONDITIONING UNITS (ZONES 3755G & 3585G) TO BE CLOSED AT TIME OF HALON DISCHARGE.
 - DOORS IN COMPUTER ROOM (ZONES 3755G & 3585G) TO BE CLOSED AT TIME OF HALON DISCHARGE.
 - FOR NUMBER AND TYPE OF DISCHARGE NOZZLES AT EACH ZONE SEE CONTRACTOR'S INSTALLATION DRAWINGS.
 - FIRE DAMPERS (SHV-DMP-180) AND 180 ARE INTERLOCKED TO CLOSE WHEN HALON SYSTEM DISCHARGES.
 - ALL DOORS IN DECON AREA TO BE CLOSED AT TIME OF HALON DISCHARGE.

THIS DRAWING WAS PRODUCED ELECTRONICALLY. DO NOT MAKE ANY CHANGES MANUALLY.

QA CAT III

Constellation Energy Group NINE MILE POINT NUCLEAR STATION - UNIT 2 SCRIBA, N.Y.

FIRE PROTECTION-HALON

SCALE: DRAWING NO. LR-46A-0

NO.	DATE	DESCRIPTION OF REVISION	BY	CHKD	APP'D	STR

179