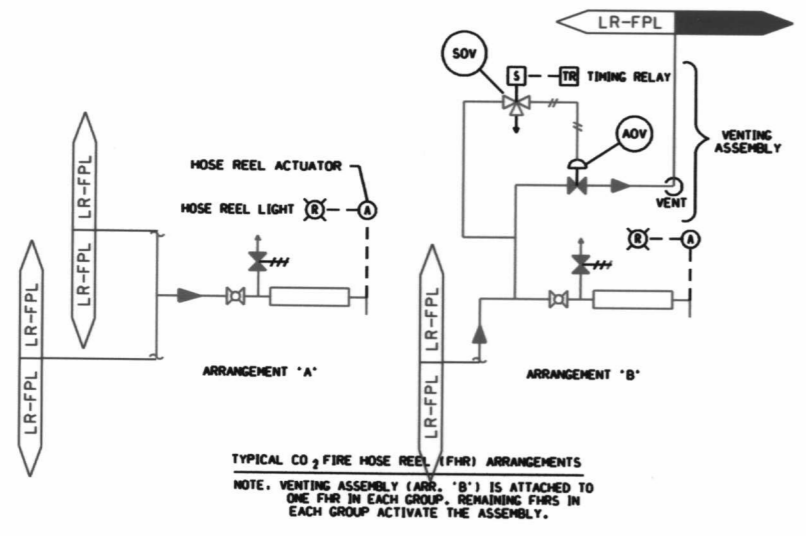


ELECTRICAL EQUIPMENT (MARK NO'S) ASSOCIATED WITH CO₂ HAZARD/ZONES

ZONE NO.	RRL NO.	AL NO.	LCS NO.
253XL	2PPL-RRL081	2PPL-AL081	2PPL-LC0837
333XL	2PPL-RRL585	2PPL-AL585	2PPL-LC5532
336XL	2PPL-RRL584	2PPL-AL584	2PPL-LC5537
342XL	2PPL-RRL586	2PPL-AL586	2PPL-LC5536
395XL	2PPL-RRL080	2PPL-AL080	2PPL-LC0800
601XL	2PPL-RRL581	2PPL-AL581	2PPL-LC5550
602XL	2PPL-RRL580	2PPL-AL580	2PPL-LC5527
612XL	2PPL-RRL583	2PPL-AL583	2PPL-LC5538
613XL	2PPL-RRL582	2PPL-AL582	2PPL-LC5529
726XL	2PPL-RRL786	2PPL-AL786	2PPL-LC5793
733XL	2PPL-RRL784	2PPL-AL784	2PPL-LC5791
740XL	2PPL-RRL786	2PPL-AL782	2PPL-LC5794
757XL	2PPL-RRL780	2PPL-AL780	2PPL-LC5787
758XL/W	2PPL-RRL781	2PPL-AL783	2PPL-LC5798
759XL/W	2PPL-RRL782	2PPL-AL783	2PPL-LC5789
760XL/W	2PPL-RRL783	2PPL-AL783	2PPL-LC5788



ELECTRICAL EQUIPMENT FOR CO₂ FIRE HOSE REELS

FHR NO.	SOV NO.	TR NO.	FHR NO.	SOV NO.	TR NO.
2PPL-FHR1	2PPL-SOV196	2PPL-TR708	2PPL-FHR16	2PPL-SOV199	2PPL-TR580
2PPL-FHR2	↓	↓	2PPL-FHR17	↓	↓
2PPL-FHR3	↓	↓	2PPL-FHR18	↓	↓
2PPL-FHR4	2PPL-SOV197	2PPL-TR701	2PPL-FHR19	2PPL-SOV203	2PPL-TR802
2PPL-FHR5	↓	↓	2PPL-FHR20	2PPL-SOV204	2PPL-TR801
2PPL-FHR6	2PPL-SOV232	2PPL-TR702	2PPL-FHR21	2PPL-SOV205	2PPL-TR801
2PPL-FHR7	↓	↓	2PPL-FHR22	2PPL-SOV201	2PPL-TR581
2PPL-FHR8	↓	↓	2PPL-FHR23	↓	↓
2PPL-FHR9	↓	↓	2PPL-FHR24	↓	↓
2PPL-FHR10	↓	↓	2PPL-FHR25	↓	↓
2PPL-FHR11	2PPL-SOV198	2PPL-TR582	2PPL-FHR26	↓	↓
2PPL-FHR12	↓	↓	2PPL-FHR27	↓	↓
2PPL-FHR13	↓	↓	2PPL-FHR28	↓	↓
2PPL-FHR14	↓	↓	2PPL-FHR29	↓	↓
			2PPL-FHR30	↓	↓

CO₂ SYSTEM VALVES AND ASSOCIATED POSITION SWITCH MARK NO.

VALVE NO.	POSITION SWITCH	VALVE NO.	POSITION SWITCH
2PPL-V3	2PPL-ZS203	2PPL-V20	2PPL-ZS214
2PPL-V4	2PPL-ZS202	2PPL-V21	2PPL-ZS215
2PPL-V11	2PPL-ZS206	2PPL-V22	2PPL-ZS216
2PPL-V12	2PPL-ZS206	2PPL-V23	2PPL-ZS217
2PPL-V13	2PPL-ZS207	2PPL-V24	2PPL-ZS218
2PPL-V14	2PPL-ZS208	2PPL-V25	2PPL-ZS219
2PPL-V15	2PPL-ZS209	2PPL-V26	2PPL-ZS220
2PPL-V16	2PPL-ZS210	2PPL-V27	2PPL-ZS221
2PPL-V17	2PPL-ZS211	2PPL-V28	2PPL-ZS222
2PPL-V18	2PPL-ZS212	2PPL-V29	2PPL-ZS223
2PPL-V19	2PPL-ZS213	2PPL-V30	2PPL-ZS226

- NOTES:**
1. ALL INSTRUMENT AND EQUIPMENT NUMBERS TO BE PREFIXED WITH "FPL" EXCEPT WHERE A DIFFERENT PREFIX IS SHOWN.
 2. ALL EQUIPMENT, INSTRUMENTS, PIPING AND VALVES ARE SUPPLIED BY L.P. CO₂ CONTRACTOR (SPEC. NO. PHE20) UNLESS OTHERWISE NOTED.
 3. ALL PRESSURE RELIEF DEVICES SHALL BE SO LOCATED THAT DISCHARGE OF CO₂ WILL NOT INJURE PERSONAL OR BE OTHERWISE OBJECTIONABLE.
 4. INDICATES EQUIPMENT PIPING CONTAINED WITHIN THE PILOT CONTROL CABINET.
 5. REPRESENTS PILOT PIPE ROUTING FOR ZONE NOS. 759XL/W, 759XL/W, 760XL/W, 601XL, 602XL, 612XL & 613XL. REFER TO PID-42A & C FOR ALL OTHER ZONES.
 6. ALL LOCAL PANELS AND ALARMS ARE SHOWN FOR COMPONENT IDENTIFICATION PURPOSES. SEE PID-42A & C FOR CONTROL ARRANGEMENT.

LR NOTE:
PLEASE REFER TO DRAWING LR-000 SHEETS 2A THROUGH 2F FOR LR BOUNDARY DRAWING NOTES, SYMBOLS, AND ACRONYMS.

QA CAT III

Constellation Energy Group NINE MILE POINT NUCLEAR STATION UNIT 2 - SCRIBA, N.Y.

FIRE PROTECTION
LOW PRESSURE CO₂

MF	REV	DATE	DESCRIPTION OF REVISION	M.O.	DFT	DES	CHD	ENG	ELEC	MECH	STR	MF	REV	DATE	DESCRIPTION OF REVISION	M.O.	DFT	DES	CHD	ENG	ELEC	MECH	STR	MF	REV	DATE	DESCRIPTION OF REVISION	M.O.	DFT	DES	CHD	ENG	ELEC	MECH	STR				

D 177