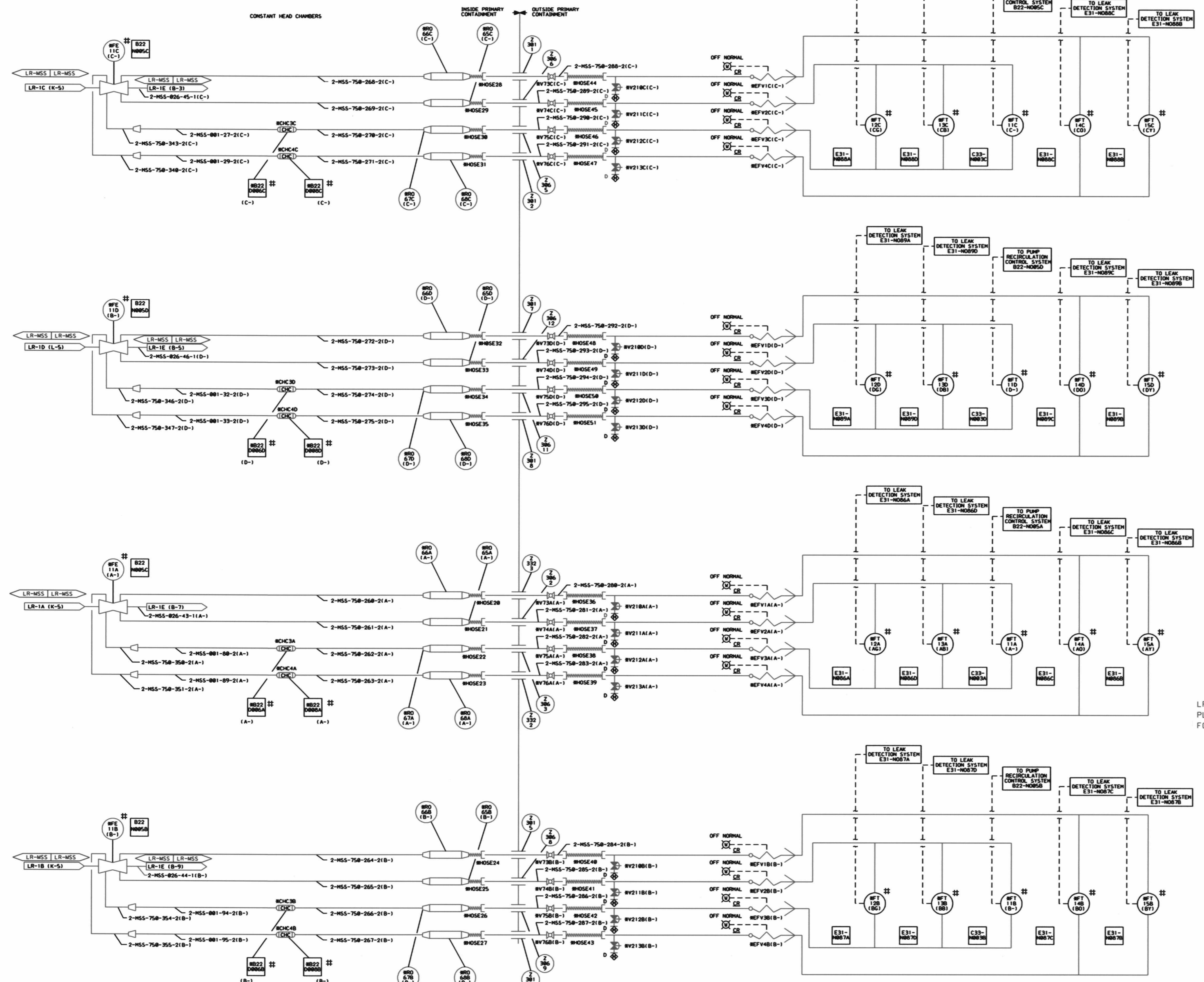


9917

LR-1-J-0

MARK NUMBER	VALVE DESCRIPTION	SIZE	NO. OF VALVES
V37A,B,C,D	V0515B-W-2	3/4"	16
V34A,B,C,D			
V35A,B,C,D			
V36A,B,C,D			
V21A,B,C,D	V5515B-A-2	3/4"	16
V22A,B,C,D			
V23A,B,C,D			



- NOTES:
1. ALL INSTRUMENT & EQUIPMENT NUMBERS TO BE PREFIXED WITH "2065-" EXCEPT WHERE A DIFFERENT PREFIX IS SHOWN. AN INSTRUMENT (B) WILL REPLACE THE BISH (1) IN THE PREFIX FOR EQUIPMENT OR INSTRUMENTS WHICH ARE A PART OF THE NUCLEAR SAFETY FEATURES SYSTEM.
 2. GENERAL ELECTRIC IDENTIFICATION NUMBERS ARE SHOWN IN SQUARES.
 3. ALL LINES OUTSIDE PRIMARY CONTAINMENT ARE CLASS 1500 UNLESS OTHERWISE NOTED. ALL LINES INSIDE PRIMARY CONTAINMENT ARE CLASS 1516 UNLESS OTHERWISE NOTED. 26" HEADERS ARE CLASS 9001.
 4. ALL LOCAL DRAIN CONNECTIONS ARE 3/4".
 5. # DENOTES SUPPLIED BY GE-MED.

LR NOTE:
PLEASE REFER TO DRAWING LR-000 SHEETS 2A THROUGH 2F FOR LR BOUNDARY DRAWING NOTES, SYMBOLS, AND ACRONYMS.

SAFETY RELATED
(REF. SAR FIG. 10.1-3)

Constellation Energy Group
NINE MILE POINT NUCLEAR STATION
UNIT 2 - SCRIBA, N.Y.

PIPING & INSTRUMENTATION DIAGRAM
MAIN STEAM

REV	DATE	DESCRIPTION OF REVISION	M.O.	DFT	DES	CHKD	ENG	ELEC	MECH	STR	MF	REV	DATE	DESCRIPTION OF REVISION	M.O.	DFT	DES	CHKD	ENG	ELEC	MECH	STR	

SCALE NONE DRAWING NO LR-1-J-0

D-106