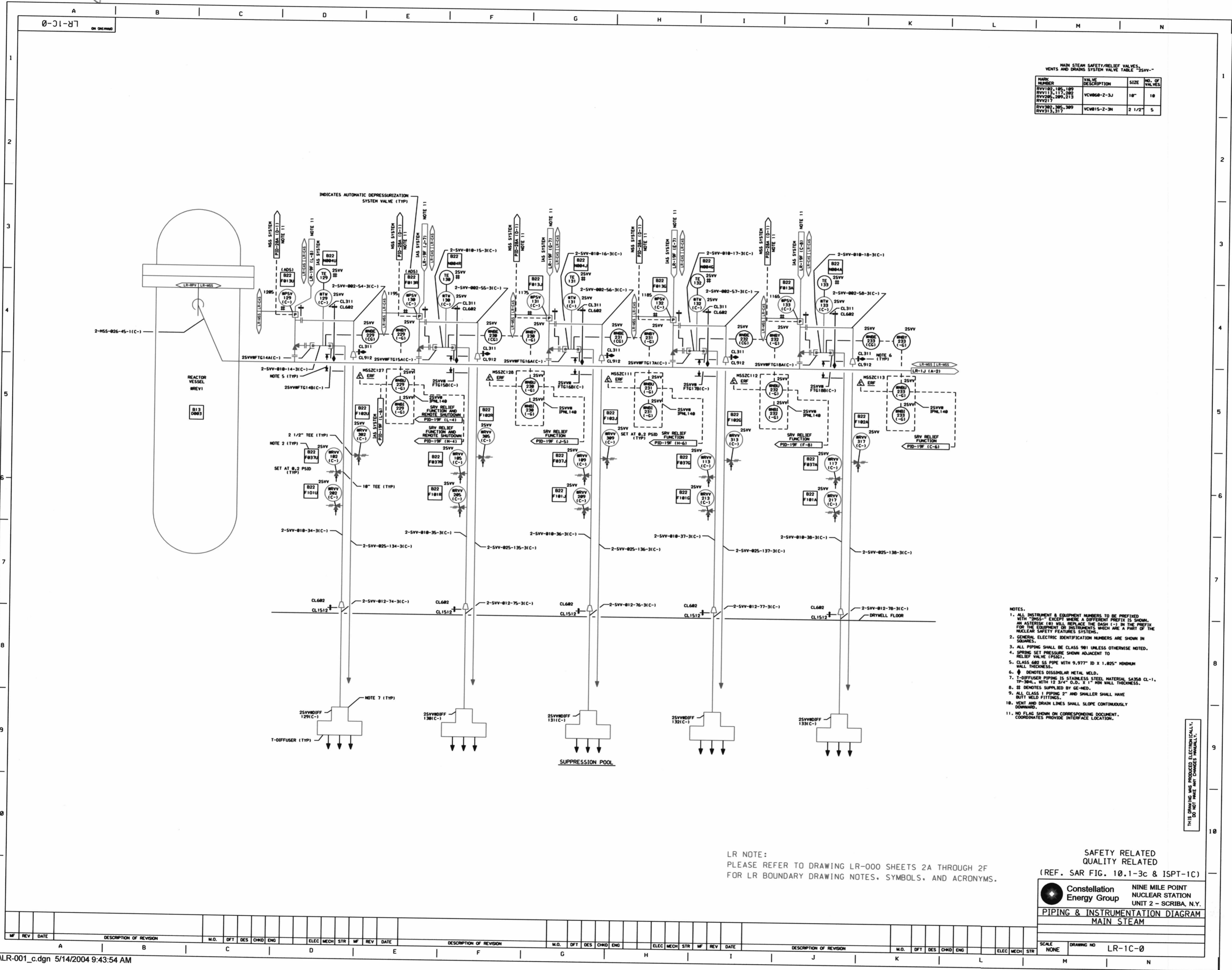


2010



MAIN STEAM SAFETY/RELIEF VALVES, VENTS AND DRAIN SYSTEM VALVE TABLE "25SVV"-

MARK NUMBER	VALVE DESCRIPTION	SIZE	NO. OF VALVES
RVV192, 195, 199			
RVV13, 117, 202	VCN060-Z-3J	18"	18
RVV217, 209, 213			
RVV382, 385, 389	VCN015-Z-3H	2 1/2"	5
RVV313, 317			

- NOTES:
1. ALL INSTRUMENT & EQUIPMENT NUMBERS TO BE PREFIXED WITH "25SVV" EXCEPT WHERE A DIFFERENT PREFIX IS SHOWN. AN ASTERISK (*) WILL REPLACE THE DASH (-) IN THE PREFIX FOR THE EQUIPMENT OR INSTRUMENTS WHICH ARE A PART OF THE NUCLEAR SAFETY FEATURES SYSTEMS.
 2. GENERAL ELECTRIC IDENTIFICATION NUMBERS ARE SHOWN IN SQUARES.
 3. ALL PIPING SHALL BE CLASS 901 UNLESS OTHERWISE NOTED.
 4. SPRING SET PRESSURE SHOWN ADJACENT TO RELIEF VALVE (PSV).
 5. CLASS 680 SS PIPE WITH 9.977" ID X 1.025" MINIMUM WALL THICKNESS.
 6. ♦ DENOTES DISSIMILAR METAL WELD.
 7. T-DIFFUSER PIPING IS STAINLESS STEEL MATERIAL SA350 CL-1, TP-304L, WITH 12 3/4" O.D. X 1" MIN WALL THICKNESS.
 8. IS DENOTES SUPPLIED BY GE-MED.
 9. ALL CLASS I PIPING 2" AND SMALLER SHALL HAVE BUTT WELD FITTINGS.
 10. VENT AND DRAIN LINES SHALL SLOPE CONTINUOUSLY DOWNWARD.
 11. NO FLAG SHOWN ON CORRESPONDING DOCUMENT. COORDINATES PROVIDE INTERFACE LOCATION.

LR NOTE:
PLEASE REFER TO DRAWING LR-000 SHEETS 2A THROUGH 2F FOR LR BOUNDARY DRAWING NOTES, SYMBOLS, AND ACRONYMS.

SAFETY RELATED
QUALITY RELATED
(REF. SAR FIG. 10.1-3c & ISPT-1C)

Constellation Energy Group
NINE MILE POINT NUCLEAR STATION
UNIT 2 - SCRIBA, N.Y.
PIPING & INSTRUMENTATION DIAGRAM
MAIN STEAM

SCALE NONE DRAWING NO LR-1C-0

THIS DRAWING WAS PRODUCED ELECTRONICALLY. DO NOT MAKE ANY CHANGES MANUALLY.

D-102