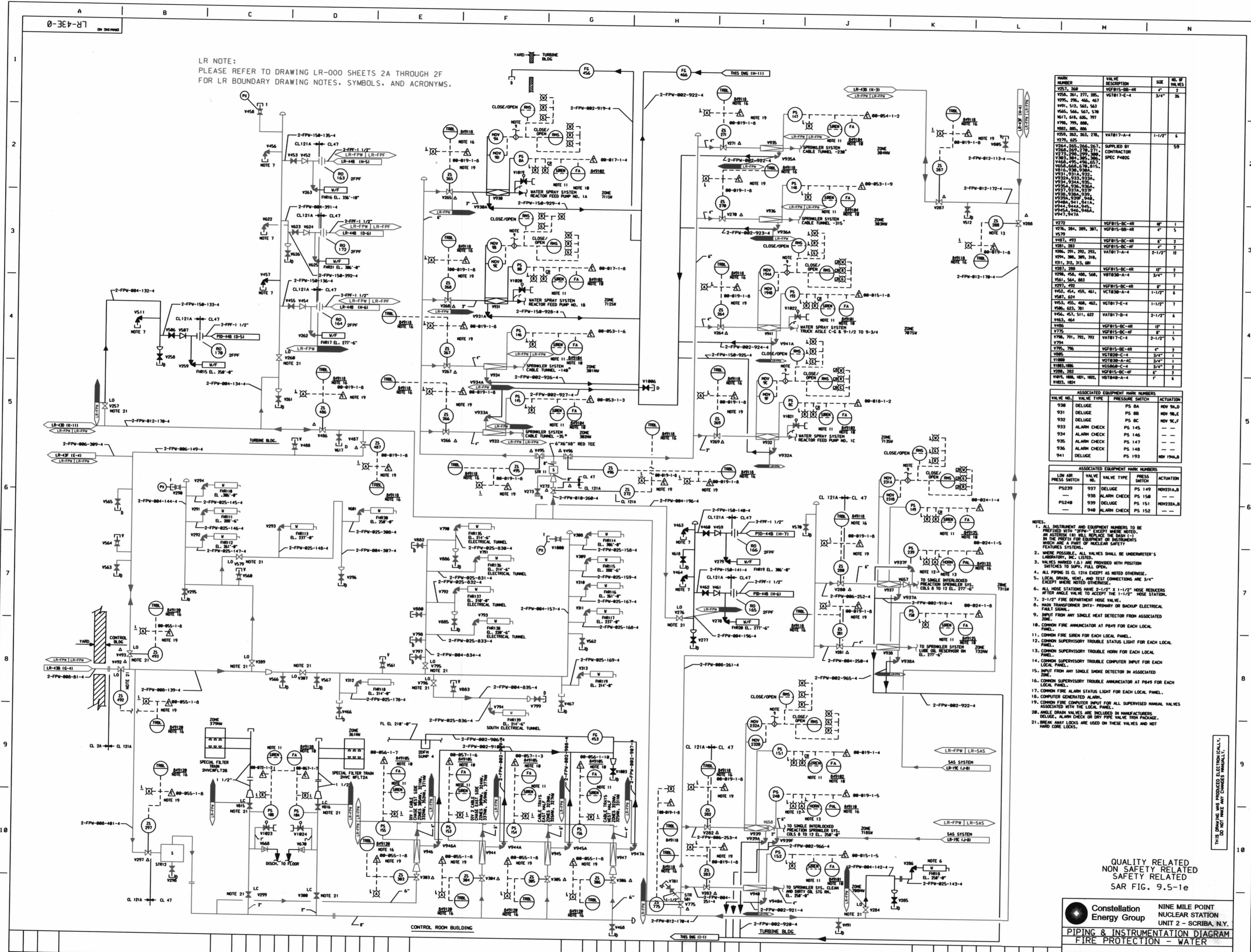


LR NOTE:
PLEASE REFER TO DRAWING LR-000 SHEETS 2A THROUGH 2F
FOR LR BOUNDARY DRAWING NOTES, SYMBOLS, AND ACRONYMS.



MARK NUMBER	DESCRIPTION	SIZE	NO. OF VALVES
V517, 518	VF015-BC-4R	4"	2
V524, 541, 277, 285, 295, 296, 464, 467, 491, 515, 562, 563, 566, 566, 567, 570, 571, 618, 626, 797, 798, 799, 800, 802, 805, 806	VF017-E-4	3/4"	26
V529, 362, 363, 278, V279, 625	VAT017-A-4	1-1/2"	4
V524, 266, 266, 267, V528, 269, 278, 271, V272, 474, 475, 476, 477, 478, 479, 480, 481, 482, 483, 484, 485, 486, 487, 488, 489, 490, 491, 492, 493, 494, 495, 496, 497, 498, 499, 500, 501, 502, 503, 504, 505, 506, 507, 508, 509, 510, 511, 512, 513, 514, 515, 516, 517, 518, 519, 520, 521, 522, 523, 524, 525, 526, 527, 528, 529, 530, 531, 532, 533, 534, 535, 536, 537, 538, 539, 540, 541, 542, 543, 544, 545, 546, 547, 548, 549, 550, 551, 552, 553, 554, 555, 556, 557, 558, 559, 560, 561, 562, 563, 564, 565, 566, 567, 568, 569, 570, 571, 572, 573, 574, 575, 576, 577, 578, 579, 580, 581, 582, 583, 584, 585, 586, 587, 588, 589, 590, 591, 592, 593, 594, 595, 596, 597, 598, 599, 600, 601, 602, 603, 604, 605, 606, 607, 608, 609, 610, 611, 612, 613, 614, 615, 616, 617, 618, 619, 620, 621, 622, 623, 624, 625, 626, 627, 628, 629, 630, 631, 632, 633, 634, 635, 636, 637, 638, 639, 640, 641, 642, 643, 644, 645, 646, 647, 648, 649, 650, 651, 652, 653, 654, 655, 656, 657, 658, 659, 660, 661, 662, 663, 664, 665, 666, 667, 668, 669, 670, 671, 672, 673, 674, 675, 676, 677, 678, 679, 680, 681, 682, 683, 684, 685, 686, 687, 688, 689, 690, 691, 692, 693, 694, 695, 696, 697, 698, 699, 700, 701, 702, 703, 704, 705, 706, 707, 708, 709, 710, 711, 712, 713, 714, 715, 716, 717, 718, 719, 720, 721, 722, 723, 724, 725, 726, 727, 728, 729, 730, 731, 732, 733, 734, 735, 736, 737, 738, 739, 740, 741, 742, 743, 744, 745, 746, 747, 748, 749, 750, 751, 752, 753, 754, 755, 756, 757, 758, 759, 760, 761, 762, 763, 764, 765, 766, 767, 768, 769, 770, 771, 772, 773, 774, 775, 776, 777, 778, 779, 780, 781, 782, 783, 784, 785, 786, 787, 788, 789, 790, 791, 792, 793, 794, 795, 796, 797, 798, 799, 800, 801, 802, 803, 804, 805, 806, 807, 808, 809, 810, 811, 812, 813, 814, 815, 816, 817, 818, 819, 820, 821, 822, 823, 824, 825, 826, 827, 828, 829, 830, 831, 832, 833, 834, 835, 836, 837, 838, 839, 840, 841, 842, 843, 844, 845, 846, 847, 848, 849, 850, 851, 852, 853, 854, 855, 856, 857, 858, 859, 860, 861, 862, 863, 864, 865, 866, 867, 868, 869, 870, 871, 872, 873, 874, 875, 876, 877, 878, 879, 880, 881, 882, 883, 884, 885, 886, 887, 888, 889, 890, 891, 892, 893, 894, 895, 896, 897, 898, 899, 900, 901, 902, 903, 904, 905, 906, 907, 908, 909, 910, 911, 912, 913, 914, 915, 916, 917, 918, 919, 920, 921, 922, 923, 924, 925, 926, 927, 928, 929, 930, 931, 932, 933, 934, 935, 936, 937, 938, 939, 940, 941, 942, 943, 944, 945, 946, 947, 948, 949, 950, 951, 952, 953, 954, 955, 956, 957, 958, 959, 960, 961, 962, 963, 964, 965, 966, 967, 968, 969, 970, 971, 972, 973, 974, 975, 976, 977, 978, 979, 980, 981, 982, 983, 984, 985, 986, 987, 988, 989, 990, 991, 992, 993, 994, 995, 996, 997, 998, 999, 1000	SUPPLIED BY CONTRACTOR SPEC P402C		59
V272	VF015-BC-4R	8"	1
V274, 284, 289, 297, V579	VF015-BC-4F	4"	5
V487, 493	VF015-BC-4R	4"	2
V521, 283	VF015-BC-4F	4"	2
V294, 291, 292, 293, V294, 308, 309, 318, V311, 313, 313, 313	VAT017-A-4	2-1/2"	12
V297, 288	VF015-BC-4R	12"	2
V298, 458, 458, 568, V561, 564, 683	VF015-BC-4R	3/4"	7
V297, 492	VF015-BC-4R	4"	2
V552, 654, 459, 461, V552, 654	VF015-BC-4R	1-1/2"	6
V554, 655, 468, 465, V560, 623, 381	VAT017-E-4	1-1/2"	2
V466, 657, 511, 622, V465, 654	VAT017-B-4	2-1/2"	6
V486	VF015-BC-4R	12"	1
V777	VF015-BC-4F	8"	1
V794, 791, 792, 793, V794	VAT017-C-4	2-1/2"	5
V795, 795	VF015-BC-4R	4"	2
V805	VF015-BC-4R	3/4"	1
V1808	VF015-BC-4R	3/4"	1
V1809	VF015-BC-4R	3/4"	1
V1810, 1805	VF015-BC-4R	3/4"	2
V1811, 1806	VF015-BC-4R	3/4"	2
V1812, 1807, 1821, V1823, 1824	VF015-BC-4R	3/4"	6

VALVE NO.	VALVE TYPE	PRESSURE SWITCH	ACTION
930	DELUGE	PS 8A	NOV 9A,D
931	DELUGE	PS 8B	NOV 9B,E
932	DELUGE	PS 8C	NOV 9C,F
933	ALARM CHECK	PS 145	---
934	ALARM CHECK	PS 146	---
935	ALARM CHECK	PS 147	---
936	ALARM CHECK	PS 148	---
941	DELUGE	PS 193	NOV 19A,B

LOW AIR PRESS SWITCH	VALVE NO.	VALVE TYPE	PRESS SWITCH	ACTION
PS239	937	DELUGE	PS 149	NOV23A,B
PS240	939	DELUGE	PS 150	---
---	948	ALARM CHECK	PS 152	---

- NOTES:
- ALL INSTRUMENT AND EQUIPMENT NUMBERS TO BE PREFIXED WITH "FPW" EXCEPT WHERE NOTED. AN ASTERISK (*) WILL REPLACE THE DASH (-) IN THE PREFIX FOR EQUIPMENT OR INSTRUMENTS WHICH ARE A PART OF NUCLEAR SAFETY FEATURES SYSTEMS.
 - WHERE POSSIBLE, ALL VALVES SHALL BE UNDERWRITERS LABORATORY, INC. LISTED.
 - VALVES MARKED (L) ARE PROVIDED WITH POSITION SWITCHES TO SUPPLY FULL OPEN.
 - ALL PIPING IS CL. 121A EXCEPT AS NOTED OTHERWISE.
 - LOCAL DRAIN, VENT, AND TEST CONNECTIONS ARE 3/4" EXCEPT WHERE NOTED OTHERWISE.
 - ALL HOSE STATIONS HAVE 2-1/2" x 1-1/2" HOSE REDUCERS AFTER ANGLE VALVE TO ACCEPT THE 1-1/2" HOSE STATION.
 - 2-1/2" FIRE DEPARTMENT HOSE VALVE.
 - MAIN TRANSFORMER 2MTX - PRIMARY OR BACKUP ELECTRICAL FAULT SIGNAL.
 - INPUT FROM ANY SINGLE HEAT DETECTOR FROM ASSOCIATED ZONE.
 - COMMON FIRE ANNUNCIATOR AT P849 FOR EACH LOCAL PANEL.
 - COMMON FIRE SIREN FOR EACH LOCAL PANEL.
 - COMMON SUPERVISORY TROUBLE STATUS LIGHT FOR EACH LOCAL PANEL.
 - COMMON SUPERVISORY TROUBLE HORN FOR EACH LOCAL PANEL.
 - INPUT FROM ANY SINGLE SMOKE DETECTOR IN ASSOCIATED ZONE.
 - COMMON SUPERVISORY TROUBLE COMPUTER INPUT FOR EACH LOCAL PANEL.
 - COMMON SUPERVISORY TROUBLE ANNUNCIATOR AT P849 FOR EACH LOCAL PANEL.
 - COMMON FIRE ALARM STATUS LIGHT FOR EACH LOCAL PANEL.
 - COMMON FIRE ALARM.
 - COMMON FIRE COMPUTER INPUT FOR ALL SUPERVISED MANUAL VALVES ASSOCIATED WITH THE LOCAL PANEL.
 - ANGLE DRAIN VALVES ARE INCLUDED IN MANUFACTURERS DELUGE, ALARM CHECK OR DRY PIPE VALVE TRIM PACKAGE.
 - BREAK AWAY LOCKS ARE USED ON THESE VALVES AND NOT HAND CORE LOCKS.

QUALITY RELATED
NON SAFETY RELATED
SAFETY RELATED
SAR FIG. 9.5-1e

Constellation Energy Group
NINE MILE POINT
NUCLEAR STATION
UNIT 2 - SCRIBA, N.Y.
PIPING & INSTRUMENTATION DIAGRAM
FIRE PROTECTION - WATER

SCALE: NONE DRAWING NO: LR-43E-0