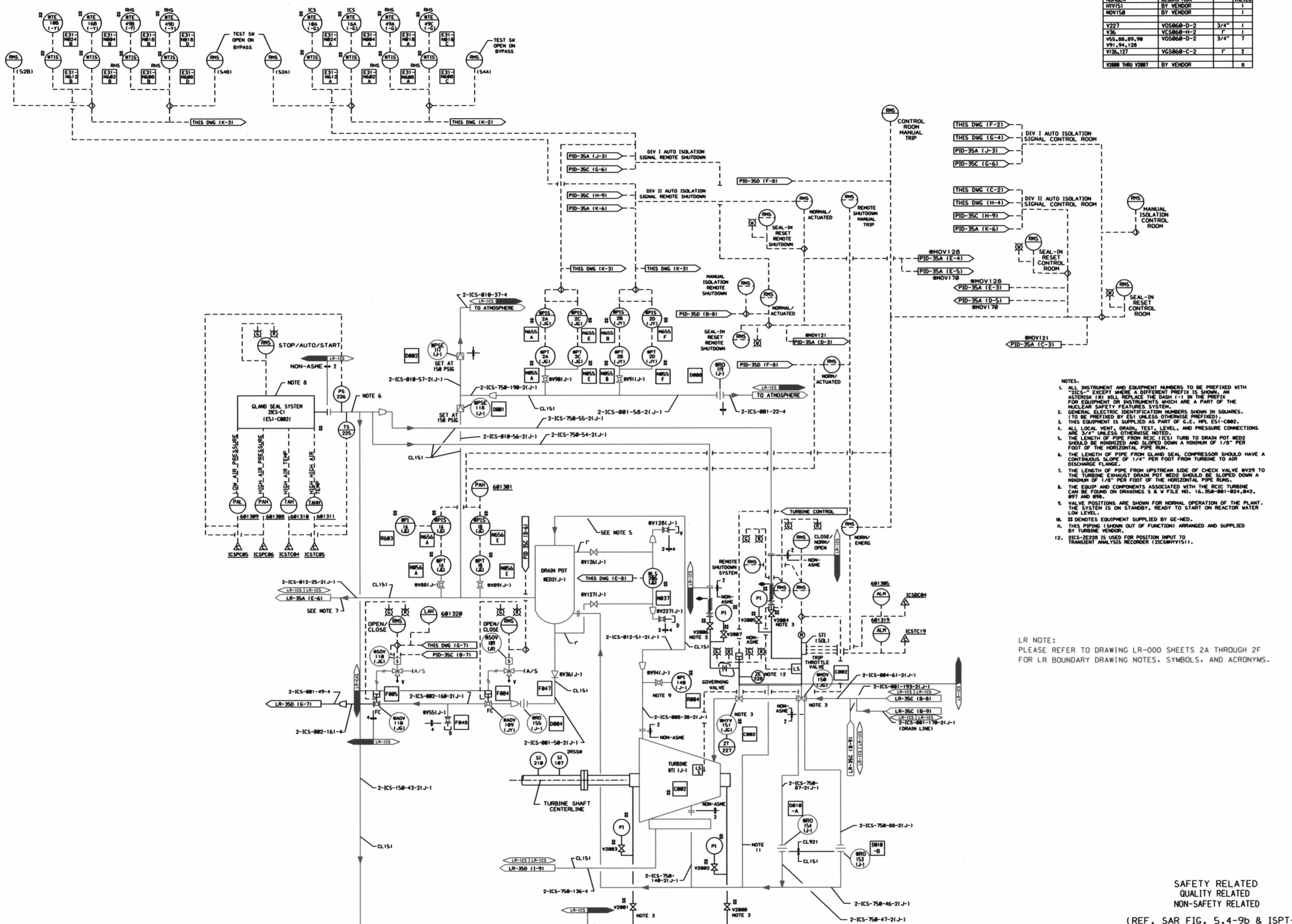


LR-35B-0

MARK NUMBER	VALVE DESCRIPTION	SIZE	NO. OF VALVES
RV151	BY VENDOR		1
RV152	BY VENDOR		1
V227	V05060-D-2	3/4"	1
YS3	VS060-H-2	1"	1
V55,00,09,90	V05060-D-2	3/4"	7
V91,94,126	V05060-D-2	3/4"	7
V75,127	V05060-C-2	1"	7
V200 THRU V207	BY VENDOR		8



- NOTES:
- ALL INSTRUMENT AND EQUIPMENT NUMBERS TO BE PREFIXED WITH "ICS-" EXCEPT WHERE A DIFFERENT PREFIX IS SHOWN. AN ASTERISK (\*) WILL REPLACE THE DASH (-) IN THE PREFIX FOR EQUIPMENT OR INSTRUMENTS WHICH ARE A PART OF THE NUCLEAR SAFETY FEATURES SYSTEM.
  - GENERAL ELECTRIC IDENTIFICATION NUMBERS SHOWN IN SQUARES (TO BE PREFIXED BY ES1 UNLESS OTHERWISE PREFIXED).
  - THIS EQUIPMENT IS SUPPLIED AS PART OF G.E. FILE ES1-0802.
  - ALL LOCAL VENT, DRAIN, TEST, LEVEL, AND PRESSURE CONNECTIONS ARE 3/4" UNLESS OTHERWISE NOTED.
  - THE LENGTH OF PIPE FROM RHC (ICS) TURB TO DRAIN POT RED2 SHOULD BE MINIMIZED AND SLOPED DOWN A MINIMUM OF 1/8" PER FOOT OF THE HORIZONTAL PIPE RUN.
  - THE LENGTH OF PIPE FROM GLAND SEAL COMPRESSOR SHOULD HAVE A CONTINUOUS SLOPE OF 1/4" PER FOOT FROM TURBINE TO AIR DISCHARGE FLANGE.
  - THE LENGTH OF PIPE FROM UPSTREAM SIDE OF CHECK VALVE RV29 TO THE TURBINE EXHAUST DRAIN POT RED2 SHOULD BE SLOPED DOWN A MINIMUM OF 1/8" PER FOOT OF THE HORIZONTAL PIPE RUNS.
  - THE EQUIP AND COMPONENTS ASSOCIATED WITH THE RHC TURBINE CAN BE FOUND ON DRAWINGS 5 & 6 FILE NO. 16.358-001-004,042, 097 AND 095.
  - VALVE POSITIONS ARE SHOWN FOR NORMAL OPERATION OF THE PLANT. THE SYSTEM IS ON STANDBY, READY TO START ON REACTOR WATER LOW LEVEL.
  - \*\* DENOTES EQUIPMENT SUPPLIED BY GE-MED.
  - THIS PIPING IS SHOWN OUT OF FUNCTION) ARRANGED AND SUPPLIED BY TURBINE VENDOR.
  - ICS-2220 IS USED FOR POSITION INPUT TO TRANSIENT ANALYSIS RECORDER (TICRBYT15).

LR NOTE:  
PLEASE REFER TO DRAWING LR-000 SHEETS 2A THROUGH 2F FOR LR BOUNDARY DRAWING NOTES, SYMBOLS, AND ACRONYMS.

THIS DRAWING WAS PRODUCED ELECTRONICALLY. DO NOT MAKE ANY CHANGES MANUALLY.

SAFETY RELATED  
QUALITY RELATED  
NON-SAFETY RELATED

(REF. SAR FIG. 5.4-9b & ISPT-35B)

Constellation Energy Group  
NINE MILE POINT NUCLEAR STATION  
UNIT 2 - SCRIBA, N.Y.  
PIPING & INSTRUMENTATION DIAGRAM  
REACTOR CORE ISOLATION COOLING

SCALE: NONE DRAWING NO: LR-35B-0

DIS7