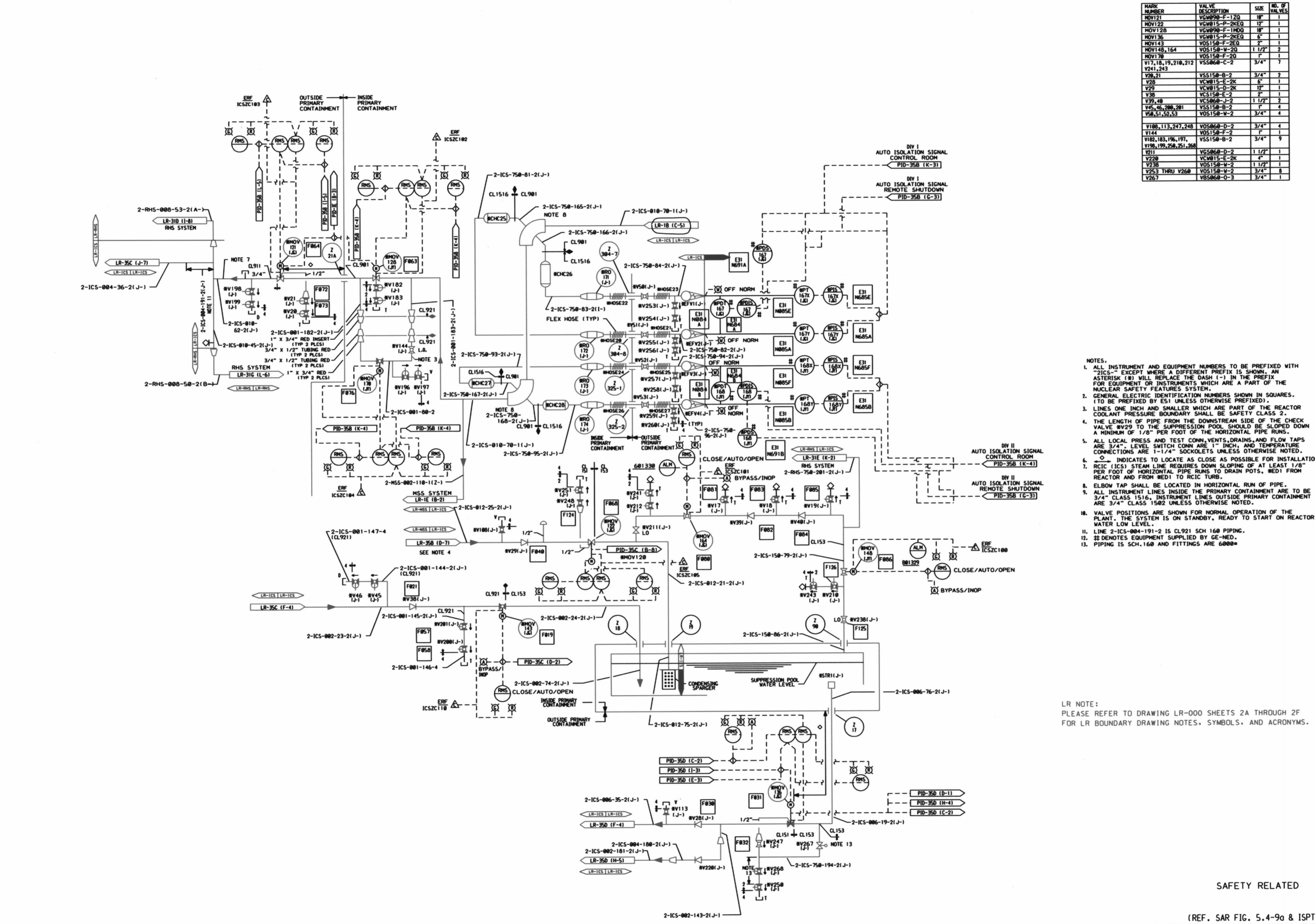


0-VSA-RT



MARK NUMBER	VALVE DESCRIPTION	SIZE	NO. OF VALVES
RV121	VCN815-F-120	12"	1
RV122	VCN815-P-2K2G	12"	1
RV128	VCN815-F-1MDO	12"	1
RV136	VCN815-P-2K2G	6"	1
RV143	VOS158-F-2E0	2"	1
RV148,164	VOS158-W-20	1 1/2"	2
RV178	VOS158-F-20	1"	1
V17,18,19,218,212	VSS868-C-2	3/4"	7
V211,243	VSS158-B-2	3/4"	2
V28	VCN815-D-2K	6"	1
V29	VCN815-D-2K	12"	1
V38	VCN158-E-2	2"	1
V29,48	VCN868-J-2	1 1/2"	2
V45,46,200,281	VSS158-B-2	1"	4
V58,51,52,53	VOS158-W-2	3/4"	4
V188,113,247,248	VOS868-D-2	3/4"	4
V141	VOS158-F-2	1"	1
V18,183,186,191,	VSS158-B-2	3/4"	9
V198,199,258,251,268	VSS868-D-2	1 1/2"	1
V211	VSS868-D-2	1 1/2"	1
V228	VCN815-D-2K	6"	1
V238	VOS158-W-2	1 1/2"	1
V253 THRU V268	VOS158-W-2	3/4"	8
V267	VSS868-D-3	3/4"	1

- NOTES:
- ALL INSTRUMENT AND EQUIPMENT NUMBERS TO BE PREFIXED WITH "2ICS-" EXCEPT WHERE A DIFFERENT PREFIX IS SHOWN. AN ASTERISK (*) WILL REPLACE THE DASH (-) IN THE PREFIX FOR EQUIPMENT OR INSTRUMENTS WHICH ARE A PART OF THE NUCLEAR SAFETY FEATURES SYSTEM.
 - GENERAL ELECTRIC IDENTIFICATION NUMBERS SHOWN IN SQUARES (TO BE PREFIXED BY ESI UNLESS OTHERWISE PREFIXED).
 - PIPES ONE INCH AND SMALLER WHICH ARE PART OF THE REACTOR COOLANT PRESSURE BOUNDARY SHALL BE SAFETY CLASS 2.
 - THE LENGTH OF PIPE FROM THE DOWNSTREAM SIDE OF THE CHECK VALVE RV29 TO THE SUPPRESSION POOL SHOULD BE SLOPED DOWN A MINIMUM OF 1/8" PER FOOT OF THE HORIZONTAL PIPE RUNS.
 - ALL LOCAL PRESS AND TEST CONN, VENTS, DRAINS, AND FLOW TAPS ARE 3/4". LEVEL SWITCH CONN ARE 1" INCH. AND TEMPERATURE CONNECTIONS ARE 1-1/4" SOCKLETS UNLESS OTHERWISE NOTED.
 - INDICATES TO LOCATE AS CLOSE AS POSSIBLE FOR INSTALLATION.
 - RCIC (ICS) STEAM LINE REQUIRES DOWN SLOPING OF AT LEAST 1/8" PER FOOT OF HORIZONTAL PIPE RUNS TO DRAIN POTS. SEDI FROM REACTOR AND FROM SEDI TO RCIC TURB.
 - ELBOW TAP SHALL BE LOCATED IN HORIZONTAL RUN OF PIPE.
 - ALL INSTRUMENT LINES INSIDE THE PRIMARY CONTAINMENT ARE TO BE 3/4" CLASS 1516. INSTRUMENT LINES OUTSIDE PRIMARY CONTAINMENT ARE 3/4" CLASS 1582 UNLESS OTHERWISE NOTED.
 - VALVE POSITIONS ARE SHOWN FOR NORMAL OPERATION OF THE PLANT. THE SYSTEM IS ON STANDBY, READY TO START ON REACTOR WATER LOW LEVEL.
 - LINE 2-ICS-004-191-2 IS CL921 SCH 168 PIPING.
 - ## DENOTES EQUIPMENT SUPPLIED BY GE-NED.
 - PIPING IS SCH.168 AND FITTINGS ARE 6000#

LR NOTE:
PLEASE REFER TO DRAWING LR-000 SHEETS 2A THROUGH 2F FOR LR BOUNDARY DRAWING NOTES, SYMBOLS, AND ACRONYMS.

THIS DRAWING USES STANDARD ELECTRICAL SYMBOLS. DO NOT MAKE ANY CHANGES MANUALLY.

SAFETY RELATED

(REF. SAR FIG. 5.4-9a & ISPT-35A)

Constellation Energy Group
 NINE MILE POINT NUCLEAR STATION
 UNIT 2 - SCRIBA, N.Y.
PIPING & INSTRUMENTATION DIAGRAM
REACTOR CORE ISOLATION COOLING

SCALE: NONE DRAWING NO: LR-35A-0

REV	DATE	DESCRIPTION OF REVISION	M.O.	DFT	DES	CHRD	ENG	EPROC	ELEC	MECH	STR	MF	REV	DATE	DESCRIPTION OF REVISION	M.O.	DFT	DES	CHRD	ENG	ELEC	MECH	STR

D156