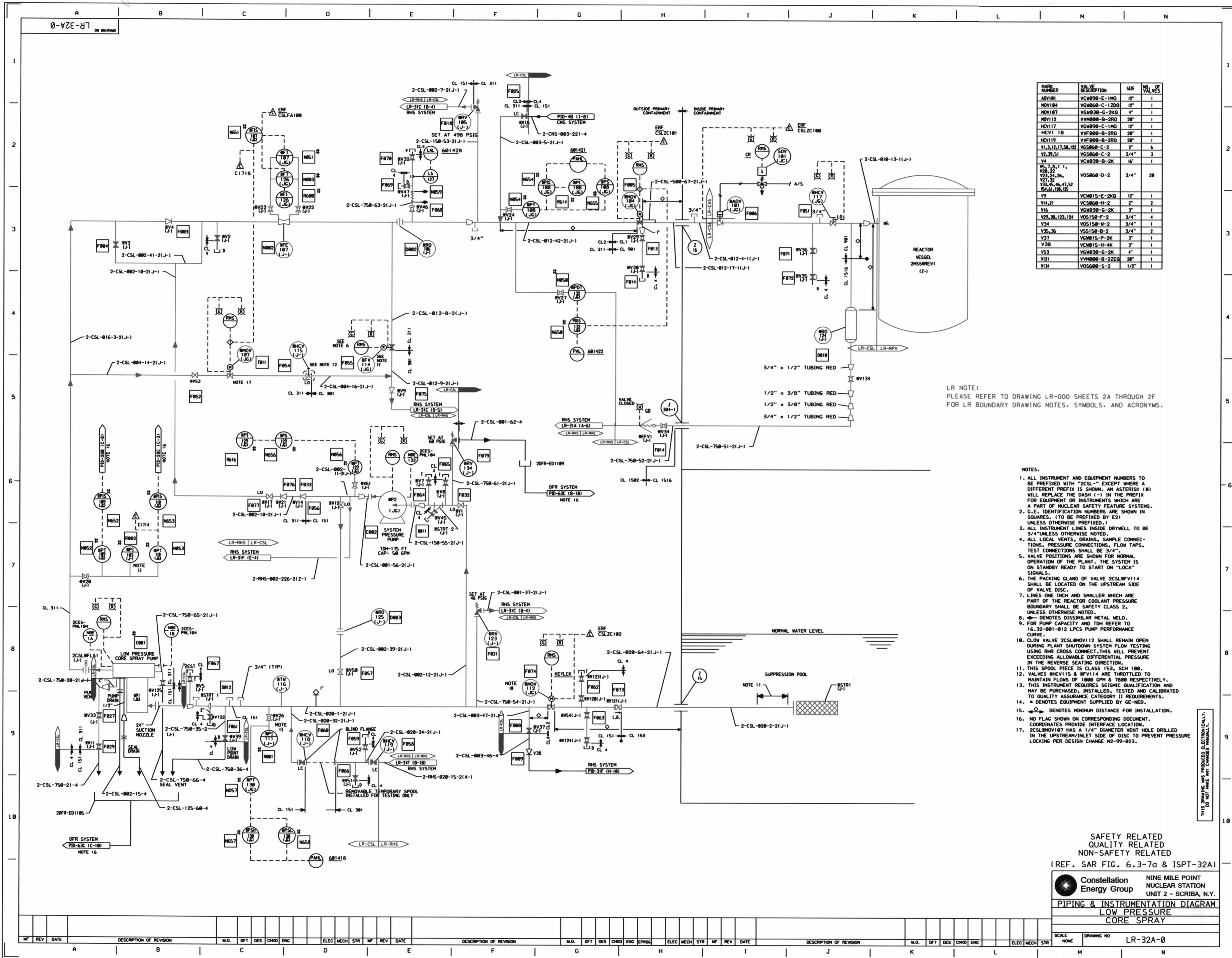


D153



MARK NUMBER	VALVE DESCRIPTION	SIZE	NO. OF VALVES
NOV181	VCM980-E-1MO	12"	1
NOV184	VCM980-C-1ZDO	12"	1
NOV187	VCM980-C-2KO	4"	1
NOV112	VVM980-B-2RO	28"	1
MCV117	VCM980-C-1MO	12"	1
MCV118	VVF980-B-2RO	28"	1
MCV119	VVF980-B-2RO	28"	1
V1,3,12,17,58,122	VCS860-C-2	2"	6
V2,39,51	VCS860-C-2	3/4"	3
V4	VCM980-B-2K	16"	1
V5,7,8,11,19,22,23,24,26,27,28,30,31,32,33,34,35,36,37,38,39,40,41,42,43,44,45,46,47,52,54,55,128,129	VOS860-D-2	3/4"	28
V14,21	VCM980-E-2KO	12"	1
V16	VCM980-H-2	2"	2
V29,38,123,124	VOS150-F-2	3/4"	4
V34	VOS150-W-2	3/4"	1
V35,36	VSS150-B-2	3/4"	2
V37	VCM980-S-P-2K	2"	1
V38	VCM980-H-4K	2"	1
V53	VCM980-B-2K	4"	1
V121	VVM980-B-2ZEQ	28"	1
V134	VOS600-S-2	1/2"	1

LR NOTE:
PLEASE REFER TO DRAWING LR-000 SHEETS 2A THROUGH 2F FOR LR BOUNDARY DRAWING NOTES, SYMBOLS, AND ACRONYMS.

- NOTES:
- ALL INSTRUMENT AND EQUIPMENT NUMBERS TO BE PREFIXED WITH "2CSL-" EXCEPT WHERE A DIFFERENT PREFIX IS SHOWN. AN ASTERISK (*) WILL REPLACE THE DASH (-) IN THE PREFIX FOR EQUIPMENT OR INSTRUMENTS WHICH ARE A PART OF NUCLEAR SAFETY FEATURE SYSTEMS.
 - G.E. IDENTIFICATION NUMBERS ARE SHOWN IN SQUARES. (TO BE PREFIXED BY E21 UNLESS OTHERWISE PREFIXED.)
 - ALL INSTRUMENT LINES INSIDE DRYWELL TO BE 3/4" UNLESS OTHERWISE NOTED.
 - ALL LOCAL VENTS, DRAINS, SAMPLE CONNECTIONS, PRESSURE CONNECTIONS, FLOW TAPS, TEST CONNECTIONS SHALL BE 3/4".
 - VALVE POSITIONS ARE SHOWN FOR NORMAL OPERATION OF THE PLANT. THE SYSTEM IS ON STANDBY READY TO START ON "LOCA" SIGNALS.
 - THE PACKING GLAND OF VALVE 2CSL#FV114 SHALL BE LOCATED ON THE UPSTREAM SIDE OF VALVE DISC.
 - LINES ONE INCH AND SMALLER WHICH ARE PART OF THE REACTOR COOLANT PRESSURE BOUNDARY SHALL BE SAFETY CLASS 2, UNLESS OTHERWISE NOTED.
 - ☉ DENOTES DISSIMILAR METAL WELD.
 - FOR PUMP CAPACITY AND TDH REFER TO 16.32-801-812 LPCS PUMP PERFORMANCE CURVE.
 - CLOW VALVE 2CSL#MOV112 SHALL REMAIN OPEN DURING PLANT SHUTDOWN SYSTEM FLOW TESTING USING RHR CROSS CONNECT. THIS WILL PREVENT EXCEEDING ALLOWABLE DIFFERENTIAL PRESSURE IN THE REVERSE SEATING DIRECTION.
 - THIS SPOOL PIECE IS CLASS 153, SCH 100.
 - VALVES #MCV115 & #FV114 ARE THROTTLED TO MAINTAIN FLOWS OF 1800 GPM & 7000 RESPECTIVELY.
 - THIS INSTRUMENT REQUIRES SEISMIC QUALIFICATION AND MAY BE PURCHASED, INSTALLED, TESTED AND CALIBRATED TO QUALITY ASSURANCE CATEGORY II REQUIREMENTS.
 - * DENOTES EQUIPMENT SUPPLIED BY GE-MED.
 - ⊕ DENOTES MINIMUM DISTANCE FOR INSTALLATION.
 - NO FLAG SHOWN ON CORRESPONDING DOCUMENT. COORDINATES PROVIDE INTERFACE LOCATION.
 - 2CSL#MOV187 HAS A 1/4" DIAMETER VENT HOLE DRILLED IN THE UPSTREAM/PINLET SIDE OF DISC TO PREVENT PRESSURE LOCKING PER DESIGN CHANGE NO-99-023.

SAFETY RELATED
QUALITY RELATED
NON-SAFETY RELATED
(REF. SAR FIG. 6.3-7a & ISPT-32A)

Constellation Energy Group
NINE MILE POINT NUCLEAR STATION
UNIT 2 - SCRIBA, N.Y.
PIPING & INSTRUMENTATION DIAGRAM
LOW PRESSURE CORE SPRAY

SCALE NONE DRAWING NO LR-32A-0

D153