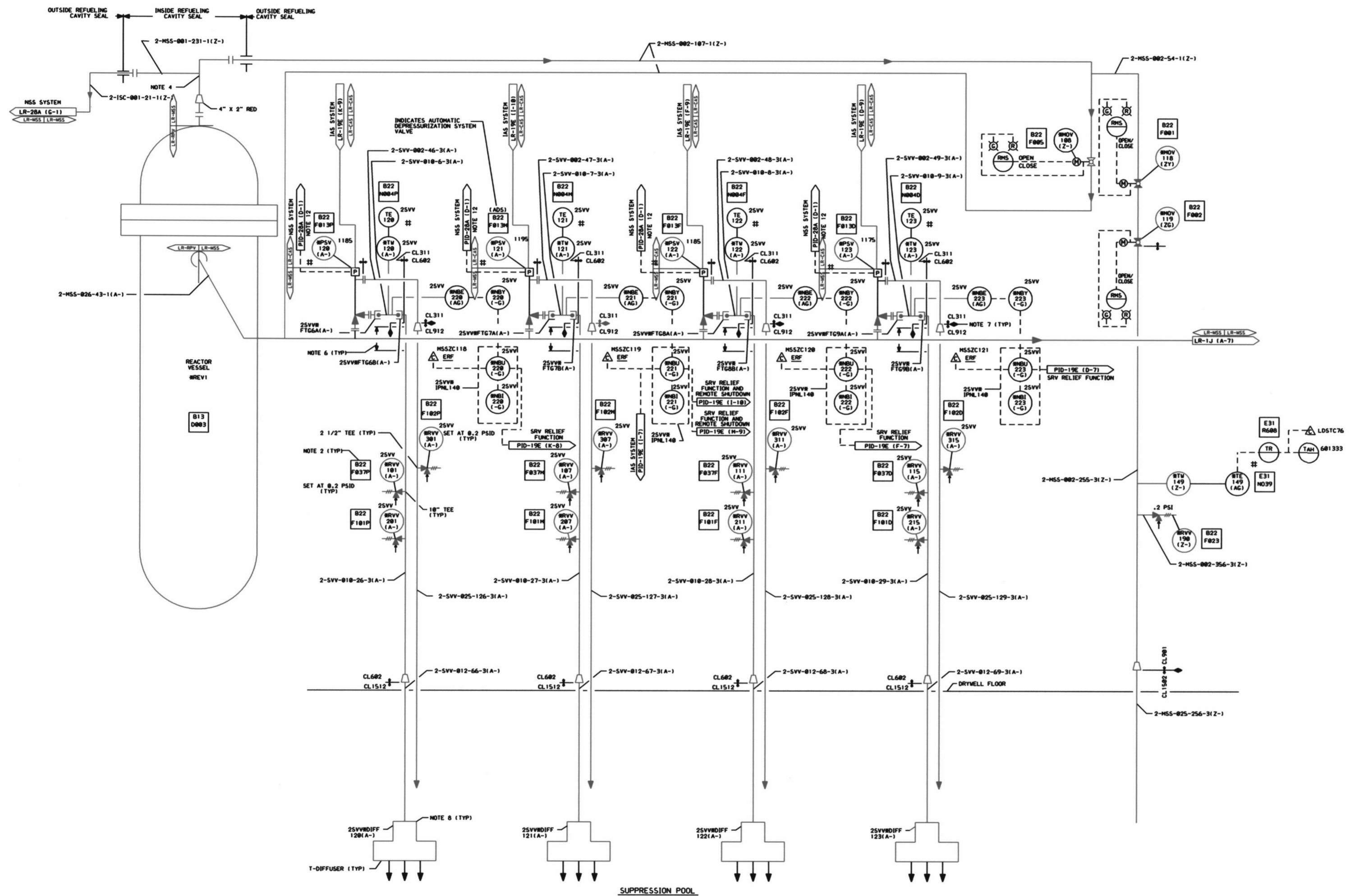


D100

MAIN STEAM SYSTEM VALVE TABLE			
MARK NUMBER	VALVE DESCRIPTION	SIZE	NO. OF VALVES
RVV105,118,119	RVV105B-F-140	2"	3

MAIN STEAM SAFETY/RELIEF VALVES, VENTS AND DRAIN SYSTEM VALVE TABLE "2SVV"			
MARK NUMBER	VALVE DESCRIPTION	SIZE	NO. OF VALVES
RVV101,107,111	RVV101B-2-3J	18"	6
RVV211,215	RVV211B-2-3N	2 1/2"	4

LR NOTE:
PLEASE REFER TO DRAWING LR-000 SHEETS 2A THROUGH 2F
FOR LR BOUNDARY DRAWING NOTES, SYMBOLS, AND ACRONYMS.



- NOTES:
1. ALL INSTRUMENT & EQUIPMENT NUMBERS TO BE PREFIXED WITH "2SVV" EXCEPT WHERE A DIFFERENT PREFIX IS SHOWN. AN ASTERISK (*) WILL REPLACE THE DASH (-) IN THE PREFIX FOR THE EQUIPMENT OR INSTRUMENTS WHICH ARE A PART OF THE NUCLEAR SAFETY FEATURES SYSTEMS.
 2. GENERAL ELECTRIC IDENTIFICATION NUMBERS ARE SHOWN IN SQUARES.
 3. ALL PIPING SHALL BE CLASS 901 UNLESS OTHERWISE NOTED.
 4. LOCATE FLANGES AT TOP OF REFUELING CAVITY SEAL PENETRATIONS. LOCATE TEE AS CLOSE AS POSSIBLE TO REACTOR VESSEL.
 5. SPRING SET PRESSURE SHOWN ADJACENT TO RELIEF VALVE (PSIG).
 6. CLASS 602 SS PIPE WITH 9.977" ID X 1.025" MINIMUM WALL THICKNESS.
 7. \diamond DENOTES DISSIMILAR METAL WELD.
 8. 1-DIFFUSER PIPING IS STAINLESS STEEL MATERIAL SA350 CL-1, TP-304L, WITH 12 3/4" O.D., X 1" MIN WALL THICKNESS.
 9. # DENOTES SUPPLIED BY GE-MED.
 10. ALL CLASS 1 PIPING 2" AND SMALLER SHALL HAVE BUTT WELD FITTINGS.
 11. VENT AND DRAIN LINES SHALL SLOPE CONTINUOUSLY DOWNWARD.
 12. NO FLAG SHOWN ON CORRESPONDING DOCUMENT. COORDINATES PROVIDE INTERFACE LOCATION.

THIS DRAWING WAS PRODUCED ELECTRONICALLY. DO NOT MAKE ANY CHANGES MANUALLY.

SAFETY RELATED
(REF. SAR FIG. 10.1-3a & ISPT-1A)

Constellation Energy Group
NINE MILE POINT NUCLEAR STATION
UNIT 2 - SCRIBA, N.Y.
PIPING & INSTRUMENTATION DIAGRAM
MAIN STEAM

REV	DATE	DESCRIPTION OF REVISION	M.O.	DFT	DES	CHKD	END	ELEC	MECH	STR	WF	REV	DATE	DESCRIPTION OF REVISION	M.O.	DFT	DES	CHKD	END	ELEC	MECH	STR	WF	REV	DATE	DESCRIPTION OF REVISION	M.O.	DFT	DES	CHKD	END	ELEC	MECH	STR	WF	SCALE	DRAWING NO.
																																				NONE	LR-1A-0

D-100