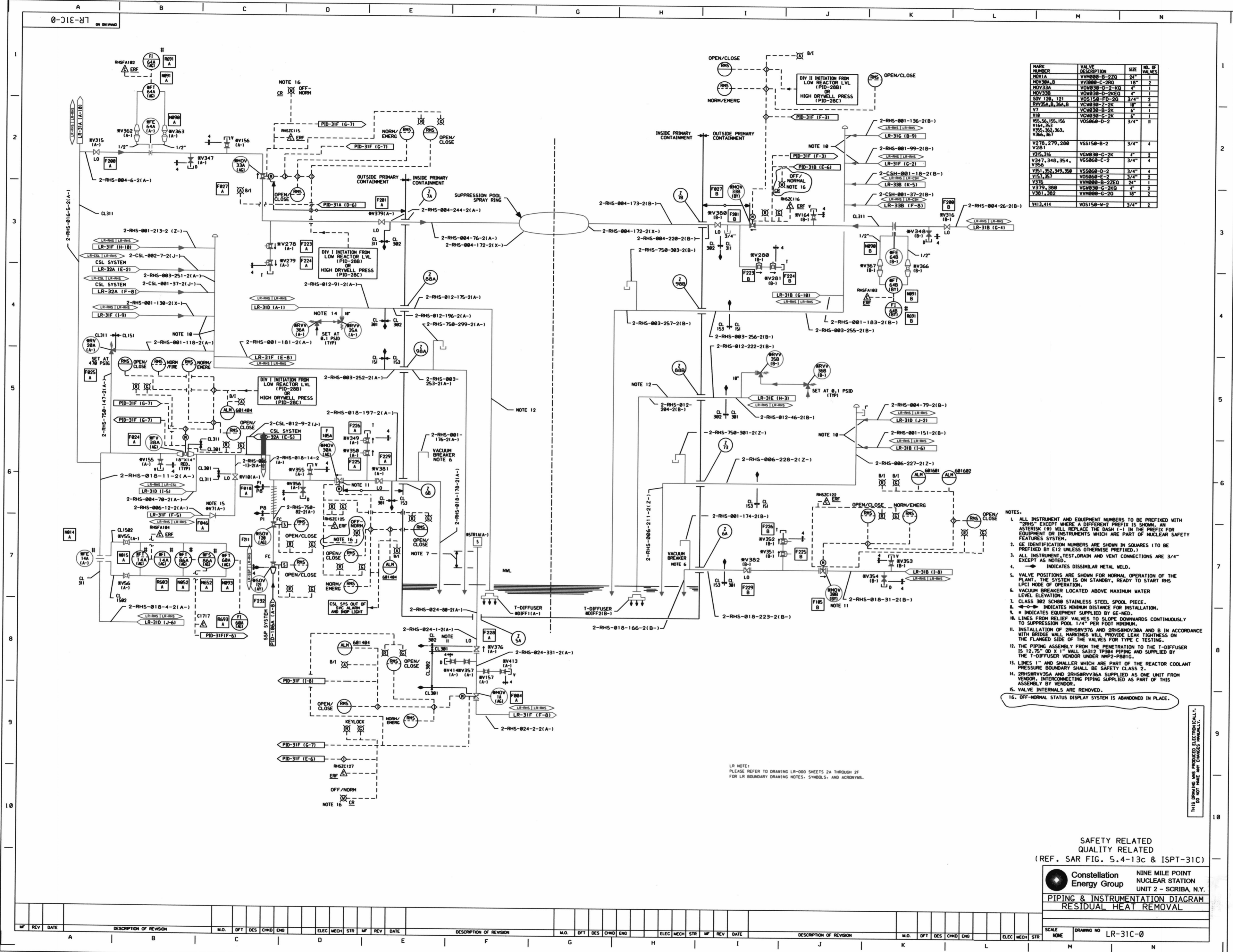


D138



MARK NUMBER	VALVE DESCRIPTION	SIZE	NO. OF VALVES
MOV1A	VVW000-B-22Q	24"	1
MOV30A,B	VVW000-C-20Q	18"	2
MOV33A	VW030-D-2-KO	4"	1
MOV33B	VW030-D-2KEQ	4"	1
SDV 128, 121	VDS150-FD-2Q	3/4"	2
RV35A,B,36A,B	VCW030-Z-2K	18"	4
V7	VCW030-B-2K	6"	1
V18	VCW030-C-2K	6"	1
V56,155,156	VDS060-D-2	3/4"	3
V164,363	VSS150-B-2	3/4"	4
V366,367	VSS060-C-2	3/4"	4
V278,279,280	VSS150-B-2	3/4"	4
V261	VCW030-C-2K	6"	2
V347,348,354,356	VSS060-C-2	3/4"	4
V351,352	VSS060-D-2	3/4"	4
V151,357	VDS060-E-2	3/4"	2
V376	VVW000-B-22EQ	24"	1
V379,380	VCW030-C-2KQ	6"	2
V381,382	VVW000-C-2Q	18"	2
V413,414	VDS150-W-2	3/4"	2

- NOTES:
- ALL INSTRUMENT AND EQUIPMENT NUMBERS TO BE PREFIXED WITH "RHS" EXCEPT WHERE A DIFFERENT PREFIX IS SHOWN. AN ASTERISK (*) WILL REPLACE THE DASH (-) IN THE PREFIX FOR EQUIPMENT OR INSTRUMENTS WHICH ARE PART OF NUCLEAR SAFETY FEATURES SYSTEM.
 - GE IDENTIFICATION NUMBERS ARE SHOWN IN SQUARES (TO BE PREFIXED BY E12 UNLESS OTHERWISE PREFIXED.)
 - ALL INSTRUMENT, TEST, DRAIN AND VENT CONNECTIONS ARE 3/4" EXCEPT AS NOTED.
 - INDICATES DISSIMILAR METAL WELD.
 - VALVE POSITIONS ARE SHOWN FOR NORMAL OPERATION OF THE PLANT. THE SYSTEM IS ON STANDBY, READY TO START RHS LPCI MODE OF OPERATION.
 - VACUUM BREAKER LOCATED ABOVE MAXIMUM WATER LEVEL ELEVATION.
 - CLASS 302 STAINLESS STEEL SPOOL PIECE.
 - ← INDICATES MINIMUM DISTANCE FOR INSTALLATION.
 - ≡ INDICATES EQUIPMENT SUPPLIED BY GE-NEC.
 - LINE FROM RELIEF VALVES TO SLOPE DOWNWARDS CONTINUOUSLY TO SUPPRESSION POOL 1/4" PER FOOT MINIMUM.
 - INSTALLATION OF 2RHSRV376 AND 2RHSRV38A AND B IN ACCORDANCE WITH BRIDGE WALL MARKINGS WILL PROVIDE LEAK TIGHTNESS ON THE FLANGED SIDE OF THE VALVES FOR TYPE C TESTING.
 - THE PIPING ASSEMBLY FROM THE PENETRATION TO THE T-DIFFUSER IS 12.75" OD X 1" WALL SA312 TP304 PIPING AND SUPPLIED BY THE T-DIFFUSER VENDOR UNDER NWP2-P081C.
 - LINE 1" AND SMALLER WHICH ARE PART OF THE REACTOR COOLANT PRESSURE BOUNDARY SHALL BE SAFETY CLASS 2.
 - 2RHSRV35A AND 2RHSRV36A SUPPLIED AS ONE UNIT FROM VENDOR. INTERCONNECTING PIPING SUPPLIED AS PART OF THIS ASSEMBLY BY VENDOR.
 - VALVE INTERLOCKS ARE REMOVED.
 - OFF-NORMAL STATUS DISPLAY SYSTEM IS ABANDONED IN PLACE.

LR NOTE:
PLEASE REFER TO DRAWING LR-000 SHEETS 2A THROUGH 2F FOR LR BOUNDARY DRAWING NOTES, SYMBOLS, AND ACRONYMS.

THIS DRAWING HAS PRODUCED ELECTRONICALLY. DO NOT MAKE ANY CHANGES MANUALLY.

SAFETY RELATED
QUALITY RELATED
(REF. SAR FIG. 5.4-13c & ISPT-31C)

Constellation Energy Group
NINE MILE POINT NUCLEAR STATION
UNIT 2 - SCRIBA, N.Y.
PIPING & INSTRUMENTATION DIAGRAM
RESIDUAL HEAT REMOVAL

SCALE: NONE DRAWING NO: LR-31C-0

D148