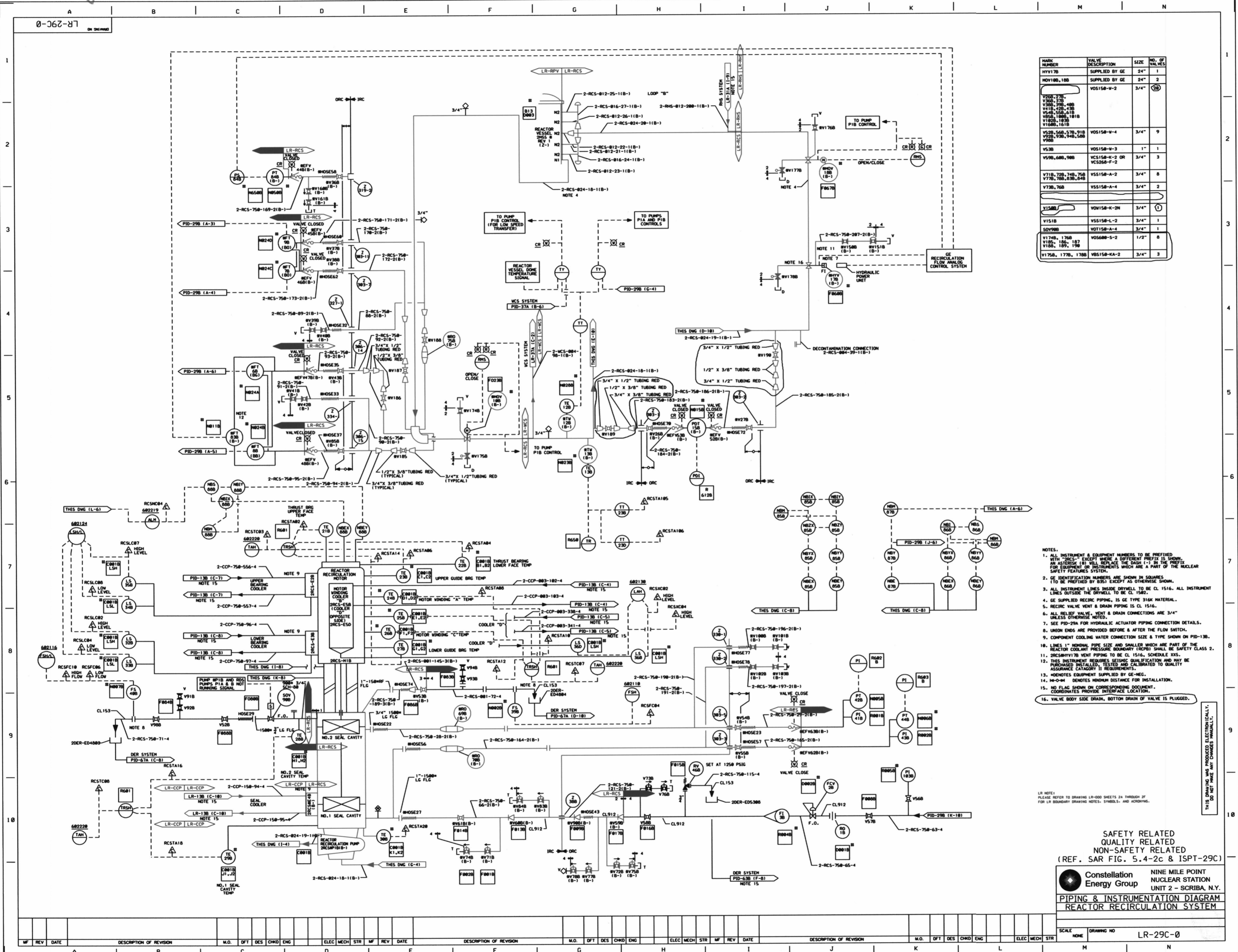


2112



MARK NUMBER	VALVE DESCRIPTION	SIZE	NO. OF VALVES
HV176	SUPPLIED BY GE	24"	1
NOV100,108	SUPPLIED BY GE	24"	2
V200,270, V260,270, V360,390,400, V410,420,430, V540,560,610, V650,1000,1010, V1000,1030, V1000,1010	V0150-V-2	3/4"	20
V520,540,570,910, V520,930,940,500, V900	V0150-V-4	3/4"	9
V530	V0150-V-3	1"	1
V590,640,900	V0150-K-2 OR V0200-F-2	3/4"	3
V710,720,740,750, V770,780,830,840	V0150-A-2	3/4"	8
V730,760	V0150-A-4	3/4"	2
V1500	V0150-K-2H	3/4"	1
V1510	V0150-L-2	3/4"	1
SOV908	V0150-A-4	3/4"	1
V1740,1760, V180,182, V180,189,190	V0500-S-2	1/2"	8
V1750,1770,1780	V0150-KA-2	3/4"	3

- NOTES:
- ALL INSTRUMENT & EQUIPMENT NUMBERS TO BE PREFIXED WITH "RCS-" EXCEPT WHERE A DIFFERENT PREFIX IS SHOWN. AN ASTERISK (*) WILL REPLACE THE DASH (-) IN THE PREFIX FOR EQUIPMENT OF INSTRUMENTS WHICH ARE A PART OF THE NUCLEAR SAFETY FEATURES SYSTEM.
 - GE IDENTIFICATION NUMBERS ARE SHOWN IN SQUARES. (TO BE PREFIXED BY B30) EXCEPT AS OTHERWISE SHOWN.
 - ALL INSTRUMENT LINES INSIDE DRYWELL TO BE CL 1516. ALL INSTRUMENT LINES OUTSIDE THE DRYWELL TO BE CL 1502.
 - GE SUPPLIED RECIRC PIPING, IS GE TYPE 316L MATERIAL.
 - RECIRC VALVE VENT & DRAIN PIPING IS CL 1516.
 - ALL RELIEF VALVE, VENT & DRAIN CONNECTIONS ARE 3/4" UNLESS OTHERWISE NOTED.
 - SEE PID-29A FOR HYDRAULIC ACTUATOR PIPING CONNECTION DETAILS.
 - COMPONENT COOLING WATER CONNECTION SIZE & TYPE SHOWN ON PID-130.
 - LINES 1" NOMINAL PIPE SIZE AND SMALLER WHICH ARE PART OF THE REACTOR COOLANT PRESSURE BOUNDARY (RCPB) SHALL BE SAFETY CLASS 2.
 - 2RCS/RTV170 VENT PIPING TO BE CL 1516, SCHEDULE XXS.
 - THIS INSTRUMENT REQUIRES SEISMIC QUALIFICATION AND MAY BE ENLARGED INSTALLED, TESTED AND CALIBRATED TO QUALITY ASSURANCE CATEGORY II REQUIREMENTS.
 - INDICATES EQUIPMENT SUPPLIED BY GE-REC.
 - 4M-04 DENOTES MINIMUM DISTANCE FOR INSTALLATION.
 - NO FLAG SHOWN ON CORRESPONDING DOCUMENT. COORDINATES PROVIDE INTERFACE LOCATION.
 - VALVE BODY SIZE DRAIN, BOTTOM DRAIN OF VALVE IS PLUGGED.

LR NOTE:
PLEASE REFER TO DRAWING LR-000 SHEETS 2A THROUGH 2F FOR LR BOUNDARY DRAWING NOTES, SYMBOLS, AND ACRONYMS.

SAFETY RELATED
QUALITY RELATED
NON-SAFETY RELATED
(REF. SAR FIG. 5.4-2c & ISPT-29C)

Constellation Energy Group
 NINE MILE POINT
 NUCLEAR STATION
 UNIT 2 - SCRIBA, NY.
PIPING & INSTRUMENTATION DIAGRAM
REACTOR RECIRCULATION SYSTEM

SCALE: NONE DRAWING NO: LR-29C-0