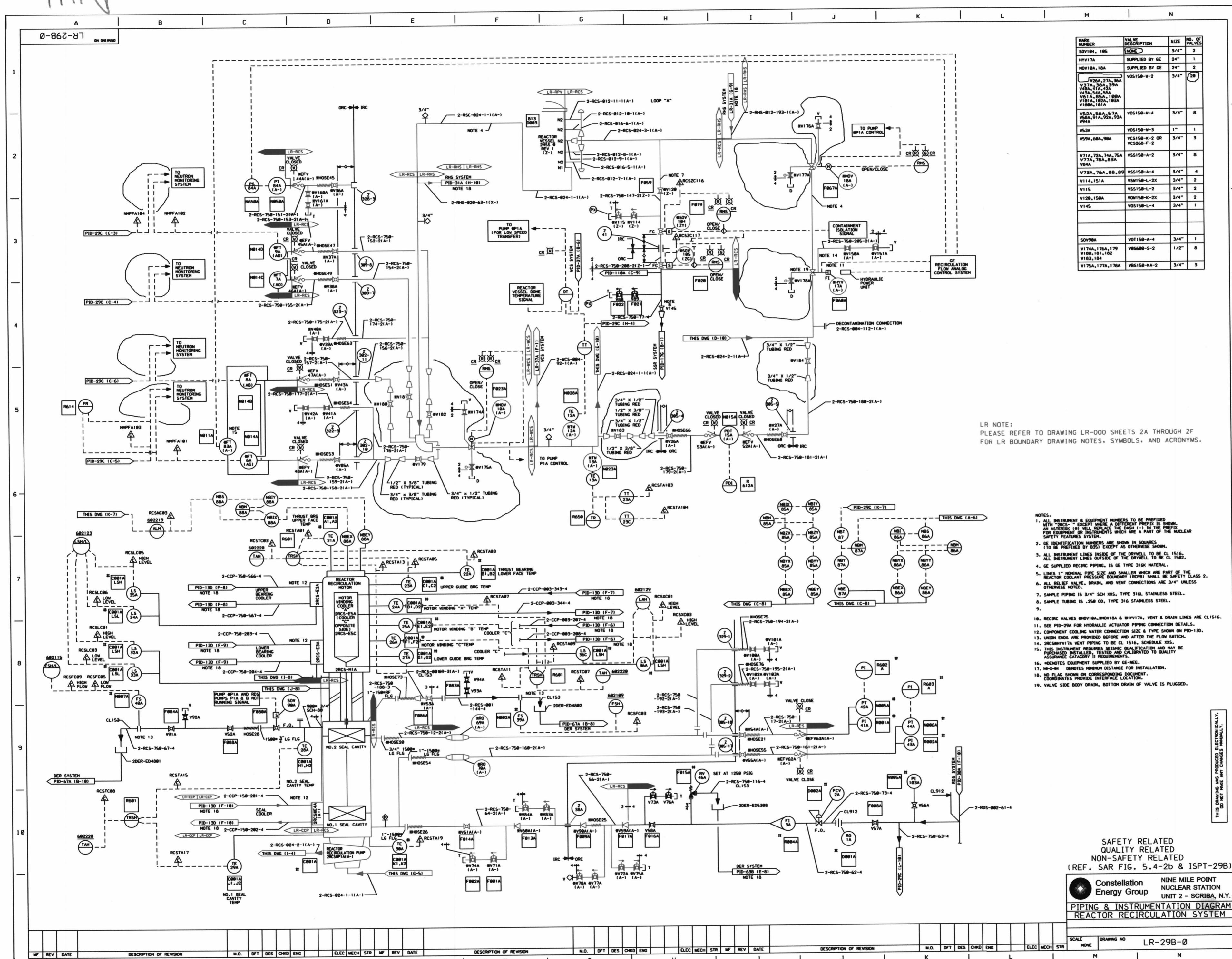


1110

0-862-9L



MARK NUMBER	VALVE DESCRIPTION	SIZE	NO. OF VALVES
SOV104, 105	(NONE)	3/4"	2
HYV17A	SUPPLIED BY GE	2"	1
MOV18A, 18A	SUPPLIED BY GE	2"	2
V73A, 73A, 74A, 75A, 76A, 77A, 78A, 79A, 80A, 81A, 82A, 83A, 84A, 85A, 86A, 87A, 88A, 89A, 90A, 91A, 92A, 93A, 94A	VO5150-N-2	3/4"	90
V52A, 52A, 53A, 54A, 55A, 56A, 57A, 58A, 59A	VO5150-N-4	3/4"	8
V53A	VO5150-N-3	1"	1
V59A, 60A, 90A	VO5150-K-2 OR VC5060-F-2	3/4"	3
V71A, 72A, 74A, 75A, 77A, 78A, 83A, 84A	V05150-A-2	3/4"	8
V73A, 76A, 80, 89	V05150-A-4	3/4"	4
V114, 151A	V05150-L-2X	3/4"	2
V115	V05150-L-2	3/4"	2
V120, 150A	V05150-K-2X	3/4"	2
V145	V05150-L-4	3/4"	1
SOV90A	V0T150-A-4	3/4"	1
V174A, 176A, 179, V180A, 181, 182, V183, 184	V05600-S-2	1/2"	8
V175A, 177A, 178A	V05150-KA-2	3/4"	3

LR NOTE:
PLEASE REFER TO DRAWING LR-000 SHEETS 2A THROUGH 2F
FOR LR BOUNDARY DRAWING NOTES, AND ACRONYMS.

- NOTES:
1. ALL INSTRUMENT & EQUIPMENT NUMBERS TO BE PREFIXED WITH "RCS-" EXCEPT WHERE A DIFFERENT PREFIX IS SHOWN. AN ALTERNATE (A) WILL REPLACE THE DASH (-) IN THE PREFIX FOR EQUIPMENT OR INSTRUMENTS WHICH ARE A PART OF THE NUCLEAR SAFETY FEATURES SYSTEM.
 2. GE IDENTIFICATION NUMBERS ARE SHOWN IN SQUARES (TO BE PREFIXED BY 635) EXCEPT AS OTHERWISE SHOWN.
 3. ALL INSTRUMENT LINES INSIDE OF THE DOMEHILL TO BE CL 1516. ALL INSTRUMENT LINES OUTSIDE OF THE DOMEHILL TO BE CL 1582.
 4. GE SUPPLIED RECIRC PIPING IS GE TYPE 316L MATERIAL.
 5. LINES 1" NOMINAL PIPE SIZE AND SMALLER WHICH ARE PART OF THE REACTOR COOLANT PRESSURE BOUNDARY (RCPB) SHALL BE SAFETY CLASS 2.
 6. ALL RELIEF VALVE, DRAIN, AND VENT CONNECTIONS ARE 3/4" UNLESS OTHERWISE NOTED.
 7. SAMPLE PIPING IS 3/4" SCH 40S, TYPE 316 STAINLESS STEEL.
 8. SAMPLE TUBING IS .250 OD, TYPE 316 STAINLESS STEEL.
 - 9.
 10. RECIRC VALVES MOV18A, MOV18B, & MOV17A, VENT & DRAIN LINES ARE CL1516.
 11. SEE PID-29A FOR HYDRAULIC ACTUATOR PIPING CONNECTION DETAILS.
 12. COMPONENT COOLING WATER CONNECTION SIZE & TYPE SHOWN ON PID-130.
 13. UNION ENDS ARE PROVIDED BEFORE AND AFTER THE FLOW SWITCH.
 14. RCS-RTV17A VENT PIPING TO BE CL 1516, SCHEDULE 40S.
 15. THIS INSTRUMENT REQUIRES SEISMIC QUALIFICATION AND MAY BE PURCHASED INSTALLED, TESTED AND CALIBRATED TO QUALITY ASSURANCE CATEGORY 11 REQUIREMENTS.
 16. #DENOTES EQUIPMENT SUPPLIED BY GE-NEC.
 17. H-O-M# DENOTES MINIMUM DISTANCE FOR INSTALLATION.
 18. NO FLAG SHOWN ON CORRESPONDING DOCUMENT. COORDINATES PROVIDE INTERFACE LOCATION.
 19. VALVE SIDE BODY DRAIN, BOTTOM DRAIN OF VALVE IS PLUGGED.

SAFETY RELATED
QUALITY RELATED
NON-SAFETY RELATED
(REF. SAR FIG. 5.4-2b & ISPT-29B)

Constellation Energy Group NINE MILE POINT NUCLEAR STATION UNIT 2 - SCRIBA, N.Y.
PIPING & INSTRUMENTATION DIAGRAM
REACTOR RECIRCULATION SYSTEM

SCALE: NONE DRAWING NO: LR-29B-0