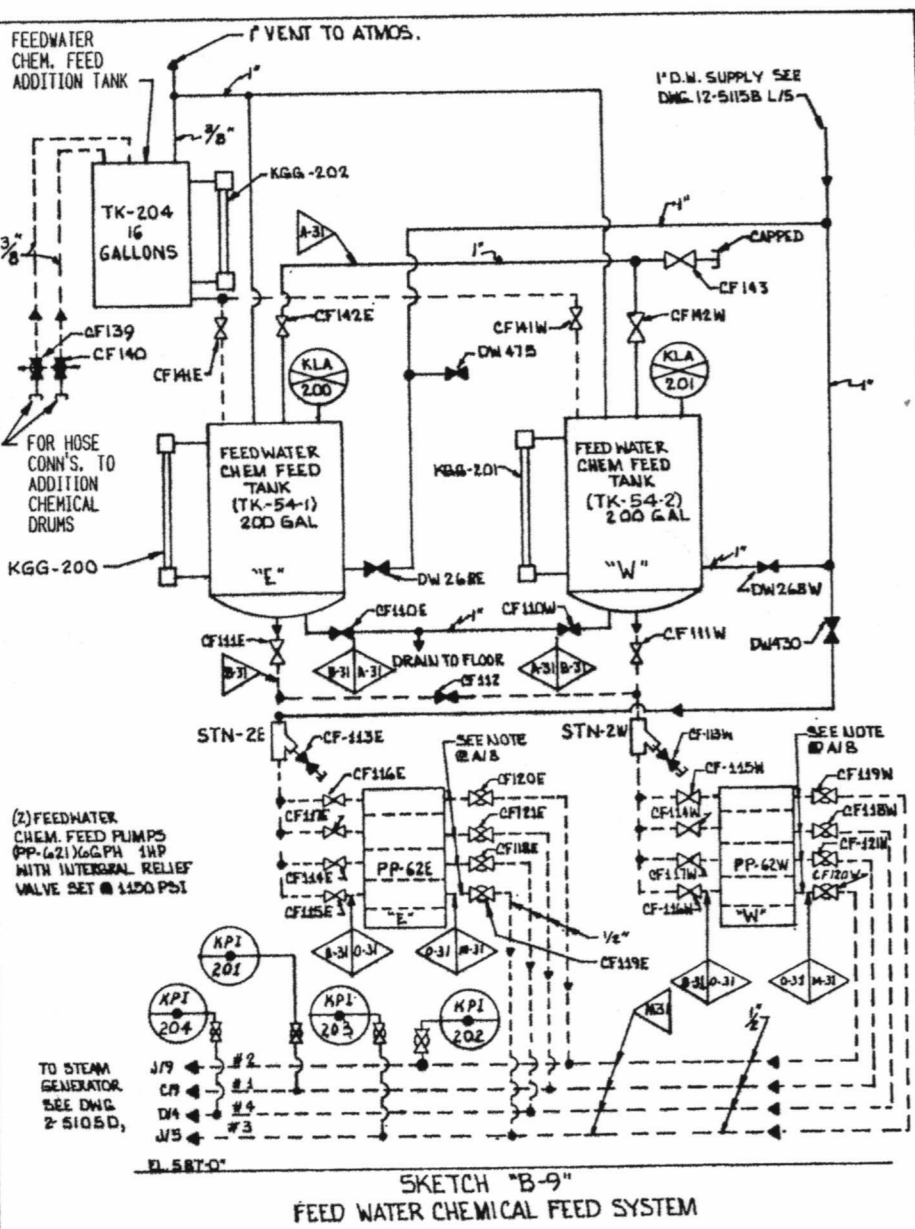
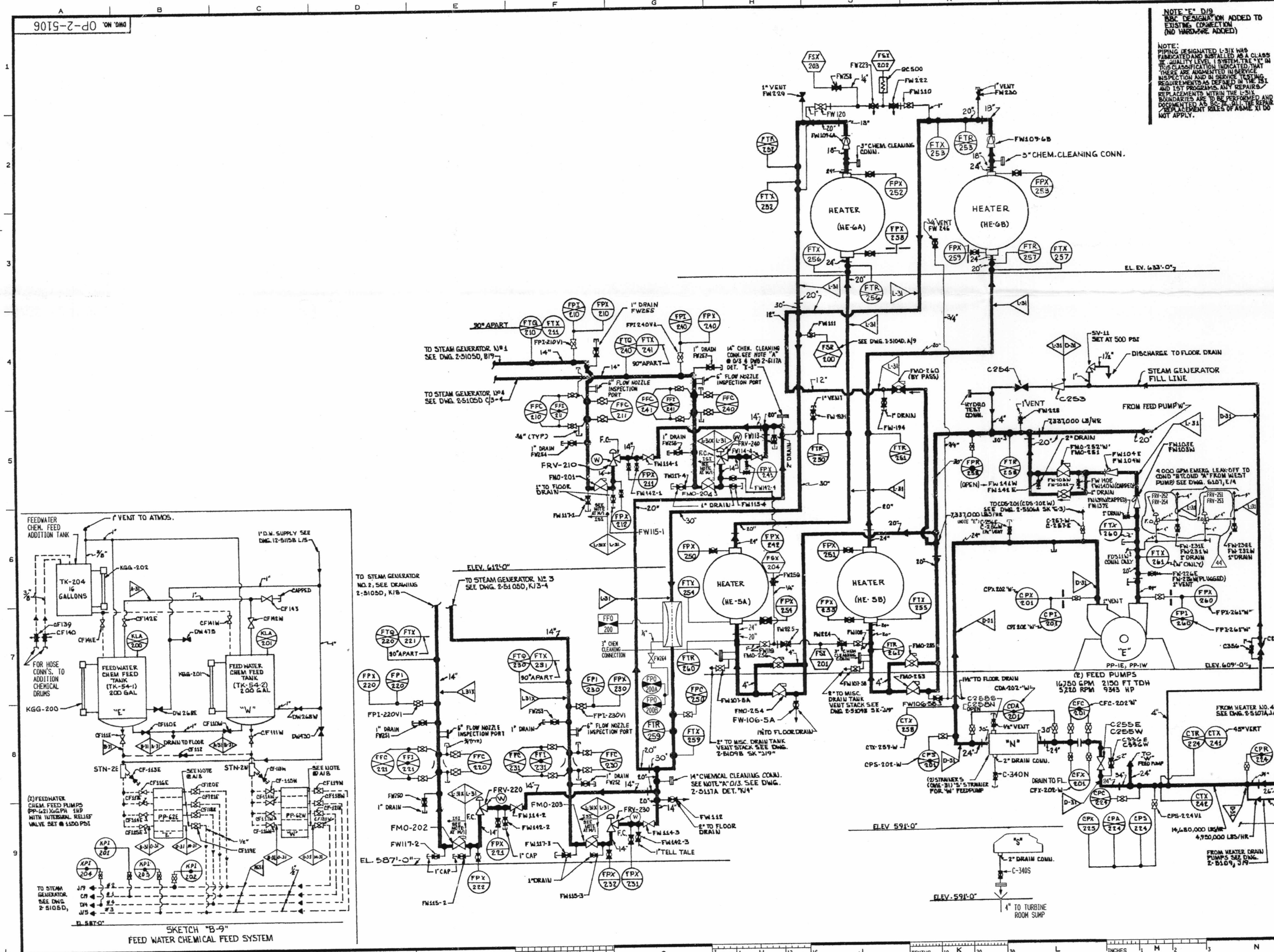


9019-Z-d0 ON 090



NOTE "E" D/S
 SEE DESCRIPTION ADDED TO EXISTING CONNECTION (NO HARDWARE ADDED)

NOTE:
 PIPING DESIGNATED L-31X HAS BEEN REDESIGNED AND RECLASSIFIED AS A CLASS 2 QUALITY LEVEL SYSTEM. THIS CLASSIFICATION INDICATES THAT THESE ARE HIGHLY STRESS INSERVICE REQUIREMENTS AND IN SERVICE INSPECTION AND REPAIRS WITHIN THE L-31X BOUNDARIES ARE TO BE PERFORMED AND DOCUMENTED AS SUCH. ALL THE REQUIREMENTS OF ASME AT DO NOT APPLY.

GENERAL NOTES

- UNLESS OTHERWISE NOTED ON THIS DRAWING, REFER TO DRAWING 12-5104 FOR "HAND OPERATED VALVE IDENTIFICATION" NOTES.
- THE UNIT PREFIX DESIGNATION FOR EACH COMPONENT IDENTIFICATION NO. IS "2".

LEGEND

- FEED WATER
- - - - - AUX. PIPING
- - - - - CHEM. FEED PIPING

FOR VALVE INSTRUMENT SAMPLING, SAMPLING PIPE MATERIAL AND OTHER SYMBOLS NOT EXPLAINED ON THIS DWS. AND FOR MARK NUMBER CODES, SEE DWS. 12-5103, 5104.

NOTE:
 ALL EQUIPMENT SEISMIC CLASS IS EXCEPT AS NOTED.

QUANTITIES PER G.E. CO. HEAT BALANCE 311MB124 V.M.D. REVISED 3-25-68 4 B.B. CO. HEAT BALANCE DISCARD DATED 12-17-68 AT MAX. REACTOR POWER.

NOTE "A" H/S, D/S
 CHEMICAL CLEANING CONNECTIONS PROVIDED FOR CONDENSATE FEEDWATER SYSTEM CHEMICAL CLEANING. SEE DWS. 2-5109B FOR MISC. DRAIN'S & HEATERS (6-A VENTS, DRAINS, ETC.)

NOTE "C"
 FOR CODE CLASS 2 INSTRUMENT CONNECTIONS THE ISA BOUNDARY EXTENDS TO AND INCLUDES THE FIRST ROOT VALVE.

NOTE "D"
 FOR CODE CLASS 2 VENTS AND DRAINS THE ISA BOUNDARY EXTENDS TO AND INCLUDES THE FIRST NORMALLY CLOSED VALVE.

NOTE "E"
 PIPE CAP & NIPPLE IS APPLICABLE TO VALVE C-256E ONLY.

| NO. | REVISION | DESCRIPTION | DATE | BY | CHKD. | APPD. |
|-----|----------|---|------|----|-------|-------|
| 44 | REVISED | 140 GPM FROM FRY-201 & 20W TO FRY-202 & 20W, SIZE OF VALVE FRY-201, 202 AND 20W FROM 1" TO 1/2" AND PIPING RELATED AT P-100, PER 2-5103-201-01. | | | | |
| 43 | ADDED | FEEDWATER FLOW COMPENSATOR INSTRUMENT FRY-201 AND VALVE FRY-201 # 6/7 PER 2-5103-201-01. | | | | |
| 42 | REVISED | INSTRUMENT FRY-201 LOCATION FROM DOWNSTREAM OF INSTRUMENT FRY-202 TO UPSTREAM OF INSTRUMENT FRY-202 PER 2-5103-201-01. | | | | |
| 41 | ADDED | PIPE CAP & NIPPLE FOR C-256E ONLY AT 6/8 AND NOTE "E" AT 6/8 PER 2-5103-201-01. | | | | |
| 40 | REVISED | DRAIN CONNECTION AT 6/8 & 8/8 STRAINER'S & 8/8 PER 2-5103-201-01. | | | | |
| 39 | REVISED | IT REVISION RECORD FOR VALVE DATA SEE FOR VALVE IDENTIFICATION NUMBERS AT 6/8-1. | | | | |
| | | REVISED DESCRIPTION OF TANK AT C-256E, PER 2-5103-201-01. | | | | |

FILENAME: 90-2-5106-44
 (Master File): 90-2-5106-44-01

THIS DRAWING IS THE PROPERTY OF THE AMERICAN ELECTRIC POWER SERVICE COMPANY AND IS LOANED UPON CONDITION THAT IT IS NOT TO BE REPRODUCED OR COPIED, IN WHOLE OR IN PART, OR USED FOR ANY PURPOSE WITHOUT THE WRITTEN CONSENT OF THE AMERICAN ELECTRIC POWER SERVICE COMPANY. IT IS TO BE RETURNED UPON REQUEST.

DONALD C. COOK
 INDIANAPOLIS, INDIANA
 NUCLEAR PLANT

FLOW DIAGRAM FEEDWATER UNIT NO. 2

DWS. NO. OP-2-5106-44

| | | | |
|------|------|------|-----|
| ARCH | ELEC | MECH | STR |
| | | | |

DESIGN ENGINEER DIVISION
 REFER TO OPER. AND MAINT. MANUALS FOR INSTRUMENTATION AND VALVE IDENTIFICATION.

APP. SERVICE CORP.
 1 UNIVERSITY PLAZA
 COLUMBUS, OH. 43221

DATE: 12-17-68

SCALE: AS SHOWN

INCHES: 1" = 10'

D-02