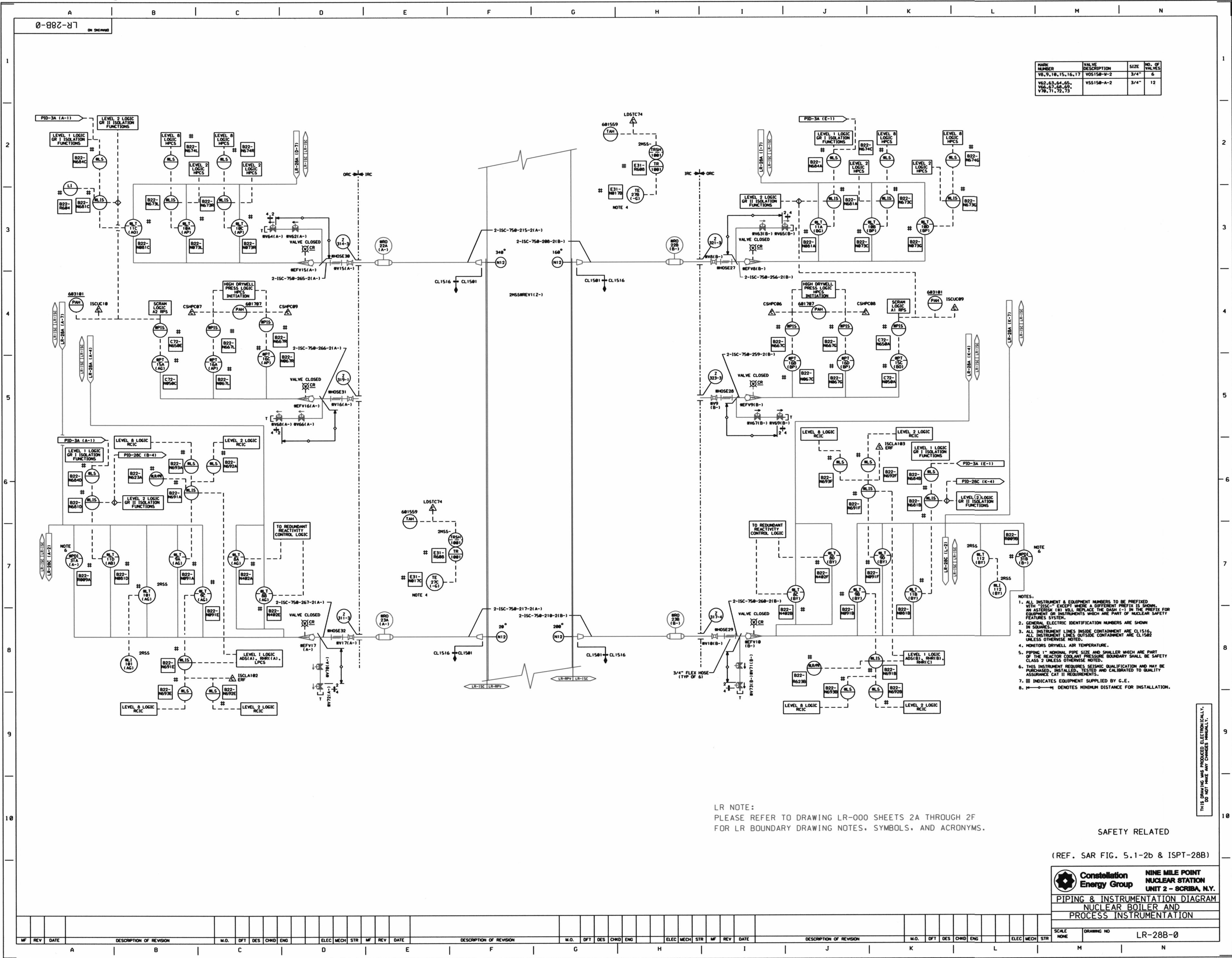


138



VALVE NUMBER	VALVE DESCRIPTION	SIZE	NO. OF VALVES
V8, 9, 10, 15, 16, 17	V05150-W-2	3/4"	6
V62, 63, 64, 65, V66, 67, 68, 69, V70, 71, 72, 73	V55150-A-2	3/4"	12

- NOTES:
1. ALL INSTRUMENT & EQUIPMENT NUMBERS TO BE PREFIXED WITH "2-ISC-" EXCEPT WHERE A DIFFERENT PREFIX IS SHOWN IN SQUARES. (SEE I&ED) REPLACE THE DATA (1-1) BY THE PREFIX FOR EQUIPMENT OR INSTRUMENTS WHICH ARE PART OF NUCLEAR SAFETY FEATURES SYSTEMS.
  2. GENERAL ELECTRIC IDENTIFICATION NUMBERS ARE SHOWN IN SQUARES.
  3. ALL INSTRUMENT LINES INSIDE CONTAINMENT ARE CL1516, ALL INSTRUMENT LINES OUTSIDE CONTAINMENT ARE CL1582 UNLESS OTHERWISE NOTED.
  4. MONITORS DRYWELL AIR TEMPERATURE.
  5. PIPING 1" NOMINAL PIPE SIZE AND SMALLER WHICH ARE PART OF THE REACTOR COOLANT PRESSURE BOUNDARY SHALL BE SAFETY CLASS 2 UNLESS OTHERWISE NOTED.
  6. THIS INSTRUMENT REQUIRES SEISMIC QUALIFICATION AND MAY BE PURCHASED, INSTALLED, TESTED AND CALIBRATED TO QUALITY ASSURANCE CAT II REQUIREMENTS.
  7. \*\* INDICATES EQUIPMENT SUPPLIED BY G.E.
  8. —○— denotes MINIMUM DISTANCE FOR INSTALLATION.

LR NOTE:  
PLEASE REFER TO DRAWING LR-000 SHEETS 2A THROUGH 2F FOR LR BOUNDARY DRAWING NOTES, SYMBOLS, AND ACRONYMS.

SAFETY RELATED

(REF. SAR FIG. 5.1-2b & ISPT-28B)

**Constellation Energy Group** NINE MILE POINT NUCLEAR STATION UNIT 2 - SCRIBA, N.Y.  
**PIPING & INSTRUMENTATION DIAGRAM**  
 NUCLEAR BOILER AND  
 PROCESS INSTRUMENTATION

SCALE NONE	DRAWING NO LR-28B-0
------------	---------------------