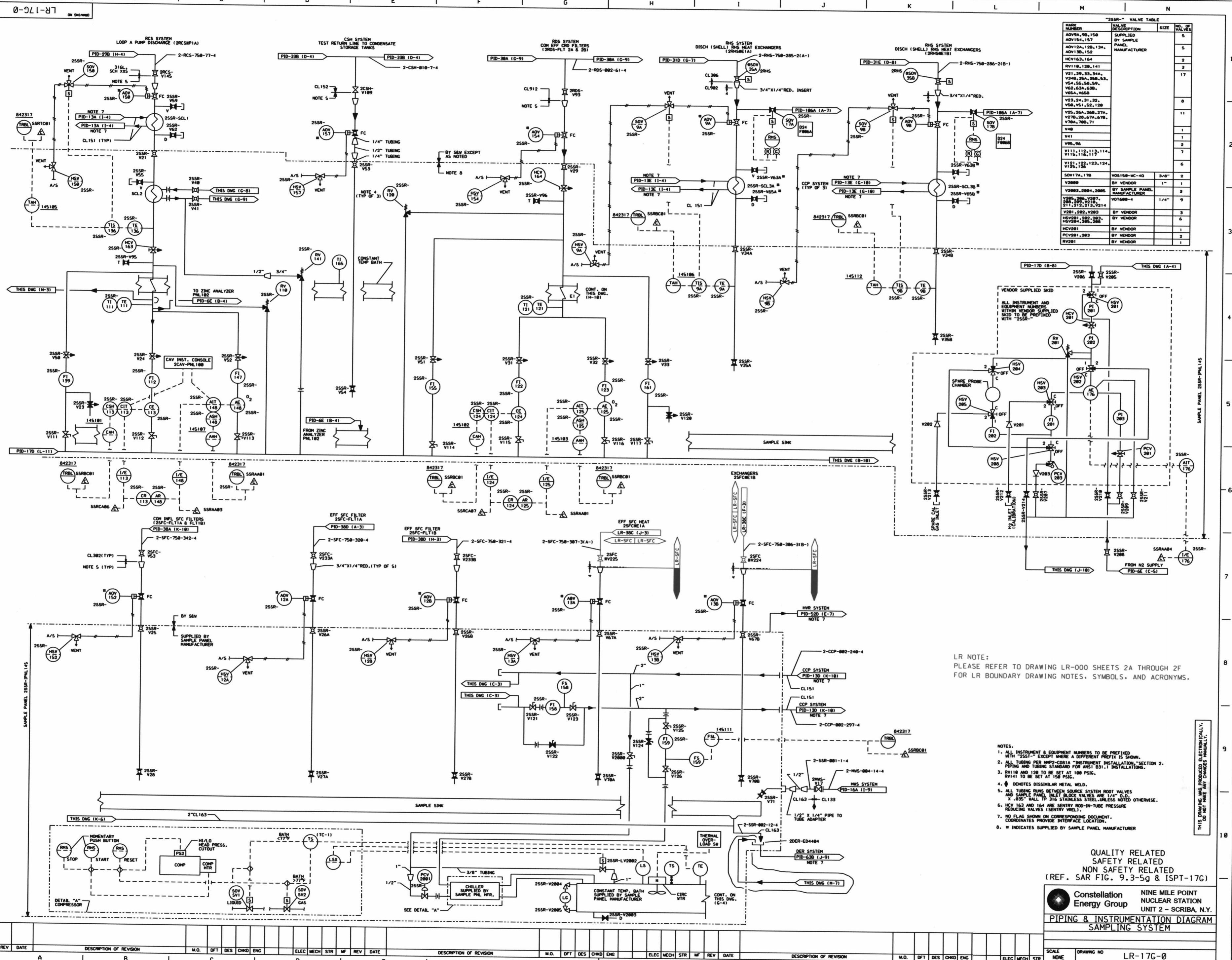


D130



25SR - VALVE TABLE

NAME NUMBER	VALVE DESCRIPTION	SIZE	NO. OF VALVES
ADV14, 151	SUPPLIED BY SAMPLE MANUFACTURER		5
ADV12A, 12B, 13A, ADV13B, 152			5
RV1163, 164			2
RV1129, 141			3
V21, 29, 33, 34A, V24B, 25A, 26B, 53, V54, 55, 58, 59, V62, 63A, 63B, V65A, V65B			17
V23, 24, 31, 32, V36A, V61, 62, 129			8
V25, 26A, 26B, 27A, V27B, 28, 67A, 67B, V70A, 70B, 71			11
V48			1
V41			1
V96, 96			2
V111, 112, 113, 114, V115, 116, 121, 122, 123, 124, V125, 125			7
V121, 122, 123, 124, V125, 125			6
SOV17A, 17B	VDS158-MC-40	3/8"	2
V209, 209A, 209B	BY VENDOR	1"	1
V205, 206A, 206B	BY SAMPLE MANUFACTURER		3
V205, 206, 207B, 211, 212, 213, 214	VOT600-4	1/4"	9
V201, 202, 203	BY VENDOR		3
HSV201, 202, 203	BY VENDOR		6
HCV201	BY VENDOR		1
PCV201, 203	BY VENDOR		2
RV201	BY VENDOR		1

LR NOTE:
PLEASE REFER TO DRAWING LR-000 SHEETS 2A THROUGH 2F
FOR LR BOUNDARY DRAWING NOTES, SYMBOLS, AND ACRONYMS.

- NOTES:
1. ALL INSTRUMENT & EQUIPMENT NUMBERS TO BE PREFIXED WITH "25SI" - EXCEPT WHERE A DIFFERENT PREFIX IS SHOWN.
 2. ALL TUBING PER ANSI/ASME B31.1 "INSTRUMENT INSTALLATION" SECTION 2. PIPING AND TUBING STANDARD FOR ANSI B31.1 INSTALLATIONS.
 3. RV118 AND 120 TO BE SET AT 100 PSIG. RV141 TO BE SET AT 150 PSIG.
 4. ⚡ DENOTES DISSIPATIVE METAL WELD.
 5. ALL TUBING RUNS BETWEEN SOURCE SYSTEM ROOT VALVES AND SAMPLE PANEL INLET BLOCK VALVES ARE 1/4" O.D.
 6. 4-53C VALV TYP 316 STAINLESS STEEL UNLESS NOTED OTHERWISE.
 7. HSV 163 AND 164 ARE SENTRY ROD-IN-TUBE PRESSURE REDUCING VALVES (SENTRY VRL).
 8. NO FLAG SHOWN ON CORRESPONDING DOCUMENT. COORDINATES PROVIDE INTERFACE LOCATION.
 9. # INDICATES SUPPLIED BY SAMPLE MANUFACTURER

QUALITY RELATED
SAFETY RELATED
NON SAFETY RELATED
(REF. SAR FIG. 9.3-5g & ISPT-17G)

Constellation Energy Group
NINE MILE POINT NUCLEAR STATION
UNIT 2 - SCRIBA, N.Y.

PIPING & INSTRUMENTATION DIAGRAM SAMPLING SYSTEM

SCALE NONE DRAWING NO LR-17G-0