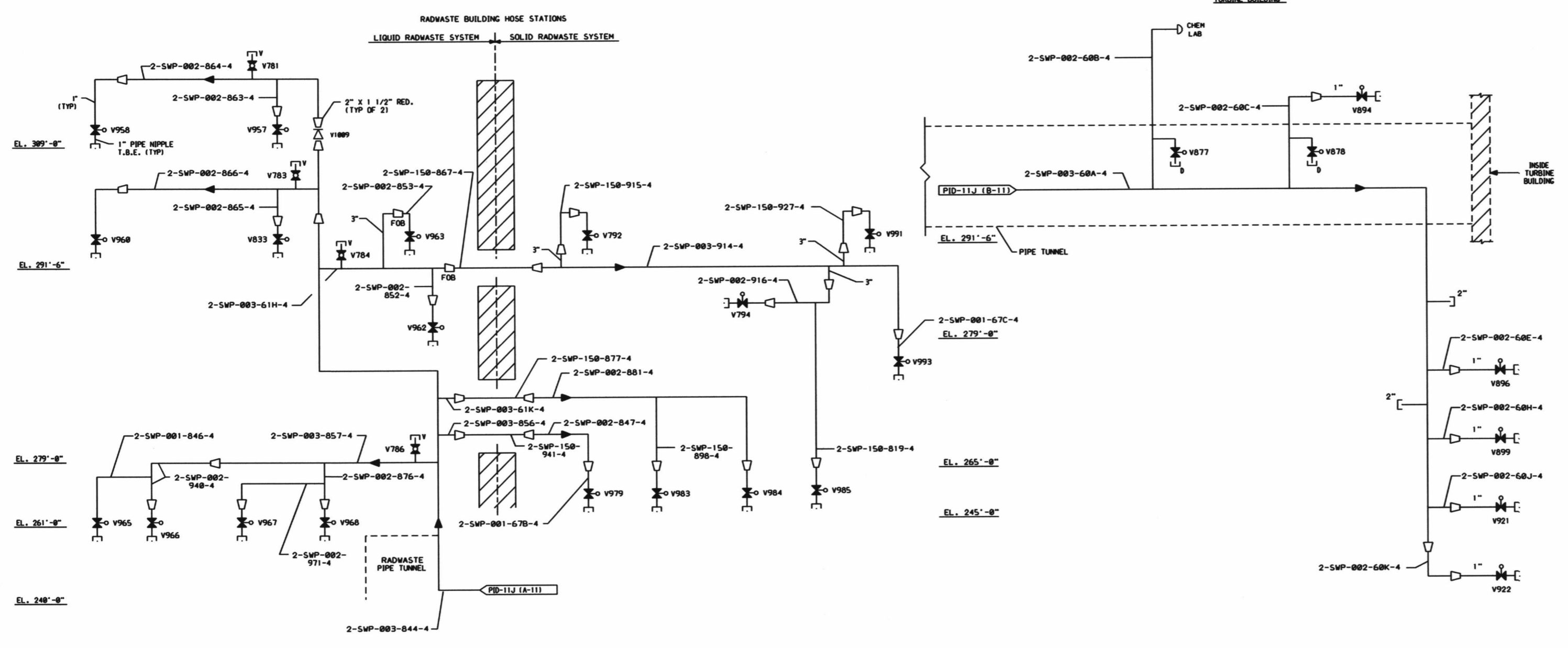


D124

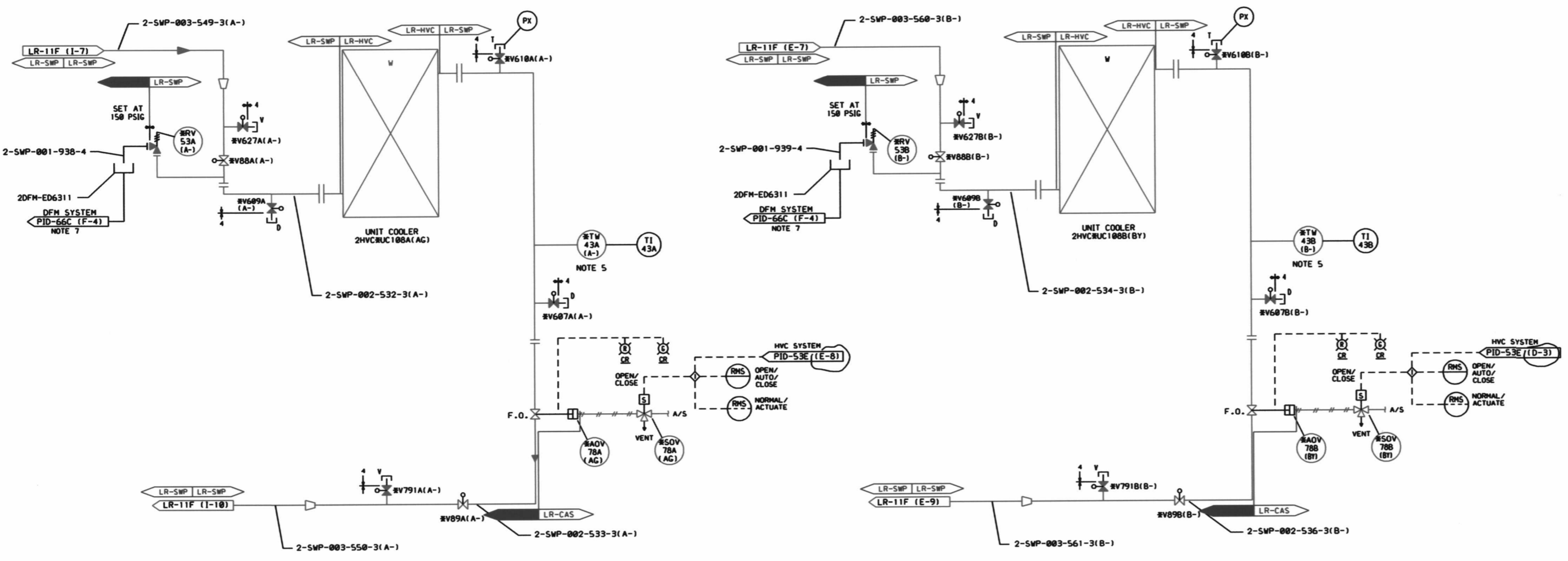
0-011-87

MARK NUMBER	VALVE DESCRIPTION	SIZE	NO. OF VALVES
V894,B	VPS815-C-30	2"	2
V894,B	VBS815-CB-3	2"	2
V867A,B,669A,B	VBS815-CA-3	3/4"	8
V818A,B,677A,B	VBS815-CA-3	3/4"	4
V781,783,784,785	VOS868-D-4	3/4"	4
V791A,B	VBS815-CA-3	3/4"	2
V792,794,833	VBS815-CA-4	1"	23
894			
V896			
V899,921,922			
V951,958			
V968,962,963			
V965,966,967			
V968			
V979,983,984			
V985,991,993	VBS815-CA-4	3/4"	2
V877,878	VCS868-H-4	1 1/2"	1
V1889	VCS868-H-4	1 1/2"	1
V88A,B	VBS815-CA-3	2"	2



- NOTES
1. ALL INSTRUMENT & EQUIPMENT NUMBERS TO BE PREFIXED WITH "SMP" EXCEPT WHERE A DIFFERENT PREFIX IS SHOWN. AN ASTERISK (*) WILL REPLACE THE DASH (-) IN THE PREFIX FOR EQUIPMENT OR INSTRUMENTS WHICH ARE PART OF NUCLEAR SAFETY FEATURES SYSTEM.
 2. ALL PIPING SHALL BE CLASS 151 UNLESS OTHERWISE NOTED.
 3. ALL VENT, DRAIN, PRESSURE, SAMPLE & FLOW CONNECTIONS ARE 3/4" UNLESS OTHERWISE NOTED.
 4. ALL TEMPERATURE CONNECTIONS ARE 1/4"
 5. FOR DETAILS OF PIPING DESIGN FOR THERMOWELL CONNECTIONS SEE DESIGN DIVISION STANDARD NP-1058-1-2.
 6. ALL RV ARE 3/4" x 1" UNLESS OTHERWISE NOTED.
 7. NO FLAG SHOWN ON CORRESPONDING DOCUMENT. COORDINATES PROVIDE INTERFACE LOCATION.

LR NOTE:
PLEASE REFER TO DRAWING LR-000 SHEETS 2A THROUGH 2F FOR LR BOUNDARY DRAWING NOTES, SYMBOLS, AND ACRONYMS.



SAFETY RELATED
QUALITY RELATED
NON-SAFETY RELATED
(REF. SAR FIG. 9.2-1q & ISPT-110)

Constellation Energy Group
NINE MILE POINT NUCLEAR STATION
UNIT 2 - SCRIBA, N.Y.

PIPING & INSTRUMENTATION DIAGRAM
SERVICE WATER SYSTEM

SCALE: NONE DRAWING NO: LR-11Q-0

REV	DATE	DESCRIPTION OF REVISION	M.O.	DFT	DES	CHWD	ENG	ELEC	MECH	STR	MP	REV	DATE	DESCRIPTION OF REVISION	M.O.	DFT	DES	CHWD	ENG	ELEC	MECH	STR