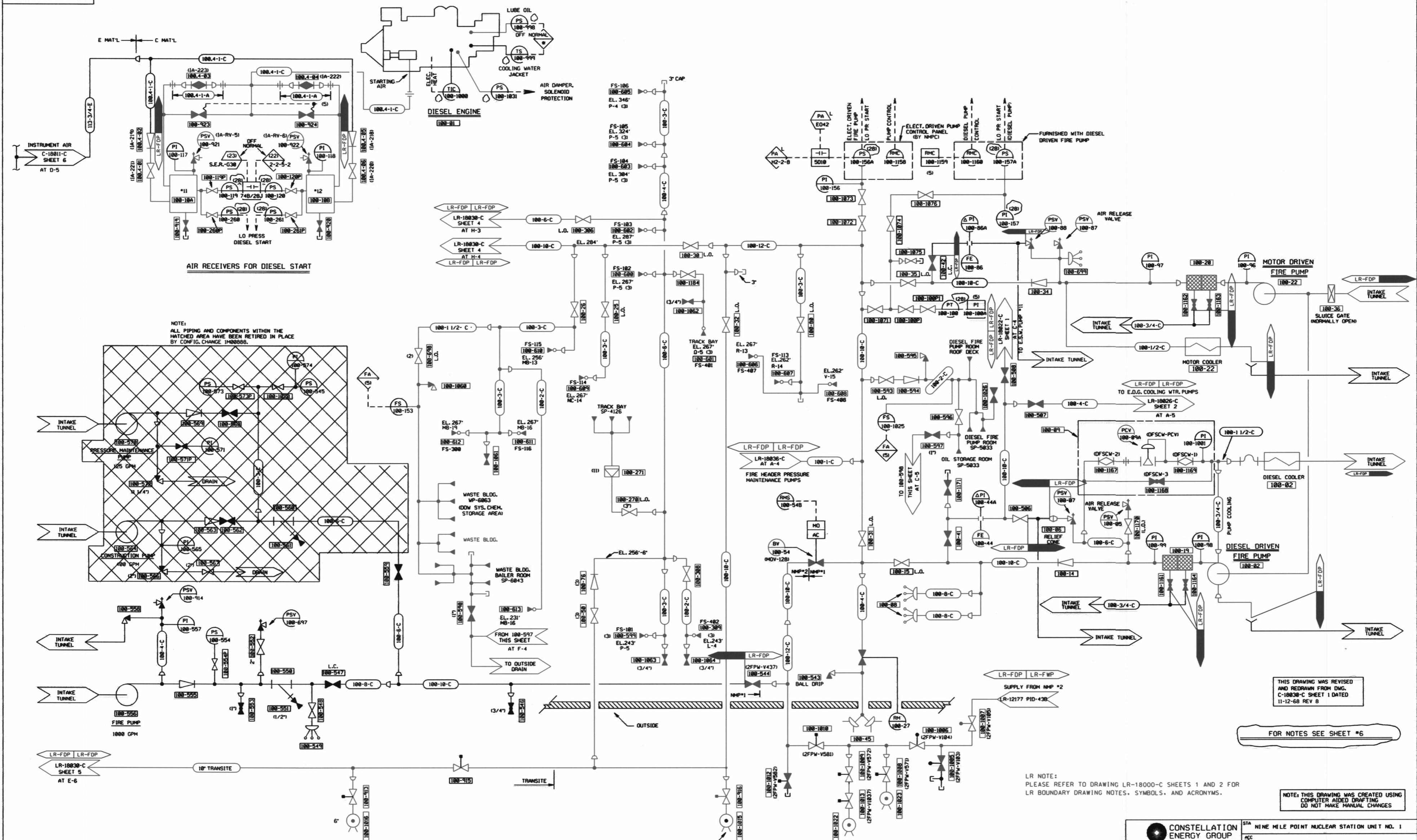


0-0030-R1  
1394  
1395  
1396



NOTE:  
ALL PIPING AND COMPONENTS WITHIN THE  
HATCHED AREA HAVE BEEN RETIRED IN PLACE  
BY CONFIG. CHANGE 1400855.

THIS DRAWING WAS REVISED  
AND REDRAWN FROM ENG.  
C-10030-C SHEET 1 DATED  
11-12-68 REV 8

FOR NOTES SEE SHEET #6

LR NOTE:  
PLEASE REFER TO DRAWING LR-18000-C SHEETS 1 AND 2 FOR  
LR BOUNDARY DRAWING NOTES, SYMBOLS, AND ACRONYMS.

NOTE: THIS DRAWING WAS CREATED USING  
COMPUTER AIDED DRAFTING  
DO NOT MAKE MANUAL CHANGES

PROVISION FOR EMERGENCY  
CONNECTION OF FIRE PUMPER  
FOR LAKE WATER SUPPLY  
TO FIRE MAIN

CONSTELLATION ENERGY GROUP  
STA NINE MILE POINT NUCLEAR STATION UNIT NO. 1

REV	DATE	BY	REMARKS	CK	APP	DF	DWG NO	INDEX	SH	REV
31	7/26/01	PAJ	ADMINISTRATIVE CHANGE PER DER 1-1999-4150				LR-18030-0	3-N2-S13.1	3	0
30	3/13/01	FCM	EDITORIAL CHANGE CLOSED VALVE 100-547 PER DOC 1400851							
29	1/3/01	FCM	INC. DOC 1400888							
28	10/10/00	PAJ	INC. DOC 1400851							

0058