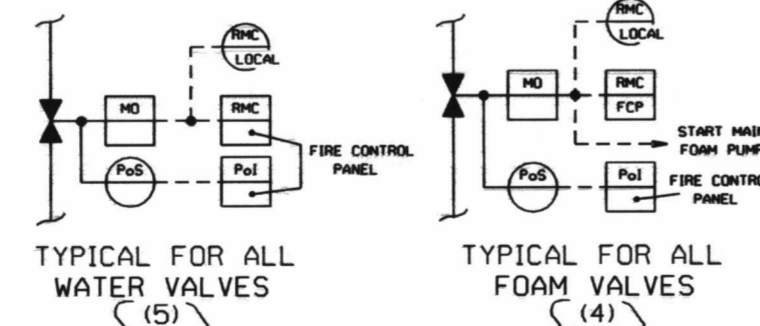
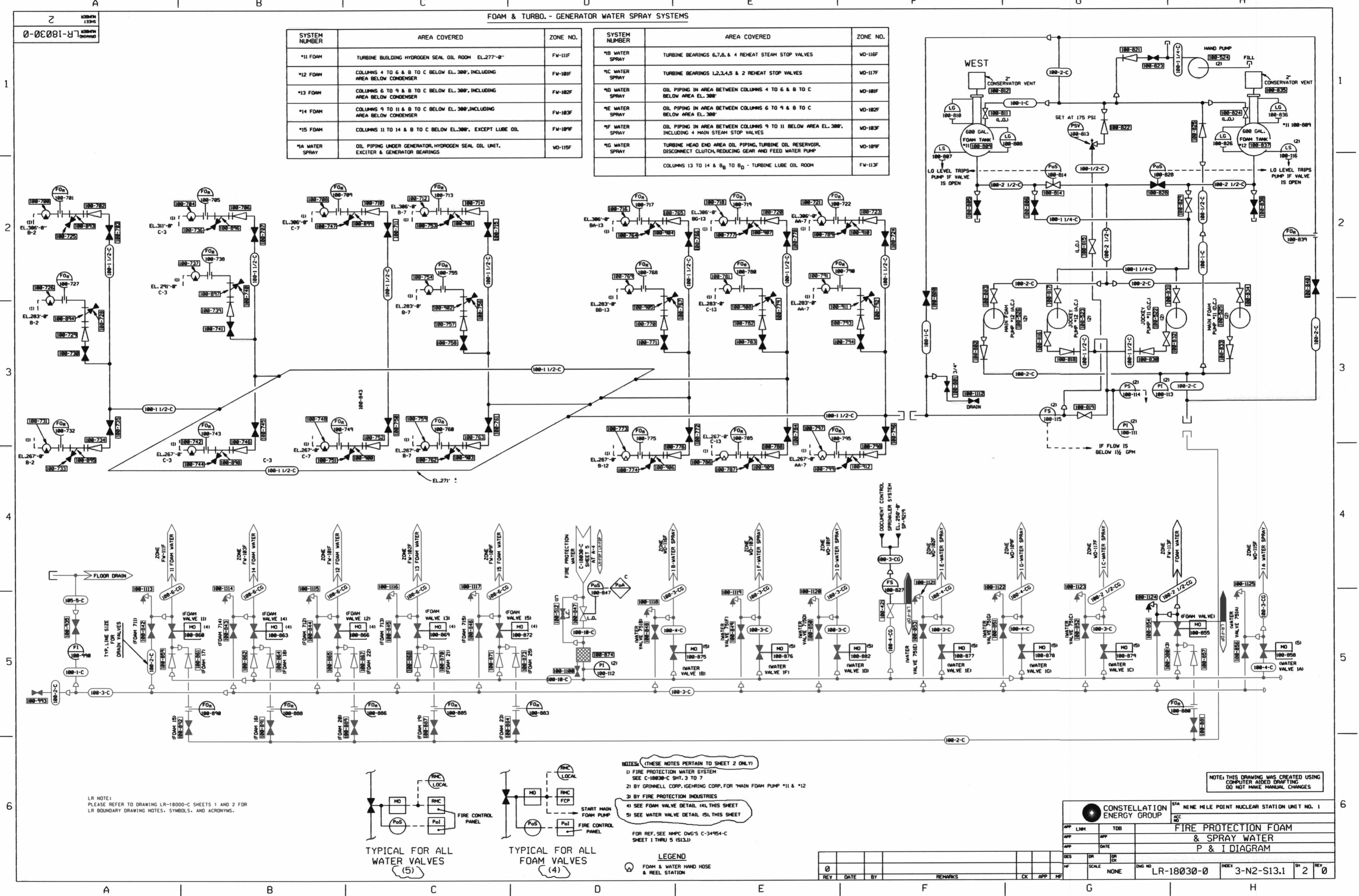


FOAM & TURBO. - GENERATOR WATER SPRAY SYSTEMS

SYSTEM NUMBER	AREA COVERED	ZONE NO.
*11 FOAM	TURBINE BUILDING HYDROGEN SEAL OIL ROOM EL.277'-0"	FW-11F
*12 FOAM	COLUMNS 4 TO 6 & B TO C BELOW EL.300', INCLUDING AREA BELOW CONDENSER	FW-101F
*13 FOAM	COLUMNS 6 TO 9 & B TO C BELOW EL.300', INCLUDING AREA BELOW CONDENSER	FW-102F
*14 FOAM	COLUMNS 9 TO 11 & B TO C BELOW EL.300', INCLUDING AREA BELOW CONDENSER	FW-103F
*15 FOAM	COLUMNS 11 TO 14 & B TO C BELOW EL.300', EXCEPT LUBE OIL	FW-104F
*1A WATER SPRAY	OIL PIPING UNDER GENERATOR, HYDROGEN SEAL OIL UNIT, EXCITER & GENERATOR BEARINGS	WD-115F

SYSTEM NUMBER	AREA COVERED	ZONE NO.
*1B WATER SPRAY	TURBINE BEARINGS 6,7,8, & 4 REHEAT STEAM STOP VALVES	WD-116F
*1C WATER SPRAY	TURBINE BEARINGS 1,2,3,4,5 & 2 REHEAT STOP VALVES	WD-117F
*1D WATER SPRAY	OIL PIPING IN AREA BETWEEN COLUMNS 4 TO 6 & B TO C BELOW AREA EL.300'	WD-101F
*1E WATER SPRAY	OIL PIPING IN AREA BETWEEN COLUMNS 6 TO 9 & B TO C BELOW AREA EL.300'	WD-102F
*1F WATER SPRAY	OIL PIPING IN AREA BETWEEN COLUMNS 9 TO 11 BELOW AREA EL.300', INCLUDING 4 MAIN STEAM STOP VALVES	WD-103F
*1G WATER SPRAY	TURBINE HEAD END AREA OIL PIPING, TURBINE OIL RESERVOIR, DISCONNECT CLUTCH, REDUCING GEAR AND FEED WATER PUMP	WD-104F
	COLUMNS 13 TO 14 & B <sub>2</sub> TO B <sub>1</sub> - TURBINE LUBE OIL ROOM	FW-113F



- NOTES: (THESE NOTES PERTAIN TO SHEET 2 ONLY)
- 1) FIRE PROTECTION WATER SYSTEM SEE C-10038-C SHT. 3 TO 7
  - 2) BY GRINNELL CORP./GEHRING CORP. FOR MAIN FOAM PUMP \*11 & \*12
  - 3) BY FIRE PROTECTION INDUSTRIES
  - 4) SEE FOAM VALVE DETAIL (4), THIS SHEET
  - 5) SEE WATER VALVE DETAIL (5), THIS SHEET
- FOR REF. SEE NMPCC DWD'S C-34954-C SHEET 1 THRU 5 (S13.1)

LEGEND  
 FOAM & WATER HAND HOSE & REEL STATION

NOTE: THIS DRAWING WAS CREATED USING COMPUTER AIDED DRAWING DO NOT MAKE MANUAL CHANGES

CONSTITUTION ENERGY GROUP		NINE MILE POINT NUCLEAR STATION UNIT NO. 1	
APP LHM	TDB	FIRE PROTECTION FOAM & SPRAY WATER P & I DIAGRAM	
APP	DATE		
DES	DR		
SCALE	DWG NO	INDEX	REV
NONE	LR-18030-0	3-N2-S13.1	2 0

D057