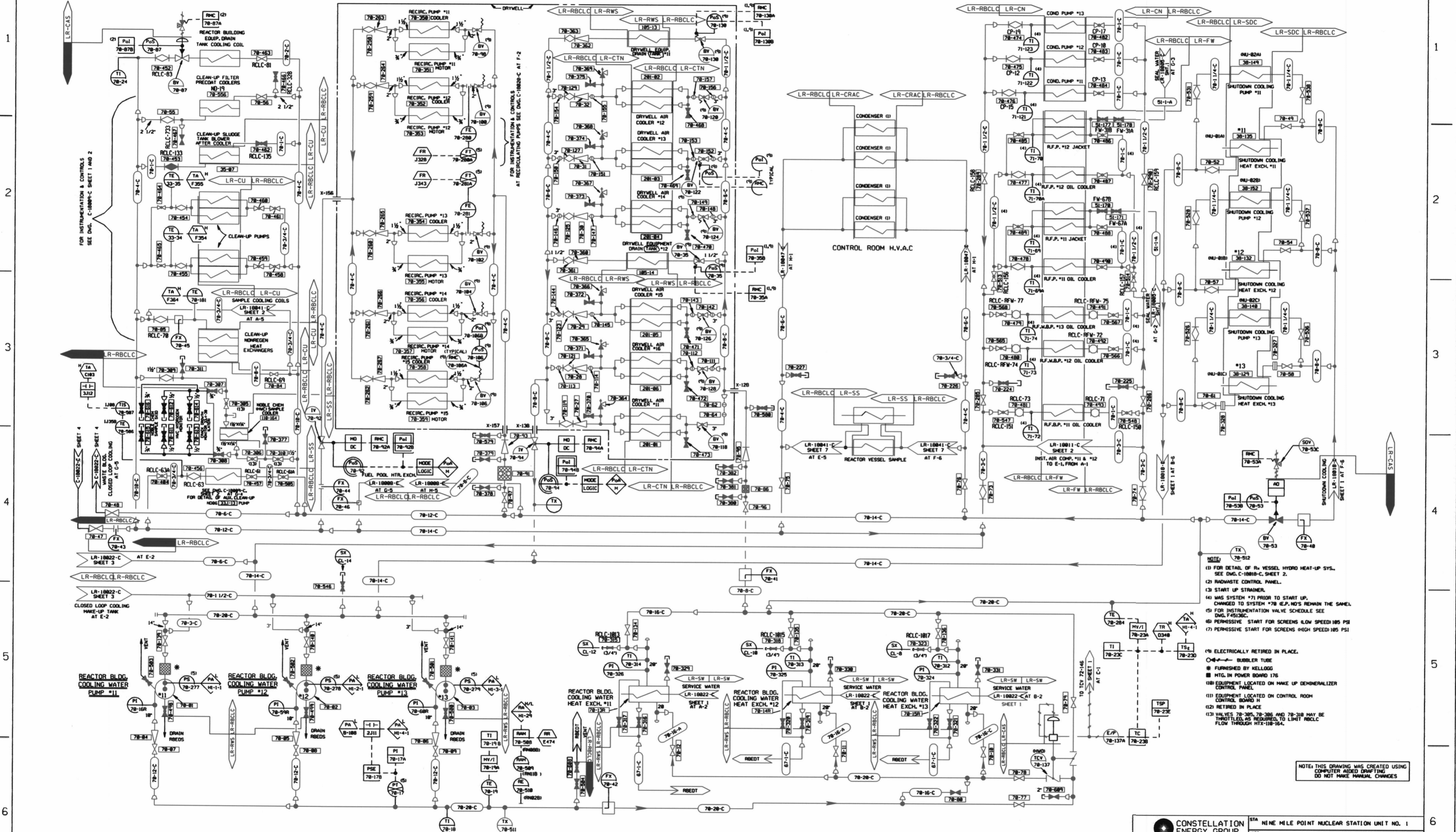


LR-18022-C



- NOTE:
- (1) FOR DETAIL OF R<sub>v</sub> VESSEL HYDRO HEAT-UP SYS. SEE DWG. C-18018-C, SHEET 2.
  - (2) RADWASTE CONTROL PANEL.
  - (3) START UP STRAINER.
  - (4) WAS SYSTEM #71 PRIOR TO START UP, CHANGED TO SYSTEM #78 R.P. #15 REMAIN THE SAME.
  - (5) FOR INSTRUMENTATION VALVE SCHEDULE SEE DWG. F45136C.
  - (6) PERMISSIVE START FOR SCREENS LOW SPEED 185 PSI
  - (7) PERMISSIVE START FOR SCREENS HIGH SPEED 185 PSI
  - (8) ELECTRICALLY RETIRED IN PLACE.
  - (9) BUBBLER TUBE
  - (10) FURNISHED BY KELLOGG
  - (11) MTLG IN POWER BOARD 176
  - (12) EQUIPMENT LOCATED ON MAKE UP DEMINERALIZER CONTROL PANEL
  - (13) EQUIPMENT LOCATED ON CONTROL ROOM CONTROL BOARD H
  - (14) RETIRED IN PLACE
  - (15) VALVES 78-306, 78-308 AND 78-310 MAY BE THROTTLED, AS REQUIRED, TO LIMIT RBCLC FLOW THROUGH HTX-118-164.

NOTE: THIS DRAWING WAS CREATED USING COMPUTER AIDED DRAFTING. DO NOT MAKE MANUAL CHANGES.

LR NOTE:  
PLEASE REFER TO DRAWING LR-18000-C SHEETS 1 AND 2 FOR LR BOUNDARY DRAWING NOTES, SYMBOLS, AND ACRONYMS.

CONSTELLATION ENERGY GROUP		STA NINE MILE POINT NUCLEAR STATION UNIT NO. 1	
APP	APP	REACTOR BLDG	
APP	DATE	CLOSED LOOP COOLING SYSTEM	
DES	DR	P & I DIAGRAM	
REV	SCALE	DWG NO	INDEX
	NONE	LR-18022-C	
		SHEET	REV
		2	0

1048