

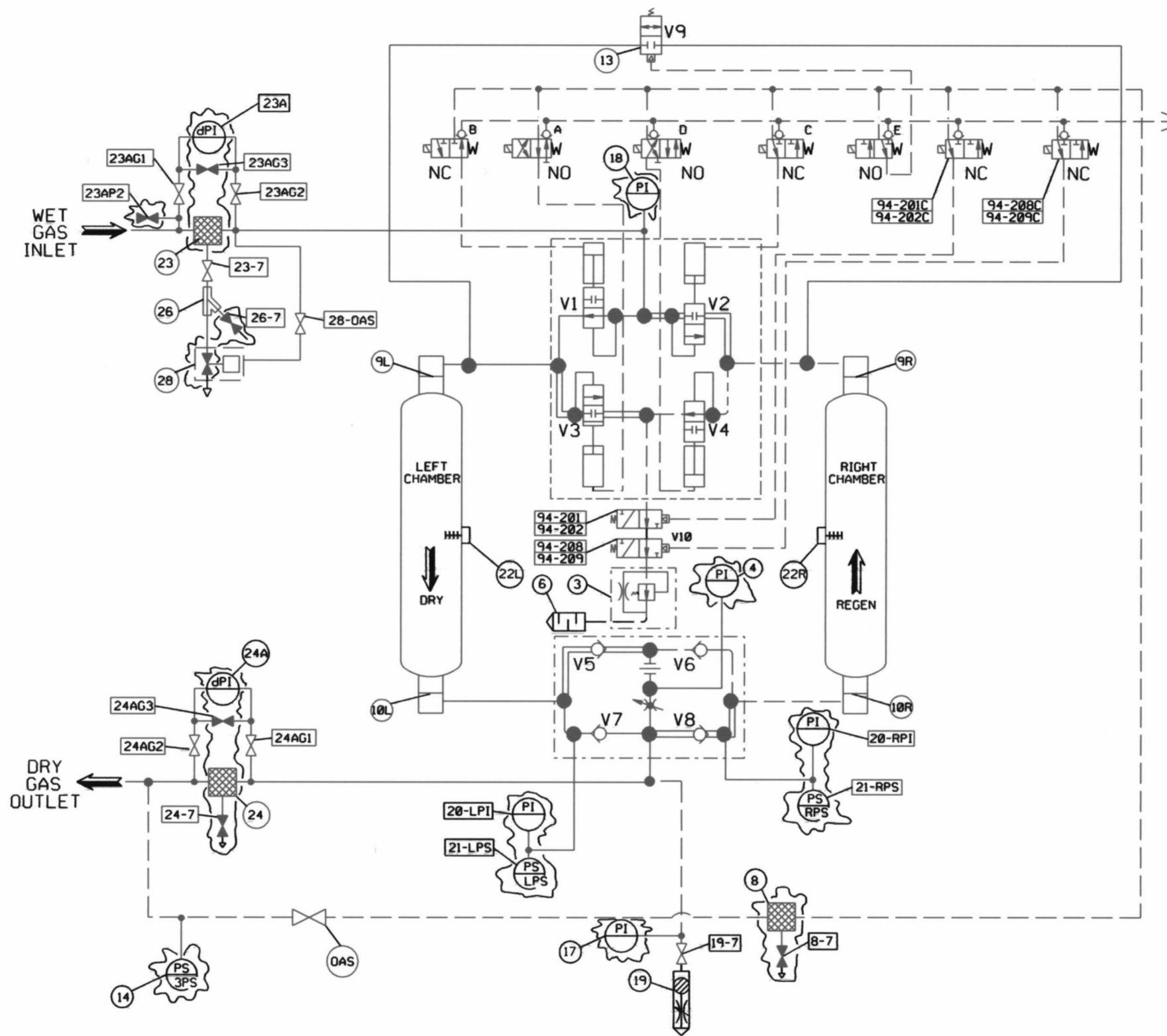
0-11081-R7

NOTE:

ALL ITEM NUMBERS SHOWN ARE TO BE PREFIXED WITH THE EPN NUMBER OF THE INSTRUMENT AIR DRYER ON WHICH THE COMPONENT IS LOCATED. (I.E. 94-168, 94-169) EXCEPT 94-201, 201C, 208, 208C (DRYER 94-169) AND 94-202, 202C, 209, 209C (DRYER 94-168).

LEGEND

1.	NOT USED
2.	NOT USED
3.	PURGE EXHAUST ASSEMBLY
4.	PURGE FLOW PRESSURE GAUGE
5.	NOT USED
6.	PURGE EXHAUST MUFFLER
7.	NOT USED
8.	OPERATING AIR FILTER
8-7.	OPERATING AIR FILTER DRAIN VALVE
9L.	DESICCANT RETAINING SCREEN-LEFT
9R.	DESICCANT RETAINING SCREEN-RIGHT
10L.	DESICCANT SUPPORT SCREEN-LEFT
10R.	DESICCANT SUPPORT SCREEN-RIGHT
11.	NOT USED
12.	NOT USED
13.	REPRESSURIZATION VALVE
14.	PURGE SHUT-OFF VALVE-PS
15.	NOT USED
16.	NOT USED
17.	OUTLET PRESSURE GAUGE
18.	INLET PRESSURE GAUGE
19.	AUADEX MOISTURE INDICATOR
19-7.	AUADEX MOISTURE INDICATOR-BV
20-LPI.	CHAMBER PRESSURE GAUGE-LEFT
20-RPI.	CHAMBER PRESSURE GAUGE-RIGHT
21-LPS.	CHAMBER PRESSURE SWITCH-LEFT
21-RPS.	CHAMBER PRESSURE SWITCH-RIGHT
22L.	AMLOC PROBE-LEFT
22R.	AMLOC PROBE-RIGHT
23.	COALESCING PREFILTER
23-7.	PREFILTER DRAIN VALVE
23A.	PREFILTER DPI
23AG1.	PREFILTER DPI HP ROOT VALVE
23AG2.	PREFILTER DPI LP ROOT VALVE
23AG3.	PREFILTER DPI EQUALIZING VALVE
23AP2.	PREFILTER DPI DRAIN VALVE
24.	AFTERFILTER
24-7.	AFTERFILTER DRAIN VALVE
24A.	AFTERFILTER DPI
24AG1.	AFTERFILTER DPI HP ROOT VALVE
24AG2.	AFTERFILTER DPI LP ROOT VALVE
24AG3.	AFTERFILTER DPI EQUALIZING VALVE
25.	NOT USED
26.	PREFILTER DRAIN STRAINER
26-7.	DRAIN VALVE PREFILTER DRAIN STRAINER
27.	NOT USED
28.	PREFILTER AUTO DRAIN VALVE
28-OAS.	AUTO DRAIN OAS BLOCK VALVE
OAS.	OPERATING AIR SUPPLY BLOCK VALVE
A.	SOLENOID VALVE - LEFT CHAMBER EXHAUST
B.	SOLENOID VALVE - LEFT CHAMBER INLET
C.	SOLENOID VALVE - RIGHT CHAMBER EXHAUST
D.	SOLENOID VALVE - RIGHT CHAMBER INLET
E.	SOLENOID VALVE - FOR REPRESSURIZATION VALVE
V1.	INLET SWITCHING VALVE - LEFT CHAMBER
V2.	INLET SWITCHING VALVE - RIGHT CHAMBER
V3.	EXHAUST SWITCHING VALVE - LEFT CHAMBER
V4.	EXHAUST SWITCHING VALVE - RIGHT CHAMBER
V5.	PURGE CHECK VALVE - LEFT CHAMBER
V6.	PURGE CHECK VALVE - RIGHT CHAMBER
V7.	OUTLET CHECK VALVE - LEFT CHAMBER
V8.	OUTLET CHECK VALVE - RIGHT CHAMBER



REFERENCE DRAWINGS  
C-18011-C SH.2, (S18.8)

LR NOTE:  
PLEASE REFER TO DRAWING LR-18000-C SHEETS 1 AND 2 FOR  
LR BOUNDARY DRAWING NOTES, SYMBOLS, AND ACRONYMS.

NOTE: THIS DRAWING WAS CREATED USING  
COMPUTER AIDED DRAFTING  
DO NOT MAKE MANUAL CHANGES

- AS SHOWN FLOW DIRECTION IS:  
—— LEFT CHAMBER DRYING  
- - - RIGHT CHAMBER REGENERATING  
- - - PILOT GAS LINE
- SOLENOID VALVES 'C', 'D' AND 94-201C, 202C, 208C, 209C ARE SHOWN ENERGIZED.  
'A', 'B', AND 'E' ARE SHOWN DE-ENERGIZED.
- SYMBOLS ARE ANSI Y32.10 "GRAPHIC SYMBOLS FOR FLUID POWER DIAGRAMS AND NMP1 PIPING, INSTRUMENT AND EQUIPMENT SYMBOLS DRAWING C-18000-C"

CONstellation ENERGY GROUP		NINE MILE POINT NUCLEAR STATION UNIT NO. 1	
APP	APP	INSTRUMENT AIR SYSTEM	
APP	DATE	P&I DIAGRAM	
DES	SCALE	INST. AIR DRYERS 94-168, 94-169	
HF	SCALE	DWG NO	INDEX
	NONE	LR-18011-0	3-N2.1-S18.8
		SH	REV
		4	0

REV	DATE	BY	REMARKS	CK	APP	MF
0						

D023