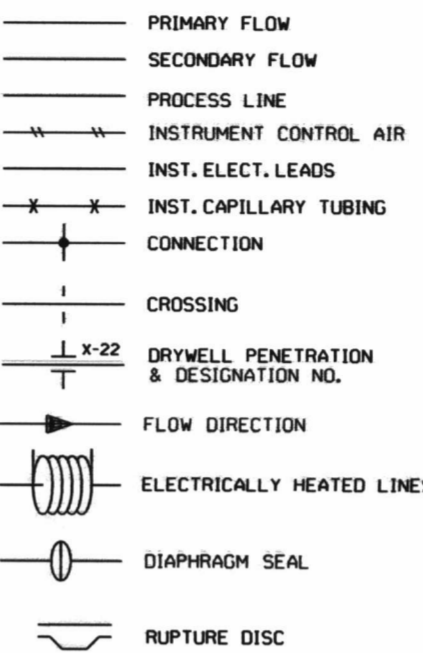


3-00081-87

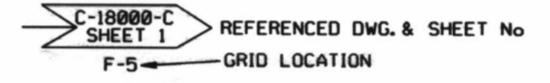
REFERENCE MEL 1 MASTER EQUIPMENT SCOPE (ME-1) FOR COMPONENT ID PREFIXES.

MEASURED VARIABLE	INSTRUMENT FUNCTION	CONTROLLING										MEASURING										SWITCH			ALARMS			POWER OPERATED VALVES							
		RECORDING	INDICATING	NON INDICATING	CONTROL VALVES	SAFETY-RELIEF VALVES	ORIFICE RESTRICTING	HIGH PRESSURE CONNECTION	LOW PRESSURE CONNECTION	RECORDING	INDICATING	OBSERVATION CLASS	PRIMARY ELEMENT	TEST POINT OR WELL	SET POINT	TRANSMITTER	INTEGRATOR	AMPLIFIER	SAMPLER	INDICATING	NON INDICATING	ELECTRONIC	OPEN	CLOSED	ALARM	ALARM HIGH	ALARM LOW	POWER SUPPLY	BLOCKING	ISOLATION	SOLENOID	MOTOR	REMOTE MANUAL CONTROL		
		-RC	-IC	-C	-CV	-RV	-OR	K1	K2	-R	-I	-G	-E	-X	-SP	-T	-D	-AM	-SM	-IS	-S	-SE	-A0	-AC	-A	-AH	-AL	-PW	BV	IV	SOV	MO	RMC		
CONDUCTIVITY	C	CRC	CIC							CR	CI		CE	CX						CIS	CS			CA	CAH	CAL									
DENSITY	D		DC										DE		DSP	DT																			
DIFF. PRESS.	dP	dPRC	dPIC	dPC				K1	K2	dPR	dPI				dPT					dPIS	dPS			dPA	dPAH	dPAL									
FLOW	F	FRC	FIC	FC	FCV		FO _R	K1	K2	FR	FI	FG	FE	FX		FT	FD			FIS	FS	FS _E		FA	FAH	FAL									
FREON	F ₁₂										F ₁₂ R																								
HUMIDITY	H	HRC	HIC								HI		HE	HX																					
HYDROGEN	H ₂	H ₂ RC											H ₂ E																						
LEVEL	L	LRC	LIC	LC	LCV					LR	LI	LG	LE			LT				LIS	LS	LS _E		LA	LAH	LAL									
NEUTRON FLUX	N		NIC							NR	NI	NE	NX		NT	ND	NA _M			NIS	NS			NA	NAH	NAL	NP _W								
OXYGEN	O ₂									O ₂ R	O ₂ I		O ₂ E																						
PH	pH	pHRC	pHIC	pHC						pHR	pHI		pHE	pHX			pHA _M	pHS _M						pHA	pHAH	pHAL									
POSITION	Po									PoR	PoI				PoT					PoIS	Pos			PoAo	PoAc										
PRESSURE	P	PRC	PIC	PC	PCV	PRV	PSV	PO _R		PR	PI		PX		PT					PIS	PS	PS _E		PA	PAH	PAL									
RADIATION	R				RCV					RR	RI		RE	RX			RA _M	RS _M						RA	RAH	RAL	RP _W								
SAMPLE	S													SX			SS _M																		
SPEC. GRAVITY	Sg	SgRC								SgR	SgI																								
SPEED	Sp	SpRC	SpIC	SpC						SpR	SpI		SpE																						
TEMPERATURE	T	TRC	TIC	TC	TCV					TR	TI		TE	TX	TSP	TT				TIS	TS			TA	TAH	TAL									
VACUUM	V ^c	V ^c RC	V ^c IC	V ^c C	V ^c SV			V ^c R	V ^c I						V ^c T					V ^c S				V ^c A	V ^c AH	V ^c AL									
VIBRATION	Vb									VbR					VbT		VbA _M																		
VISCOSITY	V																																		

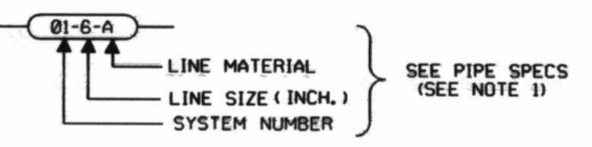
LINE SYMBOLS



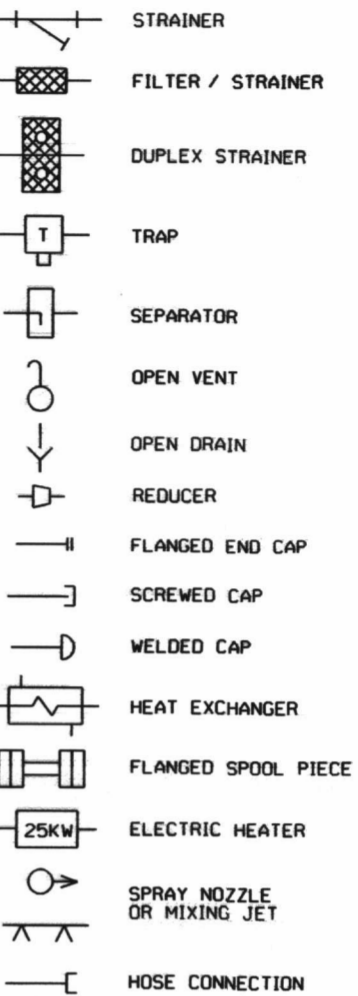
LINE CONTINUATION



LINE IDENTIFICATION

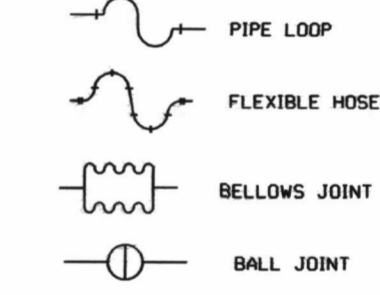


PIPING SYMBOLS

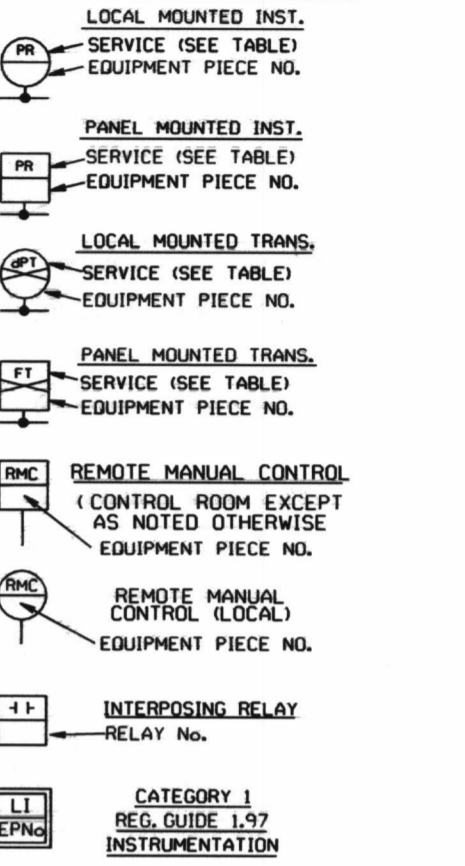


EXPANSION JOINTS

NOT SHOWN ON P&I WHEN USED ONLY FOR NORMAL FLEXIBILITY



INSTRUMENT SYMBOLS

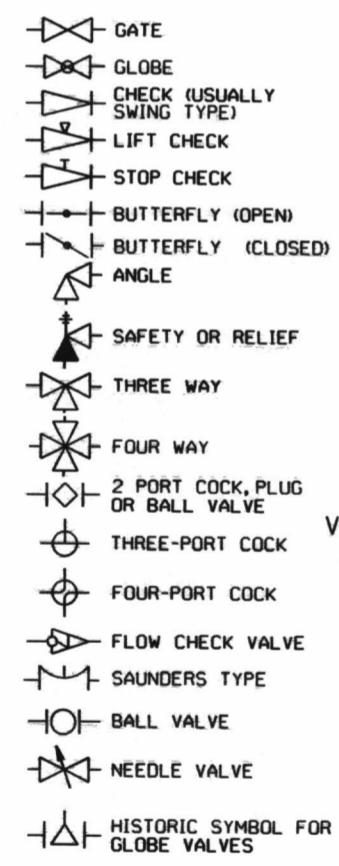


ANNUNCIATOR ALARM - AUDIBLE AND/OR VISIBLE SERVICE (SEE TABLE) 7K-2-1 ANNUNCIATOR DROP NO. M-ISOLATION VALVE MIMIC

DATA HANDLING SYSTEM SERVICE (SEE TABLE) POINT IDENTIFICATION NO.

CONVERTER - ELECTRIC PNEUMATIC EQUIPMENT PIECE NO. CONTROL COMPONENTS - SYS.-TOTAL CONTROL SYSTEM - SQUARE ROOT EXTRACTOR - SUMMER - MULTIPLIER - DIVIDER - FUNCTION GENERATOR - PROPORTIONAL AMPLIFIER - MILLIVOLT/CURRENT TRANSMITTER - INTEGRATOR - DIFFERENCE - AVG AVERAGE

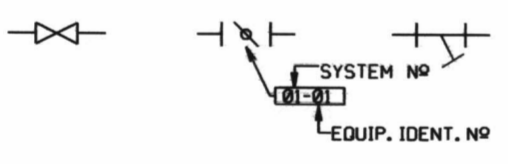
VALVE SYMBOLS



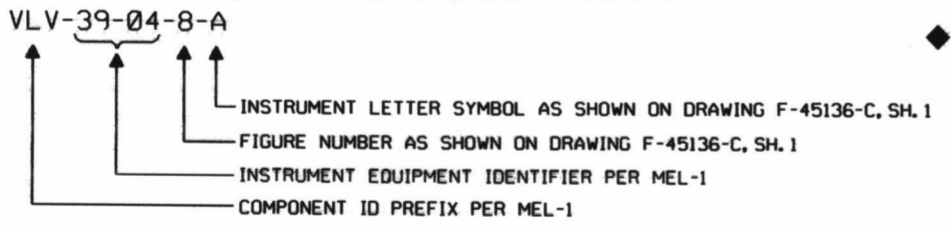
VENTILATION DAMPERS

DAMPERS ARE SHOWN IN NORMAL POSITION FOR USUAL PLANT OPERATIONS (SEE NOTE-3) SHUT-OFF, THROTTLING, BACK DRAFT, MULTI-DAMPERS

EQUIP. PIECE NO FOR VALVES / DAMPERS & PIPE LINE EQUIP.



INSTRUMENT VALVE IDENTIFICATION

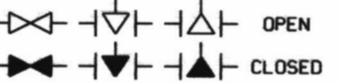


SPECIAL NOTES

L.O.=LOCKED OPEN, L.C.=LOCKED CLOSED, R.M.=REMOTE MANUAL (HANDWHEEL EXTENSION), K.O.=KEY OPERATED, R.P.S.=REACTOR PROTECTION SYSTEM, H.W.O.=HAND WHEEL OVERRIDE, F.C.=FAILS CLOSED, F.O.=FAILS OPEN

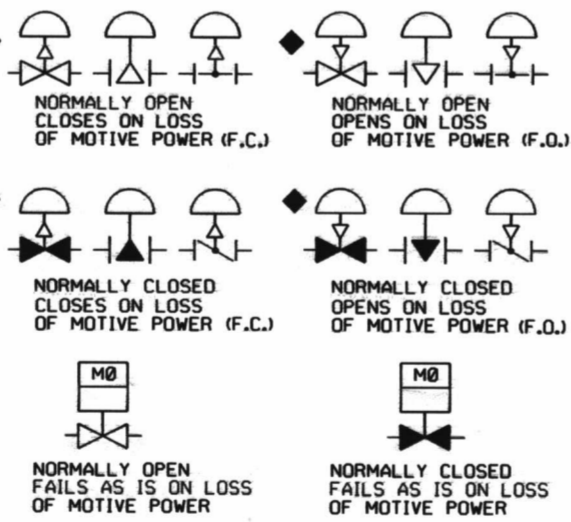
VALVE POSITIONS

VALVES ARE SHOWN IN NORMAL POSITION FOR USUAL PLANT OPERATIONS



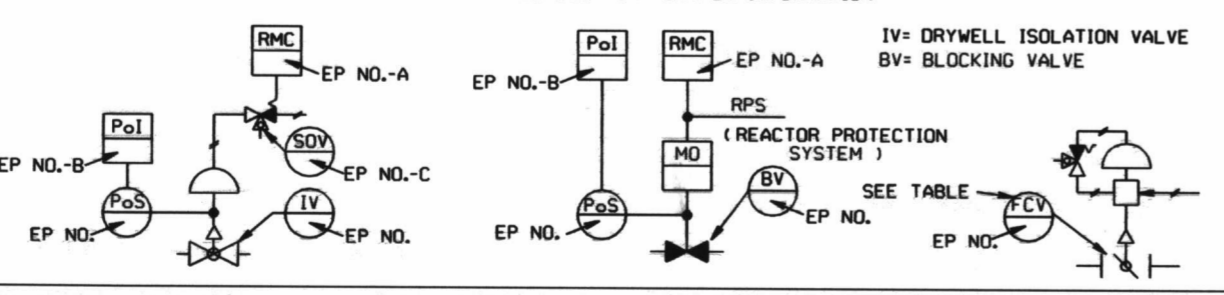
CONTROL VALVE / DAMPER OPERATION

- USE APPLICABLE OPERATOR WITH VALVE / DAMPER SYMBOL
- SHOW VALVE IN NORMAL POSITION FOR USUAL PLANT CONDITION
- DETERMINE VALVE POSITION (MODE OF FAILURE) LOSS OF MOTIVE POWER

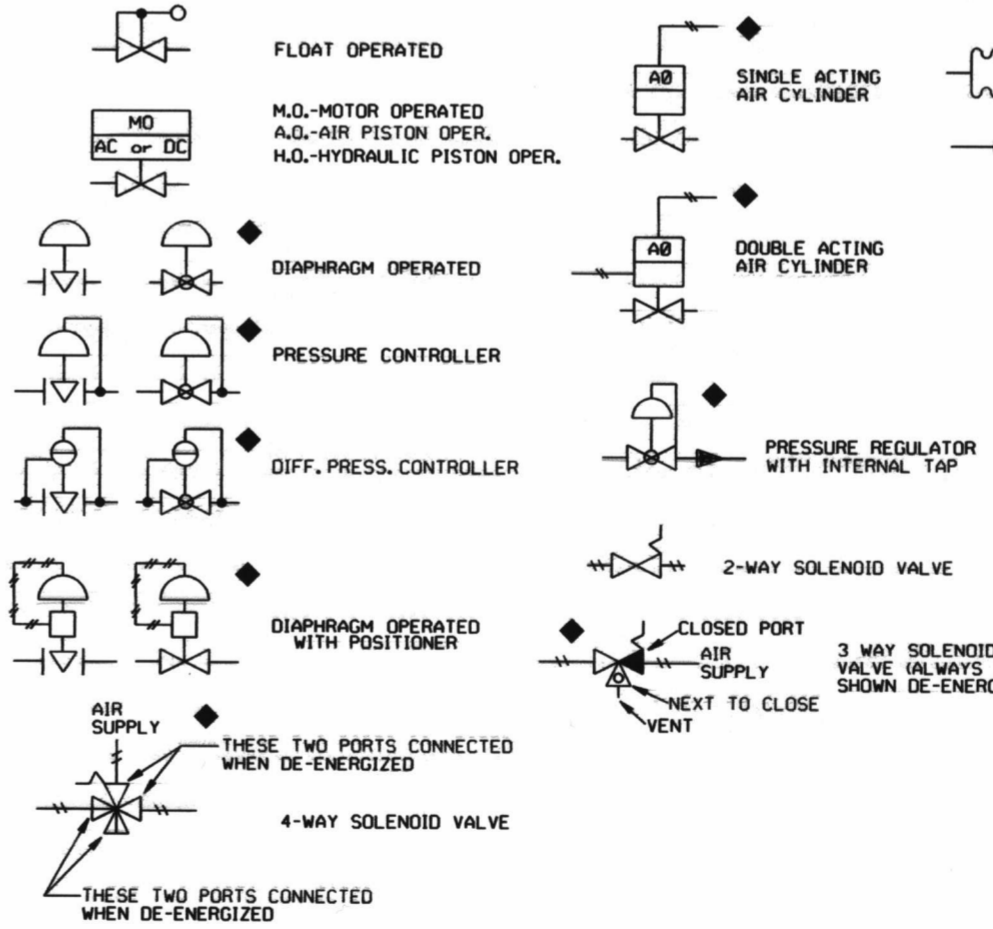


CONTROL OR POWER OPERATED VALVES / DAMPERS COMPOSITE DESIGNATION

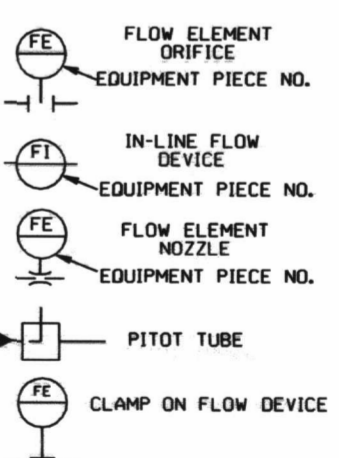
SEE PLANT EQUIPMENT IDENTIFICATION SYSTEM MDG-005 FOR FURTHER INFORMATION



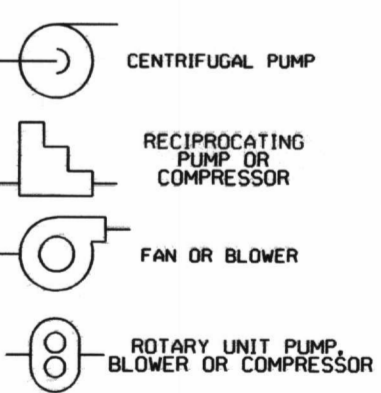
CONTROL VALVES / DAMPER OPERATORS



FLOW DEVICES



PUMPS & FANS



- NOTES:
- FOR SYSTEM PIPING SPECIFICATION SEE THE FOLLOWING, PIPE SPECIFICATION RECORD SET NINE MILE POINT UNIT #1, DOCUMENT NUMBERS PSRS-GN THRU PSRS 606.
 - FOR INSTRUMENTATION AIR PROCESS PIPING AND TUBING SEE DRAWING A-2210-C (S18.8).
 - FOR DETAILED LIST OF FIRE DAMPERS, REFER TO THE FIRE DAMPER SCHEDULE, DRAWING C-42355-C (S10) SHEETS 1, 2 & 3.
- ◆ DENOTES SYMBOLS ADDED AFTER INITIAL CONSTRUCTION AND TO BE USED IN FUTURE ADDITIONS AND MODIFICATIONS.

CONSTELLATION ENERGY GROUP		NINE MILE POINT NUCLEAR STATION UNIT NO. 1	
APP	APP	LICENSE RENEWAL BOUNDARY DRAWING SYMBOLS, NOTES, AND ACRONYMS	
APP JH	DATE 2-25-65	SCALE	DWG NO LR-18000-C
REV	DATE	BY	REMARKS
0			

002