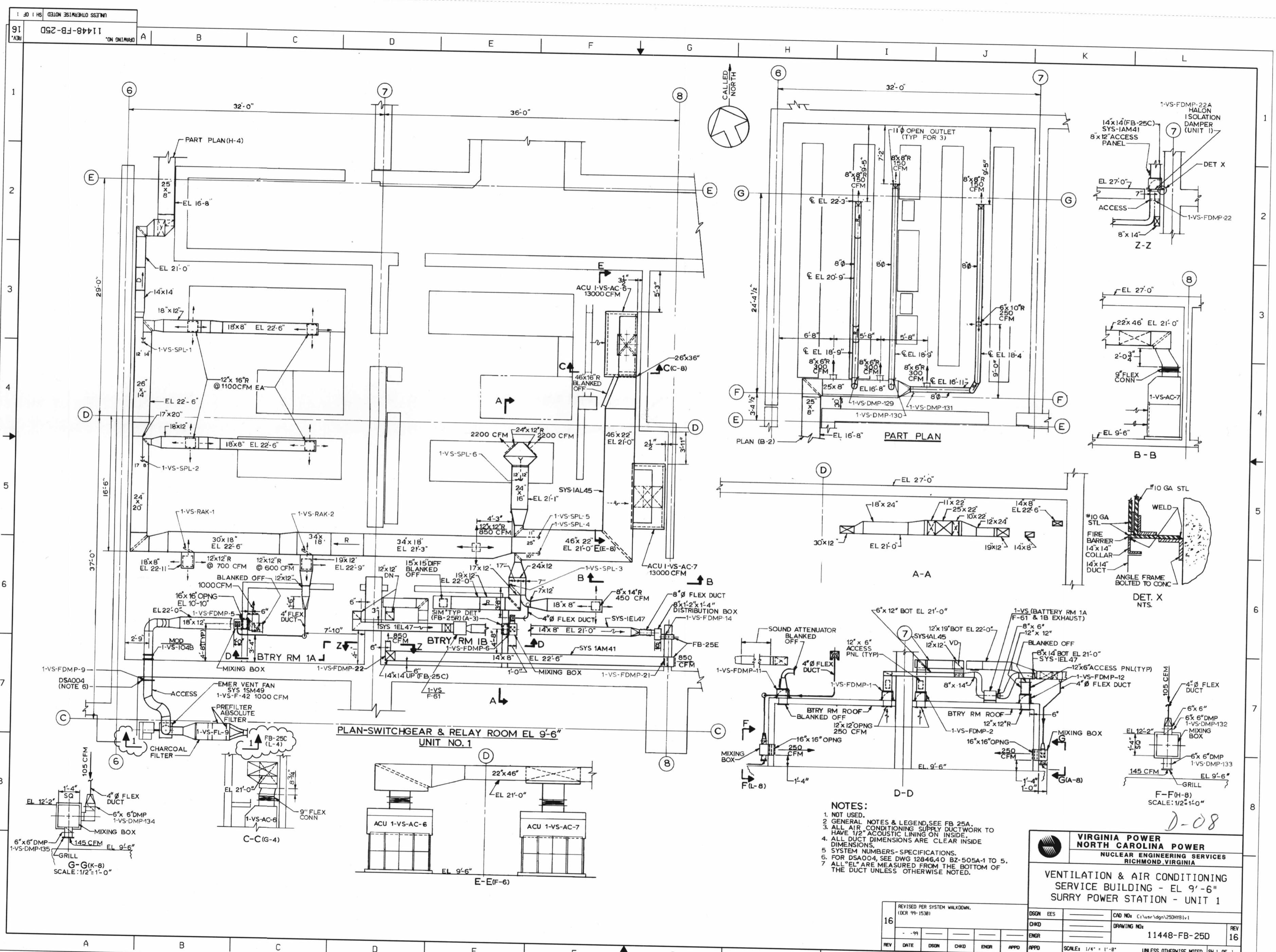


VERIFY print 24 hrs after 8:28:50 AM05/06/2004



- NOTES:**
1. NOT USED.
  2. GENERAL NOTES & LEGEND SEE FB 25A.
  3. ALL AIR CONDITIONING SUPPLY DUCTWORK TO HAVE 1/2" ACOUSTIC LINING ON INSIDE.
  4. ALL DUCT DIMENSIONS ARE CLEAR INSIDE DIMENSIONS.
  5. SYSTEM NUMBERS - SPECIFICATIONS.
  6. FOR DSA004, SEE DWG 12846.40 BZ-505A-1 TO 5.
  7. ALL "EL" ARE MEASURED FROM THE BOTTOM OF THE DUCT UNLESS OTHERWISE NOTED.

**VIRGINIA POWER  
NORTH CAROLINA POWER**  
NUCLEAR ENGINEERING SERVICES  
RICHMOND, VIRGINIA

**VENTILATION & AIR CONDITIONING  
SERVICE BUILDING - EL 9'-6"  
SURRY POWER STATION - UNIT 1**

REVISED PER SYSTEM WALKDOWN (OCR 99-1538)		DSGN EES	CAO NO: C:\user\edgn\250HYB1.v
16	99	CHKD	DRAWING NO: 11448-FB-250
REV	DATE	DSGN	ENGR
			APPD
		SCALE: 1/4" = 1'-0"	UNLESS OTHERWISE NOTED SH 1 OF 1

D-08